

Converting Colors

YUV(133.1550, -7.9644,
81.4251)

Have a look what the booklet for
YUV(133.1550, -7.9644, 81.4251)
contains.

YUV(133.1550, -7.9644, 81.4251)	3
<i>Conversions</i>	4
<i>Details</i>	6
<i>Harmonies</i>	12
<i>Previews</i>	24
<i>Color Blindness Simulation</i>	28
<i>CSS Examples</i>	31

Color

**YUV(133.1550, -7.9644,
81.4251)**

Conversions

Conversions Part 1

Format	Color
Hex	E25975
RGB	226, 89, 117
RGB Percent	89%, 35%, 46%
CMY	0.1137, 0.6510, 0.5412
CMYK	0.00, 0.61, 0.48, 0.11
HSL	348°, 70%, 62%
HSV	348°, 61%, 89%
XYZ	38.1473, 24.5979, 19.5669
YIQ	133.1550, 72.6640, 37.7520

Conversions

Conversions Part 2

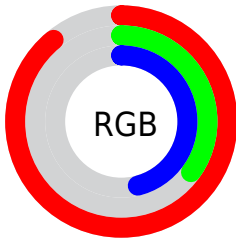
Format	Color
R_{YB}	226, 89, 117
Decimal	14834037
CIE _{Lab}	56.68, 55.54, 12.45
CIE _{LCh}	57, 56.914, 12.636
Yxy	24.5979, 0.4634, 0.2988
Android (android.graphics.Color)	4293024117 (0xFFE25975)
YUV	133.1550, -7.9644, 81.4251
Hunter-Lab	49.5962, 50.5011, 11.3260

Details

The YUV color **133.1550, -7.9644, 81.4251** is a dark color, and the websafe version is hex **CC3366**. The color can be described as middle muted rose. A complement of this color would be **181.8450, 7.9644, -81.4251**, and the grayscale version is **133.0000, 0.0000, 0.0000**.

A 20% lighter version of the original color is **180.0390, -5.4422, 65.7408**, and **74.5230, -2.7228, 80.2253** is the 20% darker color. If you saturate the color by 10%, you get **117.6020, -9.1708, 95.0650**, and if you desaturate by 10%, it is **148.7080, -6.7580, 67.7851**.

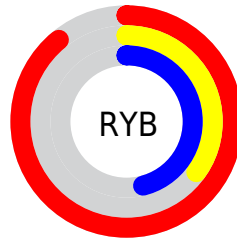
Distribution



Red (89%)

Green (35%)

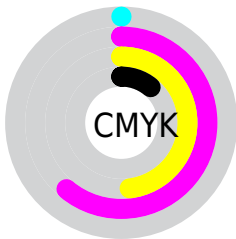
Blue (46%)



Red (89%)

Yellow (35%)

Blue (46%)

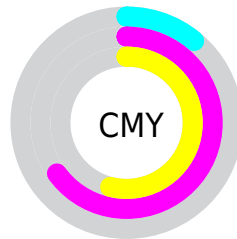


Cyan (0%)

Magenta (61%)

Yellow (48%)

Black (11%)



Cyan (11%)

Magenta (65%)

Yellow (54%)

Brightness & Saturation Gradients

These gradients show how the YUV color 133.1550, -7.9644, 81.4251 changes by changing the brightness by 10 percent. The first figure shows a shift by +10% for each color and the second figure -10%.

Similar to the brightness gradients but the following saturation gradients show a change of the YUV color 133.1550, -7.9644, 81.4251 by changing the saturation by 10% instead.

133.1550, -7.9644,
81.4251

133.1550, -7.9644,
81.4251

255.0000, 0.0000,
0.0000

104.8990, -6.3592,
79.8956

180.0390, -5.4422,
65.7408

74.5230, -2.7228,
80.2253

200.1400, -2.0410,
48.1122

46.0220, 0.4822,
78.9107

219.7680, 2.0864,
30.8985

35.0710, -3.9790,
63.0817

240.0970, 6.3612,
13.0699

23.6210, -11.6452,
48.5674

15.4770, -6.6442,
31.1537

0.0000, 0.0000,

0.0000

■ 133.1550, -7.9644,
81.4251

■ 133.1550, -7.9644,
81.4251

■ 117.6020, -9.1708,
95.0650

■ 148.7080, -6.7580,
67.7851

■ 102.6360,
-10.6665, 108.1902

■ 163.6740, -5.2623,
54.6599

■ 87.0830, -11.8729,
121.8302

■ 179.2270, -4.0559,
41.0199

■ 72.8180, -13.2213,
134.3406

■ 194.1930, -2.5601,
27.8947

■ 209.7460, -1.3538,
14.2548

■ 225.2990, -0.1474,
0.6148

■ 240.2650, 1.3484,
-12.5104

■ 246.3290, 4.2748,
-17.8285

Harmonies

Analogous

The Analogous color harmony consists of three colors that are next to each other on the color wheel.



137.3050, 14.6396, 64.6305



133.1550, -7.9644, 81.4251



132.8400, -30.4871, 72.0543

Triad

The Triadic color harmony groups three colors that are evenly spaced from another and form a triangle on the color wheel.



133.1550, -7.9644, 81.4251



121.5500, -31.3301, -31.1773



113.6830, 57.3443, -99.7000

Complementary

The Complementary color scheme is a pair of colors which are on the opposite of each other on the color wheel.



133.1550, -7.9644, 81.4251



181.8450, 7.9644, -81.4251

Split Complementary

Split-complementary colors differ from the complementary color scheme. The scheme consists of three colors, the original color and two neighbors of the complement color.



115.1870, 42.7988, -101.0190



133.1550, -7.9644, 81.4251



104.7160, 0.1400, -91.8359

Square

The Square scheme is like the rectangle color scheme, but the four colors are evenly spaced on the color wheel.



133.1550, -7.9644, 81.4251



127.6020, -50.0898, 12.6270



111.7040, 21.8379, -97.9644



127.9440, 51.7926, -45.5549

Rectangle

The Rectangle color scheme consists of four colors that form a rectangle on the color wheel.



133.1550, -7.9644, 81.4251



132.1250, -42.9526, 56.8954



111.7040, 21.8379, -97.9644



115.3470, 53.5659, -101.1593

Sweetspot

The Sweet Spot groups the original color and five complimentary colors.



133.1550, -7.9644, 81.4251



223.7800, -2.8495, 27.3799



136.6110, 44.0688, 52.0842



108.3550, -1.6540, 17.2287



0.0000, 0.0000, 0.0000



128.0000, 0.0000, 0.0000

Same Dimension

The Same Dimension uses a secret algorithm to generate beautiful new colors.



133.1550, -7.9644, 81.4251



128.9460, -10.8194, 110.5494



152.8560, -31.4810, 64.1473



104.5170, -0.7479, 6.5626



56.7280, -10.2189, 104.6015



15.4920, -2.7076, 28.5095

Inverse Universe

The Inverse Universe completely reimagines the original color for something new.



133.1550, -7.9644, 81.4251



128.9460, -10.8194, 110.5494



162.1440, 31.4810, -64.1473



104.5170, -0.7479, 6.5626



56.7280, -10.2189, 104.6015



15.4920, -2.7076, 28.5095

Previews

White Background



This preview shows how the YUV color 133.1550, -7.9644, 81.4251 looks on a white background.

Color Contrast Check

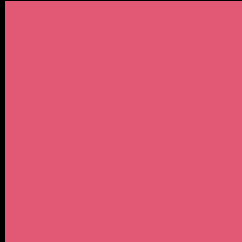
Large Text (above 18pt) WCAG AA ✓ Pass

Any Text WCAG AA × Fail

Large Text (above 18pt) WCAG AAA × Fail

Any Text WCAG AAA × Fail

Black Background



This preview shows how the YUV color 133.1550, -7.9644, 81.4251 looks on a black background.

Color Contrast Check

Large Text (above 18pt) WCAG AA ✓ Pass

Any Text WCAG AA ✓ Pass

Large Text (above 18pt) WCAG AAA ✓ Pass

Any Text WCAG AAA × Fail

If you want to check with other color combinations, try the [Color Contrast Checker](#).

YUV 133.1550, -7.9644, 81.4251

Background



This preview shows how black text looks on a background with the YUV color 133.1550, -7.9644, 81.4251.



This preview shows how white text looks on a background with the YUV color 133.1550, -7.9644,

81.4251.

Color Blindness Simulation

Color vision deficiency is a very complex topic, and I could not describe the different causes any better than Wikipedia does, so if you want to learn more, you should check out their [article about color blindness](#).

Dichromacy



Original Color

133.1550, -7.9644, 81.4251

Protanopia

136.9830, 2.4734, 0.0149

Deuteranopia

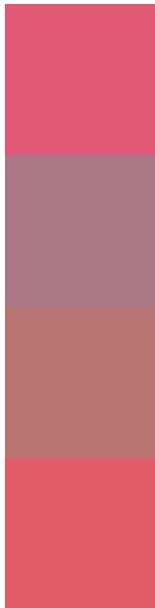
137.0920, -12.8634, 19.2133



Tritanopia

132.4510, -16.9843, 81.1655

Trichromacy



Original Color

133.1550, -7.9644, 81.4251

Protanomaly

135.5460, -1.2552, 29.3392

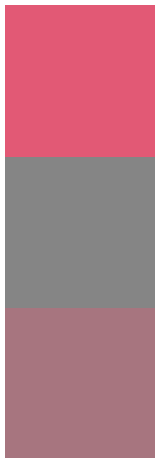
Deuteranomaly

135.6910, -11.1867, 41.4900

Tritanomaly

132.6620, -13.6374, 80.9804

Monochromacy



Original Color

133.1550, -7.9644, 81.4251

Achromatopsia

133.0000, 0.0000, 0.0000

Achromatomaly

133.0900, -3.0024, 29.7391

CSS Examples

Text

The CSS property to change the color of the text to YUV 133.1550, -7.9644, 81.4251 is called "color". The color property can be set on classes, ids or directly on the HTML element.

This example shows how text in the color `rgb(226, 89, 117)` looks like.

```
.text, #text, p{  
    color:rgb(226, 89, 117)  
}
```

If you want to add a text shadow in that color use the text-shadow property, you can generate a text shadow directly with our [CSS Text Shadow Generator](#).

Here you see how black text with a 4 pixel rgb(226, 89, 117) colored shadow looks like.

```
.shadow{ text-shadow: 4px 4px 2px rgb(226, 89, 117) }
```

Border

The CSS property to change the border of an element to YUV 133.1550, -7.9644, 81.4251 is called "border". The border property can be set on classes, ids or directly on the HTML element.

This example shows the color as border, it can be applied via the CSS property "border" or "border-color".

```
.border, #border, table{ border:4px solid rgb(226, 89, 117) }
```


If only the border color should be changed use the property `border-color`.

```
.border{ border-color:rgb(226, 89, 117) }
```

If you want to add a box shadow in that color use:

Here you see how a box with a 4 pixel `rgb(226, 89, 117)` colored shadow looks like.

```
.boxshadow{ -moz-box-shadow:4px 4px 4px 4px rgb(226, 89, 117); -webkit-box-shadow:4px 4px 4px 4px rgb(226, 89, 117); box-shadow:4px 4px 4px 4px rgb(226, 89, 117) }
```

Background

The CSS property to change the background color of an element to YUV 133.1550, -7.9644, 81.4251 is called "background". The background property can be set on classes, ids or directly on the HTML element.

```
.background, #background, body{  
background: rgb(226, 89, 117) }
```

If only the background color should be changed can be used:

```
.background{ background-color: rgb(226, 89,  
117) }
```

This example shows the color as background, it is applied via the CSS property "background".

To optimize and compress your CSS code, you can use our [online CSS compressor and optimizer](#) based on csstidy. If you want to create a linear or radial gradient as background or border, check our [CSS Gradient Generator](#).

Hey! You found this booklet interesting? Support Converting Colors with the new Membership Option!

The pro membership hides all ads, plus gives you double the colors in the color bucket, and more awesome pro features!

[Learn more, Memberships starting at \\$2.50/m!](#)

**Follow me
on Twitter!**

@ConvertingColor