

Converting Colors

YUV(133.8160, -30.9683,
39.6264)

Have a look what the booklet for
YUV(133.8160, -30.9683, 39.6264)
contains.

YUV(133.8160, -30.9683, 39.6264)	3
<i>Conversions</i>	4
<i>Details</i>	6
<i>Harmonies</i>	12
<i>Previews</i>	24
<i>Color Blindness Simulation</i>	28
<i>CSS Examples</i>	31

Color

**YUV(133.8160, -30.9683,
39.6264)**

Conversions

Conversions Part 1

Format	Color
Hex	B37B47
RGB	179, 123, 71
RGB Percent	70%, 48%, 28%
CMY	0.2980, 0.5176, 0.7216
CMYK	0.00, 0.31, 0.60, 0.30
HSL	29°, 43%, 49%
HSV	29°, 60%, 70%
XYZ	26.8107, 24.2046, 9.2201
YIQ	133.8160, 50.0680, -4.3000

Conversions

Conversions Part 2

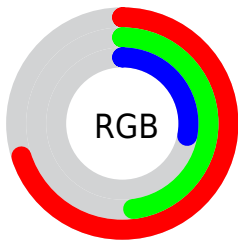
Format	Color
R_YB	179, 171, 71
Decimal	11762503
CIE Lab	56.29, 16.31, 36.82
CIE LCh	56, 40.267, 66.105
Yxy	24.2046, 0.4451, 0.4018
Android (android.graphics.Color)	4289952583 (0xFFB37B47)
YUV	133.8160, -30.9683, 39.6264
Hunter-Lab	49.1981, 11.1775, 23.3273

Details

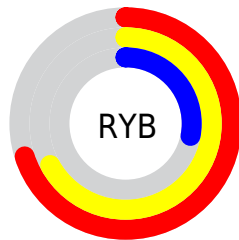
The YUV color **133.8160, -30.9683, 39.6264** is a dark color, and the websafe version is hex **996633**. A complement of this color would be **116.1840, 30.9683, -39.6264**, and the grayscale version is **134.0000, 0.0000, 0.0000**.

A 20% lighter version of the original color is **188.2680, -33.1631, 43.6150**, and **82.9510, -29.0628, 35.1230** is the 20% darker color. If you saturate the color by 10%, you get **126.4810, -36.2261, 46.0592**, and if you desaturate by 10%, it is **141.1510, -25.7104, 33.1936**.

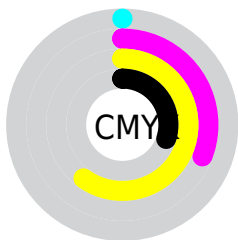
Distribution



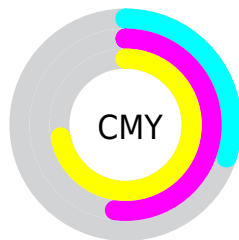
- Red (70%)
- Green (48%)
- Blue (28%)



- Red (70%)
- Yellow (67%)
- Blue (28%)



- Cyan (0%)
- Magenta (31%)
- Yellow (60%)
- Black (30%)



- Cyan (30%)
- Magenta (52%)
- Yellow (72%)

Brightness & Saturation Gradients

These gradients show how the YUV color 133.8160, -30.9683, 39.6264 changes by changing the brightness by 10 percent. The first figure shows a shift by +10% for each color and the second figure -10%.

Similar to the brightness gradients but the following saturation gradients show a change of the YUV color 133.8160, -30.9683, 39.6264 by changing the saturation by 10% instead.

■ 133.8160,
-30.9683, 39.6264

■ 133.8160,
-30.9683, 39.6264

255.0000, 0.0000,
0.0000

■ 108.0330,
-30.0893, 37.6821

■ 188.2680,
-33.1631, 43.6150

■ 82.9510, -29.0628,
35.1230

■ 212.1640,
-32.1259, 37.5672

■ 58.3420, -28.7626,
32.1491

■ 231.6780,
-28.4353, 20.4534

■ 38.2410, -18.8528,
26.9756

■ 248.8440,
-23.5871, 5.3988

■ 18.1400, -8.9430,
21.8022

■ 252.1500,
-10.9200, 2.4994

■ 0.2990, -0.1474,
0.6148

■ 0.0000, 0.0000,

0.0000

■ 133.8160,
-30.9683, 39.6264

■ 133.8160,
-30.9683, 39.6264

■ 126.4810,
-36.2261, 46.0592

■ 141.1510,
-25.7104, 33.1936

■ 118.5590,
-41.1946, 53.0068

■ 149.0730,
-20.7420, 26.2460

■ 111.2240,
-46.4524, 59.4396

■ 156.4080,
-15.4841, 19.8132

■ 104.0030,
-51.2735, 65.7724

■ 163.7430,
-10.2263, 13.3804

■ 171.0780, -4.9685,
6.9476

■ 178.8860, -0.4368,
0.1000

■ 186.2210, 4.8210,
-6.3328

■ 193.5560, 10.0789,
-12.7656

■ 201.4780, 15.0473,
-19.7132

Harmonies

Analogous

The Analogous color harmony consists of three colors that are next to each other on the color wheel.



135.3030, -19.3764, 54.9853



133.8160, -30.9683, 39.6264



130.9780, -33.5132, 15.8053

Triad

The Triadic color harmony groups three colors that are evenly spaced from another and form a triangle on the color wheel.



133.8160, -30.9683, 39.6264



105.8850, 17.3117, -92.8611



138.0420, 26.6013, 7.8562

Complementary

The Complementary color scheme is a pair of colors which are on the opposite of each other on the color wheel.



133.8160, -30.9683, 39.6264



116.1840, 30.9683, -39.6264

Split Complementary

Split-complementary colors differ from the complementary color scheme. The scheme consists of three colors, the original color and two neighbors of the complement color.



129.9980, 36.4830, -35.0782



133.8160, -30.9683, 39.6264



109.1740, 32.4522, -95.7456

Square

The Square scheme is like the rectangle color scheme, but the four colors are evenly spaced on the color wheel.



133.8160, -30.9683, 39.6264



120.0420, -7.4157, -48.2718



108.2740, 44.2349, -94.9563



138.8690, 12.3896, 39.5799

Rectangle

The Rectangle color scheme consists of four colors that form a rectangle on the color wheel.



133.8160, -30.9683, 39.6264



128.7090, -28.9435, -3.2528



108.2740, 44.2349, -94.9563



136.8770, 30.1336, -5.1541

Sweetspot

The Sweet Spot groups the original color and five complimentary colors.



133.8160, -30.9683, 39.6264



214.2980, -11.9789, 15.5247



109.9040, 9.4143, 60.5972



106.4050, -7.5947, 9.2918



245.0000, 0.0000, 0.0000



117.0000, 0.0000, 0.0000

Same Dimension

The Same Dimension uses a secret algorithm to generate beautiful new colors.



133.8160, -30.9683, 39.6264



161.8930, -47.7682, 61.4838



164.3400, -46.0166, 12.8568



85.6260, -2.7736, 2.9590



89.1850, -43.9682, 55.9658



14.8180, -7.3053, 9.8066

Inverse Universe

The Inverse Universe completely reimagines the original color for something new.



116.1840, 30.9683, -39.6264



135.1070, 47.7682, -61.4838



85.6600, 46.0166, -12.8568



83.9610, 2.4842, -3.4738



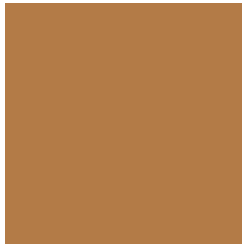
63.8150, 43.9682, -55.9658



10.5950, 7.5947, -9.2918

Previews

White Background



This preview shows how the YUV color 133.8160, -30.9683, 39.6264 looks on a white background.

Color Contrast Check

Large Text (above 18pt) WCAG AA ✓ Pass

Any Text WCAG AA × Fail

Large Text (above 18pt) WCAG AAA × Fail

Any Text WCAG AAA × Fail

Black Background



This preview shows how the YUV color 133.8160, -30.9683, 39.6264 looks on a black background.

Color Contrast Check

Large Text (above 18pt) WCAG AA ✓ Pass

Any Text WCAG AA ✓ Pass

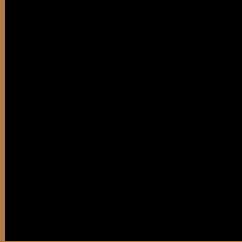
Large Text (above 18pt) WCAG AAA ✓ Pass

Any Text WCAG AAA × Fail

If you want to check with other color combinations, try the [Color Contrast Checker](#).

YUV 133.8160, -30.9683, 39.6264

Background



This preview shows how black text looks on a background with the YUV color 133.8160, -30.9683, 39.6264.



This preview shows how white text looks on a background with the YUV color 133.8160, -30.9683,

Color Blindness Simulation

Color vision deficiency is a very complex topic, and I could not describe the different causes any better than Wikipedia does, so if you want to learn more, you should check out their [article about color blindness](#).

Dichromacy



Original Color

133.8160, -30.9683, 39.6264

Protanopia

132.3460, -28.2716, 14.6056

Deuteranopia

133.3370, -31.2251, 28.6455



Tritanopia

137.6460, -6.2345, 39.7755

Trichromacy



Original Color

133.8160, -30.9683, 39.6264

Protanomaly

133.1730, -29.1723, 23.5273

Deuteranomaly

133.6580, -31.3834, 32.7489

Tritanomaly

136.2410, -15.4018, 40.1306

Monochromacy



Original Color

133.8160, -30.9683, 39.6264

Achromatopsia

134.0000, 0.0000, 0.0000

Achromatomaly

133.8140, -11.2473, 14.1951

CSS Examples

Text

The CSS property to change the color of the text to YUV 133.8160, -30.9683, 39.6264 is called "color". The color property can be set on classes, ids or directly on the HTML element.

This example shows how text in the color `rgb(179, 123, 71)` looks like.

```
.text, #text, p{  
    color:rgb(179, 123, 71)  
}
```

If you want to add a text shadow in that color use the text-shadow property, you can generate a text shadow directly with our [CSS Text Shadow Generator](#).

Here you see how black text with a 4 pixel rgb(179, 123, 71) colored shadow looks like.

```
.shadow{ text-shadow: 4px 4px 2px rgb(179, 123, 71) }
```

Border

The CSS property to change the border of an element to YUV 133.8160, -30.9683, 39.6264 is called "border".

The border property can be set on classes, ids or directly on the HTML element.

This example shows the color as border, it can be applied via the CSS property "border" or "border-color".

```
.border, #border, table{ border:4px solid rgb(179, 123, 71) }
```


If only the border color should be changed use the property `border-color`.

```
.border{ border-color:rgb(179, 123, 71) }
```

If you want to add a box shadow in that color use:

Here you see how a box with a 4 pixel `rgb(179, 123, 71)` colored shadow looks like.

```
.boxshadow{ -moz-box-shadow:4px 4px 4px  
4px rgb(179, 123, 71); -webkit-box-  
shadow:4px 4px 4px 4px rgb(179, 123, 71);  
box-shadow:4px 4px 4px 4px rgb(179, 123,  
71) }
```

Background

The CSS property to change the background color of an element to YUV 133.8160, -30.9683, 39.6264 is called "background". The background property can be set on classes, ids or directly on the HTML element.

```
.background, #background, body{  
background: rgb(179, 123, 71) }
```

If only the background color should be changed can be used:

```
.background{ background-color: rgb(179,  
123, 71) }
```

This example shows the color as background, it is applied via the CSS property "background".

To optimize and compress your CSS code, you can use our [online CSS compressor and optimizer](#) based on csstidy. If you want to create a linear or radial gradient as background or border, check our [CSS Gradient Generator](#).

Hey! You found this booklet interesting? Support Converting Colors with the new Membership Option!

The pro membership hides all ads, plus gives you double the colors in the color bucket, and more awesome pro features!

[Learn more, Memberships starting at \\$2.50/m!](#)

**Follow me
on Twitter!**

@ConvertingColor