

Converting Colors

YUV(133.9080, -30.5206,
36.0377)

Have a look what the booklet for
YUV(133.9080, -30.5206, 36.0377)
contains.

YUV(133.9080, -30.5206, 36.0377)	3
<i>Conversions</i>	4
<i>Details</i>	6
<i>Harmonies</i>	12
<i>Previews</i>	24
<i>Color Blindness Simulation</i>	28
<i>CSS Examples</i>	31

Color

**YUV(133.9080, -30.5206,
36.0377)**

Conversions

Conversions Part 1

Format	Color
Hex	AF7D48
RGB	175, 125, 72
RGB Percent	69%, 49%, 28%
CMY	0.3137, 0.5098, 0.7176
CMYK	0.00, 0.29, 0.59, 0.31
HSL	31°, 42%, 48%
HSV	31°, 59%, 69%
XYZ	26.1825, 24.2491, 9.4315
YIQ	133.9080, 46.8130, -5.8830

Conversions

Conversions Part 2

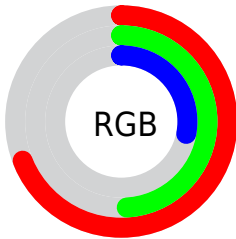
Format	Color
R_{YB}	169, 175, 72
Decimal	11500872
CIE Lab	56.34, 13.54, 36.23
CIE LCh	56, 38.673, 69.509
Yxy	24.2491, 0.4374, 0.4051
Android (android.graphics.Color)	4289690952 (0xFFAF7D48)
YUV	133.9080, -30.5206, 36.0377
Hunter-Lab	49.2433, 8.7320, 23.1147

Details

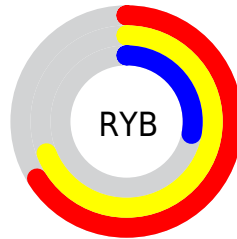
The YUV color **133.9080, -30.5206, 36.0377** is a dark color, and the websafe version is hex **996633**. A complement of this color would be **113.0920, 30.5206, -36.0377**, and the grayscale version is **134.0000, 0.0000, 0.0000**.

A 20% lighter version of the original color is **188.0610, -32.5681, 39.4115**, and **83.0430, -28.6152, 31.5343** is the 20% darker color. If you saturate the color by 10%, you get **127.1600, -36.0679, 41.9557**, and if you desaturate by 10%, it is **140.5420, -25.4102, 30.2197**.

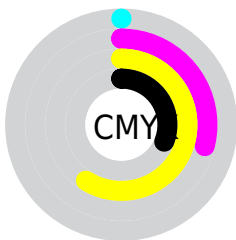
Distribution



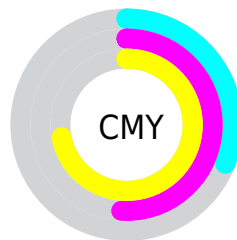
- Red (69%)
- Green (49%)
- Blue (28%)



- Red (66%)
- Yellow (69%)
- Blue (28%)



- Cyan (0%)
- Magenta (29%)
- Yellow (59%)
- Black (31%)



- Cyan (31%)
- Magenta (51%)
- Yellow (72%)

Brightness & Saturation Gradients

These gradients show how the YUV color 133.9080, -30.5206, 36.0377 changes by changing the brightness by 10 percent. The first figure shows a shift by +10% for each color and the second figure -10%.

Similar to the brightness gradients but the following saturation gradients show a change of the YUV color 133.9080, -30.5206, 36.0377 by changing the saturation by 10% instead.

■ 133.9080,
-30.5206, 36.0377

■ 133.9080,
-30.5206, 36.0377

■ 255.0000, 0.0000,
0.0000

■ 108.1250,
-29.6416, 34.0934

■ 188.0610,
-32.5681, 39.4115

■ 83.0430, -28.6152,
31.5343

■ 213.4520,
-32.2678, 36.4376

■ 58.6190, -28.8992,
29.2751

■ 232.9660,
-28.5772, 19.3238

■ 38.5180, -18.9894,
24.1017

■ 249.0720,
-22.7135, 5.1989

■ 18.7160, -9.2270,
19.5431

■ 252.2640,
-10.4832, 2.3995

■ 0.0000, 0.0000,
0.0000

■ 133.9080,
-30.5206, 36.0377

■ 133.9080,
-30.5206, 36.0377

■ 127.1600,
-36.0679, 41.9557

■ 140.5420,
-25.4102, 30.2197

■ 119.9390,
-40.8889, 48.2885

■ 147.8770,
-20.1524, 23.7869

■ 113.3050,
-45.9994, 54.1065

■ 154.6250,
-14.6051, 17.8689

■ 105.9700,
-51.2572, 60.5393

■ 161.8460, -9.7841,
11.5361

■ 105.1550,
-51.8414, 61.2541

■ 168.5940, -4.2368,
5.6181

■ 175.8150, 0.5842,
-0.7148

■ 182.5630, 6.1314,
-6.6328

■ 189.7840, 10.9525,

-12.9656

■ 196.5320, 16.4997,
-18.8836

Harmonies

Analogous

The Analogous color harmony consists of three colors that are next to each other on the color wheel.



135.6400, -20.5285, 51.1817



133.9080, -30.5206, 36.0377



131.4120, -31.7551, 11.9167

Triad

The Triadic color harmony groups three colors that are evenly spaced from another and form a triangle on the color wheel.



133.9080, -30.5206, 36.0377



106.3410, 19.0589, -93.2611



138.3800, 23.9697, 11.9447

Complementary

The Complementary color scheme is a pair of colors which are on the opposite of each other on the color wheel.



133.9080, -30.5206, 36.0377



113.0920, 30.5206, -36.0377

Split Complementary

Split-complementary colors differ from the complementary color scheme. The scheme consists of three colors, the original color and two neighbors of the complement color.



132.0590, 33.9879, -28.1157



133.9080, -30.5206, 36.0377



108.8150, 33.6152, -95.4308

Square

The Square scheme is like the rectangle color scheme, but the four colors are evenly spaced on the color wheel.



133.9080, -30.5206, 36.0377



120.0140, -4.9369, -50.0013



107.5730, 44.0875, -94.3415



138.5980, 10.0582, 40.6946

Rectangle

The Rectangle color scheme consists of four colors that form a rectangle on the color wheel.



133.9080, -30.5206, 36.0377



128.9690, -26.6067, -6.1118



107.5730, 44.0875, -94.3415



137.6280, 27.7914, -0.5508

Sweetspot

The Sweet Spot groups the original color and five complimentary colors.



133.9080, -30.5206, 36.0377



210.5860, -12.1209, 14.3951



108.7250, 7.5306, 58.1232



104.5190, -7.1579, 9.1918



242.0000, 0.0000, 0.0000



115.0000, 0.0000, 0.0000

Same Dimension

The Same Dimension uses a secret algorithm to generate beautiful new colors.



133.9080, -30.5206, 36.0377



162.8600, -47.7520, 56.2508



163.2580, -44.9902, 10.2977



83.0390, -2.4842, 3.4738



90.0490, -44.3942, 52.5770



13.9210, -6.8631, 7.9623

Inverse Universe

The Inverse Universe completely reimagines the original color for something new.



113.0920, 30.5206, -36.0377



130.1400, 47.7520, -56.2508



83.7420, 44.9902, -10.2977



81.3740, 2.7736, -2.9590



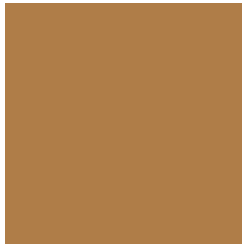
59.9510, 44.3942, -52.5770



9.0790, 6.8631, -7.9623

Previews

White Background



This preview shows how the YUV color 133.9080, -30.5206, 36.0377 looks on a white background.

Color Contrast Check

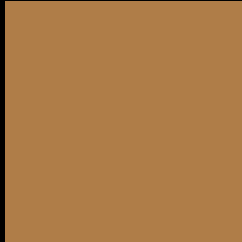
Large Text (above 18pt) WCAG AA ✓ Pass

Any Text WCAG AA × Fail

Large Text (above 18pt) WCAG AAA × Fail

Any Text WCAG AAA × Fail

Black Background



This preview shows how the YUV color 133.9080, -30.5206, 36.0377 looks on a black background.

Color Contrast Check

Large Text (above 18pt) WCAG AA ✓ Pass

Any Text WCAG AA ✓ Pass

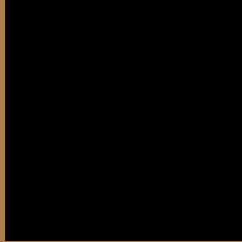
Large Text (above 18pt) WCAG AAA ✓ Pass

Any Text WCAG AAA × Fail

If you want to check with other color combinations, try the [Color Contrast Checker](#).

YUV 133.9080, -30.5206, 36.0377

Background



This preview shows how black text looks on a background with the YUV color 133.9080, -30.5206, 36.0377.



This preview shows how white text looks on a background with the YUV color 133.9080, -30.5206, 36.0377.

Color Blindness Simulation

Color vision deficiency is a very complex topic, and I could not describe the different causes any better than Wikipedia does, so if you want to learn more, you should check out their [article about color blindness](#).

Dichromacy



Original Color

133.9080, -30.5206, 36.0377

Protanopia

132.4600, -27.8348, 14.5056

Deuteranopia

133.4510, -30.7883, 28.5455



Tritanopia

137.2650, -5.0606, 36.6016

Trichromacy



Original Color

133.9080, -30.5206, 36.0377

Protanomaly

132.6890, -28.4407, 22.1977

Deuteranomaly

133.7610, -30.9412, 30.9046

Tritanomaly

136.4470, -14.5174, 36.4420

Monochromacy



Original Color

133.9080, -30.5206, 36.0377

Achromatopsia

134.0000, 0.0000, 0.0000

Achromatomaly

134.1020, -11.3893, 13.0655

CSS Examples

Text

The CSS property to change the color of the text to YUV 133.9080, -30.5206, 36.0377 is called "color". The color property can be set on classes, ids or directly on the HTML element.

This example shows how text in the color `rgb(175, 125, 72)` looks like.

```
.text, #text, p{  
    color:rgb(175, 125, 72)  
}
```

If you want to add a text shadow in that color use the text-shadow property, you can generate a text shadow directly with our [CSS Text Shadow Generator](#).

Here you see how black text with a 4 pixel rgb(175, 125, 72) colored shadow looks like.

```
.shadow{ text-shadow: 4px 4px 2px rgb(175, 125, 72) }
```

Border

The CSS property to change the border of an element to YUV 133.9080, -30.5206, 36.0377 is called "border".

The border property can be set on classes, ids or directly on the HTML element.

This example shows the color as border, it can be applied via the CSS property "border" or "border-color".

```
.border, #border, table{ border:4px solid rgb(175, 125, 72) }
```


If only the border color should be changed use the property `border-color`.

```
.border{ border-color:rgb(175, 125, 72) }
```

If you want to add a box shadow in that color use:

Here you see how a box with a 4 pixel `rgb(175, 125, 72)` colored shadow looks like.

```
.boxshadow{ -moz-box-shadow:4px 4px 4px 4px rgb(175, 125, 72); -webkit-box-shadow:4px 4px 4px 4px rgb(175, 125, 72); box-shadow:4px 4px 4px 4px rgb(175, 125, 72) }
```

Background

The CSS property to change the background color of an element to YUV 133.9080, -30.5206, 36.0377 is called "background". The background property can be set on classes, ids or directly on the HTML element.

```
.background, #background, body{  
background: rgb(175, 125, 72) }
```

If only the background color should be changed can be used:

```
.background{ background-color: rgb(175,  
125, 72) }
```

This example shows the color as background, it is applied via the CSS property "background".

To optimize and compress your CSS code, you can use our [online CSS compressor and optimizer](#) based on csstidy. If you want to create a linear or radial gradient as background or border, check our [CSS Gradient Generator](#).

Hey! You found this booklet interesting? Support Converting Colors with the new Membership Option!

The pro membership hides all ads, plus gives you double the colors in the color bucket, and more awesome pro features!

[Learn more, Memberships starting at \\$2.50/m!](#)

**Follow me
on Twitter!**

@ConvertingColor