

Converting Colors

YUV(134.0330, -9.8763,
41.1901)

Have a look what the booklet for
YUV(134.0330, -9.8763, 41.1901)
contains.

YUV(134.0330, -9.8763, 41.1901)	3
<i>Conversions</i>	4
<i>Details</i>	6
<i>Harmonies</i>	12
<i>Previews</i>	24
<i>Color Blindness Simulation</i>	28
<i>CSS Examples</i>	31

Color

**YUV(134.0330, -9.8763,
41.1901)**

Conversions

Conversions Part 1

Format	Color
Hex	B57272
RGB	181, 114, 114
RGB Percent	71%, 45%, 45%
CMY	0.2902, 0.5529, 0.5529
CMYK	0.00, 0.37, 0.37, 0.29
HSL	0°, 31%, 58%
HSV	0°, 37%, 71%
XYZ	28.1106, 23.0733, 18.8916
YIQ	134.0330, 39.9320, 14.2040

Conversions

Conversions Part 2

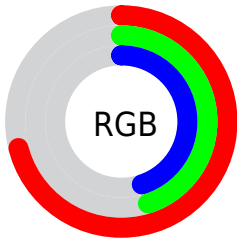
Format	Color
R_{YB}	181, 114, 114
Decimal	11891314
CIE _{Lab}	55.15, 26.46, 11.12
CIE _{LCh}	55, 28.700, 22.795
Yxy	23.0733, 0.4011, 0.3293
Android (android.graphics.Color)	4290081394 (0xFFB57272)
YUV	134.0330, -9.8763, 41.1901
Hunter-Lab	48.0347, 20.4003, 10.3061

Details

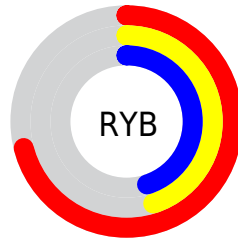
The YUV color **134.0330, -9.8763, 41.1901** is a dark color, and the websafe version is hex **996666**. A complement of this color would be **160.9670, 9.8763, -41.1901**, and the grayscale version is **134.0000, 0.0000, 0.0000**.

A 20% lighter version of the original color is **188.4140, -11.0501, 44.3639**, and **83.3530, -8.5550, 37.4014** is the 20% darker color. If you saturate the color by 10%, you get **121.4150, -12.5296, 52.2560**, and if you desaturate by 10%, it is **146.6510, -7.2229, 30.1241**.

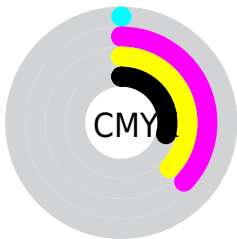
Distribution



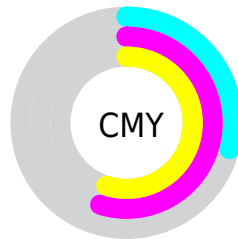
- Red (71%)
- Green (45%)
- Blue (45%)



- Red (71%)
- Yellow (45%)
- Blue (45%)



- Cyan (0%)
- Magenta (37%)
- Yellow (37%)
- Black (29%)



- Cyan (29%)
- Magenta (55%)
- Yellow (55%)

Brightness & Saturation Gradients

These gradients show how the YUV color 134.0330, -9.8763, 41.1901 changes by changing the brightness by 10 percent. The first figure shows a shift by +10% for each color and the second figure -10%.

Similar to the brightness gradients but the following saturation gradients show a change of the YUV color 134.0330, -9.8763, 41.1901 by changing the saturation by 10% instead.

■ 134.0330, -9.8763,
41.1901

■ 134.0330, -9.8763,
41.1901

■ 255.0000, 0.0000,
0.0000

■ 108.2500, -8.9972,
39.2458

■ 188.4140,
-11.0501, 44.3639

■ 83.3530, -8.5550,
37.4014

■ 212.1250, -9.4286,
37.6014

■ 58.6840, -7.2392,
35.3571

■ 231.7530, -5.3012,
20.3876

■ 35.1290, -5.4866,
33.2129

■ 251.9680, -1.4632,
2.6591

■ 14.9500, -7.3703,
30.7388

■ 4.1860, -2.0637,
8.6069

■ 0.0000, 0.0000,

0.0000

■ 134.0330, -9.8763,
41.1901

■ 134.0330, -9.8763,
41.1901

■ 121.4150,
-12.5296, 52.2560

■ 146.6510, -7.2229,
30.1241

■ 108.7970,
-15.1829, 63.3220

■ 159.2690, -4.5696,
19.0581

■ 96.1790, -17.8362,
74.3880

■ 171.8870, -1.9163,
7.9921

■ 83.5610, -20.4896,
85.4540

■ 184.5050, 0.7370,
-3.0739

■ 70.2420, -23.2903,
97.1348

■ 197.8240, 3.5378,
-14.7546

■ 57.6240, -25.9436,
108.2008

■ 210.4420, 6.1911,
-25.8206

■ 54.1190, -26.6807,
111.2746

■ 223.0600, 8.8444,
-36.8866

■ 232.8740, 10.9081,
-45.4935

Harmonies

Analogous

The Analogous color harmony consists of three colors that are next to each other on the color wheel.



135.3880, 1.7807, 35.6167



134.0330, -9.8763, 41.1901



132.7690, -19.6061, 35.2826

Triad

The Triadic color harmony groups three colors that are evenly spaced from another and form a triangle on the color wheel.



134.0330, -9.8763, 41.1901



125.0670, -11.8650, -21.1068



126.7780, 26.7314, -34.0083

Complementary

The Complementary color scheme is a pair of colors which are on the opposite of each other on the color wheel.



134.0330, -9.8763, 41.1901



160.9670, 9.8763, -41.1901

Split Complementary

Split-complementary colors differ from the complementary color scheme. The scheme consists of three colors, the original color and two neighbors of the complement color.



118.0970, 26.0812, -58.8441



134.0330, -9.8763, 41.1901



120.2950, 2.3196, -44.1087

Square

The Square scheme is like the rectangle color scheme, but the four colors are evenly spaced on the color wheel.



134.0330, -9.8763, 41.1901



128.2070, -20.8081, 0.6955



115.3710, 17.0721, -62.5924



133.4010, 21.9873, -5.6137

Rectangle

The Rectangle color scheme consists of four colors that form a rectangle on the color wheel.



134.0330, -9.8763, 41.1901



131.7910, -23.0680, 25.6163



115.3710, 17.0721, -62.5924



124.1250, 27.0534, -43.9596

Sweetspot

The Sweet Spot groups the original color and five complimentary colors.



134.0330, -9.8763, 41.1901



216.7740, -3.8326, 15.9842



141.6710, 19.3892, 34.4915



106.4850, -2.2111, 9.2217



245.0000, 0.0000, 0.0000



117.0000, 0.0000, 0.0000

Same Dimension

The Same Dimension uses a secret algorithm to generate beautiful new colors.



134.0330, -9.8763, 41.1901



162.0960, -15.3303, 63.9368



153.9910, -19.7156, 23.6869



82.6910, -1.3267, 5.5330



45.7470, -22.5533, 94.0609



7.7740, -3.8326, 15.9842

Inverse Universe

The Inverse Universe completely reimagines the original color for something new.



160.9670, 9.8763, -41.1901



203.9040, 15.3303, -63.9368



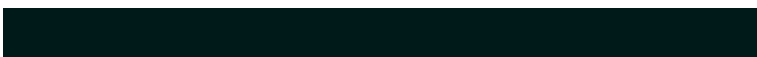
141.5960, 19.4262, -24.2017



86.3090, 1.3267, -5.5330



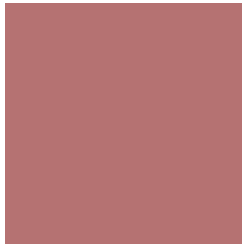
107.2530, 22.5533, -94.0609



18.2260, 3.8326, -15.9842

Previews

White Background



This preview shows how the YUV color 134.0330, -9.8763, 41.1901 looks on a white background.

Color Contrast Check

Large Text (above 18pt) WCAG AA ✓ Pass

Any Text WCAG AA × Fail

Large Text (above 18pt) WCAG AAA × Fail

Any Text WCAG AAA × Fail

Black Background



This preview shows how the YUV color 134.0330, -9.8763, 41.1901 looks on a black background.

Color Contrast Check

Large Text (above 18pt) WCAG AA ✓ Pass

Any Text WCAG AA ✓ Pass

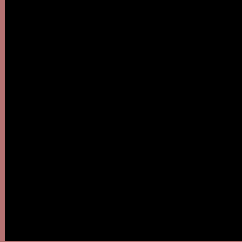
Large Text (above 18pt) WCAG AAA ✓ Pass

Any Text WCAG AAA × Fail

If you want to check with other color combinations, try the [Color Contrast Checker](#).

YUV 134.0330, -9.8763, 41.1901

Background



This preview shows how black text looks on a background with the YUV color 134.0330, -9.8763, 41.1901.



This preview shows how white text looks on a background with the YUV color 134.0330, -9.8763,

Color Blindness Simulation

Color vision deficiency is a very complex topic, and I could not describe the different causes any better than Wikipedia does, so if you want to learn more, you should check out their [article about color blindness](#).

Dichromacy



Original Color

134.0330, -9.8763, 41.1901

Protanopia

132.4690, -4.6682, 3.9737

Deuteranopia

133.0640, -10.3846, 17.4839



Tritanopia

134.5430, -6.6767, 41.6198

Trichromacy



Original Color

134.0330, -9.8763, 41.1901

Protanomaly

132.8020, -6.3114, 17.7136

Deuteranomaly

133.2330, -9.9749, 26.1057

Tritanomaly

134.2010, -7.9871, 41.9197

Monochromacy



Original Color

134.0330, -9.8763, 41.1901

Achromatopsia

134.0000, 0.0000, 0.0000

Achromatomaly

134.1760, -3.5378, 14.7546

CSS Examples

Text

The CSS property to change the color of the text to YUV 134.0330, -9.8763, 41.1901 is called "color". The color property can be set on classes, ids or directly on the HTML element.

This example shows how text in the color `rgb(181, 114, 114)` looks like.

```
.text, #text, p{  
    color:rgb(181, 114, 114)  
}
```

If you want to add a text shadow in that color use the text-shadow property, you can generate a text shadow directly with our [CSS Text Shadow Generator](#).

Here you see how black text with a 4 pixel rgb(181, 114, 114) colored shadow looks like.

```
.shadow{ text-shadow: 4px 4px 2px rgb(181, 114, 114) }
```

Border

The CSS property to change the border of an element to YUV 134.0330, -9.8763, 41.1901 is called "border". The border property can be set on classes, ids or directly on the HTML element.

This example shows the color as border, it can be applied via the CSS property "border" or "border-color".

```
.border, #border, table{ border:4px solid rgb(181, 114, 114) }
```


If only the border color should be changed use the property `border-color`.

```
.border{ border-color:rgb(181, 114, 114) }
```

If you want to add a box shadow in that color use:

Here you see how a box with a 4 pixel `rgb(181, 114, 114)` colored shadow looks like.

```
.boxshadow{ -moz-box-shadow:4px 4px 4px  
4px rgb(181, 114, 114); -webkit-box-  
shadow:4px 4px 4px 4px rgb(181, 114, 114);  
box-shadow:4px 4px 4px 4px rgb(181, 114,  
114) }
```

Background

The CSS property to change the background color of an element to YUV 134.0330, -9.8763, 41.1901 is called "background". The background property can be set on classes, ids or directly on the HTML element.

```
.background, #background, body{  
background: rgb(181, 114, 114) }
```

If only the background color should be changed can be used:

```
.background{ background-color: rgb(181,  
114, 114) }
```

This example shows the color as background, it is applied via the CSS property "background".

To optimize and compress your CSS code, you can use our [online CSS compressor and optimizer](#) based on csstidy. If you want to create a linear or radial gradient as background or border, check our [CSS Gradient Generator](#).

Hey! You found this booklet interesting? Support Converting Colors with the new Membership Option!

The pro membership hides all ads, plus gives you double the colors in the color bucket, and more awesome pro features!

[Learn more, Memberships starting at \\$2.50/m!](#)

**Follow me
on Twitter!**

@ConvertingColor