

Converting Colors

YUV(134.2990, -30.2204,
33.0638)

Have a look what the booklet for
YUV(134.2990, -30.2204, 33.0638)
contains.

YUV(134.2990, -30.2204, 33.0638)	3
<i>Conversions</i>	4
<i>Details</i>	6
<i>Harmonies</i>	12
<i>Previews</i>	24
<i>Color Blindness Simulation</i>	28
<i>CSS Examples</i>	31

Color

**YUV(134.2990, -30.2204,
33.0638)**

Conversions

Conversions Part 1

Format	Color
Hex	AC7F49
RGB	172, 127, 73
RGB Percent	67%, 50%, 29%
CMY	0.3255, 0.5020, 0.7137
CMYK	0.00, 0.26, 0.58, 0.33
HSL	33°, 40%, 48%
HSV	33°, 58%, 67%
XYZ	25.8052, 24.4304, 9.6588
YIQ	134.2990, 44.1540, -7.2540

Conversions

Conversions Part 2

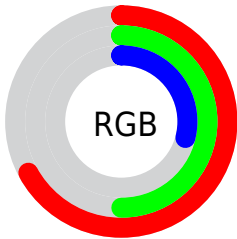
Format	Color
R_{YB}	156, 172, 73
Decimal	11304777
CIE _{Lab}	56.52, 11.19, 35.83
CIE _{LCh}	57, 37.538, 72.653
Yxy	24.4304, 0.4308, 0.4079
Android (android.graphics.Color)	4289494857 (0xFFAC7F49)
YUV	134.2990, -30.2204, 33.0638
Hunter-Lab	49.4272, 6.6948, 23.0129

Details

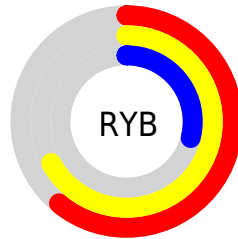
The YUV color **134.2990, -30.2204, 33.0638** is a dark color, and the websafe version is hex **996633**. A complement of this color would be **110.7010, 30.2204, -33.0638**, and the grayscale version is **135.0000, 0.0000, 0.0000**.

A 20% lighter version of the original color is **188.4520, -32.2678, 36.4376**, and **83.7330, -28.4624, 29.1752** is the 20% darker color. If you saturate the color by 10%, you get **127.6650, -35.3308, 38.8818**, and if you desaturate by 10%, it is **140.9330, -25.1100, 27.2458**.

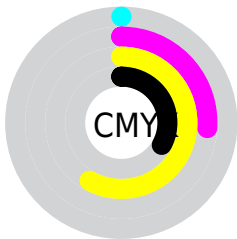
Distribution



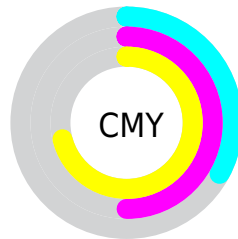
- Red (67%)
- Green (50%)
- Blue (29%)



- Red (61%)
- Yellow (67%)
- Blue (29%)



- Cyan (0%)
- Magenta (26%)
- Yellow (58%)
- Black (33%)



- Cyan (33%)
- Magenta (50%)
- Yellow (71%)

Brightness & Saturation Gradients

These gradients show how the YUV color 134.2990, -30.2204, 33.0638 changes by changing the brightness by 10 percent. The first figure shows a shift by +10% for each color and the second figure -10%.

Similar to the brightness gradients but the following saturation gradients show a change of the YUV color 134.2990, -30.2204, 33.0638 by changing the saturation by 10% instead.

■ 134.2990,
-30.2204, 33.0638

■ 134.2990,
-30.2204, 33.0638

■ 255.0000, 0.0000,
0.0000

■ 108.5160,
-29.3414, 31.1195

■ 188.4520,
-32.2678, 36.4376

■ 83.7330, -28.4624,
29.1752

■ 214.7400,
-32.4098, 35.3080

■ 59.3090, -28.7463,
26.9160

■ 234.2540,
-28.7192, 18.1942

■ 39.0940, -19.2733,
21.8426

■ 249.1860,
-22.2767, 5.0989

■ 19.2920, -9.5110,
17.2839

■ 252.3780,
-10.0464, 2.2995

■ 0.0000, 0.0000,
0.0000

■ 134.2990,
-30.2204, 33.0638

■ 134.2990,
-30.2204, 33.0638

■ 127.6650,
-35.3308, 38.8818

■ 140.9330,
-25.1100, 27.2458

■ 121.0310,
-40.4413, 44.6998

■ 147.5670,
-19.9995, 21.4277

■ 114.8700,
-46.2779, 50.1030

■ 153.7280,
-14.1629, 16.0245

■ 108.2360,
-51.3883, 55.9210

■ 160.3620, -9.0525,
10.2065

■ 106.6060,
-52.5568, 57.3505

■ 166.9960, -3.9420,
4.3885

■ 173.6300, 1.1684,
-1.4295

■ 180.2640, 6.2788,
-7.2475

■ 187.0120, 11.8261,

-13.1655

■ 193.0590, 17.2259,
-18.4687

Harmonies

Analogous

The Analogous color harmony consists of three colors that are next to each other on the color wheel.



136.1020, -21.2493, 49.0225



134.2990, -30.2204, 33.0638



131.4440, -30.2919, 9.2576

Triad

The Triadic color harmony groups three colors that are evenly spaced from another and form a triangle on the color wheel.



134.2990, -30.2204, 33.0638



106.7970, 20.8061, -93.6610



139.2340, 22.0696, 14.7038

Complementary

The Complementary color scheme is a pair of colors which are on the opposite of each other on the color wheel.



134.2990, -30.2204, 33.0638



110.7010, 30.2204, -33.0638

Split Complementary

Split-complementary colors differ from the complementary color scheme. The scheme consists of three colors, the original color and two neighbors of the complement color.



133.6360, 32.2245, -22.4828



134.2990, -30.2204, 33.0638



108.4560, 34.7782, -95.1159

Square

The Square scheme is like the rectangle color scheme, but the four colors are evenly spaced on the color wheel.



134.2990, -30.2204, 33.0638



119.9860, -2.4581, -51.7307



117.4510, 39.2177, -72.3095



139.4410, 8.1636, 41.7092

Rectangle

The Rectangle color scheme consists of four colors that form a rectangle on the color wheel.



134.2990, -30.2204, 33.0638



129.1150, -24.7067, -8.8709



117.4510, 39.2177, -72.3095



138.1940, 26.0334, 3.3379

Sweetspot

The Sweet Spot groups the original color and five complimentary colors.



134.2990, -30.2204, 33.0638



209.6890, -11.6787, 12.5507



107.8450, 5.4994, 56.2639



103.6220, -6.7156, 7.3475



240.0000, 0.0000, 0.0000



112.0000, 0.0000, 0.0000

Same Dimension

The Same Dimension uses a secret algorithm to generate beautiful new colors.



134.2990, -30.2204, 33.0638



165.3540, -47.0095, 51.4325



159.8170, -42.8008, 8.0535



83.6260, -2.7736, 2.9590



92.9840, -45.8411, 50.0030



14.5080, -7.1524, 7.4475

Inverse Universe

The Inverse Universe completely reimagines the original color for something new.



110.7010, 30.2204, -33.0638



128.6460, 47.0095, -51.4325



85.1830, 42.8008, -8.0535



81.3740, 2.7736, -2.9590



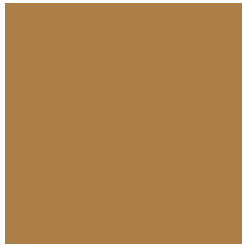
57.0160, 45.8411, -50.0030



8.4920, 7.1524, -7.4475

Previews

White Background



This preview shows how the YUV color 134.2990, -30.2204, 33.0638 looks on a white background.

Color Contrast Check

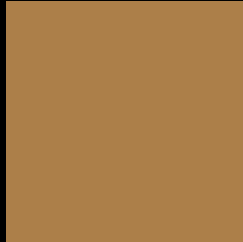
Large Text (above 18pt) WCAG AA ✓ Pass

Any Text WCAG AA × Fail

Large Text (above 18pt) WCAG AAA × Fail

Any Text WCAG AAA × Fail

Black Background



This preview shows how the YUV color 134.2990, -30.2204, 33.0638 looks on a black background.

Color Contrast Check

Large Text (above 18pt) WCAG AA ✓ Pass

Any Text WCAG AA ✓ Pass

Large Text (above 18pt) WCAG AAA ✓ Pass

Any Text WCAG AAA × Fail

If you want to check with other color combinations, try the [Color Contrast Checker](#).

YUV 134.2990, -30.2204, 33.0638

Background



This preview shows how black text looks on a background with the YUV color 134.2990, -30.2204, 33.0638.



This preview shows how white text looks on a background with the YUV color 134.2990, -30.2204,

Color Blindness Simulation

Color vision deficiency is a very complex topic, and I could not describe the different causes any better than Wikipedia does, so if you want to learn more, you should check out their [article about color blindness](#).

Dichromacy



Original Color

134.2990, -30.2204, 33.0638

Protanopia

133.0470, -28.1242, 13.9908

Deuteranopia

133.5650, -30.3515, 28.4455



Tritanopia

137.8840, -3.8868, 33.4277

Trichromacy



Original Color

134.2990, -30.2204, 33.0638

Protanomaly

133.5640, -28.8721, 20.5534

Deuteranomaly

133.5760, -30.3570, 30.1898

Tritanomaly

136.9520, -13.7803, 33.3681

Monochromacy



Original Color

134.2990, -30.2204, 33.0638

Achromatopsia

134.0000, 0.0000, 0.0000

Achromatomaly

133.9170, -10.8051, 12.3508

CSS Examples

Text

The CSS property to change the color of the text to YUV 134.2990, -30.2204, 33.0638 is called "color". The color property can be set on classes, ids or directly on the HTML element.

This example shows how text in the color `rgb(172, 127, 73)` looks like.

```
.text, #text, p{  
    color:rgb(172, 127, 73)  
}
```

If you want to add a text shadow in that color use the text-shadow property, you can generate a text shadow directly with our [CSS Text Shadow Generator](#).

Here you see how black text with a 4 pixel rgb(172, 127, 73) colored shadow looks like.

```
.shadow{ text-shadow: 4px 4px 2px rgb(172, 127, 73) }
```

Border

The CSS property to change the border of an element to YUV 134.2990, -30.2204, 33.0638 is called "border".

The border property can be set on classes, ids or directly on the HTML element.

This example shows the color as border, it can be applied via the CSS property "border" or "border-color".

```
.border, #border, table{ border:4px solid rgb(172, 127, 73) }
```


If only the border color should be changed use the property border-color.

```
.border{ border-color:rgb(172, 127, 73) }
```

If you want to add a box shadow in that color use:

Here you see how a box with a 4 pixel rgb(172, 127, 73) colored shadow looks like.

```
.boxshadow{ -moz-box-shadow:4px 4px 4px  
4px rgb(172, 127, 73); -webkit-box-  
shadow:4px 4px 4px 4px rgb(172, 127, 73);  
box-shadow:4px 4px 4px 4px rgb(172, 127,  
73) }
```

Background

The CSS property to change the background color of an element to YUV 134.2990, -30.2204, 33.0638 is called "background". The background property can be set on classes, ids or directly on the HTML element.

```
.background, #background, body{  
background: rgb(172, 127, 73) }
```

If only the background color should be changed can be used:

```
.background{ background-color: rgb(172,  
127, 73) }
```

This example shows the color as background, it is applied via the CSS property "background".

To optimize and compress your CSS code, you can use our [online CSS compressor and optimizer](#) based on csstidy. If you want to create a linear or radial gradient as background or border, check our [CSS Gradient Generator](#).

Hey! You found this booklet interesting? Support Converting Colors with the new Membership Option!

The pro membership hides all ads, plus gives you double the colors in the color bucket, and more awesome pro features!

[Learn more, Memberships starting at \\$2.50/m!](#)

**Follow me
on Twitter!**

@ConvertingColor