

Converting Colors

YUV(134.8560, -21.6210,
28.1903)

Have a look what the booklet for
YUV(134.8560, -21.6210, 28.1903)
contains.

YUV(134.8560, -21.6210, 28.1903)	3
<i>Conversions</i>	4
<i>Details</i>	6
<i>Harmonies</i>	12
<i>Previews</i>	24
<i>Color Blindness Simulation</i>	28
<i>CSS Examples</i>	31

Color

**YUV(134.8560, -21.6210,
28.1903)**

Conversions

Conversions Part 1

Format	Color
Hex	A77F5B
RGB	167, 127, 91
RGB Percent	65%, 50%, 36%
CMY	0.3451, 0.5020, 0.6431
CMYK	0.00, 0.24, 0.46, 0.35
HSL	28°, 30%, 51%
HSV	28°, 46%, 65%
XYZ	25.4140, 24.1496, 13.2194
YIQ	134.8560, 35.3960, -2.7160

Conversions

Conversions Part 2

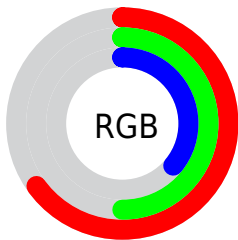
Format	Color
RYB	167, 159, 91
Decimal	10977115
CIELab	56.24, 10.75, 25.51
CIELCh	56, 27.686, 67.151
Yxy	24.1496, 0.4048, 0.3847
Android (android.graphics.Color)	4289167195 (0xFFA77F5B)
YUV	134.8560, -21.6210, 28.1903
Hunter-Lab	49.1422, 6.3130, 18.4504

Details

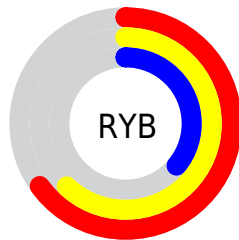
The YUV color **134.8560, -21.6210, 28.1903** is a dark color, and the websafe version is hex **CC9966**. A complement of this color would be **123.1440, 21.6210, -28.1903**, and the grayscale version is **135.0000, 0.0000, 0.0000**.

A 20% lighter version of the original color is **188.8240, -23.0842, 30.8494**, and **84.5890, -20.0104, 24.9164** is the 20% darker color. If you saturate the color by 10%, you get **127.6350, -26.4421, 34.5231**, and if you desaturate by 10%, it is **142.0770, -16.8000, 21.8575**.

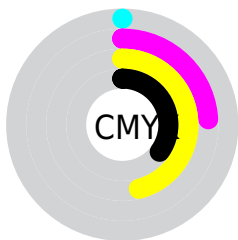
Distribution



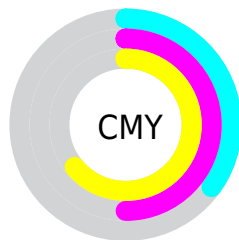
- Red (65%)
- Green (50%)
- Blue (36%)



- Red (65%)
- Yellow (62%)
- Blue (36%)



- Cyan (0%)
- Magenta (24%)
- Yellow (46%)
- Black (35%)



- Cyan (35%)
- Magenta (50%)
- Yellow (64%)

Brightness & Saturation Gradients

These gradients show how the YUV color 134.8560, -21.6210, 28.1903 changes by changing the brightness by 10 percent. The first figure shows a shift by +10% for each color and the second figure -10%.

Similar to the brightness gradients but the following saturation gradients show a change of the YUV color 134.8560, -21.6210, 28.1903 by changing the saturation by 10% instead.

■ 134.8560,
-21.6210, 28.1903

■ 134.8560,
-21.6210, 28.1903

■ 255.0000, 0.0000,
0.0000

■ 109.3720,
-20.8894, 26.8608

■ 188.8240,
-23.0842, 30.8494

■ 84.5890, -20.0104,
24.9164

■ 216.3080,
-23.8158, 32.1789

■ 60.9200, -18.6946,
22.8722

■ 237.0070,
-20.7095, 15.7799

■ 38.4960, -18.9785,
20.6130

■ 251.3520,
-13.9775, 3.1993

■ 18.9930, -9.3635,
16.6691

■ 254.6580, -1.3104,
0.2999

■ 0.0000, 0.0000,
0.0000

■ 134.8560,
-21.6210, 28.1903

■ 134.8560,
-21.6210, 28.1903

■ 127.6350,
-26.4421, 34.5231

■ 142.0770,
-16.8000, 21.8575

■ 120.5280,
-30.8263, 40.7559

■ 149.1840,
-12.4157, 15.6246

■ 113.8940,
-35.9367, 46.5740

■ 155.8180, -7.3053,
9.8066

■ 106.6730,
-40.7578, 52.9068

■ 163.0390, -2.4842,
3.4738

■ 99.4520, -45.5788,
59.2396

■ 170.1460, 1.9000,
-2.7590

■ 96.3060, -47.4789,
61.9986

■ 177.3670, 6.7211,
-9.0919

■ 184.5880, 11.5421,
-15.4247

■ 191.2220, 16.6526,

-21.2427

■ 198.3290, 21.0368,
-27.4755

Harmonies

Analogous

The Analogous color harmony consists of three colors that are next to each other on the color wheel.



136.4580, -14.5228, 38.1863



134.8560, -21.6210, 28.1903



132.8170, -22.5878, 11.5615

Triad

The Triadic color harmony groups three colors that are evenly spaced from another and form a triangle on the color wheel.



134.8560, -21.6210, 28.1903



121.6730, 9.0352, -51.4562



137.6260, 17.4394, 6.4670

Complementary

The Complementary color scheme is a pair of colors which are on the opposite of each other on the color wheel.



134.8560, -21.6210, 28.1903



123.1440, 21.6210, -28.1903

Split Complementary

Split-complementary colors differ from the complementary color scheme. The scheme consists of three colors, the original color and two neighbors of the complement color.



133.1820, 24.0673, -19.4536



134.8560, -21.6210, 28.1903



120.4190, 20.9924, -60.0035

Square

The Square scheme is like the rectangle color scheme, but the four colors are evenly spaced on the color wheel.



134.8560, -21.6210, 28.1903



126.0210, -5.4334, -30.7134



125.8860, 26.1852, -45.5040



138.2390, 7.7702, 27.8544

Rectangle

The Rectangle color scheme consists of four colors that form a rectangle on the color wheel.



134.8560, -21.6210, 28.1903



131.1250, -19.7816, -1.8636



125.8860, 26.1852, -45.5040



136.3800, 20.5187, -1.2103

Sweetspot

The Sweet Spot groups the original color and five complimentary colors.



134.8560, -21.6210, 28.1903



204.0740, -8.9105, 11.3361



118.3980, 6.7058, 42.6240



101.9640, -5.4053, 7.0476



237.0000, 0.0000, 0.0000



110.0000, 0.0000, 0.0000

Same Dimension

The Same Dimension uses a secret algorithm to generate beautiful new colors.



134.8560, -21.6210, 28.1903



166.4530, -33.7473, 44.3297



156.5750, -32.3285, 9.1427



80.7400, -2.3368, 2.8590



85.3420, -42.0736, 54.9511



11.8500, -5.8420, 7.1476

Inverse Universe

The Inverse Universe completely reimagines the original color for something new.



123.1440, 21.6210, -28.1903



147.9600, 34.0367, -43.8149



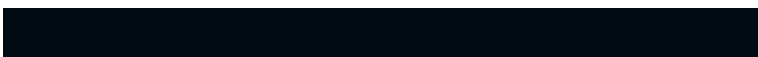
101.4250, 32.3285, -9.1427



79.2600, 2.3368, -2.8590



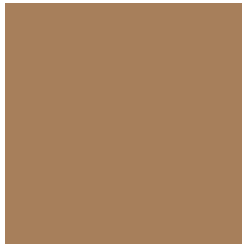
62.6580, 42.0736, -54.9511



8.7370, 5.5527, -7.6623

Previews

White Background



This preview shows how the YUV color 134.8560, -21.6210, 28.1903 looks on a white background.

Color Contrast Check

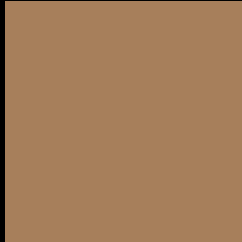
Large Text (above 18pt) WCAG AA ✓ Pass

Any Text WCAG AA × Fail

Large Text (above 18pt) WCAG AAA × Fail

Any Text WCAG AAA × Fail

Black Background



This preview shows how the YUV color 134.8560, -21.6210, 28.1903 looks on a black background.

Color Contrast Check

Large Text (above 18pt) WCAG AA ✓ Pass

Any Text WCAG AA ✓ Pass

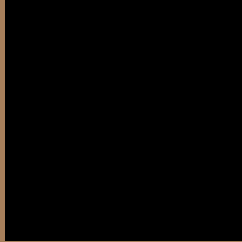
Large Text (above 18pt) WCAG AAA ✓ Pass

Any Text WCAG AAA × Fail

If you want to check with other color combinations, try the [Color Contrast Checker](#).

YUV 134.8560, -21.6210, 28.1903

Background



This preview shows how black text looks on a background with the YUV color 134.8560, -21.6210, 28.1903.



This preview shows how white text looks on a background with the YUV color 134.8560, -21.6210,

Color Blindness Simulation

Color vision deficiency is a very complex topic, and I could not describe the different causes any better than Wikipedia does, so if you want to learn more, you should check out their [article about color blindness](#).

Dichromacy



Original Color

134.8560, -21.6210, 28.1903

Protanopia

133.6150, -19.5302, 10.8616

Deuteranopia

134.5350, -21.4628, 24.0868



Tritanopia

137.6770, -3.2918, 29.2243

Trichromacy



Original Color

134.8560, -21.6210, 28.1903

Protanomaly

134.1320, -20.2781, 17.4242

Deuteranomaly

134.5460, -21.4682, 25.8312

Tritanomaly

136.8420, -10.2751, 29.0796

Monochromacy



Original Color

134.8560, -21.6210, 28.1903

Achromatopsia

135.0000, 0.0000, 0.0000

Achromatomaly

135.0030, -7.8895, 10.5214

CSS Examples

Text

The CSS property to change the color of the text to YUV 134.8560, -21.6210, 28.1903 is called "color". The color property can be set on classes, ids or directly on the HTML element.

This example shows how text in the color `rgb(167, 127, 91)` looks like.

```
.text, #text, p{  
    color:rgb(167, 127, 91)  
}
```

If you want to add a text shadow in that color use the text-shadow property, you can generate a text shadow directly with our [CSS Text Shadow Generator](#).

Here you see how black text with a 4 pixel rgb(167, 127, 91) colored shadow looks like.

```
.shadow{ text-shadow: 4px 4px 2px rgb(167, 127, 91) }
```

Border

The CSS property to change the border of an element to YUV 134.8560, -21.6210, 28.1903 is called "border".

The border property can be set on classes, ids or directly on the HTML element.

This example shows the color as border, it can be applied via the CSS property "border" or "border-color".

```
.border, #border, table{ border:4px solid rgb(167, 127, 91) }
```


If only the border color should be changed use the property `border-color`.

```
.border{ border-color:rgb(167, 127, 91) }
```

If you want to add a box shadow in that color use:

Here you see how a box with a 4 pixel `rgb(167, 127, 91)` colored shadow looks like.

```
.boxshadow{ -moz-box-shadow:4px 4px 4px  
4px rgb(167, 127, 91); -webkit-box-  
shadow:4px 4px 4px 4px rgb(167, 127, 91);  
box-shadow:4px 4px 4px 4px rgb(167, 127,  
91) }
```

Background

The CSS property to change the background color of an element to YUV 134.8560, -21.6210, 28.1903 is called "background". The background property can be set on classes, ids or directly on the HTML element.

```
.background, #background, body{  
background: rgb(167, 127, 91) }
```

If only the background color should be changed can be used:

```
.background{ background-color: rgb(167,  
127, 91) }
```

This example shows the color as background, it is applied via the CSS property "background".

To optimize and compress your CSS code, you can use our [online CSS compressor and optimizer](#) based on csstidy. If you want to create a linear or radial gradient as background or border, check our [CSS Gradient Generator](#).

Hey! You found this booklet interesting? Support Converting Colors with the new Membership Option!

The pro membership hides all ads, plus gives you double the colors in the color bucket, and more awesome pro features!

[Learn more, Memberships starting at \\$2.50/m!](#)

**Follow me
on Twitter!**

@ConvertingColor