

# Converting Colors

YUV(135.1450, -23.2425,  
34.9528)

Have a look what the booklet for  
YUV(135.1450, -23.2425, 34.9528)  
contains.

<b>YUV(135.1450, -23.2425, 34.9528)</b> .....	3
<b><i>Conversions</i></b> .....	4
<b><i>Details</i></b> .....	6
<b><i>Harmonies</i></b> .....	12
<b><i>Previews</i></b> .....	24
<b><i>Color Blindness Simulation</i></b> .....	28
<b><i>CSS Examples</i></b> .....	31

# Color

**YUV(135.1450, -23.2425,  
34.9528)**

# Conversions

## Conversions Part 1

<b>Format</b>	<b>Color</b>
Hex	AF7C58
RGB	175, 124, 88
RGB Percent	69%, 49%, 35%
CMY	0.3137, 0.5137, 0.6549
CMYK	0.00, 0.29, 0.50, 0.31
HSL	25°, 35%, 52%
HSV	25°, 50%, 69%
XYZ	26.6483, 24.2338, 12.5056
YIQ	135.1450, 41.9520, -0.3840

# Conversions

## Conversions Part 2

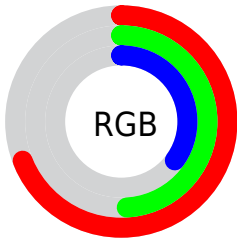
<b>Format</b>	<b>Color</b>
<b>R<sub>YB</sub></b>	175, 149, 88
Decimal	11500632
CIE <sub>Lab</sub>	56.32, 15.52, 27.47
CIE <sub>LCh</sub>	56, 31.555, 60.536
Yxy	24.2338, 0.4204, 0.3823
Android (android.graphics.Color)	4289690712 (0xFFAF7C58)
YUV	135.1450, -23.2425, 34.9528
Hunter-Lab	49.2279, 10.4778, 19.3978

# Details

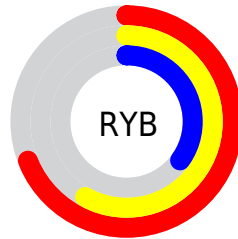
The YUV color **135.1450, -23.2425, 34.9528** is a dark color, and the websafe version is hex **996633**. A complement of this color would be **127.8550, 23.2425, -34.9528**, and the grayscale version is **135.0000, 0.0000, 0.0000**.

A 20% lighter version of the original color is **189.2980, -25.2899, 38.3267**, and **84.6930, -21.0476, 30.9642** is the 20% darker color. If you saturate the color by 10%, you get **127.2230, -28.2109, 41.9004**, and if you desaturate by 10%, it is **143.0670, -18.2740, 28.0052**.

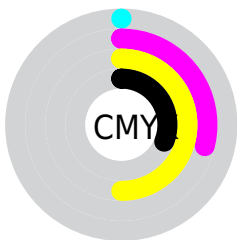
# Distribution



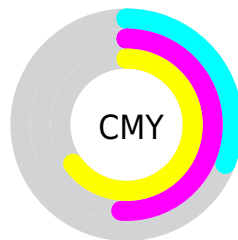
- Red (69%)
- Green (49%)
- Blue (35%)



- Red (69%)
- Yellow (58%)
- Blue (35%)



- Cyan (0%)
- Magenta (29%)
- Yellow (50%)
- Black (31%)



- Cyan (31%)
- Magenta (51%)
- Yellow (65%)

# Brightness & Saturation Gradients

These gradients show how the YUV color 135.1450, -23.2425, 34.9528 changes by changing the brightness by 10 percent. The first figure shows a shift by +10% for each color and the second figure -10%.

Similar to the brightness gradients but the following saturation gradients show a change of the YUV color 135.1450, -23.2425, 34.9528 by changing the saturation by 10% instead.



■ 135.1450,  
-23.2425, 34.9528

■ 135.1450,  
-23.2425, 34.9528

■ 255.0000, 0.0000,  
0.0000

■ 109.3620,  
-22.3635, 33.0085

■ 189.2980,  
-25.2899, 38.3267

■ 84.6930, -21.0476,  
30.9642

■ 214.8030,  
-24.5529, 35.2528

■ 60.6110, -20.0212,  
28.4052

■ 234.3170,  
-20.8623, 18.1390

■ 37.9420, -18.7054,  
26.3609

■ 251.0100,  
-15.2879, 3.4992

■ 17.8410, -8.7956,  
21.1874

■ 254.3160, -2.6208,  
0.5999

■ 0.0000, 0.0000,  
0.0000

■ 135.1450,  
-23.2425, 34.9528

■ 135.1450,  
-23.2425, 34.9528

■ 127.2230,  
-28.2109, 41.9004

■ 143.0670,  
-18.2740, 28.0052

■ 118.8280,  
-32.4532, 49.2628

■ 151.4620,  
-14.0318, 20.6428

■ 110.9060,  
-37.4217, 56.2104

■ 159.2700, -9.5001,  
13.7952

■ 103.0980,  
-41.9533, 63.0581

■ 167.1920, -4.5317,  
6.8476

■ 95.1760, -46.9218,  
70.0056

■ 175.1140, 0.4368,  
-0.1000

■ 94.5890, -46.6324,  
70.5204

■ 183.5090, 4.6791,  
-7.4624

■ 191.4310, 9.6475,  
-14.4100

■ 199.2390, 14.1792,

-21.2576

■ 207.1610, 19.1476,  
-28.2052

# Harmonies

## Analogous

The Analogous color harmony consists of three colors that are next to each other on the color wheel.



136.4310, -13.5235, 44.3490



135.1450, -23.2425, 34.9528



133.5250, -26.3878, 17.0796

# Triad

The Triadic color harmony groups three colors that are evenly spaced from another and form a triangle on the color wheel.



135.1450, -23.2425, 34.9528



119.5860, 7.5991, -57.5189



137.4450, 21.9656, 1.3637

# Complementary

The Complementary color scheme is a pair of colors which are on the opposite of each other on the color wheel.



135.1450, -23.2425, 34.9528



127.8550, 23.2425, -34.9528

# Split Complementary

Split-complementary colors differ from the complementary color scheme. The scheme consists of three colors, the original color and two neighbors of the complement color.



131.3700, 28.9046, -31.0195



135.1450, -23.2425, 34.9528



111.3130, 24.9887, -81.8355

# Square

The Square scheme is like the rectangle color scheme, but the four colors are evenly spaced on the color wheel.



135.1450, -23.2425, 34.9528



125.6960, -9.2171, -30.4284



119.9160, 30.6074, -63.9473



138.5640, 11.5539, 27.5694



# Rectangle

The Rectangle color scheme consists of four colors that form a rectangle on the color wheel.



135.1450, -23.2425, 34.9528



131.1210, -23.7237, 2.5249



119.9160, 30.6074, -63.9473



135.7750, 24.7609, -8.5727

# Sweetspot

The Sweet Spot groups the original color and five complimentary colors.



135.1450, -23.2425, 34.9528



211.3840, -9.0633, 13.6952



119.9410, 9.8891, 48.2867



105.5620, -5.7001, 8.2771



242.0000, 0.0000, 0.0000



115.0000, 0.0000, 0.0000



# Same Dimension

The Same Dimension uses a secret algorithm to generate beautiful new colors.



135.1450, -23.2425, 34.9528



164.5360, -36.2532, 54.7809



159.7990, -35.3969, 13.3313



83.0390, -2.4842, 3.4738



81.2440, -40.0533, 60.2990



12.1600, -5.9949, 9.5067



# Inverse Universe

The Inverse Universe completely reimagines the original color for something new.



127.8550, 23.2425, -34.9528



153.4640, 36.2532, -54.7809



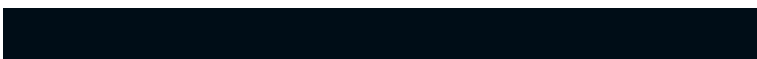
103.2010, 35.3969, -13.3313



81.9610, 2.4842, -3.4738



68.7560, 40.0533, -60.2990

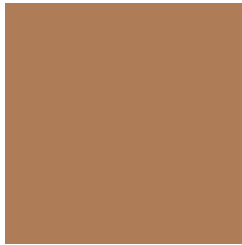


10.2530, 6.2843, -8.9919



# Previews

## White Background



This preview shows how the YUV color 135.1450, -23.2425, 34.9528 looks on a white background.

## Color Contrast Check

Large Text (above 18pt) WCAG AA ✓ Pass

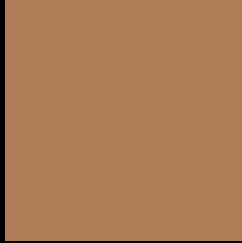
Any Text WCAG AA × Fail

Large Text (above 18pt) WCAG AAA × Fail

Any Text WCAG AAA × Fail



# Black Background



This preview shows how the YUV color 135.1450, -23.2425, 34.9528 looks on a black background.

## Color Contrast Check

Large Text (above 18pt) WCAG AA ✓ Pass

Any Text WCAG AA ✓ Pass

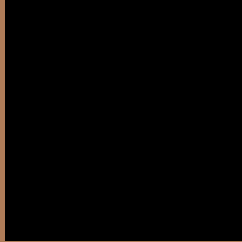
Large Text (above 18pt) WCAG AAA ✓ Pass

Any Text WCAG AAA × Fail

If you want to check with other color combinations, try the [Color Contrast Checker](#).

# YUV 135.1450, -23.2425, 34.9528

## Background



This preview shows how black text looks on a background with the YUV color 135.1450, -23.2425, 34.9528.



This preview shows how white text looks on a background with the YUV color 135.1450, -23.2425,

34.9528.

# Color Blindness Simulation

Color vision deficiency is a very complex topic, and I could not describe the different causes any better than Wikipedia does, so if you want to learn more, you should check out their [article about color blindness](#).

## Dichromacy



### Original Color

135.1450, -23.2425, 34.9528

### Protanopia

133.5010, -19.9670, 10.9616

### Deuteranopia

134.3780, -23.3574, 25.1015



## Tritanopia

137.6670, -4.7658, 35.3720

# Trichromacy



## Original Color

135.1450, -23.2425, 34.9528

## Protanomaly

134.2140, -21.3045, 19.9833

## Deuteranomaly

134.4000, -23.3682, 28.5902

## Tritanomaly

136.8320, -11.7492, 35.2273

# Monochromacy



## Original Color

135.1450, -23.2425, 34.9528

## Achromatopsia

135.0000, 0.0000, 0.0000

## Achromatomaly

135.1990, -8.4791, 12.9805

# CSS Examples

## Text

The CSS property to change the color of the text to YUV 135.1450, -23.2425, 34.9528 is called "color". The color property can be set on classes, ids or directly on the HTML element.

This example shows how text in the color `rgb(175, 124, 88)` looks like.

```
.text, #text, p{  
    color:rgb(175, 124, 88)  
}
```

If you want to add a text shadow in that color use the text-shadow property, you can generate a text shadow directly with our [CSS Text Shadow Generator](#).

Here you see how black text with a 4 pixel rgb(175, 124, 88) colored shadow looks like.

```
.shadow{ text-shadow: 4px 4px 2px rgb(175, 124, 88) }
```

## Border

The CSS property to change the border of an element to YUV 135.1450, -23.2425, 34.9528 is called "border".

The border property can be set on classes, ids or directly on the HTML element.

This example shows the color as border, it can be applied via the CSS property "border" or "border-color".

```
.border, #border, table{ border:4px solid rgb(175, 124, 88) }
```



If only the border color should be changed use the property `border-color`.

```
.border{ border-color:rgb(175, 124, 88) }
```

If you want to add a box shadow in that color use:

Here you see how a box with a 4 pixel `rgb(175, 124, 88)` colored shadow looks like.

```
.boxshadow{ -moz-box-shadow:4px 4px 4px  
4px rgb(175, 124, 88); -webkit-box-  
shadow:4px 4px 4px 4px rgb(175, 124, 88);  
box-shadow:4px 4px 4px 4px rgb(175, 124,  
88) }
```

# Background

The CSS property to change the background color of an element to YUV 135.1450, -23.2425, 34.9528 is called "background". The background property can be set on classes, ids or directly on the HTML element.

```
.background, #background, body{  
background: rgb(175, 124, 88) }
```

If only the background color should be changed can be used:

```
.background{ background-color: rgb(175,  
124, 88) }
```

This example shows the color as background, it is applied via the CSS property "background".

To optimize and compress your CSS code, you can use our [online CSS compressor and optimizer](#) based on csstidy. If you want to create a linear or radial gradient as background or border, check our [CSS Gradient Generator](#).

Hey! You found this booklet interesting? Support Converting Colors with the new Membership Option!

The pro membership hides all ads, plus gives you double the colors in the color bucket, and more awesome pro features!

**[Learn more, Memberships starting at \\$2.50/m!](#)**

**Follow me  
on Twitter!**

@ConvertingColor