

Converting Colors

YUV(135.3760, -30.2584,
45.2742)

Have a look what the booklet for
YUV(135.3760, -30.2584, 45.2742)
contains.

YUV(135.3760, -30.2584, 45.2742)	3
Conversions	4
Details	6
Harmonies	12
Previews	24
Color Blindness Simulation	28
CSS Examples	31

Color

**YUV(135.3760, -30.2584,
45.2742)**

Conversions

Conversions Part 1

Format	Color
Hex	BB794A
RGB	187, 121, 74
RGB Percent	73%, 47%, 29%
CMY	0.2667, 0.5255, 0.7098
CMYK	0.00, 0.35, 0.60, 0.27
HSL	25°, 45%, 51%
HSV	25°, 60%, 73%
XYZ	28.5669, 24.7340, 9.7471
YIQ	135.3760, 54.4230, -0.6250

Conversions

Conversions Part 2

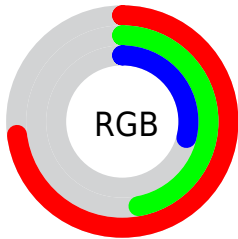
Format	Color
R_{YB}	187, 154, 74
Decimal	12286282
CIE _{Lab}	56.82, 21.06, 36.08
CIE _{LCh}	57, 41.775, 59.720
Yxy	24.7340, 0.4531, 0.3923
Android (android.graphics.Color)	4290476362 (0xFFBB794A)
YUV	135.3760, -30.2584, 45.2742
Hunter-Lab	49.7332, 15.4978, 23.1932

Details

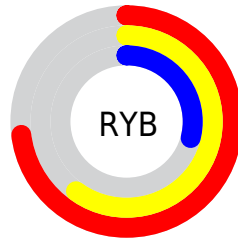
The YUV color **135.3760, -30.2584, 45.2742** is a dark color, and the websafe version is hex **996633**. A complement of this color would be **125.6240, 30.2584, -45.2742**, and the grayscale version is **136.0000, 0.0000, 0.0000**.

A 20% lighter version of the original color is **189.8280, -32.4532, 49.2628**, and **84.2120, -28.2055, 40.1561** is the 20% darker color. If you saturate the color by 10%, you get **126.7530, -35.3742, 52.8366**, and if you desaturate by 10%, it is **143.9990, -25.1425, 37.7119**.

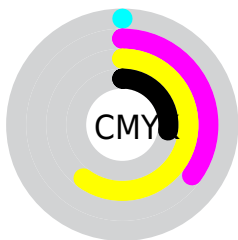
Distribution



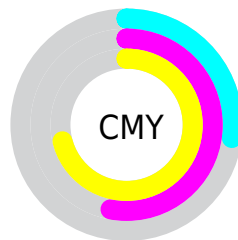
- Red (73%)
- Green (47%)
- Blue (29%)



- Red (73%)
- Yellow (60%)
- Blue (29%)



- Cyan (0%)
- Magenta (35%)
- Yellow (60%)
- Black (27%)



- Cyan (27%)
- Magenta (53%)
- Yellow (71%)

Brightness & Saturation Gradients

These gradients show how the YUV color 135.3760, -30.2584, 45.2742 changes by changing the brightness by 10 percent. The first figure shows a shift by +10% for each color and the second figure -10%.

Similar to the brightness gradients but the following saturation gradients show a change of the YUV color 135.3760, -30.2584, 45.2742 by changing the saturation by 10% instead.

■ 135.3760,
-30.2584, 45.2742

■ 135.3760,
-30.2584, 45.2742

■ 255.0000, 0.0000,
0.0000

■ 109.2940,
-29.2319, 42.7152

■ 189.8280,
-32.4532, 49.2628

■ 84.2120, -28.2055,
40.1561

■ 211.3320,
-30.2367, 38.2968

■ 59.6030, -27.9053,
37.1822

■ 230.8460,
-26.5461, 21.1831

■ 38.2740, -18.8691,
32.2087

■ 249.3000,
-21.8399, 4.9989

■ 17.5860, -8.6699,
27.5501

■ 252.4920, -9.6096,
2.1995

■ 5.0830, -2.5059,
10.4512

■ 0.0000, 0.0000,

0.0000

■ 135.3760,
-30.2584, 45.2742

■ 135.3760,
-30.2584, 45.2742

■ 126.7530,
-35.3742, 52.8366

■ 143.9990,
-25.1425, 37.7119

■ 118.2440,
-40.0533, 60.2990

■ 152.5080,
-20.4634, 30.2495

■ 109.6210,
-45.1692, 67.8614

■ 161.1310,
-15.3476, 22.6871

■ 101.6990,
-50.1376, 74.8090

■ 169.7540,
-10.2317, 15.1247

■ 178.3770, -5.1159,
7.5624

■ 186.8860, -0.4368,
0.1000

■ 194.9220, 4.9685,
-6.9476

■ 203.5450, 10.0843,
-14.5100

■ 212.0540, 14.7634,
-21.9724

Harmonies

Analogous

The Analogous color harmony consists of three colors that are next to each other on the color wheel.



136.3080, -16.9138, 58.4889



135.3760, -30.2584, 45.2742



132.8540, -35.4240, 22.0530

Triad

The Triadic color harmony groups three colors that are evenly spaced from another and form a triangle on the color wheel.



135.3760, -30.2584, 45.2742



106.3750, 14.1121, -93.2909



138.6110, 30.2648, -0.5358

Complementary

The Complementary color scheme is a pair of colors which are on the opposite of each other on the color wheel.



135.3760, -30.2584, 45.2742



125.6240, 30.2584, -45.2742

Split Complementary

Split-complementary colors differ from the complementary color scheme. The scheme consists of three colors, the original color and two neighbors of the complement color.



127.2350, 40.3101, -49.3181



135.3760, -30.2584, 45.2742



109.8920, 30.1262, -96.3753

Square

The Square scheme is like the rectangle color scheme, but the four colors are evenly spaced on the color wheel.



135.3760, -30.2584, 45.2742



122.8210, -12.2368, -41.9390



110.6220, 43.0774, -97.0155



140.2860, 16.6210, 35.7062

Rectangle

The Rectangle color scheme consists of four colors that form a rectangle on the color wheel.



135.3760, -30.2584, 45.2742



130.8300, -32.4542, 2.7801



110.6220, 43.0774, -97.0155



136.4350, 33.8025, -15.2905

Sweetspot

The Sweet Spot groups the original color and five complimentary colors.



135.3760, -30.2584, 45.2742



222.4230, -11.5475, 17.1690



115.5390, 13.0453, 62.6713



110.1170, -7.4527, 10.4214



250.0000, 0.0000, 0.0000



122.0000, 0.0000, 0.0000

Same Dimension

The Same Dimension uses a secret algorithm to generate beautiful new colors.



135.3760, -30.2584, 45.2742



161.3610, -47.5060, 70.7204



167.6610, -46.1749, 16.9603



90.0390, -2.4842, 3.4738



85.9840, -42.3901, 63.1580



16.9000, -8.3317, 12.3657

Inverse Universe

The Inverse Universe completely reimagines the original color for something new.



125.6240, 30.2584, -45.2742



146.2260, 47.2166, -71.2352



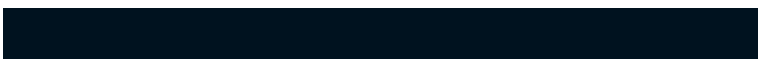
93.3390, 46.1749, -16.9603



88.9610, 2.4842, -3.4738



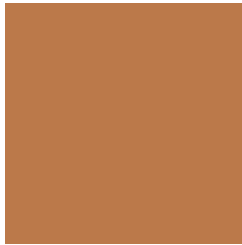
72.0160, 42.3901, -63.1580



14.1000, 8.3317, -12.3657

Previews

White Background



This preview shows how the YUV color 135.3760, -30.2584, 45.2742 looks on a white background.

Color Contrast Check

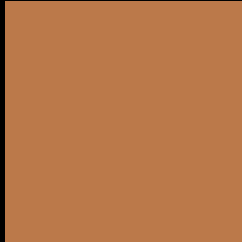
Large Text (above 18pt) WCAG AA ✓ Pass

Any Text WCAG AA × Fail

Large Text (above 18pt) WCAG AAA × Fail

Any Text WCAG AAA × Fail

Black Background



This preview shows how the YUV color 135.3760, -30.2584, 45.2742 looks on a black background.

Color Contrast Check

Large Text (above 18pt) WCAG AA ✓ Pass

Any Text WCAG AA ✓ Pass

Large Text (above 18pt) WCAG AAA ✓ Pass

Any Text WCAG AAA × Fail

If you want to check with other color combinations, try the [Color Contrast Checker](#).

YUV 135.3760, -30.2584, 45.2742

Background



This preview shows how black text looks on a background with the YUV color 135.3760, -30.2584, 45.2742.



This preview shows how white text looks on a background with the YUV color 135.3760, -30.2584,

Color Blindness Simulation

Color vision deficiency is a very complex topic, and I could not describe the different causes any better than Wikipedia does, so if you want to learn more, you should check out their [article about color blindness](#).

Dichromacy



Original Color

135.3760, -30.2584, 45.2742

Protanopia

134.3890, -26.8138, 13.6908

Deuteranopia

134.7500, -30.9357, 29.1603



Tritanopia

138.4510, -7.1243, 45.2085

Trichromacy



Original Color

135.3760, -30.2584, 45.2742

Protanomaly

134.5260, -27.8673, 24.9717

Deuteranomaly

135.1960, -30.6626, 34.9081

Tritanomaly

137.2740, -15.4181, 45.3637

Monochromacy



Original Color

135.3760, -30.2584, 45.2742

Achromatopsia

135.0000, 0.0000, 0.0000

Achromatomaly

135.2380, -10.9633, 16.4543

CSS Examples

Text

The CSS property to change the color of the text to YUV 135.3760, -30.2584, 45.2742 is called "color". The color property can be set on classes, ids or directly on the HTML element.

This example shows how text in the color `rgb(187, 121, 74)` looks like.

```
.text, #text, p{  
    color:rgb(187, 121, 74)  
}
```

If you want to add a text shadow in that color use the text-shadow property, you can generate a text shadow directly with our [CSS Text Shadow Generator](#).

Here you see how black text with a 4 pixel rgb(187, 121, 74) colored shadow looks like.

```
.shadow{ text-shadow: 4px 4px 2px rgb(187, 121, 74) }
```

Border

The CSS property to change the border of an element to YUV 135.3760, -30.2584, 45.2742 is called "border".

The border property can be set on classes, ids or directly on the HTML element.

This example shows the color as border, it can be applied via the CSS property "border" or "border-color".

```
.border, #border, table{ border:4px solid rgb(187, 121, 74) }
```


If only the border color should be changed use the property `border-color`.

```
.border{ border-color:rgb(187, 121, 74) }
```

If you want to add a box shadow in that color use:

Here you see how a box with a 4 pixel `rgb(187, 121, 74)` colored shadow looks like.

```
.boxshadow{ -moz-box-shadow:4px 4px 4px  
4px rgb(187, 121, 74); -webkit-box-  
shadow:4px 4px 4px 4px rgb(187, 121, 74);  
box-shadow:4px 4px 4px 4px rgb(187, 121,  
74) }
```

Background

The CSS property to change the background color of an element to YUV 135.3760, -30.2584, 45.2742 is called "background". The background property can be set on classes, ids or directly on the HTML element.

```
.background, #background, body{  
background: rgb(187, 121, 74) }
```

If only the background color should be changed can be used:

```
.background{ background-color: rgb(187,  
121, 74) }
```

This example shows the color as background, it is applied via the CSS property "background".

To optimize and compress your CSS code, you can use our [online CSS compressor and optimizer](#) based on csstidy. If you want to create a linear or radial gradient as background or border, check our [CSS Gradient Generator](#).

Hey! You found this booklet interesting? Support Converting Colors with the new Membership Option!

The pro membership hides all ads, plus gives you double the colors in the color bucket, and more awesome pro features!

[Learn more, Memberships starting at \\$2.50/m!](#)

**Follow me
on Twitter!**

@ConvertingColor