

Converting Colors

YUV(135.7180, -32.3990,
31.8193)

Have a look what the booklet for
YUV(135.7180, -32.3990, 31.8193)
contains.

YUV(135.7180, -32.3990, 31.8193)	3
<i>Conversions</i>	4
<i>Details</i>	6
<i>Harmonies</i>	12
<i>Previews</i>	24
<i>Color Blindness Simulation</i>	28
<i>CSS Examples</i>	31

Color

**YUV(135.7180, -32.3990,
31.8193)**

Conversions

Conversions Part 1

Format	Color
Hex	AC8246
RGB	172, 130, 70
RGB Percent	67%, 51%, 27%
CMY	0.3255, 0.4902, 0.7255
CMYK	0.00, 0.24, 0.59, 0.33
HSL	35°, 42%, 47%
HSV	35°, 59%, 67%
XYZ	26.1014, 25.1781, 9.2785
YIQ	135.7180, 44.2920, -9.7560

Conversions

Conversions Part 2

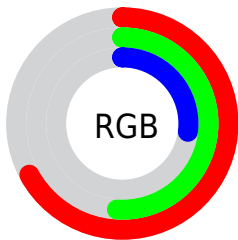
Format	Color
RYB	141, 172, 70
Decimal	11305542
CIELab	57.25, 9.27, 38.28
CIElCh	57, 39.386, 76.387
Yxy	25.1781, 0.4310, 0.4158
Android (android.graphics.Color)	4289495622 (0xFFAC8246)
YUV	135.7180, -32.3990, 31.8193
Hunter-Lab	50.1778, 5.0406, 24.1610

Details

The YUV color **135.7180, -32.3990, 31.8193** is a dark color, and the websafe version is hex **CC9966**. A complement of this color would be **106.2820, 32.3990, -31.8193**, and the grayscale version is **136.0000, 0.0000, 0.0000**.

A 20% lighter version of the original color is **189.8710, -34.4464, 35.1931**, and **85.0380, -31.0777, 28.0307** is the 20% darker color. If you saturate the color by 10%, you get **129.6710, -37.7988, 37.1225**, and if you desaturate by 10%, it is **141.7650, -26.9991, 26.5161**.

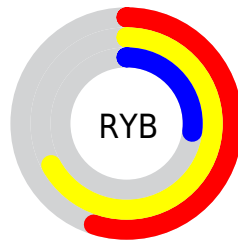
Distribution



Red (67%)

Green (51%)

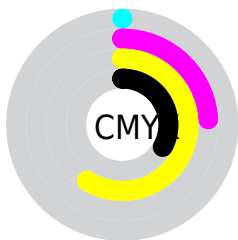
Blue (27%)



Red (55%)

Yellow (67%)

Blue (27%)

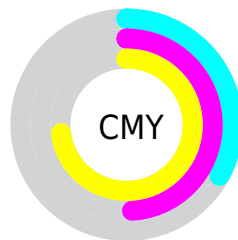


Cyan (0%)

Magenta (24%)

Yellow (59%)

Black (33%)



Cyan (33%)

Magenta (49%)

Yellow (73%)

Brightness & Saturation Gradients

These gradients show how the YUV color 135.7180, -32.3990, 31.8193 changes by changing the brightness by 10 percent. The first figure shows a shift by +10% for each color and the second figure -10%.

Similar to the brightness gradients but the following saturation gradients show a change of the YUV color 135.7180, -32.3990, 31.8193 by changing the saturation by 10% instead.

■ 135.7180,
-32.3990, 31.8193

■ 135.7180,
-32.3990, 31.8193

■ 255.0000, 0.0000,
0.0000

■ 109.9350,
-31.5200, 29.8750

■ 189.8710,
-34.4464, 35.1931

■ 85.0380, -31.0777,
28.0307

■ 216.1590,
-34.5884, 34.0636

■ 60.9560, -30.0513,
25.4716

■ 236.2600,
-31.1872, 16.4350

■ 40.2680, -19.8521,
20.8130

■ 248.8440,
-23.5871, 5.3988

■ 21.0530, -10.3791,
15.7395

■ 252.0360,
-11.3567, 2.5994

■ 0.0000, 0.0000,
0.0000

■ 135.7180,
-32.3990, 31.8193

■ 135.7180,
-32.3990, 31.8193

■ 129.6710,
-37.7988, 37.1225

■ 141.7650,
-26.9991, 26.5161

■ 123.6240,
-43.1986, 42.4258

■ 147.8120,
-21.5993, 21.2129

■ 117.4630,
-49.0353, 47.8289

■ 153.9730,
-15.7627, 15.8097

■ 111.4160,
-54.4351, 53.1322

■ 160.0200,
-10.3629, 10.5065

■ 110.7150,
-54.5825, 53.7469

■ 166.0670, -4.9630,
5.2032

■ 172.1140, 0.4368,
-0.1000

■ 178.7480, 5.5472,
-5.9180

■ 184.9090, 11.3839,

-11.3212

■ 190.9560, 16.7837,
-16.6244

Harmonies

Analogous

The Analogous color harmony consists of three colors that are next to each other on the color wheel.



137.7170, -24.0175, 50.2372



135.7180, -32.3990, 31.8193



132.4930, -31.3020, 6.5836

Triad

The Triadic color harmony groups three colors that are evenly spaced from another and form a triangle on the color wheel.



135.7180, -32.3990, 31.8193



108.7690, 23.2849, -95.3904



141.1530, 21.6166, 20.0368

Complementary

The Complementary color scheme is a pair of colors which are on the opposite of each other on the color wheel.



135.7180, -32.3990, 31.8193



106.2820, 32.3990, -31.8193

Split Complementary

Split-complementary colors differ from the complementary color scheme. The scheme consists of three colors, the original color and two neighbors of the complement color.



136.4840, 32.7924, -17.9645



135.7180, -32.3990, 31.8193



110.4280, 37.2570, -96.8454

Square

The Square scheme is like the rectangle color scheme, but the four colors are evenly spaced on the color wheel.



135.7180, -32.3990, 31.8193



118.7290, 0.6266, -61.1523



120.3200, 41.2542, -72.1946



140.8330, 6.9843, 46.6275

Rectangle

The Rectangle color scheme consists of four colors that form a rectangle on the color wheel.



135.7180, -32.3990, 31.8193



129.7940, -24.5484, -12.9743



120.3200, 41.2542, -72.1946



140.8140, 25.7277, 8.0561

Sweetspot

The Sweet Spot groups the original color and five complimentary colors.



135.7180, -32.3990, 31.8193



210.0480, -12.8417, 12.2359



105.2860, 3.3100, 58.5082



103.3940, -7.5892, 7.5475



240.0000, 0.0000, 0.0000



112.0000, 0.0000, 0.0000

Same Dimension

The Same Dimension uses a secret algorithm to generate beautiful new colors.



135.7180, -32.3990, 31.8193



167.7190, -50.6405, 49.3584



157.9800, -43.3741, 5.2795



83.6260, -2.7736, 2.9590



96.5060, -47.5775, 46.9142



14.5080, -7.1524, 7.4475

Inverse Universe

The Inverse Universe completely reimagines the original color for something new.



106.2820, 32.3990, -31.8193



121.8680, 50.3511, -49.8732



84.3190, 43.2267, -4.6648



81.3740, 2.7736, -2.9590



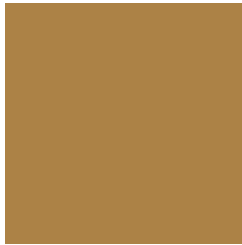
53.4940, 47.5775, -46.9142



7.9050, 7.4418, -6.9327

Previews

White Background



This preview shows how the YUV color 135.7180, -32.3990, 31.8193 looks on a white background.

Color Contrast Check

Large Text (above 18pt) WCAG AA ✓ Pass

Any Text WCAG AA × Fail

Large Text (above 18pt) WCAG AAA × Fail

Any Text WCAG AAA × Fail

Black Background



This preview shows how the YUV color 135.7180, -32.3990, 31.8193 looks on a black background.

Color Contrast Check

Large Text (above 18pt) WCAG AA ✓ Pass

Any Text WCAG AA ✓ Pass

Large Text (above 18pt) WCAG AAA ✓ Pass

Any Text WCAG AAA × Fail

If you want to check with other color combinations, try the [Color Contrast Checker](#).

YUV 135.7180, -32.3990, 31.8193

Background



This preview shows how black text looks on a background with the YUV color 135.7180, -32.3990, 31.8193.



This preview shows how white text looks on a background with the YUV color 135.7180, -32.3990,

Color Blindness Simulation

Color vision deficiency is a very complex topic, and I could not describe the different causes any better than Wikipedia does, so if you want to learn more, you should check out their [article about color blindness](#).

Dichromacy



Original Color

135.7180, -32.3990, 31.8193

Protanopia

134.7760, -30.4556, 15.1054

Deuteranopia

135.4080, -32.2461, 29.4602



Tritanopia

140.1720, -4.0288, 32.2982

Trichromacy



Original Color

135.7180, -32.3990, 31.8193

Protanomaly

134.9940, -31.0560, 21.0533

Deuteranomaly

135.7070, -32.3936, 30.0750

Tritanomaly

138.7130, -14.6485, 31.8237

Monochromacy



Original Color

135.7180, -32.3990, 31.8193

Achromatopsia

136.0000, 0.0000, 0.0000

Achromatomaly

135.9770, -11.8207, 11.4212

CSS Examples

Text

The CSS property to change the color of the text to YUV 135.7180, -32.3990, 31.8193 is called "color". The color property can be set on classes, ids or directly on the HTML element.

This example shows how text in the color `rgb(172, 130, 70)` looks like.

```
.text, #text, p{  
    color:rgb(172, 130, 70)  
}
```

If you want to add a text shadow in that color use the text-shadow property, you can generate a text shadow directly with our [CSS Text Shadow Generator](#).

Here you see how black text with a 4 pixel rgb(172, 130, 70) colored shadow looks like.

```
.shadow{ text-shadow: 4px 4px 2px rgb(172, 130, 70) }
```

Border

The CSS property to change the border of an element to YUV 135.7180, -32.3990, 31.8193 is called "border".

The border property can be set on classes, ids or directly on the HTML element.

This example shows the color as border, it can be applied via the CSS property "border" or "border-color".

```
.border, #border, table{ border:4px solid rgb(172, 130, 70) }
```


If only the border color should be changed use the property `border-color`.

```
.border{ border-color:rgb(172, 130, 70) }
```

If you want to add a box shadow in that color use:

Here you see how a box with a 4 pixel `rgb(172, 130, 70)` colored shadow looks like.

```
.boxshadow{ -moz-box-shadow:4px 4px 4px  
4px rgb(172, 130, 70); -webkit-box-  
shadow:4px 4px 4px 4px rgb(172, 130, 70);  
box-shadow:4px 4px 4px 4px rgb(172, 130,  
70) }
```

Background

The CSS property to change the background color of an element to YUV 135.7180, -32.3990, 31.8193 is called "background". The background property can be set on classes, ids or directly on the HTML element.

```
.background, #background, body{  
background: rgb(172, 130, 70) }
```

If only the background color should be changed can be used:

```
.background{ background-color: rgb(172,  
130, 70) }
```

This example shows the color as background, it is applied via the CSS property "background".

To optimize and compress your CSS code, you can use our [online CSS compressor and optimizer](#) based on csstidy. If you want to create a linear or radial gradient as background or border, check our [CSS Gradient Generator](#).

Hey! You found this booklet interesting? Support Converting Colors with the new Membership Option!

The pro membership hides all ads, plus gives you double the colors in the color bucket, and more awesome pro features!

[Learn more, Memberships starting at \\$2.50/m!](#)

**Follow me
on Twitter!**

@ConvertingColor