

# Converting Colors

YUV(135.8660, -2.8919,  
87.8175)

Have a look what the booklet for  
YUV(135.8660, -2.8919, 87.8175)  
contains.

<b>YUV(135.8660, -2.8919, 87.8175)</b> .....	3
<b><i>Conversions</i></b> .....	4
<b><i>Details</i></b> .....	6
<b><i>Harmonies</i></b> .....	12
<b><i>Previews</i></b> .....	24
<b><i>Color Blindness Simulation</i></b> .....	28
<b><i>CSS Examples</i></b> .....	31

# Color

**YUV(135.8660, -2.8919,  
87.8175)**

# Conversions

## Conversions Part 1

<b>Format</b>	<b>Color</b>
Hex	EC5682
RGB	236, 86, 130
RGB Percent	93%, 34%, 51%
CMY	0.0745, 0.6627, 0.4902
CMYK	0.00, 0.64, 0.45, 0.07
HSL	342°, 80%, 63%
HSV	342°, 64%, 93%
XYZ	41.9491, 26.1001, 23.9460
YIQ	135.8660, 75.2760, 45.4840

# Conversions

## Conversions Part 2

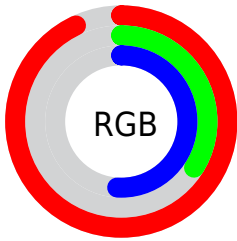
<b>Format</b>	<b>Color</b>
R <sub>Y</sub> B	236, 86, 130
Decimal	15488642
CIE Lab	58.13, 61.15, 7.09
CIE LCh	58, 61.560, 6.615
Yxy	26.1001, 0.4560, 0.2837
Android (android.graphics.Color)	4293678722 (0xFFEC5682)
YUV	135.8660, -2.8919, 87.8175
Hunter-Lab	51.0883, 57.1636, 7.9716

# Details

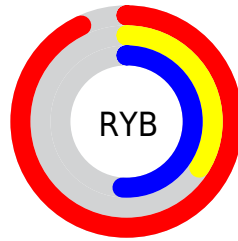
The YUV color **135.8660, -2.8919, 87.8175** is a light color, and the websafe version is hex **FF6699**. The color can be described as light muted rose. A complement of this color would be **186.1340, 2.8919, -87.8175**, and the grayscale version is **136.0000, 0.0000, 0.0000**.

A 20% lighter version of the original color is **181.0480, 0.9623, 64.8559**, and **72.1250, 4.3754, 90.2214** is the 20% darker color. If you saturate the color by 10%, you get **119.8400, -3.3721, 101.8723**, and if you desaturate by 10%, it is **151.8920, -2.4118, 73.7627**.

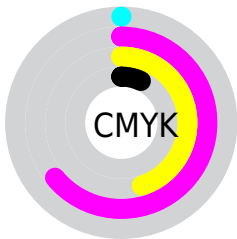
# Distribution



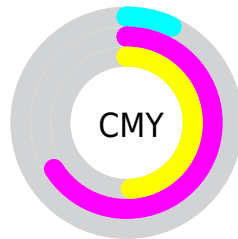
- Red (93%)
- Green (34%)
- Blue (51%)



- Red (93%)
- Yellow (34%)
- Blue (51%)



- Cyan (0%)
- Magenta (64%)
- Yellow (45%)
- Black (7%)



- Cyan (7%)
- Magenta (66%)
- Yellow (49%)

# Brightness & Saturation Gradients

These gradients show how the YUV color 135.8660, -2.8919, 87.8175 changes by changing the brightness by 10 percent. The first figure shows a shift by +10% for each color and the second figure -10%.

Similar to the brightness gradients but the following saturation gradients show a change of the YUV color 135.8660, -2.8919, 87.8175 by changing the saturation by 10% instead.



135.8660, -2.8919,  
87.8175

135.8660, -2.8919,  
87.8175

255.0000, 0.0000,  
0.0000

106.1370, -0.5605,  
86.7029

181.0480, 0.9623,  
64.8559

72.1250, 4.3754,  
90.2214

200.5620, 4.6529,  
47.7421

49.9670, 3.9603,  
83.3439

220.8910, 8.9277,  
29.9136

38.9020, -0.9377,  
67.6149

239.7380, 7.5242,  
13.3848

27.8370, -5.8356,  
51.8860

18.2820, -7.5340,  
36.5867

6.5780, -3.2430,

13.5251

■ 0.0000, 0.0000,  
0.0000

■ 135.8660, -2.8919,  
87.8175

■ 135.8660, -2.8919,  
87.8175

■ 119.8400, -3.3721,  
101.8723

■ 151.8920, -2.4118,  
73.7627

■ 104.5150, -3.7049,  
115.3123

■ 167.2170, -2.0790,  
60.3227

■ 88.4890, -4.1851,  
129.3671

■ 183.2430, -1.5988,  
46.2679

■ 78.4300, -4.6490,  
138.1889

■ 198.6820, -0.8292,  
32.7279

■ 214.5940, -0.7858,  
18.7731

■ 230.6200, -0.3057,  
4.7183

■ 246.0590, 0.4639,  
-8.8217

■ 249.3190, 2.8007,  
-11.6808

# Harmonies

## Analogous

The Analogous color harmony consists of three colors that are next to each other on the color wheel.



141.3140, 21.0442, 63.7456



135.8660, -2.8919, 87.8175



135.4760, -28.3357, 82.0205

# Triad

The Triadic color harmony groups three colors that are evenly spaced from another and form a triangle on the color wheel.



135.8660, -2.8919, 87.8175



125.6020, -40.2298, -23.3300



119.2910, 58.5235, -104.6182

# Complementary

The Complementary color scheme is a pair of colors which are on the opposite of each other on the color wheel.



135.8660, -2.8919, 87.8175



186.1340, 2.8919, -87.8175

# Split Complementary

Split-complementary colors differ from the complementary color scheme. The scheme consists of three colors, the original color and two neighbors of the complement color.



119.4100, 41.2099, -104.7226



135.8660, -2.8919, 87.8175



105.9240, -5.3855, -92.8953

# Square

The Square scheme is like the rectangle color scheme, but the four colors are evenly spaced on the color wheel.



135.8660, -2.8919, 87.8175



130.3230, -60.3052, 22.5187



114.0690, 18.2070, -100.0385



111.5120, 66.7956, -97.7960



# Rectangle

The Rectangle color scheme consists of four colors that form a rectangle on the color wheel.



135.8660, -2.8919, 87.8175



135.7780, -43.2746, 66.8467



114.0690, 18.2070, -100.0385



120.0260, 53.7242, -105.2628

# Sweetspot

The Sweet Spot groups the original color and five complimentary colors.



135.8660, -2.8919, 87.8175



222.9480, -0.9604, 28.1096



134.4950, 50.0420, 49.5549



107.9960, -0.4910, 17.5435



0.0000, 0.0000, 0.0000



128.0000, 0.0000, 0.0000



# Same Dimension

The Same Dimension uses a secret algorithm to generate beautiful new colors.



135.8660, -2.8919, 87.8175



125.5040, -3.6995, 113.5680



148.4600, -30.7928, 76.7726



109.6310, -0.3111, 6.4626



60.1610, -3.5304, 105.9758



17.9700, -0.9712, 31.5983



# Inverse Universe

The Inverse Universe completely reimagines the original color for something new.



135.8660, -2.8919, 87.8175



125.5040, -3.6995, 113.5680



173.5400, 30.7928, -76.7726



109.6310, -0.3111, 6.4626



60.1610, -3.5304, 105.9758



17.9700, -0.9712, 31.5983



# Previews

## White Background



This preview shows how the YUV color 135.8660, -2.8919, 87.8175 looks on a white background.

## Color Contrast Check

Large Text (above 18pt) WCAG AA ✓ Pass

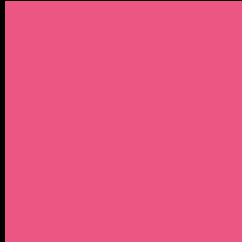
Any Text WCAG AA × Fail

Large Text (above 18pt) WCAG AAA × Fail

Any Text WCAG AAA × Fail



# Black Background



This preview shows how the YUV color 135.8660, -2.8919, 87.8175 looks on a black background.

## Color Contrast Check

Large Text (above 18pt) WCAG AA ✓ Pass

Any Text WCAG AA ✓ Pass

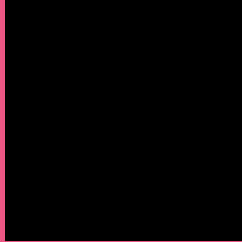
Large Text (above 18pt) WCAG AAA ✓ Pass

Any Text WCAG AAA × Fail

If you want to check with other color combinations, try the [Color Contrast Checker](#).

# YUV 135.8660, -2.8919, 87.8175

## Background



This preview shows how black text looks on a background with the YUV color 135.8660, -2.8919, 87.8175.



This preview shows how white text looks on a background with the YUV color 135.8660, -2.8919,



# Color Blindness Simulation

Color vision deficiency is a very complex topic, and I could not describe the different causes any better than Wikipedia does, so if you want to learn more, you should check out their [article about color blindness](#).

## Dichromacy



### Original Color

135.8660, -2.8919, 87.8175

### Protanopia

140.7960, 9.4676, -3.3291

### Deuteranopia

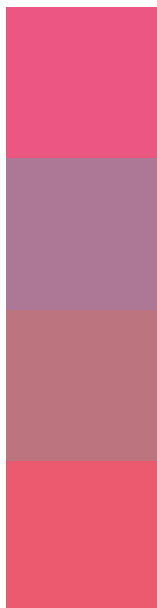
141.1070, -8.9268, 16.5692



## Tritanopia

135.1420, -18.3110, 86.6985

# Trichromacy



## Original Color

135.8660, -2.8919, 87.8175

## Protanomaly

139.1530, 4.8546, 29.6838

## Deuteranomaly

139.2550, -6.5347, 42.7494

## Tritanomaly

135.6350, -12.6381, 87.1431

# Monochromacy



## Original Color

135.8660, -2.8919, 87.8175

## Achromatopsia

136.0000, 0.0000, 0.0000

## Achromatomaly

135.9700, -0.9712, 31.5983

# CSS Examples

## Text

The CSS property to change the color of the text to YUV 135.8660, -2.8919, 87.8175 is called "color". The color property can be set on classes, ids or directly on the HTML element.

This example shows how text in the color `rgb(236, 86, 130)` looks like.

```
.text, #text, p{  
    color:rgb(236, 86, 130)  
}
```

If you want to add a text shadow in that color use the text-shadow property, you can generate a text shadow directly with our [CSS Text Shadow Generator](#).

Here you see how black text with a 4 pixel rgb(236, 86, 130) colored shadow looks like.

```
.shadow{ text-shadow: 4px 4px 2px rgb(236, 86, 130) }
```

## Border

The CSS property to change the border of an element to YUV 135.8660, -2.8919, 87.8175 is called "border". The border property can be set on classes, ids or directly on the HTML element.

This example shows the color as border, it can be applied via the CSS property "border" or "border-color".

```
.border, #border, table{ border:4px solid rgb(236, 86, 130) }
```



If only the border color should be changed use the property `border-color`.

```
.border{ border-color:rgb(236, 86, 130) }
```

If you want to add a box shadow in that color use:

Here you see how a box with a 4 pixel `rgb(236, 86, 130)` colored shadow looks like.

```
.boxshadow{ -moz-box-shadow:4px 4px 4px  
4px rgb(236, 86, 130); -webkit-box-  
shadow:4px 4px 4px 4px rgb(236, 86, 130);  
box-shadow:4px 4px 4px 4px rgb(236, 86,  
130) }
```

# Background

The CSS property to change the background color of an element to YUV 135.8660, -2.8919, 87.8175 is called "background". The background property can be set on classes, ids or directly on the HTML element.

```
.background, #background, body{  
background: rgb(236, 86, 130) }
```

If only the background color should be changed can be used:

```
.background{ background-color: rgb(236, 86,  
130) }
```

This example shows the color as background, it is applied via the CSS property "background".

To optimize and compress your CSS code, you can use our [online CSS compressor and optimizer](#) based on csstidy. If you want to create a linear or radial gradient as background or border, check our [CSS Gradient Generator](#).

Hey! You found this booklet interesting? Support Converting Colors with the new Membership Option!

The pro membership hides all ads, plus gives you double the colors in the color bucket, and more awesome pro features!

**[Learn more, Memberships starting at \\$2.50/m!](#)**

**Follow me  
on Twitter!**

@ConvertingColor