

Converting Colors

YUV(136.0050, -27.6105,
35.9526)

Have a look what the booklet for
YUV(136.0050, -27.6105, 35.9526)
contains.

YUV(136.0050, -27.6105, 35.9526)	3
<i>Conversions</i>	4
<i>Details</i>	6
<i>Harmonies</i>	12
<i>Previews</i>	24
<i>Color Blindness Simulation</i>	28
<i>CSS Examples</i>	31

Color

**YUV(136.0050, -27.6105,
35.9526)**

Conversions

Conversions Part 1

Format	Color
Hex	B17E50
RGB	177, 126, 80
RGB Percent	69%, 49%, 31%
CMY	0.3059, 0.5059, 0.6863
CMYK	0.00, 0.29, 0.55, 0.31
HSL	28°, 38%, 50%
HSV	28°, 55%, 69%
XYZ	27.0403, 24.8480, 10.9604
YIQ	136.0050, 45.1620, -3.4940

Conversions

Conversions Part 2

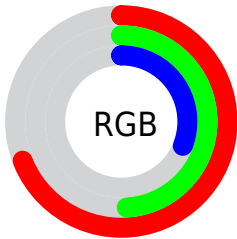
Format	Color
R_{YB}	177, 167, 80
Decimal	11632208
CIE _{Lab}	56.93, 14.51, 32.70
CIE _{LCh}	57, 35.773, 66.077
Yxy	24.8480, 0.4302, 0.3954
Android (android.graphics.Color)	4289822288 (0xFFB17E50)
YUV	136.0050, -27.6105, 35.9526
Hunter-Lab	49.8478, 9.5950, 21.8569

Details

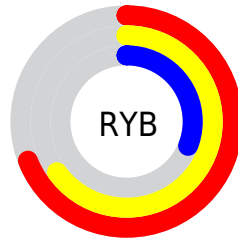
The YUV color **136.0050, -27.6105, 35.9526** is a dark color, and the websafe version is hex **996633**. A complement of this color would be **120.9950, 27.6105, -35.9526**, and the grayscale version is **136.0000, 0.0000, 0.0000**.

A 20% lighter version of the original color is **190.1580, -29.6579, 39.3264**, and **85.1400, -25.7050, 31.4492** is the 20% darker color. If you saturate the color by 10%, you get **128.6700, -32.8683, 42.3854**, and if you desaturate by 10%, it is **143.3400, -22.3526, 29.5198**.

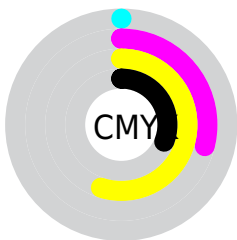
Distribution



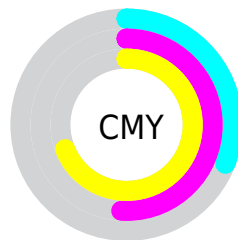
- Red (69%)
- Green (49%)
- Blue (31%)



- Red (69%)
- Yellow (65%)
- Blue (31%)



- Cyan (0%)
- Magenta (29%)
- Yellow (55%)
- Black (31%)



- Cyan (31%)
- Magenta (51%)
- Yellow (69%)

Brightness & Saturation Gradients

These gradients show how the YUV color 136.0050, -27.6105, 35.9526 changes by changing the brightness by 10 percent. The first figure shows a shift by +10% for each color and the second figure -10%.

Similar to the brightness gradients but the following saturation gradients show a change of the YUV color 136.0050, -27.6105, 35.9526 by changing the saturation by 10% instead.

■ 136.0050,
-27.6105, 35.9526

■ 136.0050,
-27.6105, 35.9526

■ 255.0000, 0.0000,
0.0000

■ 110.2220,
-26.7314, 34.0083

■ 190.1580,
-29.6579, 39.3264

■ 85.1400, -25.7050,
31.4492

■ 214.9510,
-29.0628, 35.1230

■ 60.9440, -25.1154,
28.9901

■ 234.5790,
-24.9354, 17.9092

■ 39.4150, -19.4316,
25.9460

■ 249.9840,
-19.2191, 4.3990

■ 19.9010, -9.8112,
20.2578

■ 253.2900, -6.5520,
1.4997

■ 0.8970, -0.4422,
1.8443

■ 0.0000, 0.0000,

0.0000

■ 136.0050,
-27.6105, 35.9526

■ 136.0050,
-27.6105, 35.9526

■ 128.6700,
-32.8683, 42.3854

■ 143.3400,
-22.3526, 29.5198

■ 120.8620,
-37.4000, 49.2330

■ 151.1480,
-17.8210, 22.6722

■ 113.5270,
-42.6578, 55.6658

■ 158.4830,
-12.5631, 16.2394

■ 106.1920,
-47.9157, 62.0986

■ 165.8180, -7.3053,
9.8066

■ 102.2310,
-50.3999, 65.5724

■ 173.7400, -2.3368,
2.8590

■ 180.9610, 2.4842,
-3.4738

■ 188.2960, 7.7421,
-9.9066

■ 195.6310, 12.9999,
-16.3394

■ 203.4390, 17.5316,
-23.1870

Harmonies

Analogous

The Analogous color harmony consists of three colors that are next to each other on the color wheel.



137.6120, -18.0497, 49.4523



136.0050, -27.6105, 35.9526



133.5910, -29.8714, 14.3907

Triad

The Triadic color harmony groups three colors that are evenly spaced from another and form a triangle on the color wheel.



136.0050, -27.6105, 35.9526



110.1850, 15.6848, -84.3542



139.5320, 23.4017, 7.4264

Complementary

The Complementary color scheme is a pair of colors which are on the opposite of each other on the color wheel.



136.0050, -27.6105, 35.9526



120.9950, 27.6105, -35.9526

Split Complementary

Split-complementary colors differ from the complementary color scheme. The scheme consists of three colors, the original color and two neighbors of the complement color.



133.4780, 31.8093, -29.3602



136.0050, -27.6105, 35.9526



108.8320, 31.1418, -95.4457

Square

The Square scheme is like the rectangle color scheme, but the four colors are evenly spaced on the color wheel.



136.0050, -27.6105, 35.9526



124.2000, -7.0006, -41.3944



116.9620, 37.4867, -77.1427



140.7930, 10.9481, 35.2615

Rectangle

The Rectangle color scheme consists of four colors that form a rectangle on the color wheel.



136.0050, -27.6105, 35.9526



131.5180, -25.8914, -2.2083



116.9620, 37.4867, -77.1427



138.3780, 26.9286, -3.8395

Sweetspot

The Sweet Spot groups the original color and five complimentary colors.



136.0050, -27.6105, 35.9526



214.0420, -10.3737, 13.9952



114.9310, 8.4150, 54.4345



105.4480, -6.1369, 8.3771



242.0000, 0.0000, 0.0000



115.0000, 0.0000, 0.0000

Same Dimension

The Same Dimension uses a secret algorithm to generate beautiful new colors.



136.0050, -27.6105, 35.9526



165.7120, -43.2420, 56.3806



164.1810, -41.5012, 11.2423



85.6260, -2.7736, 2.9590



88.5980, -43.6788, 56.4806



14.8180, -7.3053, 9.8066

Inverse Universe

The Inverse Universe completely reimagines the original color for something new.



120.9950, 27.6105, -35.9526



142.2880, 43.2420, -56.3806



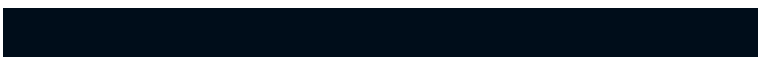
92.8190, 41.5012, -11.2423



83.9610, 2.4842, -3.4738



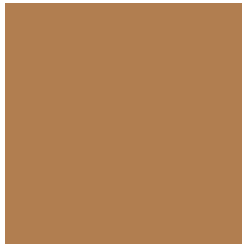
64.4020, 43.6788, -56.4806



10.5950, 7.5947, -9.2918

Previews

White Background



This preview shows how the YUV color 136.0050, -27.6105, 35.9526 looks on a white background.

Color Contrast Check

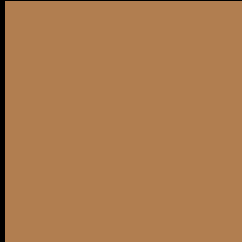
Large Text (above 18pt) WCAG AA ✓ Pass

Any Text WCAG AA × Fail

Large Text (above 18pt) WCAG AAA × Fail

Any Text WCAG AAA × Fail

Black Background



This preview shows how the YUV color 136.0050, -27.6105, 35.9526 looks on a black background.

Color Contrast Check

Large Text (above 18pt) WCAG AA ✓ Pass

Any Text WCAG AA ✓ Pass

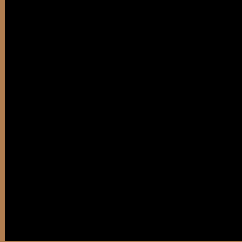
Large Text (above 18pt) WCAG AAA ✓ Pass

Any Text WCAG AAA × Fail

If you want to check with other color combinations, try the [Color Contrast Checker](#).

YUV 136.0050, -27.6105, 35.9526

Background



This preview shows how black text looks on a background with the YUV color 136.0050, -27.6105, 35.9526.



This preview shows how white text looks on a background with the YUV color 136.0050, -27.6105,

35.9526.

Color Blindness Simulation

Color vision deficiency is a very complex topic, and I could not describe the different causes any better than Wikipedia does, so if you want to learn more, you should check out their [article about color blindness](#).

Dichromacy



Original Color

136.0050, -27.6105, 35.9526

Protanopia

134.8450, -25.0666, 13.2909

Deuteranopia

135.8360, -28.0201, 27.3308



Tritanopia

139.2650, -5.0606, 36.6016

Trichromacy



Original Color

136.0050, -27.6105, 35.9526

Protanomaly

135.3730, -25.8199, 21.5979

Deuteranomaly

135.8580, -28.0310, 30.8195

Tritanomaly

138.0880, -13.3544, 36.7568

Monochromacy



Original Color

136.0050, -27.6105, 35.9526

Achromatopsia

136.0000, 0.0000, 0.0000

Achromatomaly

135.8570, -9.7895, 13.2804

CSS Examples

Text

The CSS property to change the color of the text to YUV 136.0050, -27.6105, 35.9526 is called "color". The color property can be set on classes, ids or directly on the HTML element.

This example shows how text in the color `rgb(177, 126, 80)` looks like.

```
.text, #text, p{  
    color:rgb(177, 126, 80)  
}
```

If you want to add a text shadow in that color use the text-shadow property, you can generate a text shadow directly with our [CSS Text Shadow Generator](#).

Here you see how black text with a 4 pixel rgb(177, 126, 80) colored shadow looks like.

```
.shadow{ text-shadow: 4px 4px 2px rgb(177, 126, 80) }
```

Border

The CSS property to change the border of an element to YUV 136.0050, -27.6105, 35.9526 is called "border".

The border property can be set on classes, ids or directly on the HTML element.

This example shows the color as border, it can be applied via the CSS property "border" or "border-color".

```
.border, #border, table{ border:4px solid rgb(177, 126, 80) }
```


If only the border color should be changed use the property `border-color`.

```
.border{ border-color:rgb(177, 126, 80) }
```

If you want to add a box shadow in that color use:

Here you see how a box with a 4 pixel `rgb(177, 126, 80)` colored shadow looks like.

```
.boxshadow{ -moz-box-shadow:4px 4px 4px  
4px rgb(177, 126, 80); -webkit-box-  
shadow:4px 4px 4px 4px rgb(177, 126, 80);  
box-shadow:4px 4px 4px 4px rgb(177, 126,  
80) }
```

Background

The CSS property to change the background color of an element to YUV 136.0050, -27.6105, 35.9526 is called "background". The background property can be set on classes, ids or directly on the HTML element.

```
.background, #background, body{  
background: rgb(177, 126, 80) }
```

If only the background color should be changed can be used:

```
.background{ background-color: rgb(177,  
126, 80) }
```

This example shows the color as background, it is applied via the CSS property "background".

To optimize and compress your CSS code, you can use our [online CSS compressor and optimizer](#) based on csstidy. If you want to create a linear or radial gradient as background or border, check our [CSS Gradient Generator](#).

Hey! You found this booklet interesting? Support Converting Colors with the new Membership Option!

The pro membership hides all ads, plus gives you double the colors in the color bucket, and more awesome pro features!

[Learn more, Memberships starting at \\$2.50/m!](#)

**Follow me
on Twitter!**

@ConvertingColor