

Converting Colors

YUV(136.1030, -9.4178,
34.1127)

Have a look what the booklet for
YUV(136.1030, -9.4178, 34.1127)
contains.

YUV(136.1030, -9.4178, 34.1127)	3
<i>Conversions</i>	4
<i>Details</i>	6
<i>Harmonies</i>	12
<i>Previews</i>	24
<i>Color Blindness Simulation</i>	28
<i>CSS Examples</i>	31

Color

**YUV(136.1030, -9.4178,
34.1127)**

Conversions

Conversions Part 1

Format	Color
Hex	AF7875
RGB	175, 120, 117
RGB Percent	69%, 47%, 46%
CMY	0.3137, 0.5294, 0.5412
CMYK	0.00, 0.31, 0.33, 0.31
HSL	3°, 27%, 57%
HSV	3°, 33%, 69%
XYZ	27.6066, 23.8313, 19.9745
YIQ	136.1030, 33.7430, 10.7270

Conversions

Conversions Part 2

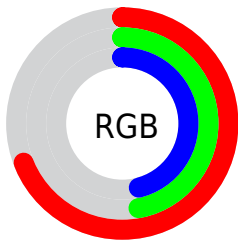
Format	Color
R_{YB}	175, 120, 117
Decimal	11499637
CIE _{Lab}	55.92, 21.13, 10.36
CIE _{LCh}	56, 23.535, 26.107
Yxy	23.8313, 0.3866, 0.3337
Android (android.graphics.Color)	4289689717 (0xFFAF7875)
YUV	136.1030, -9.4178, 34.1127
Hunter-Lab	48.8173, 15.5130, 9.9125

Details

The YUV color **136.1030, -9.4178, 34.1127** is a dark color, and the websafe version is hex **996666**. A complement of this color would be **155.8970, 9.4178, -34.1127**, and the grayscale version is **136.0000, 0.0000, 0.0000**.

A 20% lighter version of the original color is **190.1850, -10.4442, 36.6718**, and **85.7220, -8.2439, 30.9388** is the 20% darker color. If you saturate the color by 10%, you get **124.0720, -12.3605, 44.6639**, and if you desaturate by 10%, it is **148.1340, -6.4751, 23.5615**.

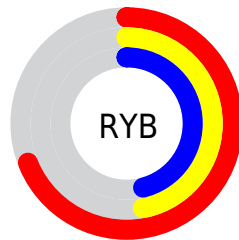
Distribution



Red (69%)

Green (47%)

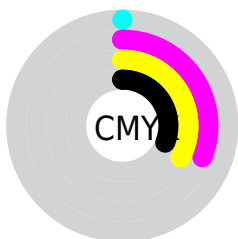
Blue (46%)



Red (69%)

Yellow (47%)

Blue (46%)

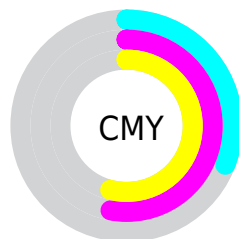


Cyan (0%)

Magenta (31%)

Yellow (33%)

Black (31%)



Cyan (31%)

Magenta (53%)

Yellow (54%)

Brightness & Saturation Gradients

These gradients show how the YUV color 136.1030, -9.4178, 34.1127 changes by changing the brightness by 10 percent. The first figure shows a shift by +10% for each color and the second figure -10%.

Similar to the brightness gradients but the following saturation gradients show a change of the YUV color 136.1030, -9.4178, 34.1127 by changing the saturation by 10% instead.

■ 136.1030, -9.4178,
34.1127

■ 136.1030, -9.4178,
34.1127

255.0000, 0.0000,
0.0000

■ 110.5050, -9.1230,
32.8831

■ 190.1850,
-10.4442, 36.6718

■ 85.7220, -8.2439,
30.9388

■ 215.9890, -9.8546,
34.2126

■ 61.9390, -7.3649,
28.9945

■ 235.6170, -5.7272,
16.9989

■ 39.1560, -6.4859,
27.0502

254.7720, -0.8736,
0.2000

■ 15.8140, -7.7963,
27.3501

■ 2.6910, -1.3267,
5.5330

■ 0.0000, 0.0000,

0.0000

■ 136.1030, -9.4178,
34.1127

■ 136.1030, -9.4178,
34.1127

■ 124.0720,
-12.3605, 44.6639

■ 148.1340, -6.4751,
23.5615

■ 112.7420,
-15.1558, 54.6003

■ 159.4640, -3.6798,
13.6251

■ 100.8250,
-17.6617, 65.0515

■ 171.4950, -0.7370,
3.0739

■ 89.3810, -20.8938,
75.0879

■ 182.8250, 2.0583,
-6.8625

■ 77.4640, -23.3998,
85.5391

■ 194.8560, 5.0010,
-17.4137

■ 65.4330, -26.3425,
96.0903

■ 206.7730, 7.5069,
-27.8649

■ 57.6080, -28.4007,
102.9528

■ 218.2170, 10.7390,
-37.9013

■ 229.9060, 12.3713,
-48.1526

■ 231.0800, 11.7926,
-49.1822

Harmonies

Analogous

The Analogous color harmony consists of three colors that are next to each other on the color wheel.



136.8990, 0.0498, 30.7836



136.1030, -9.4178, 34.1127



134.8220, -16.6742, 28.2201

Triad

The Triadic color harmony groups three colors that are evenly spaced from another and form a triangle on the color wheel.



136.1030, -9.4178, 34.1127



128.2890, -8.5235, -19.5475



131.3510, 21.0260, -23.9868

Complementary

The Complementary color scheme is a pair of colors which are on the opposite of each other on the color wheel.



136.1030, -9.4178, 34.1127



155.8970, 9.4178, -34.1127

Split Complementary

Split-complementary colors differ from the complementary color scheme. The scheme consists of three colors, the original color and two neighbors of the complement color.



126.0130, 20.2066, -41.2304



136.1030, -9.4178, 34.1127



125.1650, 2.8767, -36.1017

Square

The Square scheme is like the rectangle color scheme, but the four colors are evenly spaced on the color wheel.



136.1030, -9.4178, 34.1127



130.9340, -16.7295, -0.8191



123.5580, 13.5289, -46.0934



135.5710, 17.4665, -2.2548

Rectangle

The Rectangle color scheme consists of four colors that form a rectangle on the color wheel.



136.1030, -9.4178, 34.1127



133.4960, -18.9785, 20.6130



123.5580, 13.5289, -46.0934



129.7200, 21.3370, -30.4494

Sweetspot

The Sweet Spot groups the original color and five complimentary colors.



136.1030, -9.4178, 34.1127



211.4640, -3.6798, 13.6251



140.6120, 15.4743, 30.1583



105.7730, -2.3531, 8.0921



242.0000, 0.0000, 0.0000



115.0000, 0.0000, 0.0000

Same Dimension

The Same Dimension uses a secret algorithm to generate beautiful new colors.



136.1030, -9.4178, 34.1127



166.1440, -14.8610, 53.3707



153.1260, -17.8101, 19.1835



80.6910, -1.3267, 5.5330



49.5460, -24.4262, 88.0982



7.4640, -3.6798, 13.6251

Inverse Universe

The Inverse Universe completely reimagines the original color for something new.



155.8970, 9.4178, -34.1127



196.8560, 14.8610, -53.3707



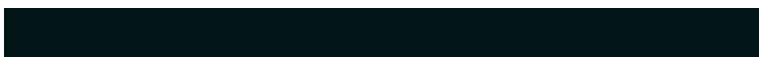
138.8740, 17.8101, -19.1835



83.7220, 1.6161, -5.0182



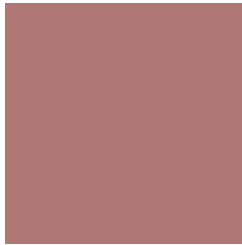
101.0410, 24.1368, -88.6130



15.5360, 3.6798, -13.6251

Previews

White Background



This preview shows how the YUV color 136.1030, -9.4178, 34.1127 looks on a white background.

Color Contrast Check

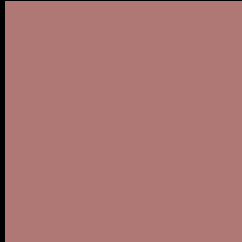
Large Text (above 18pt) WCAG AA ✓ Pass

Any Text WCAG AA × Fail

Large Text (above 18pt) WCAG AAA × Fail

Any Text WCAG AAA × Fail

Black Background



This preview shows how the YUV color 136.1030, -9.4178, 34.1127 looks on a black background.

Color Contrast Check

Large Text (above 18pt) WCAG AA ✓ Pass

Any Text WCAG AA ✓ Pass

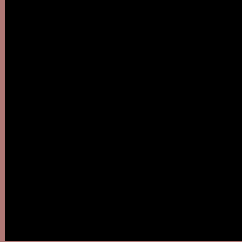
Large Text (above 18pt) WCAG AAA ✓ Pass

Any Text WCAG AAA × Fail

If you want to check with other color combinations, try the [Color Contrast Checker](#).

YUV 136.1030, -9.4178, 34.1127

Background



This preview shows how black text looks on a background with the YUV color 136.1030, -9.4178, 34.1127.



This preview shows how white text looks on a background with the YUV color 136.1030, -9.4178,

Color Blindness Simulation

Color vision deficiency is a very complex topic, and I could not describe the different causes any better than Wikipedia does, so if you want to learn more, you should check out their [article about color blindness](#).

Dichromacy



Original Color

136.1030, -9.4178, 34.1127

Protanopia

134.3550, -5.1050, 4.0737

Deuteranopia

134.8790, -9.8003, 16.7691



Tritanopia

136.3680, -4.6184, 34.7573

Trichromacy



Original Color

136.1030, -9.4178, 34.1127

Protanomaly

134.9650, -6.8847, 14.9397

Deuteranomaly

135.6240, -9.6746, 23.1318

Tritanomaly

136.4990, -6.6550, 34.6424

Monochromacy



Original Color

136.1030, -9.4178, 34.1127

Achromatopsia

136.0000, 0.0000, 0.0000

Achromatomaly

135.8660, -3.3849, 12.3955

CSS Examples

Text

The CSS property to change the color of the text to YUV 136.1030, -9.4178, 34.1127 is called "color". The color property can be set on classes, ids or directly on the HTML element.

This example shows how text in the color `rgb(175, 120, 117)` looks like.

```
.text, #text, p{  
    color:rgb(175, 120, 117)  
}
```

If you want to add a text shadow in that color use the text-shadow property, you can generate a text shadow directly with our [CSS Text Shadow Generator](#).

Here you see how black text with a 4 pixel rgb(175, 120, 117) colored shadow looks like.

```
.shadow{ text-shadow: 4px 4px 2px rgb(175, 120, 117) }
```

Border

The CSS property to change the border of an element to YUV 136.1030, -9.4178, 34.1127 is called "border". The border property can be set on classes, ids or directly on the HTML element.

This example shows the color as border, it can be applied via the CSS property "border" or "border-color".

```
.border, #border, table{ border:4px solid rgb(175, 120, 117) }
```


If only the border color should be changed use the property `border-color`.

```
.border{ border-color:rgb(175, 120, 117) }
```

If you want to add a box shadow in that color use:

Here you see how a box with a 4 pixel `rgb(175, 120, 117)` colored shadow looks like.

```
.boxshadow{ -moz-box-shadow:4px 4px 4px  
4px rgb(175, 120, 117); -webkit-box-  
shadow:4px 4px 4px 4px rgb(175, 120, 117);  
box-shadow:4px 4px 4px 4px rgb(175, 120,  
117) }
```

Background

The CSS property to change the background color of an element to YUV 136.1030, -9.4178, 34.1127 is called "background". The background property can be set on classes, ids or directly on the HTML element.

```
.background, #background, body{  
background: rgb(175, 120, 117) }
```

If only the background color should be changed can be used:

```
.background{ background-color: rgb(175,  
120, 117) }
```

This example shows the color as background, it is applied via the CSS property "background".

To optimize and compress your CSS code, you can use our [online CSS compressor and optimizer](#) based on csstidy. If you want to create a linear or radial gradient as background or border, check our [CSS Gradient Generator](#).

Hey! You found this booklet interesting? Support Converting Colors with the new Membership Option!

The pro membership hides all ads, plus gives you double the colors in the color bucket, and more awesome pro features!

[Learn more, Memberships starting at \\$2.50/m!](#)

**Follow me
on Twitter!**

@ConvertingColor