

Converting Colors

YUV(136.1350, -11.4056,
18.2986)

Have a look what the booklet for
YUV(136.1350, -11.4056, 18.2986)
contains.

YUV(136.1350, -11.4056, 18.2986)	3
<i>Conversions</i>	4
<i>Details</i>	6
<i>Harmonies</i>	12
<i>Previews</i>	24
<i>Color Blindness Simulation</i>	28
<i>CSS Examples</i>	31

Color

**YUV(136.1350, -11.4056,
18.2986)**

Conversions

Conversions Part 1

Format	Color
Hex	9D8271
RGB	157, 130, 113
RGB Percent	62%, 51%, 44%
CMY	0.3843, 0.4902, 0.5569
CMYK	0.00, 0.17, 0.28, 0.38
HSL	23°, 18%, 53%
HSV	23°, 28%, 62%
XYZ	24.8679, 24.3256, 19.0074
YIQ	136.1350, 21.5490, 0.4370

Conversions

Conversions Part 2

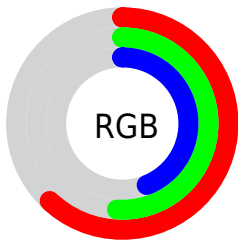
Format	Color
R_{YB}	157, 141, 113
Decimal	10322545
CIE Lab	56.41, 7.67, 13.07
CIE LCh	56, 15.157, 59.592
Yxy	24.3256, 0.3646, 0.3567
Android (android.graphics.Color)	4288512625 (0xFF9D8271)
YUV	136.1350, -11.4056, 18.2986
Hunter-Lab	49.3210, 3.6888, 11.6754

Details

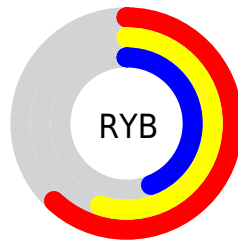
The YUV color $136.1350, -11.4056, 18.2986$ is a dark color, and the websafe version is hex 996666 . A complement of this color would be $133.8650, 11.4056, -18.2986$, and the grayscale version is $136.0000, 0.0000, 0.0000$.

A 20% lighter version of the original color is $189.6190, -12.1372, 19.6281$, and $86.3520, -10.5265, 16.3543$ is the 20% darker color. If you saturate the color by 10%, you get $128.4410, -15.5004, 25.0462$, and if you desaturate by 10%, it is $143.8290, -7.3107, 11.5510$.

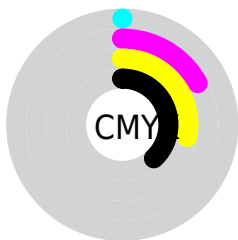
Distribution



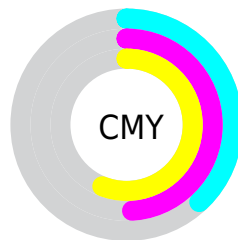
- Red (62%)
- Green (51%)
- Blue (44%)



- Red (62%)
- Yellow (55%)
- Blue (44%)



- Cyan (0%)
- Magenta (17%)
- Yellow (28%)
- Black (38%)



- Cyan (38%)
- Magenta (49%)
- Yellow (56%)

Brightness & Saturation Gradients

These gradients show how the YUV color 136.1350, -11.4056, 18.2986 changes by changing the brightness by 10 percent. The first figure shows a shift by +10% for each color and the second figure -10%.

Similar to the brightness gradients but the following saturation gradients show a change of the YUV color 136.1350, -11.4056, 18.2986 by changing the saturation by 10% instead.

■ 136.1350,
-11.4056, 18.2986

■ 136.1350,
-11.4056, 18.2986

■ 255.0000, 0.0000,
0.0000

■ 110.9500,
-10.8214, 17.5838

■ 189.6190,
-12.1372, 19.6281

■ 86.3520, -10.5265,
16.3543

■ 217.8040,
-12.7214, 20.3429

■ 62.8680, -9.7949,
15.0248

■ 241.6180,
-10.6577, 11.7360

■ 40.3840, -9.0633,
13.6952

■ 254.2020, -3.0576,
0.6998

■ 19.2700, -9.5001,
13.7952

■ 0.0000, 0.0000,
0.0000

■ 136.1350,
-11.4056, 18.2986

■ 136.1350,
-11.4056, 18.2986

■ 128.4410,
-15.5004, 25.0462

■ 143.8290, -7.3107,
11.5510

■ 121.4480,
-19.4479, 31.1791

■ 150.8220, -3.3632,
5.4181

■ 113.7540,
-23.5427, 37.9267

■ 158.5160, 0.7316,
-1.3295

■ 106.0600,
-27.6376, 44.6744

■ 166.2100, 4.8265,
-8.0772

■ 98.9530, -32.0218,
50.9072

■ 173.3170, 9.2107,
-14.3100

■ 91.3730, -35.6799,
57.5549

■ 180.8970, 12.8688,
-20.9577

■ 84.2660, -40.0641,
63.7877

■ 188.0040, 17.2530,
-27.1905

■ 82.7500, -40.7957,

■ 195.6980, 21.3479,

65.1172

-33.9381

■ 203.2780, 25.0059,
-40.5858

Harmonies

Analogous

The Analogous color harmony consists of three colors that are next to each other on the color wheel.



137.3080, -7.0538, 22.5319



136.1350, -11.4056, 18.2986



134.7380, -12.6888, 9.8768

Triad

The Triadic color harmony groups three colors that are evenly spaced from another and form a triangle on the color wheel.



136.1350, -11.4056, 18.2986



130.4270, 2.2545, -23.1765



136.4590, 10.6197, 0.4745

Complementary

The Complementary color scheme is a pair of colors which are on the opposite of each other on the color wheel.



136.1350, -11.4056, 18.2986



133.8650, 11.4056, -18.2986

Split Complementary

Split-complementary colors differ from the complementary color scheme. The scheme consists of three colors, the original color and two neighbors of the complement color.



134.0660, 13.2785, -12.3359



136.1350, -11.4056, 18.2986



130.1260, 8.8119, -26.4205

Square

The Square scheme is like the rectangle color scheme, but the four colors are evenly spaced on the color wheel.



136.1350, -11.4056, 18.2986



131.3590, -4.6140, -13.4698



131.8860, 12.8742, -22.7020



137.5700, 5.6350, 12.6551

Rectangle

The Rectangle color scheme consists of four colors that form a rectangle on the color wheel.



136.1350, -11.4056, 18.2986



133.6230, -11.6461, 2.0846



131.8860, 12.8742, -22.7020



135.7790, 11.9410, -3.3142

Sweetspot

The Sweet Spot groups the original color and five complimentary colors.



136.1350, -11.4056, 18.2986



196.3060, -4.0949, 6.7476



129.2340, 5.3076, 24.3508



97.3380, -2.6316, 4.0886



230.0000, 0.0000, 0.0000



102.0000, 0.0000, 0.0000

Same Dimension

The Same Dimension uses a secret algorithm to generate beautiful new colors.



136.1350, -11.4056, 18.2986



170.8930, -17.6952, 29.0348



149.0490, -17.7722, 6.9730



75.1530, -2.0474, 3.3738



75.0420, -36.9957, 59.5992



8.0070, -3.9475, 6.1329

Inverse Universe

The Inverse Universe completely reimagines the original color for something new.



133.8650, 11.4056, -18.2986



167.5200, 17.9846, -28.5200



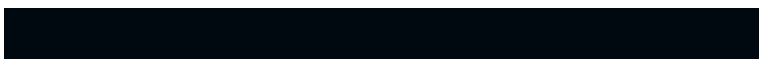
120.9510, 17.7722, -6.9730



74.8470, 2.0474, -3.3738



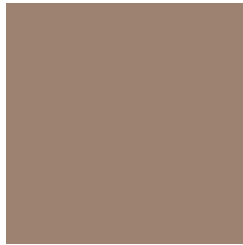
67.9580, 36.9957, -59.5992



6.9930, 3.9475, -6.1329

Previews

White Background



This preview shows how the YUV color 136.1350, -11.4056, 18.2986 looks on a white background.

Color Contrast Check

Large Text (above 18pt) WCAG AA ✓ Pass

Any Text WCAG AA × Fail

Large Text (above 18pt) WCAG AAA × Fail

Any Text WCAG AAA × Fail

Black Background



This preview shows how the YUV color 136.1350, -11.4056, 18.2986 looks on a black background.

Color Contrast Check

Large Text (above 18pt) WCAG AA ✓ Pass

Any Text WCAG AA ✓ Pass

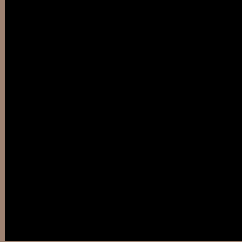
Large Text (above 18pt) WCAG AAA ✓ Pass

Any Text WCAG AAA × Fail

If you want to check with other color combinations, try the [Color Contrast Checker](#).

YUV 136.1350, -11.4056, 18.2986

Background



This preview shows how black text looks on a background with the YUV color 136.1350, -11.4056, 18.2986.



This preview shows how white text looks on a background with the YUV color 136.1350, -11.4056, 18.2986.

Color Blindness Simulation

Color vision deficiency is a very complex topic, and I could not describe the different causes any better than Wikipedia does, so if you want to learn more, you should check out their [article about color blindness](#).

Dichromacy



Original Color

136.1350, -11.4056, 18.2986

Protanopia

134.9270, -9.3310, 6.2030

Deuteranopia

135.8360, -11.2581, 17.6838



Tritanopia

137.8930, -0.9332, 19.3878

Trichromacy



Original Color

136.1350, -11.4056, 18.2986

Protanomaly

135.1340, -9.9261, 10.4065

Deuteranomaly

135.8360, -11.2581, 17.6838

Tritanomaly

137.2690, -4.5696, 19.0581

Monochromacy



Original Color

136.1350, -11.4056, 18.2986

Achromatopsia

136.0000, 0.0000, 0.0000

Achromatomaly

136.3060, -4.0949, 6.7476

CSS Examples

Text

The CSS property to change the color of the text to YUV 136.1350, -11.4056, 18.2986 is called "color". The color property can be set on classes, ids or directly on the HTML element.

This example shows how text in the color `rgb(157, 130, 113)` looks like.

```
.text, #text, p{  
    color:rgb(157, 130, 113)  
}
```

If you want to add a text shadow in that color use the text-shadow property, you can generate a text shadow directly with our [CSS Text Shadow Generator](#).

Here you see how black text with a 4 pixel rgb(157, 130, 113) colored shadow looks like.

```
.shadow{ text-shadow: 4px 4px 2px rgb(157, 130, 113) }
```

Border

The CSS property to change the border of an element to YUV 136.1350, -11.4056, 18.2986 is called "border".

The border property can be set on classes, ids or directly on the HTML element.

This example shows the color as border, it can be applied via the CSS property "border" or "border-color".

```
.border, #border, table{ border:4px solid rgb(157, 130, 113) }
```


If only the border color should be changed use the property `border-color`.

```
.border{ border-color:rgb(157, 130, 113) }
```

If you want to add a box shadow in that color use:

Here you see how a box with a 4 pixel `rgb(157, 130, 113)` colored shadow looks like.

```
.boxshadow{ -moz-box-shadow:4px 4px 4px  
4px rgb(157, 130, 113); -webkit-box-  
shadow:4px 4px 4px 4px rgb(157, 130, 113);  
box-shadow:4px 4px 4px 4px rgb(157, 130,  
113) }
```

Background

The CSS property to change the background color of an element to YUV 136.1350, -11.4056, 18.2986 is called "background". The background property can be set on classes, ids or directly on the HTML element.

```
.background, #background, body{  
background: rgb(157, 130, 113) }
```

If only the background color should be changed can be used:

```
.background{ background-color: rgb(157,  
130, 113) }
```

This example shows the color as background, it is applied via the CSS property "background".

To optimize and compress your CSS code, you can use our [online CSS compressor and optimizer](#) based on csstidy. If you want to create a linear or radial gradient as background or border, check our [CSS Gradient Generator](#).

Hey! You found this booklet interesting? Support Converting Colors with the new Membership Option!

The pro membership hides all ads, plus gives you double the colors in the color bucket, and more awesome pro features!

[Learn more, Memberships starting at \\$2.50/m!](#)

**Follow me
on Twitter!**

@ConvertingColor