

Converting Colors

YUV(136.2000, 3.8454, 73.4926)

Have a look what the booklet for
YUV(136.2000, 3.8454, 73.4926)
contains.

YUV(136.2000, 3.8454, 73.4926)	3
<i>Conversions</i>	4
<i>Details</i>	6
<i>Harmonies</i>	12
<i>Previews</i>	24
<i>Color Blindness Simulation</i>	28
<i>CSS Examples</i>	31

Color

**YUV(136.2000, 3.8454,
73.4926)**

Conversions

Conversions Part 1

Format	Color
Hex	DC5C90
RGB	220, 92, 144
RGB Percent	86%, 36%, 56%
CMY	0.1373, 0.6392, 0.4353
CMYK	0.00, 0.58, 0.35, 0.14
HSL	336°, 65%, 61%
HSV	336°, 58%, 86%
XYZ	38.3764, 24.8836, 29.1659
YIQ	136.2000, 59.5960, 43.3080

Conversions

Conversions Part 2

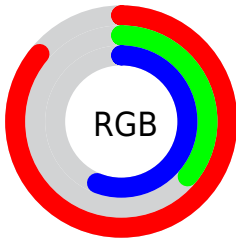
Format	Color
R _Y B	220, 92, 144
Decimal	14441616
CIE Lab	56.96, 55.06, -3.13
CIE LCh	57, 55.153, 356.748
Yxy	24.8836, 0.4152, 0.2692
Android (android.graphics.Color)	4292631696 (0xFFDC5C90)
YUV	136.2000, 3.8454, 73.4926
Hunter-Lab	49.8834, 50.0279, 0.2526

Details

The YUV color **136.2000, 3.8454, 73.4926** is a light color, and the websafe version is hex **CC6699**. The color can be described as light muted rose. A complement of this color would be **175.8000, -3.8454, -73.4926**, and the grayscale version is **136.0000, 0.0000, 0.0000**.

A 20% lighter version of the original color is **185.1060, 6.3567, 61.2970**, and **78.8130, 7.4872, 72.0780** is the 20% darker color. If you saturate the color by 10%, you get **121.8040, 4.5336, 86.1179**, and if you desaturate by 10%, it is **150.5960, 3.1572, 60.8673**.

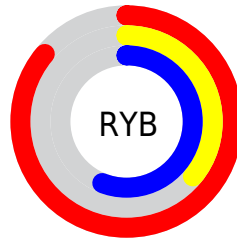
Distribution



Red (86%)

Green (36%)

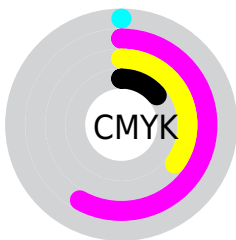
Blue (56%)



Red (86%)

Yellow (36%)

Blue (56%)

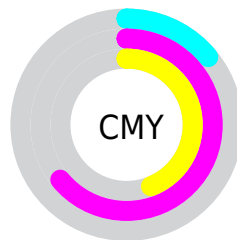


Cyan (0%)

Magenta (58%)

Yellow (35%)

Black (14%)



Cyan (14%)

Magenta (64%)

Yellow (44%)

Brightness & Saturation Gradients

These gradients show how the YUV color 136.2000, 3.8454, 73.4926 changes by changing the brightness by 10 percent. The first figure shows a shift by +10% for each color and the second figure -10%.

Similar to the brightness gradients but the following saturation gradients show a change of the YUV color 136.2000, 3.8454, 73.4926 by changing the saturation by 10% instead.

136.2000, 3.8454,
73.4926

136.2000, 3.8454,
73.4926

255.0000, 0.0000,
0.0000

107.8300, 5.0138,
72.0631

185.1060, 6.3567,
61.2970

78.8130, 7.4872,
72.0780

204.7340, 10.4841,
44.0833

47.4480, 11.1181,
74.1521

224.9490, 14.3221,
26.3547

36.5680, 5.6360,
59.1379

242.0860, 6.3666,
11.3256

25.8020, 0.5906,
44.0236

15.4770, -6.6442,
31.1537

0.0000, 0.0000,

0.0000

■ 136.2000, 3.8454,
73.4926

■ 136.2000, 3.8454,
73.4926

■ 121.8040, 4.5336,
86.1179

■ 150.5960, 3.1572,
60.8673

■ 107.4080, 5.2219,
98.7432

■ 164.9920, 2.4689,
48.2420

■ 93.0120, 5.9101,
111.3685

■ 179.3880, 1.7807,
35.6167

■ 78.6160, 6.5983,
123.9938

■ 193.7840, 1.0925,
22.9914

■ 75.9260, 6.4455,
126.3529

■ 208.1800, 0.4043,
10.3661

■ 222.5760, -0.2840,
-2.2592

■ 236.9720, -0.9722,
-14.8844

■ 243.8510, 2.5385,
-20.9173

■ 244.5350, 5.1592,
-21.5172

Harmonies

Analogous

The Analogous color harmony consists of three colors that are next to each other on the color wheel.



140.6920, 24.3088, 43.2431



136.2000, 3.8454, 73.4926



133.6740, -18.5733, 77.4619

Triad

The Triadic color harmony groups three colors that are evenly spaced from another and form a triangle on the color wheel.



136.2000, 3.8454, 73.4926



126.7720, -41.2996, -6.8160



115.6090, 49.4928, -101.3891

Complementary

The Complementary color scheme is a pair of colors which are on the opposite of each other on the color wheel.



136.2000, 3.8454, 73.4926



175.8000, -3.8454, -73.4926

Split Complementary

Split-complementary colors differ from the complementary color scheme. The scheme consists of three colors, the original color and two neighbors of the complement color.



113.7390, 32.1737, -99.7491



136.2000, 3.8454, 73.4926



115.7670, -17.1401, -55.9237

Square

The Square scheme is like the rectangle color scheme, but the four colors are evenly spaced on the color wheel.



136.2000, 3.8454, 73.4926



131.2390, -49.4178, 30.4854



108.1530, 10.7706, -94.8502



111.0900, 60.1016, -97.4259

Rectangle

The Rectangle color scheme consists of four colors that form a rectangle on the color wheel.



136.2000, 3.8454, 73.4926



133.6500, -32.3655, 67.8359



108.1530, 10.7706, -94.8502



115.6430, 44.5460, -101.4189

Sweetspot

The Sweet Spot groups the original color and five complimentary colors.



136.2000, 3.8454, 73.4926



226.7950, 1.0871, 24.7358



129.0170, 44.8546, 33.3111



110.9140, 0.5354, 14.9844



0.0000, 0.0000, 0.0000



128.0000, 0.0000, 0.0000

Same Dimension

The Same Dimension uses a secret algorithm to generate beautiful new colors.



136.2000, 3.8454, 73.4926



138.4300, 5.2110, 102.2319



136.7290, -22.0514, 73.0287



102.7450, 0.1257, 6.3626



59.7070, 5.0744, 99.3580



15.9200, 1.5184, 26.3802

Inverse Universe

The Inverse Universe completely reimagines the original color for something new.



136.2000, 3.8454, 73.4926



138.4300, 5.2110, 102.2319



175.2710, 22.0514, -73.0287



102.7450, 0.1257, 6.3626



59.7070, 5.0744, 99.3580



15.9200, 1.5184, 26.3802

Previews

White Background



This preview shows how the YUV color 136.2000, 3.8454, 73.4926 looks on a white background.

Color Contrast Check

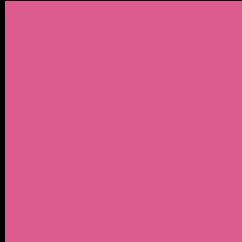
Large Text (above 18pt) WCAG AA ✓ Pass

Any Text WCAG AA ✗ Fail

Large Text (above 18pt) WCAG AAA ✗ Fail

Any Text WCAG AAA ✗ Fail

Black Background



This preview shows how the YUV color 136.2000, 3.8454, 73.4926 looks on a black background.

Color Contrast Check

Large Text (above 18pt) WCAG AA ✓ Pass

Any Text WCAG AA ✓ Pass

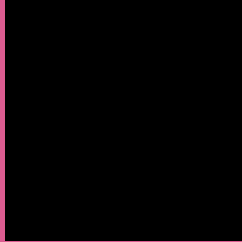
Large Text (above 18pt) WCAG AAA ✓ Pass

Any Text WCAG AAA × Fail

If you want to check with other color combinations, try the [Color Contrast Checker](#).

YUV 136.2000, 3.8454, 73.4926

Background



This preview shows how black text looks on a background with the YUV color 136.2000, 3.8454, 73.4926.



This preview shows how white text looks on a background with the YUV color 136.2000, 3.8454,

73.4926.

Color Blindness Simulation

Color vision deficiency is a very complex topic, and I could not describe the different causes any better than Wikipedia does, so if you want to learn more, you should check out their [article about color blindness](#).

Dichromacy



Original Color

136.2000, 3.8454, 73.4926

Protanopia

137.7120, 16.9040, -8.5174

Deuteranopia

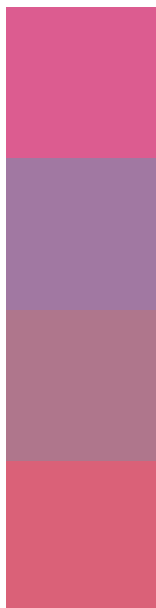
138.6530, -0.3219, 9.9513



Tritanopia

135.7810, -14.1890, 71.2291

Trichromacy



Original Color

136.2000, 3.8454, 73.4926

Protanomaly

137.0470, 12.3018, 21.0068

Deuteranomaly

137.5510, 1.2074, 32.8428

Tritanomaly

135.8010, -7.7899, 72.0885

Monochromacy



Original Color

136.2000, 3.8454, 73.4926

Achromatopsia

136.0000, 0.0000, 0.0000

Achromatomaly

136.2190, 1.3710, 26.9949

CSS Examples

Text

The CSS property to change the color of the text to YUV 136.2000, 3.8454, 73.4926 is called "color". The color property can be set on classes, ids or directly on the HTML element.

This example shows how text in the color `rgb(220, 92, 144)` looks like.

```
.text, #text, p{  
    color:rgb(220, 92, 144)  
}
```

If you want to add a text shadow in that color use the text-shadow property, you can generate a text shadow directly with our [CSS Text Shadow Generator](#).

Here you see how black text with a 4 pixel rgb(220, 92, 144) colored shadow looks like.

```
.shadow{ text-shadow: 4px 4px 2px rgb(220, 92, 144) }
```

Border

The CSS property to change the border of an element to YUV 136.2000, 3.8454, 73.4926 is called "border". The border property can be set on classes, ids or directly on the HTML element.

This example shows the color as border, it can be applied via the CSS property "border" or "border-color".

```
.border, #border, table{ border:4px solid rgb(220, 92, 144) }
```


If only the border color should be changed use the property border-color.

```
.border{ border-color:rgb(220, 92, 144) }
```

If you want to add a box shadow in that color use:

Here you see how a box with a 4 pixel rgb(220, 92, 144) colored shadow looks like.

```
.boxshadow{ -moz-box-shadow:4px 4px 4px  
4px rgb(220, 92, 144); -webkit-box-  
shadow:4px 4px 4px 4px rgb(220, 92, 144);  
box-shadow:4px 4px 4px 4px rgb(220, 92,  
144) }
```

Background

The CSS property to change the background color of an element to YUV 136.2000, 3.8454, 73.4926 is called "background". The background property can be set on classes, ids or directly on the HTML element.

```
.background, #background, body{  
background: rgb(220, 92, 144) }
```

If only the background color should be changed can be used:

```
.background{ background-color: rgb(220, 92,  
144) }
```

This example shows the color as background, it is applied via the CSS property "background".

To optimize and compress your CSS code, you can use our [online CSS compressor and optimizer](#) based on csstidy. If you want to create a linear or radial gradient as background or border, check our [CSS Gradient Generator](#).

Hey! You found this booklet interesting? Support Converting Colors with the new Membership Option!

The pro membership hides all ads, plus gives you double the colors in the color bucket, and more awesome pro features!

[Learn more, Memberships starting at \\$2.50/m!](#)

**Follow me
on Twitter!**

@ConvertingColor