

Converting Colors

YUV(136.2090, -20.3160,
29.6347)

Have a look what the booklet for
YUV(136.2090, -20.3160, 29.6347)
contains.

YUV(136.2090, -20.3160, 29.6347)	3
<i>Conversions</i>	4
<i>Details</i>	6
<i>Harmonies</i>	12
<i>Previews</i>	24
<i>Color Blindness Simulation</i>	28
<i>CSS Examples</i>	31

Color

**YUV(136.2090, -20.3160,
29.6347)**

Conversions

Conversions Part 1

Format	Color
Hex	AA7F5F
RGB	170, 127, 95
RGB Percent	67%, 50%, 37%
CMY	0.3333, 0.5020, 0.6275
CMYK	0.00, 0.25, 0.44, 0.33
HSL	26°, 31%, 52%
HSV	26°, 44%, 67%
XYZ	26.2325, 24.5510, 14.1827
YIQ	136.2090, 35.9000, -0.8360

Conversions

Conversions Part 2

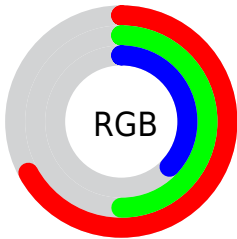
Format	Color
RYB	170, 151, 95
Decimal	11173727
CIELab	56.64, 12.46, 23.85
CIELCh	57, 26.908, 62.424
Yxy	24.5510, 0.4038, 0.3779
Android (android.graphics.Color)	4289363807 (0xFFAA7F5F)
YUV	136.2090, -20.3160, 29.6347
Hunter-Lab	49.5490, 7.7917, 17.7134

Details

The YUV color **136.2090, -20.3160, 29.6347** is a dark color, and the websafe version is hex **CC9966**. A complement of this color would be **128.7910, 20.3160, -29.6347**, and the grayscale version is **136.0000, 0.0000, 0.0000**.

A 20% lighter version of the original color is **190.1770, -21.7793, 32.2938**, and **85.9420, -18.7054, 26.3609** is the 20% darker color. If you saturate the color by 10%, you get **128.4010, -24.8477, 36.4823**, and if you desaturate by 10%, it is **144.0170, -15.7844, 22.7871**.

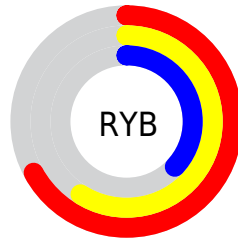
Distribution



Red (67%)

Green (50%)

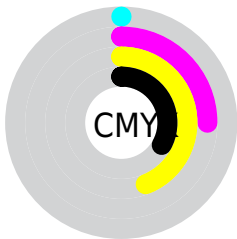
Blue (37%)



Red (67%)

Yellow (59%)

Blue (37%)

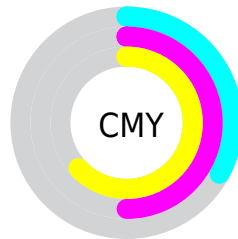


Cyan (0%)

Magenta (25%)

Yellow (44%)

Black (33%)



Cyan (33%)

Magenta (50%)

Yellow (63%)

Brightness & Saturation Gradients

These gradients show how the YUV color 136.2090, -20.3160, 29.6347 changes by changing the brightness by 10 percent. The first figure shows a shift by +10% for each color and the second figure -10%.

Similar to the brightness gradients but the following saturation gradients show a change of the YUV color 136.2090, -20.3160, 29.6347 by changing the saturation by 10% instead.

■ 136.2090,
-20.3160, 29.6347

■ 136.2090,
-20.3160, 29.6347

■ 255.0000, 0.0000,
0.0000

■ 110.7250,
-19.5844, 28.3052

■ 190.1770,
-21.7793, 32.2938

■ 85.9420, -18.7054,
26.3609

■ 217.3620,
-22.3635, 33.0085

■ 62.2730, -17.3896,
24.3166

■ 237.5770,
-18.5255, 15.2800

■ 39.0340, -18.2578,
22.7722

■ 251.9220,
-11.7935, 2.6994

■ 19.5910, -9.6584,
17.8987

■ 0.0000, 0.0000,
0.0000

■ 136.2090,
-20.3160, 29.6347

■ 136.2090,
-20.3160, 29.6347

■ 128.4010,
-24.8477, 36.4823

■ 144.0170,
-15.7844, 22.7871

■ 121.1800,
-29.6687, 42.8151

■ 151.2380,
-10.9633, 16.4543

■ 113.3720,
-34.2004, 49.6628

■ 159.0460, -6.4317,
9.6067

■ 105.5640,
-38.7321, 56.5104

■ 166.8540, -1.9000,
2.7590

■ 97.7560, -43.2637,
63.3580

■ 174.6620, 2.6316,
-4.0886

■ 93.6810, -46.1847,
66.9318

■ 181.8830, 7.4527,
-10.4214

■ 189.6910, 11.9843,
-17.2690

■ 197.4990, 16.5160,

-24.1166

■ 205.3070, 21.0476,
-30.9642

Harmonies

Analogous

The Analogous color harmony consists of three colors that are next to each other on the color wheel.



137.3270, -12.4862, 38.3012



136.2090, -20.3160, 29.6347



134.2410, -22.3038, 13.8206

Triad

The Triadic color harmony groups three colors that are evenly spaced from another and form a triangle on the color wheel.



136.2090, -20.3160, 29.6347



124.3100, 6.2562, -46.7529



138.1310, 18.1764, 3.3931

Complementary

The Complementary color scheme is a pair of colors which are on the opposite of each other on the color wheel.



136.2090, -20.3160, 29.6347



128.7910, 20.3160, -29.6347

Split Complementary

Split-complementary colors differ from the complementary color scheme. The scheme consists of three colors, the original color and two neighbors of the complement color.



133.1600, 24.0781, -22.9423



136.2090, -20.3160, 29.6347



122.1590, 18.6556, -57.1444

Square

The Square scheme is like the rectangle color scheme, but the four colors are evenly spaced on the color wheel.



136.2090, -20.3160, 29.6347



128.4730, -7.6282, -26.7248



126.5330, 24.8802, -46.9484



139.5590, 9.0914, 24.0658

Rectangle

The Rectangle color scheme consists of four colors that form a rectangle on the color wheel.



136.2090, -20.3160, 29.6347



132.7340, -20.0819, 1.1103



126.5330, 24.8802, -46.9484



137.0590, 20.6769, -5.3137

Sweetspot

The Sweet Spot groups the original color and five complimentary colors.



136.2090, -20.3160, 29.6347



208.7150, -7.7475, 11.6509



122.4410, 8.1636, 41.7092



104.0780, -4.9685, 6.9476



240.0000, 0.0000, 0.0000



112.0000, 0.0000, 0.0000

Same Dimension

The Same Dimension uses a secret algorithm to generate beautiful new colors.



136.2090, -20.3160, 29.6347



168.6320, -31.8636, 46.8037



157.9280, -31.0235, 10.5871



80.1530, -2.0474, 3.3738



81.2330, -40.0479, 58.5547



11.2630, -5.5527, 7.6623

Inverse Universe

The Inverse Universe completely reimagines the original color for something new.



128.7910, 20.3160, -29.6347



157.3680, 31.8636, -46.8037



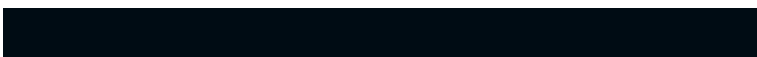
107.0720, 31.0235, -10.5871



79.8470, 2.0474, -3.3738



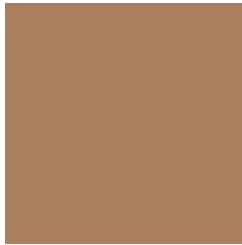
66.7670, 40.0479, -58.5547



9.3240, 5.2633, -8.1771

Previews

White Background



This preview shows how the YUV color 136.2090, -20.3160, 29.6347 looks on a white background.

Color Contrast Check

Large Text (above 18pt) WCAG AA ✓ Pass

Any Text WCAG AA × Fail

Large Text (above 18pt) WCAG AAA × Fail

Any Text WCAG AAA × Fail

Black Background



This preview shows how the YUV color 136.2090, -20.3160, 29.6347 looks on a black background.

Color Contrast Check

Large Text (above 18pt) WCAG AA ✓ Pass

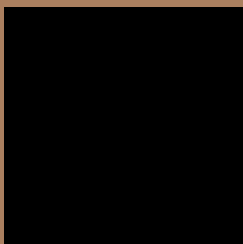
Any Text WCAG AA ✓ Pass

Large Text (above 18pt) WCAG AAA ✓ Pass

Any Text WCAG AAA × Fail

If you want to check with other color combinations, try the [Color Contrast Checker](#).

YUV 136.2090, -20.3160, 29.6347 Background



This preview shows how black text looks on a background with the YUV color 136.2090, -20.3160, 29.6347.



This preview shows how white text looks on a background with the YUV color 136.2090, -20.3160,

Color Blindness Simulation

Color vision deficiency is a very complex topic, and I could not describe the different causes any better than Wikipedia does, so if you want to learn more, you should check out their [article about color blindness](#).

Dichromacy



Original Color

136.2090, -20.3160, 29.6347

Protanopia

134.7720, -17.6356, 9.8470

Deuteranopia

135.4640, -20.4418, 23.2721



Tritanopia

138.2750, -3.5866, 30.4538

Trichromacy



Original Color

136.2090, -20.3160, 29.6347

Protanomaly

135.5880, -18.5309, 17.0243

Deuteranomaly

135.7740, -20.5946, 25.6312

Tritanomaly

137.6680, -9.6963, 30.1092

Monochromacy



Original Color

136.2090, -20.3160, 29.6347

Achromatopsia

136.0000, 0.0000, 0.0000

Achromatomaly

136.1170, -7.4527, 10.4214

CSS Examples

Text

The CSS property to change the color of the text to YUV 136.2090, -20.3160, 29.6347 is called "color". The color property can be set on classes, ids or directly on the HTML element.

This example shows how text in the color `rgb(170, 127, 95)` looks like.

```
.text, #text, p{  
    color:rgb(170, 127, 95)  
}
```

If you want to add a text shadow in that color use the text-shadow property, you can generate a text shadow directly with our [CSS Text Shadow Generator](#).

Here you see how black text with a 4 pixel rgb(170, 127, 95) colored shadow looks like.

```
.shadow{ text-shadow: 4px 4px 2px rgb(170, 127, 95) }
```

Border

The CSS property to change the border of an element to YUV 136.2090, -20.3160, 29.6347 is called "border".

The border property can be set on classes, ids or directly on the HTML element.

This example shows the color as border, it can be applied via the CSS property "border" or "border-color".

```
.border, #border, table{ border:4px solid rgb(170, 127, 95) }
```


If only the border color should be changed use the property `border-color`.

```
.border{ border-color:rgb(170, 127, 95) }
```

If you want to add a box shadow in that color use:

Here you see how a box with a 4 pixel `rgb(170, 127, 95)` colored shadow looks like.

```
.boxshadow{ -moz-box-shadow:4px 4px 4px  
4px rgb(170, 127, 95); -webkit-box-  
shadow:4px 4px 4px 4px rgb(170, 127, 95);  
box-shadow:4px 4px 4px 4px rgb(170, 127,  
95) }
```

Background

The CSS property to change the background color of an element to YUV 136.2090, -20.3160, 29.6347 is called "background". The background property can be set on classes, ids or directly on the HTML element.

```
.background, #background, body{  
background: rgb(170, 127, 95) }
```

If only the background color should be changed can be used:

```
.background{ background-color: rgb(170,  
127, 95) }
```

This example shows the color as background, it is applied via the CSS property "background".

To optimize and compress your CSS code, you can use our [online CSS compressor and optimizer](#) based on csstidy. If you want to create a linear or radial gradient as background or border, check our [CSS Gradient Generator](#).

Hey! You found this booklet interesting? Support Converting Colors with the new Membership Option!

The pro membership hides all ads, plus gives you double the colors in the color bucket, and more awesome pro features!

[Learn more, Memberships starting at \\$2.50/m!](#)

**Follow me
on Twitter!**

@ConvertingColor