

Converting Colors

YUV(136.2110, 7.2910, 88.3920)

Have a look what the booklet for
YUV(136.2110, 7.2910, 88.3920)
contains.

YUV(136.2110, 7.2910, 88.3920)	3
<i>Conversions</i>	4
<i>Details</i>	6
<i>Harmonies</i>	12
<i>Previews</i>	24
<i>Color Blindness Simulation</i>	28
<i>CSS Examples</i>	31

Color

**YUV(136.2110, 7.2910,
88.3920)**

Conversions

Conversions Part 1

Format	Color
Hex	ED5297
RGB	237, 82, 151
RGB Percent	93%, 32%, 59%
CMY	0.0706, 0.6784, 0.4078
CMYK	0.00, 0.65, 0.36, 0.07
HSL	333°, 81%, 63%
HSV	333°, 65%, 93%
XYZ	43.5283, 26.2735, 32.0553
YIQ	136.2110, 70.2310, 54.3190

Conversions

Conversions Part 2

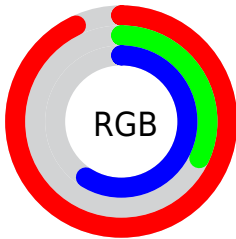
Format	Color
R _Y B	237, 82, 151
Decimal	15553175
CIE Lab	58.30, 65.16, -4.95
CIE LCh	58, 65.350, 355.654
Yxy	26.2735, 0.4273, 0.2579
Android (android.graphics.Color)	4293743255 (0xFFED5297)
YUV	136.2110, 7.2910, 88.3920
Hunter-Lab	51.2577, 61.8822, -1.1981

Details

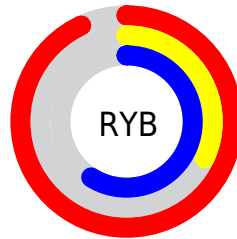
The YUV color **136.2110, 7.2910, 88.3920** is a light color, and the websafe version is hex **FF6699**. The color can be described as light muted rose. A complement of this color would be **182.7890, -7.2910, -88.3920**, and the grayscale version is **136.0000, 0.0000, 0.0000**.

A 20% lighter version of the original color is **181.7950, 11.4401, 64.2008**, and **64.9100, 17.2994, 98.3029** is the 20% darker color. If you saturate the color by 10%, you get **120.6410, 8.5580, 102.0468**, and if you desaturate by 10%, it is **151.7810, 6.0240, 74.7371**.

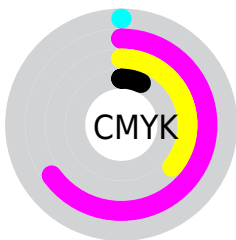
Distribution



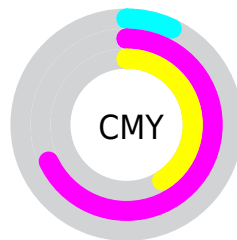
- Red (93%)
- Green (32%)
- Blue (59%)



- Red (93%)
- Yellow (32%)
- Blue (59%)



- Cyan (0%)
- Magenta (65%)
- Yellow (36%)
- Black (7%)



- Cyan (7%)
- Magenta (68%)
- Yellow (41%)

Brightness & Saturation Gradients

These gradients show how the YUV color 136.2110, 7.2910, 88.3920 changes by changing the brightness by 10 percent. The first figure shows a shift by +10% for each color and the second figure -10%.

Similar to the brightness gradients but the following saturation gradients show a change of the YUV color 136.2110, 7.2910, 88.3920 by changing the saturation by 10% instead.

136.2110, 7.2910,
88.3920

136.2110, 7.2910,
88.3920

255.0000, 0.0000,
0.0000

106.0800, 9.3276,
88.5068

181.7950, 11.4401,
64.2008

64.9100, 17.2994,
98.3029

202.0100, 15.2781,
46.4722

52.6170, 11.5278,
82.7739

221.5410, 16.4953,
29.3435

41.4380, 6.1931,
67.1449

238.5640, 8.1029,
14.4144

30.3730, 1.2951,
51.4159

19.7490, -5.7923,
37.9311

8.4860, -3.6906,

17.1138

■ 0.0000, 0.0000,
0.0000

■ 136.2110, 7.2910,
88.3920

■ 136.2110, 7.2910,
88.3920

■ 120.6410, 8.5580,
102.0468

■ 151.7810, 6.0240,
74.7371

■ 105.6580, 9.5356,
115.1869

■ 166.7640, 5.0463,
61.5970

■ 90.0880, 10.8026,
128.8418

■ 182.3340, 3.7793,
47.9421

■ 82.9470, 11.3651,
135.1045

■ 198.0180, 2.9491,
34.1872

■ 213.0010, 1.9715,
21.0471

228.5710, 0.7045,
7.3922

244.1410, -0.5625,
-6.2627

249.6180, 2.6533,
-11.0660

Harmonies

Analogous

The Analogous color harmony consists of three colors that are next to each other on the color wheel.



143.4570, 30.8337, 50.4652



136.2110, 7.2910, 88.3920



134.1320, -19.7851, 92.8462

Triad

The Triadic color harmony groups three colors that are evenly spaced from another and form a triangle on the color wheel.



136.2110, 7.2910, 88.3920



126.2270, -54.8349, -5.4611



121.7700, 55.3294, -106.7923

Complementary

The Complementary color scheme is a pair of colors which are on the opposite of each other on the color wheel.



136.2110, 7.2910, 88.3920



182.7890, -7.2910, -88.3920

Split Complementary

Split-complementary colors differ from the complementary color scheme. The scheme consists of three colors, the original color and two neighbors of the complement color.



118.8740, 34.0791, -104.2525



136.2110, 7.2910, 88.3920



110.0760, -19.2645, -74.6117

Square

The Square scheme is like the rectangle color scheme, but the four colors are evenly spaced on the color wheel.



136.2110, 7.2910, 88.3920



131.5700, -64.8640, 38.0881



112.2620, 8.7448, -98.4538



116.5330, 68.2642, -102.1994

Rectangle

The Rectangle color scheme consists of four colors that form a rectangle on the color wheel.



136.2110, 7.2910, 88.3920



135.1740, -37.0608, 80.5314



112.2620, 8.7448, -98.4538



121.4620, 49.0722, -106.5222

Sweetspot

The Sweet Spot groups the original color and five complimentary colors.



136.2110, 7.2910, 88.3920



221.8710, 2.5286, 29.0541



125.0850, 55.1741, 36.7595



107.8650, 1.5456, 17.6584



0.0000, 0.0000, 0.0000



128.0000, 0.0000, 0.0000

Same Dimension

The Same Dimension uses a secret algorithm to generate beautiful new colors.



136.2110, 7.2910, 88.3920



125.6470, 9.5410, 113.4426



133.0410, -25.1632, 91.1720



109.8590, 0.5625, 6.2627



63.3530, 8.7000, 103.1764



18.8820, 2.5232, 30.7985

Inverse Universe

The Inverse Universe completely reimagines the original color for something new.



136.2110, 7.2910, 88.3920



125.6470, 9.5410, 113.4426



185.9590, 25.1632, -91.1720



109.8590, 0.5625, 6.2627



63.3530, 8.7000, 103.1764



18.8820, 2.5232, 30.7985

Previews

White Background



This preview shows how the YUV color 136.2110, 7.2910, 88.3920 looks on a white background.

Color Contrast Check

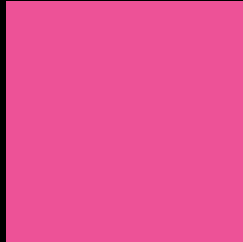
Large Text (above 18pt) WCAG AA ✓ Pass

Any Text WCAG AA ✗ Fail

Large Text (above 18pt) WCAG AAA ✗ Fail

Any Text WCAG AAA ✗ Fail

Black Background



This preview shows how the YUV color 136.2110, 7.2910, 88.3920 looks on a black background.

Color Contrast Check

Large Text (above 18pt) WCAG AA ✓ Pass

Any Text WCAG AA ✓ Pass

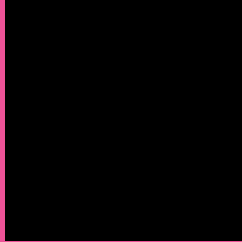
Large Text (above 18pt) WCAG AAA ✓ Pass

Any Text WCAG AAA × Fail

If you want to check with other color combinations, try the [Color Contrast Checker](#).

YUV 136.2110, 7.2910, 88.3920

Background



This preview shows how black text looks on a background with the YUV color 136.2110, 7.2910, 88.3920.



This preview shows how white text looks on a background with the YUV color 136.2110, 7.2910,

Color Blindness Simulation

Color vision deficiency is a very complex topic, and I could not describe the different causes any better than Wikipedia does, so if you want to learn more, you should check out their [article about color blindness](#).

Dichromacy



Original Color

136.2110, 7.2910, 88.3920

Protanopia

140.9980, 23.1720, -12.2762

Deuteranopia

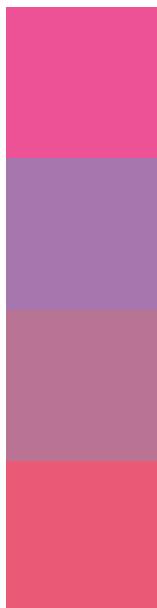
141.8810, 0.5517, 9.7514



Tritanopia

136.2450, -17.8688, 84.8541

Trichromacy



Original Color

136.2110, 7.2910, 88.3920

Protanomaly

139.1490, 17.6745, 24.4253

Deuteranomaly

139.7520, 3.0803, 38.8055

Tritanomaly

136.3620, -8.5595, 85.6285

Monochromacy



Original Color

136.2110, 7.2910, 88.3920

Achromatopsia

136.0000, 0.0000, 0.0000

Achromatomaly

135.8930, 2.5178, 32.5428

CSS Examples

Text

The CSS property to change the color of the text to YUV 136.2110, 7.2910, 88.3920 is called "color". The color property can be set on classes, ids or directly on the HTML element.

This example shows how text in the color `rgb(237, 82, 151)` looks like.

```
.text, #text, p{  
    color:rgb(237, 82, 151)  
}
```

If you want to add a text shadow in that color use the text-shadow property, you can generate a text shadow directly with our [CSS Text Shadow Generator](#).

Here you see how black text with a 4 pixel rgb(237, 82, 151) colored shadow looks like.

```
.shadow{ text-shadow: 4px 4px 2px rgb(237, 82, 151) }
```

Border

The CSS property to change the border of an element to YUV 136.2110, 7.2910, 88.3920 is called "border". The border property can be set on classes, ids or directly on the HTML element.

This example shows the color as border, it can be applied via the CSS property "border" or "border-color".

```
.border, #border, table{ border:4px solid rgb(237, 82, 151) }
```


If only the border color should be changed use the property `border-color`.

```
.border{ border-color:rgb(237, 82, 151) }
```

If you want to add a box shadow in that color use:

Here you see how a box with a 4 pixel `rgb(237, 82, 151)` colored shadow looks like.

```
.boxshadow{ -moz-box-shadow:4px 4px 4px  
4px rgb(237, 82, 151); -webkit-box-  
shadow:4px 4px 4px 4px rgb(237, 82, 151);  
box-shadow:4px 4px 4px 4px rgb(237, 82,  
151) }
```

Background

The CSS property to change the background color of an element to YUV 136.2110, 7.2910, 88.3920 is called "background". The background property can be set on classes, ids or directly on the HTML element.

```
.background, #background, body{  
background: rgb(237, 82, 151) }
```

If only the background color should be changed can be used:

```
.background{ background-color: rgb(237, 82,  
151) }
```

This example shows the color as background, it is applied via the CSS property "background".

To optimize and compress your CSS code, you can use our [online CSS compressor and optimizer](#) based on csstidy. If you want to create a linear or radial gradient as background or border, check our [CSS Gradient Generator](#).

Hey! You found this booklet interesting? Support Converting Colors with the new Membership Option!

The pro membership hides all ads, plus gives you double the colors in the color bucket, and more awesome pro features!

[Learn more, Memberships starting at \\$2.50/m!](#)

**Follow me
on Twitter!**

@ConvertingColor