

# Converting Colors

YUV(136.2180, -13.4185,  
104.1718)

Have a look what the booklet for  
YUV(136.2180, -13.4185, 104.1718)  
contains.

<b>YUV(136.2180, -13.4185, 104.1718)</b> .....	3
<b><i>Conversions</i></b> .....	4
<b><i>Details</i></b> .....	6
<b><i>Harmonies</i></b> .....	12
<b><i>Previews</i></b> .....	24
<b><i>Color Blindness Simulation</i></b> .....	28
<b><i>CSS Examples</i></b> .....	31

# Color

**YUV(136.2180, -13.4185,  
104.1718)**

# Conversions

## Conversions Part 1

<b>Format</b>	<b>Color</b>
Hex	FF516D
RGB	255, 81, 109
RGB Percent	100%, 32%, 43%
CMY	0.0000, 0.6824, 0.5725
CMYK	0.00, 0.68, 0.57, 0.00
HSL	350°, 100%, 66%
HSV	350°, 68%, 100%
XYZ	46.9427, 28.2490, 17.4464
YIQ	136.2180, 94.7160, 45.5960

# Conversions

## Conversions Part 2

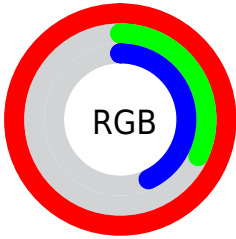
<b>Format</b>	<b>Color</b>
<b>R<sub>YB</sub></b>	255, 81, 109
Decimal	16732525
CIE Lab	60.11, 67.15, 22.60
CIE LCh	60, 70.855, 18.601
Yxy	28.2490, 0.5067, 0.3049
Android (android.graphics.Color)	4294922605 (0xFFFF516D)
YUV	136.2180, -13.4185, 104.1718
Hunter-Lab	53.1498, 64.6420, 17.7429

# Details

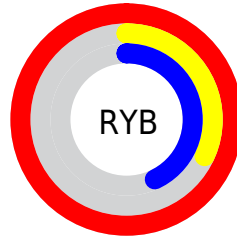
The YUV color **136.2180, -13.4185, 104.1718** is a dark color, and the websafe version is hex **FF3366**. The color can be described as middle muted rose. A complement of this color would be **199.7820, 13.4185, -104.1718**, and the grayscale version is **136.0000, 0.0000, 0.0000**.

A 20% lighter version of the original color is **176.6650, -8.2158, 68.6998**, and **64.4760, -1.2207, 111.8385** is the 20% darker color. If you saturate the color by 10%, you get **119.1490, -15.3565, 119.1413**, and if you desaturate by 10%, it is **153.2870, -11.4805, 89.2023**.

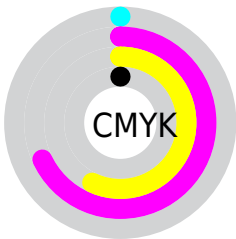
# Distribution



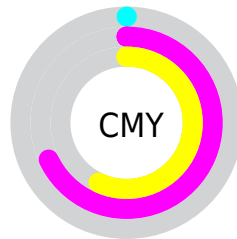
- Red (100%)
- Green (32%)
- Blue (43%)



- Red (100%)
- Yellow (32%)
- Blue (43%)



- Cyan (0%)
- Magenta (68%)
- Yellow (57%)
- Black (0%)



- Cyan (0%)
- Magenta (68%)
- Yellow (57%)

# Brightness & Saturation Gradients

These gradients show how the YUV color 136.2180, -13.4185, 104.1718 changes by changing the brightness by 10 percent. The first figure shows a shift by +10% for each color and the second figure -10%.

Similar to the brightness gradients but the following saturation gradients show a change of the YUV color 136.2180, -13.4185, 104.1718 by changing the saturation by 10% instead.



136.2180,  
-13.4185, 104.1718

136.2180,  
-13.4185, 104.1718

255.0000, 0.0000,  
0.0000

104.5430, -9.6347,  
103.8868

176.6650, -8.2158,  
68.6998

64.4760, -1.2207,  
111.8385

196.7660, -4.8146,  
51.0712

52.6990, -6.2606,  
94.9800

216.9810, -0.9766,  
33.3427

41.2640, -9.9902,  
77.8215

237.7830, 2.5720,  
15.0993

29.6010, -14.5933,  
60.8629

21.5710, -9.1555,  
43.3492

11.4760, -5.1647,

23.2615

■ 0.0000, 0.0000,  
0.0000

■ 136.2180,  
-13.4185, 104.1718

■ 136.2180,  
-13.4185, 104.1718

■ 119.1490,  
-15.3565, 119.1413

■ 153.2870,  
-11.4805, 89.2023

■ 101.3790,  
-17.4418, 134.7256

■ 171.0570, -9.3951,  
73.6180

■ 84.3100, -19.3798,  
149.6951

■ 188.7130, -7.7465,  
58.1337

■ 80.9190, -19.6801,  
152.6690

■ 205.8960, -5.3717,  
43.0642

■ 223.5520, -3.7231,  
27.5799

240.6210, -1.7852,  
12.6104

255.0000, 0.0000,  
0.0000

# Harmonies

## Analogous

The Analogous color harmony consists of three colors that are next to each other on the color wheel.



140.5840, 14.9951, 90.6958



136.2180, -13.4185, 104.1718



138.3010, -43.0394, 84.8050

# Triad

The Triadic color harmony groups three colors that are evenly spaced from another and form a triangle on the color wheel.



136.2180, -13.4185, 104.1718



119.8580, -31.9750, -57.7575



122.4030, 65.3703, -107.3474

# Complementary

The Complementary color scheme is a pair of colors which are on the opposite of each other on the color wheel.



136.2180, -13.4185, 104.1718



199.7820, 13.4185, -104.1718

# Split Complementary

Split-complementary colors differ from the complementary color scheme. The scheme consists of three colors, the original color and two neighbors of the complement color.



126.9220, 54.7615, -111.3106



136.2180, -13.4185, 104.1718



114.4160, 1.7669, -100.3428

# Square

The Square scheme is like the rectangle color scheme, but the four colors are evenly spaced on the color wheel.



136.2180, -13.4185, 104.1718



131.3610, -64.7610, 4.9454



122.4130, 29.8694, -107.3562



136.9750, 58.1863, -42.9511



# Rectangle

The Rectangle color scheme consists of four colors that form a rectangle on the color wheel.



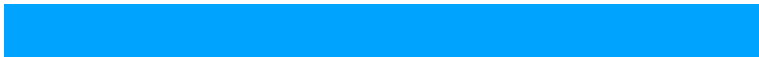
136.2180, -13.4185, 104.1718



136.3220, -65.2347, 63.7386



122.4130, 29.8694, -107.3562



125.3380, 63.9234, -109.9214

# Sweetspot

The Sweet Spot groups the original color and five complimentary colors.



136.2180, -13.4185, 104.1718



220.1610, -4.0234, 30.5538



144.1910, 54.6288, 71.7465



106.8390, -2.3856, 18.5582



0.0000, 0.0000, 0.0000



128.0000, 0.0000, 0.0000



# Same Dimension

The Same Dimension uses a secret algorithm to generate beautiful new colors.



136.2180, -13.4185, 104.1718



112.3670, -15.9569, 125.0891



167.0720, -42.4335, 77.1129



119.1150, -1.0427, 7.7921



60.6430, -14.6140, 114.3231



20.2760, -5.0661, 38.3459



# Inverse Universe

The Inverse Universe completely reimagines the original color for something new.



136.2180, -13.4185, 104.1718



112.3670, -15.9569, 125.0891



168.9280, 42.4335, -77.1129



119.1150, -1.0427, 7.7921



60.6430, -14.6140, 114.3231



20.2760, -5.0661, 38.3459



# Previews

## White Background



This preview shows how the YUV color 136.2180, -13.4185, 104.1718 looks on a white background.

## Color Contrast Check

Large Text (above 18pt) WCAG AA ✓ Pass

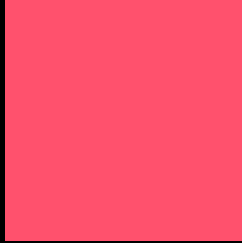
Any Text WCAG AA ✗ Fail

Large Text (above 18pt) WCAG AAA ✗ Fail

Any Text WCAG AAA ✗ Fail



# Black Background



This preview shows how the YUV color 136.2180, -13.4185, 104.1718 looks on a black background.

## Color Contrast Check

Large Text (above 18pt) WCAG AA ✓ Pass

Any Text WCAG AA ✓ Pass

Large Text (above 18pt) WCAG AAA ✓ Pass

Any Text WCAG AAA × Fail

If you want to check with other color combinations, try the [Color Contrast Checker](#).

# YUV 136.2180, -13.4185, 104.1718 Background



This preview shows how black text looks on a background with the YUV color 136.2180, -13.4185, 104.1718.



This preview shows how white text looks on a background with the YUV color 136.2180, -13.4185, 104.1718.



# Color Blindness Simulation

Color vision deficiency is a very complex topic, and I could not describe the different causes any better than Wikipedia does, so if you want to learn more, you should check out their [article about color blindness](#).

## Dichromacy



### Original Color

136.2180, -13.4185, 104.1718

### Protanopia

145.5120, -3.2104, 3.0590

### Deuteranopia

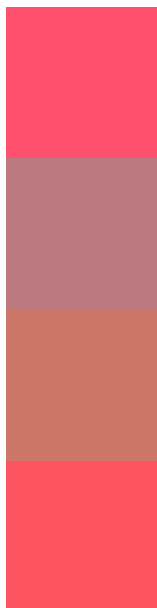
144.7200, -22.0470, 24.8016



## Tritanopia

135.9870, -23.1646, 103.4974

# Trichromacy



## Original Color

136.2180, -13.4185, 104.1718

## Protanomaly

142.4180, -7.1081, 39.9754

## Deuteranomaly

141.7050, -19.0816, 53.7557

## Tritanomaly

136.1980, -19.8176, 103.3124

# Monochromacy



## Original Color

136.2180, -13.4185, 104.1718

## Achromatopsia

136.0000, 0.0000, 0.0000

## Achromatomaly

135.9770, -4.9187, 37.7312

# CSS Examples

## Text

The CSS property to change the color of the text to YUV 136.2180, -13.4185, 104.1718 is called "color". The color property can be set on classes, ids or directly on the HTML element.

This example shows how text in the color `rgb(255, 81, 109)` looks like.

```
.text, #text, p{  
    color:rgb(255, 81, 109)  
}
```

If you want to add a text shadow in that color use the text-shadow property, you can generate a text shadow directly with our [CSS Text Shadow Generator](#).

Here you see how black text with a 4 pixel rgb(255, 81, 109) colored shadow looks like.

```
.shadow{ text-shadow: 4px 4px 2px rgb(255, 81, 109) }
```

## Border

The CSS property to change the border of an element to YUV 136.2180, -13.4185, 104.1718 is called "border".

The border property can be set on classes, ids or directly on the HTML element.

This example shows the color as border, it can be applied via the CSS property "border" or "border-color".

```
.border, #border, table{ border:4px solid rgb(255, 81, 109) }
```



If only the border color should be changed use the property `border-color`.

```
.border{ border-color:rgb(255, 81, 109) }
```

If you want to add a box shadow in that color use:

Here you see how a box with a 4 pixel `rgb(255, 81, 109)` colored shadow looks like.

```
.boxshadow{ -moz-box-shadow:4px 4px 4px  
4px rgb(255, 81, 109); -webkit-box-  
shadow:4px 4px 4px 4px rgb(255, 81, 109);  
box-shadow:4px 4px 4px 4px rgb(255, 81,  
109) }
```

# Background

The CSS property to change the background color of an element to YUV 136.2180, -13.4185, 104.1718 is called "background". The background property can be set on classes, ids or directly on the HTML element.

```
.background, #background, body{  
background: rgb(255, 81, 109) }
```

If only the background color should be changed can be used:

```
.background{ background-color: rgb(255, 81,  
109) }
```

This example shows the color as background, it is applied via the CSS property "background".

To optimize and compress your CSS code, you can use our [online CSS compressor and optimizer](#) based on csstidy. If you want to create a linear or radial gradient as background or border, check our [CSS Gradient Generator](#).

Hey! You found this booklet interesting? Support Converting Colors with the new Membership Option!

The pro membership hides all ads, plus gives you double the colors in the color bucket, and more awesome pro features!

**[Learn more, Memberships starting at \\$2.50/m!](#)**

**Follow me  
on Twitter!**

@ConvertingColor