

# Converting Colors

YUV(136.2950, -17.4004,  
27.8053)

Have a look what the booklet for  
YUV(136.2950, -17.4004, 27.8053)  
contains.

<b>YUV(136.2950, -17.4004, 27.8053)</b> .....	3
<b><i>Conversions</i></b> .....	4
<b><i>Details</i></b> .....	6
<b><i>Harmonies</i></b> .....	12
<b><i>Previews</i></b> .....	24
<b><i>Color Blindness Simulation</i></b> .....	28
<b><i>CSS Examples</i></b> .....	31

# Color

**YUV(136.2950, -17.4004,  
27.8053)**

# Conversions

## Conversions Part 1

<b>Format</b>	<b>Color</b>
Hex	A87F65
RGB	168, 127, 101
RGB Percent	66%, 50%, 40%
CMY	0.3412, 0.5020, 0.6039
CMYK	0.00, 0.24, 0.40, 0.34
HSL	23°, 28%, 53%
HSV	23°, 40%, 66%
XYZ	26.0868, 24.4432, 15.6550
YIQ	136.2950, 32.7820, 0.6060

# Conversions

## Conversions Part 2

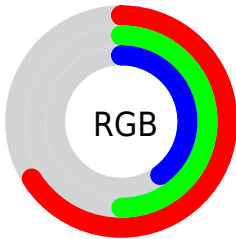
<b>Format</b>	<b>Color</b>
<b>R<sub>YB</sub></b>	168, 143, 101
Decimal	11042661
CIE <sub>Lab</sub>	56.53, 12.31, 20.27
CIE <sub>LCh</sub>	57, 23.719, 58.731
Yxy	24.4432, 0.3941, 0.3693
Android (android.graphics.Color)	4289232741 (0xFFA87F65)
YUV	136.2950, -17.4004, 27.8053
Hunter-Lab	49.4400, 7.6646, 15.8341

# Details

The YUV color  $136.2950, -17.4004, 27.8053$  is a dark color, and the websafe version is hex  $996666$ . A complement of this color would be  $132.7050, 17.4004, -27.8053$ , and the grayscale version is  $136.0000, 0.0000, 0.0000$ .

A 20% lighter version of the original color is  $189.9640, -18.7163, 29.8496$ , and  $86.0280, -15.7898, 24.5314$  is the 20% darker color. If you saturate the color by 10%, you get  $128.4870, -21.9321, 34.6529$ , and if you desaturate by 10%, it is  $144.1030, -12.8688, 20.9577$ .

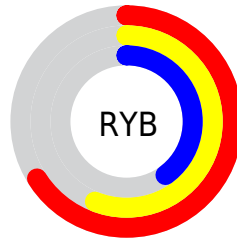
# Distribution



Red (66%)

Green (50%)

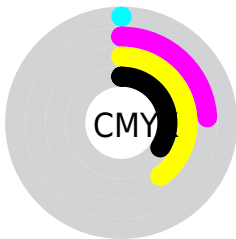
Blue (40%)



Red (66%)

Yellow (56%)

Blue (40%)

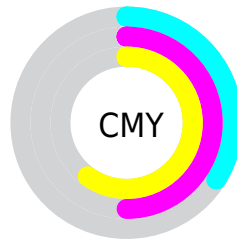


Cyan (0%)

Magenta (24%)

Yellow (40%)

Black (34%)



Cyan (34%)

Magenta (50%)

Yellow (60%)

# Brightness & Saturation Gradients

These gradients show how the YUV color 136.2950, -17.4004, 27.8053 changes by changing the brightness by 10 percent. The first figure shows a shift by +10% for each color and the second figure -10%.

Similar to the brightness gradients but the following saturation gradients show a change of the YUV color 136.2950, -17.4004, 27.8053 by changing the saturation by 10% instead.



■ 136.2950,  
-17.4004, 27.8053

■ 136.2950,  
-17.4004, 27.8053

■ 255.0000, 0.0000,  
0.0000

■ 110.8110,  
-16.6688, 26.4758

■ 189.9640,  
-18.7163, 29.8496

■ 86.0280, -15.7898,  
24.5314

■ 217.8610,  
-19.1585, 31.6939

■ 62.2450, -14.9108,  
22.5871

■ 238.2610,  
-15.9047, 14.6801

■ 39.6470, -14.6160,  
21.3576

■ 252.7200, -8.7360,  
1.9996

■ 19.5910, -9.6584,  
17.8987

■ 0.0000, 0.0000,  
0.0000

■ 136.2950,  
-17.4004, 27.8053

■ 136.2950,  
-17.4004, 27.8053

■ 128.4870,  
-21.9321, 34.6529

■ 144.1030,  
-12.8688, 20.9577

■ 120.0920,  
-26.1744, 42.0153

■ 152.4980, -8.6265,  
13.5953

■ 112.3980,  
-30.2692, 48.7630

■ 160.1920, -4.5317,  
6.8476

■ 104.5900,  
-34.8009, 55.6106

■ 168.0000, 0.0000,  
0.0000

■ 96.7820, -39.3325,  
62.4582

■ 175.8080, 4.5317,  
-6.8476

■ 88.3870, -43.5748,  
69.8206

■ 184.2030, 8.7739,  
-14.2100

■ 192.0110, 13.3056,  
-21.0576

■ 199.7050, 17.4004,

-27.8053

■ 208.1000, 21.6427,  
-35.1677

# Harmonies

## Analogous

The Analogous color harmony consists of three colors that are next to each other on the color wheel.



137.8750, -10.2914, 34.3126



136.2950, -17.4004, 27.8053



134.5230, -19.9778, 14.4503

# Triad

The Triadic color harmony groups three colors that are evenly spaced from another and form a triangle on the color wheel.



136.2950, -17.4004, 27.8053



126.3820, 3.7557, -38.0460



137.4680, 17.0243, -0.4104

# Complementary

The Complementary color scheme is a pair of colors which are on the opposite of each other on the color wheel.



136.2950, -17.4004, 27.8053



132.7050, 17.4004, -27.8053

# Split Complementary

Split-complementary colors differ from the complementary color scheme. The scheme consists of three colors, the original color and two neighbors of the complement color.



133.3620, 21.0205, -22.2425



136.2950, -17.4004, 27.8053



125.4870, 14.5499, -46.9081

# Square

The Square scheme is like the rectangle color scheme, but the four colors are evenly spaced on the color wheel.



136.2950, -17.4004, 27.8053



129.8050, -7.7919, -20.8770



127.8390, 20.7854, -40.2008



138.8250, 8.9603, 19.4475



# Rectangle

The Rectangle color scheme consists of four colors that form a rectangle on the color wheel.



136.2950, -17.4004, 27.8053



132.9130, -18.1981, 3.5843



127.8390, 20.7854, -40.2008



136.1790, 18.6458, -7.1730

# Sweetspot

The Sweet Spot groups the original color and five complimentary colors.



136.2950, -17.4004, 27.8053



206.6440, -6.7265, 10.8362



125.7070, 8.0324, 37.0910



102.3060, -4.0949, 6.7476



237.0000, 0.0000, 0.0000



110.0000, 0.0000, 0.0000



# Same Dimension

The Same Dimension uses a secret algorithm to generate beautiful new colors.



136.2950, -17.4004, 27.8053



169.4620, -27.3428, 43.4448



155.6660, -26.9503, 10.8169



80.1530, -2.0474, 3.3738



77.7110, -38.3115, 61.6435



10.6760, -5.2633, 8.1771



# Inverse Universe

The Inverse Universe completely reimagines the original color for something new.



132.7050, 17.4004, -27.8053



163.5380, 27.3428, -43.4448



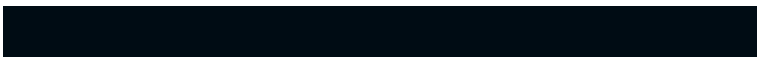
113.3340, 26.9503, -10.8169



79.8470, 2.0474, -3.3738



70.2890, 38.3115, -61.6435



9.3240, 5.2633, -8.1771



# Previews

## White Background



This preview shows how the YUV color 136.2950, -17.4004, 27.8053 looks on a white background.

## Color Contrast Check

Large Text (above 18pt) WCAG AA ✓ Pass

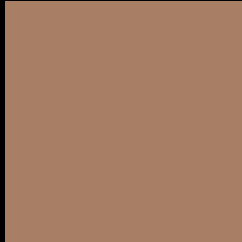
Any Text WCAG AA × Fail

Large Text (above 18pt) WCAG AAA × Fail

Any Text WCAG AAA × Fail



# Black Background



This preview shows how the YUV color 136.2950, -17.4004, 27.8053 looks on a black background.

## Color Contrast Check

Large Text (above 18pt) WCAG AA ✓ Pass

Any Text WCAG AA ✓ Pass

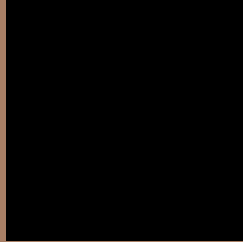
Large Text (above 18pt) WCAG AAA ✓ Pass

Any Text WCAG AAA × Fail

If you want to check with other color combinations, try the [Color Contrast Checker](#).

# YUV 136.2950, -17.4004, 27.8053

## Background



This preview shows how black text looks on a background with the YUV color 136.2950, -17.4004, 27.8053.



This preview shows how white text looks on a background with the YUV color 136.2950, -17.4004,



# Color Blindness Simulation

Color vision deficiency is a very complex topic, and I could not describe the different causes any better than Wikipedia does, so if you want to learn more, you should check out their [article about color blindness](#).

## Dichromacy



### Original Color

136.2950, -17.4004, 27.8053

### Protanopia

135.1570, -14.8674, 8.6323

### Deuteranopia

135.8490, -17.6736, 22.0574



## Tritanopia

138.3780, -3.1444, 28.6095

# Trichromacy



## Original Color

136.2950, -17.4004, 27.8053

## Protanomaly

135.6740, -15.6153, 15.1949

## Deuteranomaly

136.1590, -17.8264, 24.4166

## Tritanomaly

137.4120, -8.0911, 28.5797

# Monochromacy



## Original Color

136.2950, -17.4004, 27.8053

## Achromatopsia

136.0000, 0.0000, 0.0000

## Achromatomaly

136.3450, -6.5791, 10.2214

# CSS Examples

## Text

The CSS property to change the color of the text to YUV 136.2950, -17.4004, 27.8053 is called "color". The color property can be set on classes, ids or directly on the HTML element.

This example shows how text in the color `rgb(168, 127, 101)` looks like.

```
.text, #text, p{  
    color:rgb(168, 127, 101)  
}
```

If you want to add a text shadow in that color use the text-shadow property, you can generate a text shadow directly with our [CSS Text Shadow Generator](#).

Here you see how black text with a 4 pixel rgb(168, 127, 101) colored shadow looks like.

```
.shadow{ text-shadow: 4px 4px 2px rgb(168, 127, 101) }
```

## Border

The CSS property to change the border of an element to YUV 136.2950, -17.4004, 27.8053 is called "border".

The border property can be set on classes, ids or directly on the HTML element.

This example shows the color as border, it can be applied via the CSS property "border" or "border-color".

```
.border, #border, table{ border:4px solid rgb(168, 127, 101) }
```



If only the border color should be changed use the property `border-color`.

```
.border{ border-color:rgb(168, 127, 101) }
```

If you want to add a box shadow in that color use:

Here you see how a box with a 4 pixel `rgb(168, 127, 101)` colored shadow looks like.

```
.boxshadow{ -moz-box-shadow:4px 4px 4px  
4px rgb(168, 127, 101); -webkit-box-  
shadow:4px 4px 4px 4px rgb(168, 127, 101);  
box-shadow:4px 4px 4px 4px rgb(168, 127,  
101) }
```

# Background

The CSS property to change the background color of an element to YUV 136.2950, -17.4004, 27.8053 is called "background". The background property can be set on classes, ids or directly on the HTML element.

```
.background, #background, body{  
background: rgb(168, 127, 101) }
```

If only the background color should be changed can be used:

```
.background{ background-color: rgb(168,  
127, 101) }
```

This example shows the color as background, it is applied via the CSS property "background".

To optimize and compress your CSS code, you can use our [online CSS compressor and optimizer](#) based on csstidy. If you want to create a linear or radial gradient as background or border, check our [CSS Gradient Generator](#).

Hey! You found this booklet interesting? Support Converting Colors with the new Membership Option!

The pro membership hides all ads, plus gives you double the colors in the color bucket, and more awesome pro features!

**[Learn more, Memberships starting at \\$2.50/m!](#)**

**Follow me  
on Twitter!**

@ConvertingColor