

Converting Colors

YUV(136.4170, -22.3906,
41.7303)

Have a look what the booklet for
YUV(136.4170, -22.3906, 41.7303)
contains.

YUV(136.4170, -22.3906, 41.7303)	3
<i>Conversions</i>	4
<i>Details</i>	6
<i>Harmonies</i>	12
<i>Previews</i>	24
<i>Color Blindness Simulation</i>	28
<i>CSS Examples</i>	31

Color

**YUV(136.4170, -22.3906,
41.7303)**

Conversions

Conversions Part 1

Format	Color
Hex	B8795B
RGB	184, 121, 91
RGB Percent	72%, 47%, 36%
CMY	0.2784, 0.5255, 0.6431
CMYK	0.00, 0.34, 0.51, 0.28
HSL	19°, 40%, 54%
HSV	19°, 51%, 72%
XYZ	28.4929, 24.6204, 13.1480
YIQ	136.4170, 47.1780, 4.0260

Conversions

Conversions Part 2

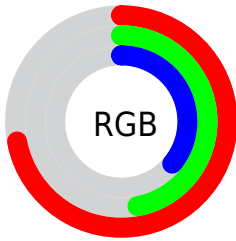
Format	Color
RYB	184, 135, 91
Decimal	12089691
CIELab	56.70, 21.26, 26.50
CIELCh	57, 33.969, 51.264
Yxy	24.6204, 0.4300, 0.3716
Android (android.graphics.Color)	4290279771 (0xFFB8795B)
YUV	136.4170, -22.3906, 41.7303
Hunter-Lab	49.6190, 15.6674, 19.0226

Details

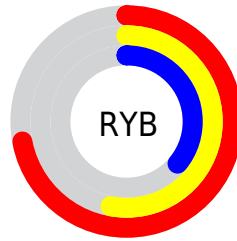
The YUV color **136.4170, -22.3906, 41.7303** is a dark color, and the websafe version is hex **996633**. A complement of this color would be **138.5830, 22.3906, -41.7303**, and the grayscale version is **137.0000, 0.0000, 0.0000**.

A 20% lighter version of the original color is **190.6840, -24.0012, 45.0041**, and **85.6660, -20.0483, 37.1269** is the 20% darker color. If you saturate the color by 10%, you get **127.3210, -26.7803, 49.7075**, and if you desaturate by 10%, it is **145.5130, -18.0009, 33.7531**.

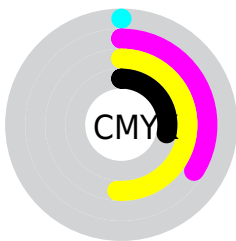
Distribution



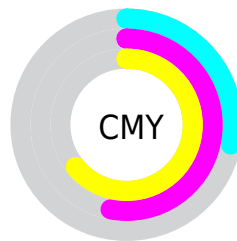
- Red (72%)
- Green (47%)
- Blue (36%)



- Red (72%)
- Yellow (53%)
- Blue (36%)



- Cyan (0%)
- Magenta (34%)
- Yellow (51%)
- Black (28%)



- Cyan (28%)
- Magenta (53%)
- Yellow (64%)

Brightness & Saturation Gradients

These gradients show how the YUV color 136.4170, -22.3906, 41.7303 changes by changing the brightness by 10 percent. The first figure shows a shift by +10% for each color and the second figure -10%.

Similar to the brightness gradients but the following saturation gradients show a change of the YUV color 136.4170, -22.3906, 41.7303 by changing the saturation by 10% instead.

■ 136.4170,
-22.3906, 41.7303

■ 136.4170,
-22.3906, 41.7303

■ 255.0000, 0.0000,
0.0000

■ 110.6340,
-21.5116, 39.7860

■ 190.6840,
-24.0012, 45.0041

■ 85.6660, -20.0483,
37.1269

■ 213.3840,
-22.3743, 36.4972

■ 61.5840, -19.0219,
34.5678

■ 232.8980,
-18.6837, 19.3835

■ 38.2740, -18.8691,
32.2087

■ 251.3520,
-13.9775, 3.1993

■ 17.5860, -8.6699,
27.5501

■ 254.6580, -1.3104,
0.2999

■ 5.0830, -2.5059,
10.4512

■ 0.0000, 0.0000,

0.0000

■ 136.4170,
-22.3906, 41.7303

■ 136.4170,
-22.3906, 41.7303

■ 127.3210,
-26.7803, 49.7075

■ 145.5130,
-18.0009, 33.7531

■ 117.5240,
-31.3173, 58.2995

■ 155.3100,
-13.4638, 25.1611

■ 108.4280,
-35.7070, 66.2766

■ 164.4060, -9.0742,
17.1839

■ 98.6310, -40.2441,
74.8686

■ 174.2030, -4.5371,
8.5920

■ 89.6490, -44.1970,
82.7458

■ 183.2990, -0.1474,
0.6148

■ 192.9820, 3.9529,
-7.8772

■ 202.1920, 8.7793,
-15.9544

■ 211.8750, 12.8796,
-24.4464

■ 220.8570, 16.8325,
-32.3236

Harmonies

Analogous

The Analogous color harmony consists of three colors that are next to each other on the color wheel.



137.8490, -10.7716, 48.3674



136.4170, -22.3906, 41.7303



134.4120, -28.3041, 25.0717

Triad

The Triadic color harmony groups three colors that are evenly spaced from another and form a triangle on the color wheel.



136.4170, -22.3906, 41.7303



120.6420, 2.6415, -54.0600



136.9320, 26.6555, -9.5874

Complementary

The Complementary color scheme is a pair of colors which are on the opposite of each other on the color wheel.



136.4170, -22.3906, 41.7303



138.5830, 22.3906, -41.7303

Split Complementary

Split-complementary colors differ from the complementary color scheme. The scheme consists of three colors, the original color and two neighbors of the complement color.



127.8950, 32.5898, -46.3889



136.4170, -22.3906, 41.7303



107.0080, 24.1531, -93.8460

Square

The Square scheme is like the rectangle color scheme, but the four colors are evenly spaced on the color wheel.



136.4170, -22.3906, 41.7303



127.9480, -14.7644, -24.5104



107.5100, 36.2306, -94.2863



140.0840, 16.2276, 21.8513

Rectangle

The Rectangle color scheme consists of four colors that form a rectangle on the color wheel.



136.4170, -22.3906, 41.7303



132.8400, -27.5291, 9.7873



107.5100, 36.2306, -94.2863



134.5500, 29.3088, -20.6534

Sweetspot

The Sweet Spot groups the original color and five complimentary colors.



136.4170, -22.3906, 41.7303



221.2210, -8.4900, 16.4692



126.1030, 14.2462, 50.7757



108.6870, -5.2687, 9.9215



247.0000, 0.0000, 0.0000



120.0000, 0.0000, 0.0000

Same Dimension

The Same Dimension uses a secret algorithm to generate beautiful new colors.



136.4170, -22.3906, 41.7303



165.1290, -35.5596, 65.6619



163.4190, -35.7026, 18.0495



87.4520, -2.1948, 3.9886



75.9940, -37.4650, 70.1653



13.6550, -6.7319, 12.5806

Inverse Universe

The Inverse Universe completely reimagines the original color for something new.



138.5830, 22.3906, -41.7303



168.4580, 35.2702, -66.1767



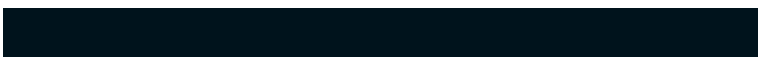
111.5810, 35.7026, -18.0495



87.5480, 2.1948, -3.9886



79.4190, 37.7544, -69.6505



14.3450, 6.7319, -12.5806

Previews

White Background



This preview shows how the YUV color 136.4170, -22.3906, 41.7303 looks on a white background.

Color Contrast Check

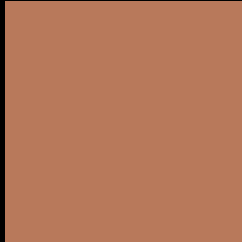
Large Text (above 18pt) WCAG AA ✓ Pass

Any Text WCAG AA × Fail

Large Text (above 18pt) WCAG AAA × Fail

Any Text WCAG AAA × Fail

Black Background



This preview shows how the YUV color 136.4170, -22.3906, 41.7303 looks on a black background.

Color Contrast Check

Large Text (above 18pt) WCAG AA ✓ Pass

Any Text WCAG AA ✓ Pass

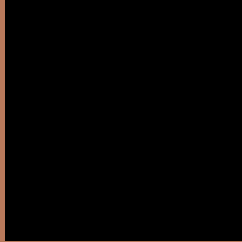
Large Text (above 18pt) WCAG AAA ✓ Pass

Any Text WCAG AAA × Fail

If you want to check with other color combinations, try the [Color Contrast Checker](#).

YUV 136.4170, -22.3906, 41.7303

Background



This preview shows how black text looks on a background with the YUV color 136.4170, -22.3906, 41.7303.



This preview shows how white text looks on a background with the YUV color 136.4170, -22.3906, 41.7303.

Color Blindness Simulation

Color vision deficiency is a very complex topic, and I could not describe the different causes any better than Wikipedia does, so if you want to learn more, you should check out their [article about color blindness](#).

Dichromacy



Original Color

136.4170, -22.3906, 41.7303

Protanopia

134.8430, -18.6566, 10.6617

Deuteranopia

135.4920, -22.9206, 25.0015



Tritanopia

138.2550, -6.5347, 42.7494

Trichromacy



Original Color

136.4170, -22.3906, 41.7303

Protanomaly

135.5670, -19.9995, 21.4277

Deuteranomaly

135.9380, -22.6474, 30.7494

Tritanomaly

137.7620, -12.2077, 42.3047

Monochromacy



Original Color

136.4170, -22.3906, 41.7303

Achromatopsia

136.0000, 0.0000, 0.0000

Achromatomaly

136.3240, -8.0477, 14.6249

CSS Examples

Text

The CSS property to change the color of the text to YUV 136.4170, -22.3906, 41.7303 is called "color". The color property can be set on classes, ids or directly on the HTML element.

This example shows how text in the color `rgb(184, 121, 91)` looks like.

```
.text, #text, p{  
    color:rgb(184, 121, 91)  
}
```

If you want to add a text shadow in that color use the text-shadow property, you can generate a text shadow directly with our [CSS Text Shadow Generator](#).

Here you see how black text with a 4 pixel rgb(184, 121, 91) colored shadow looks like.

```
.shadow{ text-shadow: 4px 4px 2px rgb(184, 121, 91) }
```

Border

The CSS property to change the border of an element to YUV 136.4170, -22.3906, 41.7303 is called "border".

The border property can be set on classes, ids or directly on the HTML element.

This example shows the color as border, it can be applied via the CSS property "border" or "border-color".

```
.border, #border, table{ border:4px solid rgb(184, 121, 91) }
```


If only the border color should be changed use the property `border-color`.

```
.border{ border-color:rgb(184, 121, 91) }
```

If you want to add a box shadow in that color use:

Here you see how a box with a 4 pixel `rgb(184, 121, 91)` colored shadow looks like.

```
.boxshadow{ -moz-box-shadow:4px 4px 4px  
4px rgb(184, 121, 91); -webkit-box-  
shadow:4px 4px 4px 4px rgb(184, 121, 91);  
box-shadow:4px 4px 4px 4px rgb(184, 121,  
91) }
```

Background

The CSS property to change the background color of an element to YUV 136.4170, -22.3906, 41.7303 is called "background". The background property can be set on classes, ids or directly on the HTML element.

```
.background, #background, body{  
background: rgb(184, 121, 91) }
```

If only the background color should be changed can be used:

```
.background{ background-color: rgb(184,  
121, 91) }
```

This example shows the color as background, it is applied via the CSS property "background".

To optimize and compress your CSS code, you can use our [online CSS compressor and optimizer](#) based on csstidy. If you want to create a linear or radial gradient as background or border, check our [CSS Gradient Generator](#).

Hey! You found this booklet interesting? Support Converting Colors with the new Membership Option!

The pro membership hides all ads, plus gives you double the colors in the color bucket, and more awesome pro features!

[Learn more, Memberships starting at \\$2.50/m!](#)

**Follow me
on Twitter!**

@ConvertingColor