

Converting Colors

YUV(136.7460, -0.8608,
89.6768)

Have a look what the booklet for
YUV(136.7460, -0.8608, 89.6768)
contains.

YUV(136.7460, -0.8608, 89.6768)	3
<i>Conversions</i>	4
<i>Details</i>	6
<i>Harmonies</i>	12
<i>Previews</i>	24
<i>Color Blindness Simulation</i>	28
<i>CSS Examples</i>	31

Color

**YUV(136.7460, -0.8608,
89.6768)**

Conversions

Conversions Part 1

Format	Color
Hex	EF5587
RGB	239, 85, 135
RGB Percent	94%, 33%, 53%
CMY	0.0627, 0.6667, 0.4706
CMYK	0.00, 0.64, 0.44, 0.06
HSL	341°, 83%, 64%
HSV	341°, 64%, 94%
XYZ	43.2183, 26.5970, 25.7775
YIQ	136.7460, 75.7340, 48.1980

Conversions

Conversions Part 2

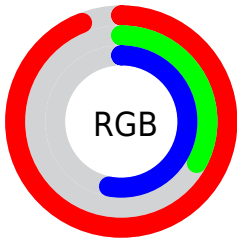
Format	Color
R _Y B	239, 85, 135
Decimal	15684999
CIE Lab	58.60, 62.94, 4.89
CIE LCh	59, 63.126, 4.447
Yxy	26.5970, 0.4521, 0.2782
Android (android.graphics.Color)	4293875079 (0xFFEF5587)
YUV	136.7460, -0.8608, 89.6768
Hunter-Lab	51.5723, 59.3340, 6.4655

Details

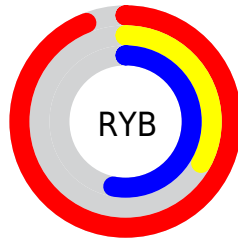
The YUV color **136.7460, -0.8608, 89.6768** is a light color, and the websafe version is hex **FF6699**. The color can be described as light muted rose. A complement of this color would be **187.2540, 0.8608, -89.6768**, and the grayscale version is **137.0000, 0.0000, 0.0000**.

A 20% lighter version of the original color is **181.0310, 3.4357, 64.8708**, and **70.6570, 7.5641, 94.1398** is the 20% darker color. If you saturate the color by 10%, you get **120.8340, -0.9042, 103.6316**, and if you desaturate by 10%, it is **152.6580, -0.8174, 75.7219**.

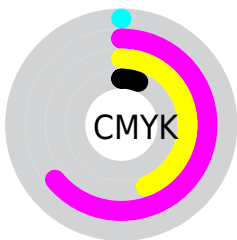
Distribution



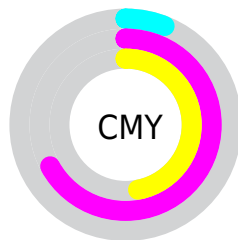
- Red (94%)
- Green (33%)
- Blue (53%)



- Red (94%)
- Yellow (33%)
- Blue (53%)



- Cyan (0%)
- Magenta (64%)
- Yellow (44%)
- Black (6%)



- Cyan (6%)
- Magenta (67%)
- Yellow (47%)

Brightness & Saturation Gradients

These gradients show how the YUV color 136.7460, -0.8608, 89.6768 changes by changing the brightness by 10 percent. The first figure shows a shift by +10% for each color and the second figure -10%.

Similar to the brightness gradients but the following saturation gradients show a change of the YUV color 136.7460, -0.8608, 89.6768 by changing the saturation by 10% instead.

136.7460, -0.8608,
89.6768

136.7460, -0.8608,
89.6768

255.0000, 0.0000,
0.0000

107.0170, 1.4706,
88.5621

181.0310, 3.4357,
64.8708

70.6570, 7.5641,
94.1398

201.2460, 7.2737,
47.1423

51.4340, 5.7020,
84.6884

221.4610, 11.1117,
29.4137

40.2550, 0.3673,
69.0594

239.7380, 7.5242,
13.3848

29.0050, -3.9465,
52.6156

19.1790, -7.9762,
38.4310

8.1870, -3.5432,

16.4990

■ 0.0000, 0.0000,
0.0000

■ 136.7460, -0.8608,
89.6768

■ 136.7460, -0.8608,
89.6768

■ 120.8340, -0.9042,
103.6316

■ 152.6580, -0.8174,
75.7219

■ 104.9220, -0.9475,
117.5864

■ 168.5700, -0.7740,
61.7671

■ 89.0100, -0.9909,
131.5412

■ 184.4820, -0.7306,
47.8123

■ 80.3530, -1.1600,
139.1334

■ 200.5080, -0.2504,
33.7575

■ 215.8330, 0.0823,
20.3175

231.7450, 0.1257,
6.3626

247.6570, 0.1691,
-7.5922

250.2160, 2.3585,
-9.8364

Harmonies

Analogous

The Analogous color harmony consists of three colors that are next to each other on the color wheel.



142.5850, 23.3756, 62.6310



136.7460, -0.8608, 89.6768



136.1390, -27.1835, 85.8241

Triad

The Triadic color harmony groups three colors that are evenly spaced from another and form a triangle on the color wheel.



136.7460, -0.8608, 89.6768



126.2280, -43.0034, -20.3710



120.8070, 59.2551, -105.9477

Complementary

The Complementary color scheme is a pair of colors which are on the opposite of each other on the color wheel.



136.7460, -0.8608, 89.6768



187.2540, 0.8608, -89.6768

Split Complementary

Split-complementary colors differ from the complementary color scheme. The scheme consists of three colors, the original color and two neighbors of the complement color.



120.4700, 40.1943, -105.6522



136.7460, -0.8608, 89.6768



106.0550, -7.4221, -93.0102

Square

The Square scheme is like the rectangle color scheme, but the four colors are evenly spaced on the color wheel.



136.7460, -0.8608, 89.6768



130.9060, -64.5367, 26.3924



114.9010, 16.3178, -100.7682



113.8430, 68.1114, -99.8403

Rectangle

The Rectangle color scheme consists of four colors that form a rectangle on the color wheel.



136.7460, -0.8608, 89.6768



136.3270, -42.5592, 70.7502



114.9010, 16.3178, -100.7682



121.3140, 53.5822, -106.3924

Sweetspot

The Sweet Spot groups the original color and five complimentary colors.



136.7460, -0.8608, 89.6768



223.0620, -0.5236, 28.0096



133.3530, 52.0840, 47.9254



108.1100, -0.0542, 17.4435



0.0000, 0.0000, 0.0000



128.0000, 0.0000, 0.0000

Same Dimension

The Same Dimension uses a secret algorithm to generate beautiful new colors.



136.7460, -0.8608, 89.6768



124.7860, -1.3735, 114.1977



146.3080, -30.2248, 81.2909



112.0440, -0.0217, 6.9774



61.8560, -0.9150, 107.1203



18.7960, -0.3924, 32.6279

Inverse Universe

The Inverse Universe completely reimagines the original color for something new.



136.7460, -0.8608, 89.6768



124.7860, -1.3735, 114.1977



177.6920, 30.2248, -81.2909



112.0440, -0.0217, 6.9774



61.8560, -0.9150, 107.1203



18.7960, -0.3924, 32.6279

Previews

White Background



This preview shows how the YUV color 136.7460, -0.8608, 89.6768 looks on a white background.

Color Contrast Check

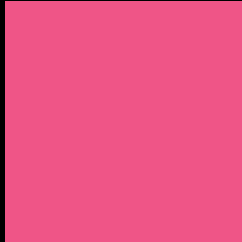
Large Text (above 18pt) WCAG AA ✓ Pass

Any Text WCAG AA × Fail

Large Text (above 18pt) WCAG AAA × Fail

Any Text WCAG AAA × Fail

Black Background



This preview shows how the YUV color 136.7460, -0.8608, 89.6768 looks on a black background.

Color Contrast Check

Large Text (above 18pt) WCAG AA ✓ Pass

Any Text WCAG AA ✓ Pass

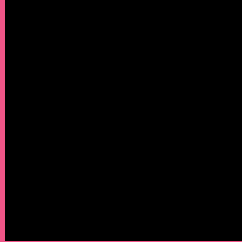
Large Text (above 18pt) WCAG AAA ✓ Pass

Any Text WCAG AAA × Fail

If you want to check with other color combinations, try the [Color Contrast Checker](#).

YUV 136.7460, -0.8608, 89.6768

Background



This preview shows how black text looks on a background with the YUV color 136.7460, -0.8608, 89.6768.



This preview shows how white text looks on a background with the YUV color 136.7460, -0.8608,

89.6768.

Color Blindness Simulation

Color vision deficiency is a very complex topic, and I could not describe the different causes any better than Wikipedia does, so if you want to learn more, you should check out their [article about color blindness](#).

Dichromacy



Original Color

136.7460, -0.8608, 89.6768

Protanopia

141.8820, 12.3832, -5.1585

Deuteranopia

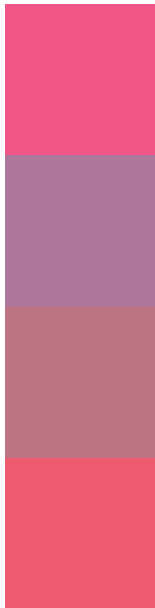
142.2640, -7.0322, 15.5545



Tritanopia

136.6260, -19.0426, 88.0280

Trichromacy



Original Color

136.7460, -0.8608, 89.6768

Protanomaly

139.8370, 7.4754, 29.0840

Deuteranomaly

140.1240, -4.4981, 42.8643

Tritanomaly

136.6460, -12.6435, 88.8875

Monochromacy



Original Color

136.7460, -0.8608, 89.6768

Achromatopsia

137.0000, 0.0000, 0.0000

Achromatomaly

136.7960, -0.3924, 32.6279

CSS Examples

Text

The CSS property to change the color of the text to YUV 136.7460, -0.8608, 89.6768 is called "color". The color property can be set on classes, ids or directly on the HTML element.

This example shows how text in the color `rgb(239, 85, 135)` looks like.

```
.text, #text, p{  
    color:rgb(239, 85, 135)  
}
```

If you want to add a text shadow in that color use the text-shadow property, you can generate a text shadow directly with our [CSS Text Shadow Generator](#).

Here you see how black text with a 4 pixel rgb(239, 85, 135) colored shadow looks like.

```
.shadow{ text-shadow: 4px 4px 2px rgb(239, 85, 135) }
```

Border

The CSS property to change the border of an element to YUV 136.7460, -0.8608, 89.6768 is called "border". The border property can be set on classes, ids or directly on the HTML element.

This example shows the color as border, it can be applied via the CSS property "border" or "border-color".

```
.border, #border, table{ border:4px solid rgb(239, 85, 135) }
```


If only the border color should be changed use the property `border-color`.

```
.border{ border-color:rgb(239, 85, 135) }
```

If you want to add a box shadow in that color use:

Here you see how a box with a 4 pixel `rgb(239, 85, 135)` colored shadow looks like.

```
.boxshadow{ -moz-box-shadow:4px 4px 4px  
4px rgb(239, 85, 135); -webkit-box-  
shadow:4px 4px 4px 4px rgb(239, 85, 135);  
box-shadow:4px 4px 4px 4px rgb(239, 85,  
135) }
```

Background

The CSS property to change the background color of an element to YUV 136.7460, -0.8608, 89.6768 is called "background". The background property can be set on classes, ids or directly on the HTML element.

```
.background, #background, body{  
background: rgb(239, 85, 135) }
```

If only the background color should be changed can be used:

```
.background{ background-color: rgb(239, 85,  
135) }
```

This example shows the color as background, it is applied via the CSS property "background".

To optimize and compress your CSS code, you can use our [online CSS compressor and optimizer](#) based on csstidy. If you want to create a linear or radial gradient as background or border, check our [CSS Gradient Generator](#).

Hey! You found this booklet interesting? Support Converting Colors with the new Membership Option!

The pro membership hides all ads, plus gives you double the colors in the color bucket, and more awesome pro features!

[Learn more, Memberships starting at \\$2.50/m!](#)

**Follow me
on Twitter!**

@ConvertingColor