

Converting Colors

YUV(137.3970, -12.0277,
31.2238)

Have a look what the booklet for
YUV(137.3970, -12.0277, 31.2238)
contains.

YUV(137.3970, -12.0277, 31.2238)	3
<i>Conversions</i>	4
<i>Details</i>	6
<i>Harmonies</i>	12
<i>Previews</i>	24
<i>Color Blindness Simulation</i>	28
<i>CSS Examples</i>	31

Color

**YUV(137.3970, -12.0277,
31.2238)**

Conversions

Conversions Part 1

Format	Color
Hex	AD7C71
RGB	173, 124, 113
RGB Percent	68%, 49%, 44%
CMY	0.3216, 0.5137, 0.5569
CMYK	0.00, 0.28, 0.35, 0.32
HSL	11°, 27%, 56%
HSV	11°, 35%, 68%
XYZ	27.4219, 24.4918, 18.9049
YIQ	137.3970, 32.7350, 6.9670

Conversions

Conversions Part 2

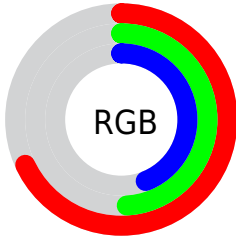
Format	Color
R_{YB}	173, 126, 113
Decimal	11369585
CIE Lab	56.58, 17.56, 13.56
CIE LCh	57, 22.181, 37.677
Yxy	24.4918, 0.3872, 0.3458
Android (android.graphics.Color)	4289559665 (0xFFAD7C71)
YUV	137.3970, -12.0277, 31.2238
Hunter-Lab	49.4892, 12.3005, 11.9936

Details

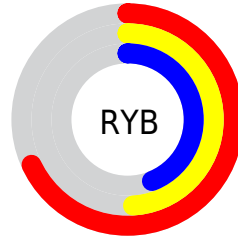
The YUV color $137.3970, -12.0277, 31.2238$ is a dark color, and the websafe version is hex 996666 . A complement of this color would be $148.6030, 12.0277, -31.2238$, and the grayscale version is $137.0000, 0.0000, 0.0000$.

A 20% lighter version of the original color is $191.4790, -13.0541, 33.7829$, and $87.0160, -10.8539, 28.0500$ is the 20% darker color. If you saturate the color by 10%, you get $127.2410, -15.4018, 40.1306$, and if you desaturate by 10%, it is $147.5530, -8.6536, 22.3170$.

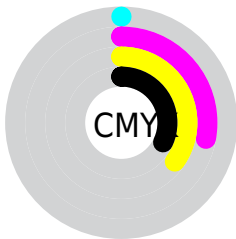
Distribution



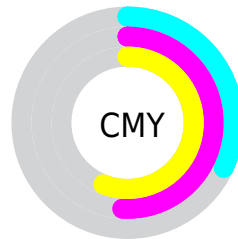
- Red (68%)
- Green (49%)
- Blue (44%)



- Red (68%)
- Yellow (49%)
- Blue (44%)



- Cyan (0%)
- Magenta (28%)
- Yellow (35%)
- Black (32%)



- Cyan (32%)
- Magenta (51%)
- Yellow (56%)

Brightness & Saturation Gradients

These gradients show how the YUV color 137.3970, -12.0277, 31.2238 changes by changing the brightness by 10 percent. The first figure shows a shift by +10% for each color and the second figure -10%.

Similar to the brightness gradients but the following saturation gradients show a change of the YUV color 137.3970, -12.0277, 31.2238 by changing the saturation by 10% instead.

■ 137.3970,
-12.0277, 31.2238

■ 137.3970,
-12.0277, 31.2238

■ 255.0000, 0.0000,
0.0000

■ 111.9130,
-11.2961, 29.8943

■ 191.4790,
-13.0541, 33.7829

■ 87.0160, -10.8539,
28.0500

■ 217.8810,
-12.7593, 32.5534

■ 63.2330, -9.9749,
26.1057

■ 238.0960, -8.9213,
14.8248

■ 40.4500, -9.0959,
24.1613

■ 254.2020, -3.0576,
0.6998

■ 18.1510, -8.9484,
23.5466

■ 2.0930, -1.0318,
4.3034

■ 0.0000, 0.0000,

0.0000

■ 137.3970,
-12.0277, 31.2238

■ 137.3970,
-12.0277, 31.2238

■ 127.2410,
-15.4018, 40.1306

■ 147.5530, -8.6536,
22.3170

■ 116.9710,
-19.2127, 49.1374

■ 157.8230, -4.8427,
13.3102

■ 106.8150,
-22.5868, 58.0442

■ 167.9790, -1.4686,
4.4034

■ 96.0720, -25.6715,
67.4659

■ 178.7220, 1.6161,
-5.0182

■ 85.8020, -29.4824,
76.4726

■ 188.9920, 5.4269,
-14.0250

■ 75.6460, -32.8565,
85.3795

■ 199.1480, 8.8010,
-22.9318

■ 70.5110, -34.7619,
89.8829

■ 209.3040, 12.1751,
-31.8386

■ 219.4600, 15.5492,
-40.7454

■ 228.1340, 13.2449,
-48.3525

Harmonies

Analogous

The Analogous color harmony consists of three colors that are next to each other on the color wheel.



138.5740, -3.7340, 31.0686



137.3970, -12.0277, 31.2238



136.2620, -17.3842, 22.5722

Triad

The Triadic color harmony groups three colors that are evenly spaced from another and form a triangle on the color wheel.



137.3970, -12.0277, 31.2238



128.9940, -4.4340, -24.5507



135.2490, 19.1042, -14.2504

Complementary

The Complementary color scheme is a pair of colors which are on the opposite of each other on the color wheel.



137.3970, -12.0277, 31.2238



148.6030, 12.0277, -31.2238

Split Complementary

Split-complementary colors differ from the complementary color scheme. The scheme consists of three colors, the original color and two neighbors of the complement color.



130.6550, 19.8901, -33.0234



137.3970, -12.0277, 31.2238



127.0660, 6.3765, -38.6459

Square

The Square scheme is like the rectangle color scheme, but the four colors are evenly spaced on the color wheel.



137.3970, -12.0277, 31.2238



132.1010, -13.3608, -7.9816



126.5630, 15.9914, -42.5898



138.0020, 13.8030, 6.1372

Rectangle

The Rectangle color scheme consists of four colors that form a rectangle on the color wheel.



137.3970, -12.0277, 31.2238



134.8650, -18.6674, 14.1504



126.5630, 15.9914, -42.5898



133.7320, 19.8521, -20.8130

Sweetspot

The Sweet Spot groups the original color and five complimentary colors.



137.3970, -12.0277, 31.2238



210.9260, -4.4005, 11.4659



136.5260, 12.5587, 31.9877



104.0610, -2.4951, 6.9625



240.0000, 0.0000, 0.0000



112.0000, 0.0000, 0.0000

Same Dimension

The Same Dimension uses a secret algorithm to generate beautiful new colors.



137.3970, -12.0277, 31.2238



168.0850, -18.7759, 49.0375



155.0070, -20.7095, 15.7799



81.8650, -1.9054, 4.5034



61.2860, -30.2140, 77.8022



9.2250, -4.5479, 12.0807

Inverse Universe

The Inverse Universe completely reimagines the original color for something new.



148.6030, 12.0277, -31.2238



185.9150, 18.7759, -49.0375



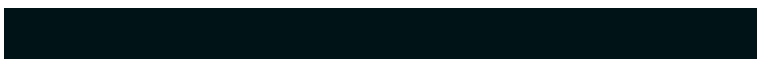
130.9930, 20.7095, -15.7799



83.1350, 1.9054, -4.5034



89.3010, 29.9246, -78.3170



13.7750, 4.5479, -12.0807

Previews

White Background



This preview shows how the YUV color 137.3970, -12.0277, 31.2238 looks on a white background.

Color Contrast Check

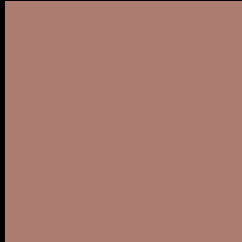
Large Text (above 18pt) WCAG AA ✓ Pass

Any Text WCAG AA × Fail

Large Text (above 18pt) WCAG AAA × Fail

Any Text WCAG AAA × Fail

Black Background



This preview shows how the YUV color 137.3970, -12.0277, 31.2238 looks on a black background.

Color Contrast Check

Large Text (above 18pt) WCAG AA ✓ Pass

Any Text WCAG AA ✓ Pass

Large Text (above 18pt) WCAG AAA ✓ Pass

Any Text WCAG AAA × Fail

If you want to check with other color combinations, try the [Color Contrast Checker](#).

YUV 137.3970, -12.0277, 31.2238

Background



This preview shows how black text looks on a background with the YUV color 137.3970, -12.0277, 31.2238.



This preview shows how white text looks on a background with the YUV color 137.3970, -12.0277,

Color Blindness Simulation

Color vision deficiency is a very complex topic, and I could not describe the different causes any better than Wikipedia does, so if you want to learn more, you should check out their [article about color blindness](#).

Dichromacy



Original Color

137.3970, -12.0277, 31.2238

Protanopia

135.8560, -8.3100, 5.3883

Deuteranopia

136.9070, -12.2792, 18.4986



Tritanopia

138.2860, -3.5920, 32.1982

Trichromacy



Original Color

137.3970, -12.0277, 31.2238

Protanomaly

136.5690, -9.6475, 14.4100

Deuteranomaly

136.6410, -12.1480, 23.1168

Tritanomaly

137.7760, -6.7916, 31.7684

Monochromacy



Original Color

137.3970, -12.0277, 31.2238

Achromatopsia

137.0000, 0.0000, 0.0000

Achromatomaly

136.9260, -4.4005, 11.4659

CSS Examples

Text

The CSS property to change the color of the text to YUV 137.3970, -12.0277, 31.2238 is called "color". The color property can be set on classes, ids or directly on the HTML element.

This example shows how text in the color `rgb(173, 124, 113)` looks like.

```
.text, #text, p{  
    color:rgb(173, 124, 113)  
}
```

If you want to add a text shadow in that color use the text-shadow property, you can generate a text shadow directly with our [CSS Text Shadow Generator](#).

Here you see how black text with a 4 pixel rgb(173, 124, 113) colored shadow looks like.

```
.shadow{ text-shadow: 4px 4px 2px rgb(173, 124, 113) }
```

Border

The CSS property to change the border of an element to YUV 137.3970, -12.0277, 31.2238 is called "border".

The border property can be set on classes, ids or directly on the HTML element.

This example shows the color as border, it can be applied via the CSS property "border" or "border-color".

```
.border, #border, table{ border:4px solid rgb(173, 124, 113) }
```


If only the border color should be changed use the property `border-color`.

```
.border{ border-color:rgb(173, 124, 113) }
```

If you want to add a box shadow in that color use:

Here you see how a box with a 4 pixel `rgb(173, 124, 113)` colored shadow looks like.

```
.boxshadow{ -moz-box-shadow:4px 4px 4px  
4px rgb(173, 124, 113); -webkit-box-  
shadow:4px 4px 4px 4px rgb(173, 124, 113);  
box-shadow:4px 4px 4px 4px rgb(173, 124,  
113) }
```

Background

The CSS property to change the background color of an element to YUV 137.3970, -12.0277, 31.2238 is called "background". The background property can be set on classes, ids or directly on the HTML element.

```
.background, #background, body{  
background: rgb(173, 124, 113) }
```

If only the background color should be changed can be used:

```
.background{ background-color: rgb(173,  
124, 113) }
```

This example shows the color as background, it is applied via the CSS property "background".

To optimize and compress your CSS code, you can use our [online CSS compressor and optimizer](#) based on csstidy. If you want to create a linear or radial gradient as background or border, check our [CSS Gradient Generator](#).

Hey! You found this booklet interesting? Support Converting Colors with the new Membership Option!

The pro membership hides all ads, plus gives you double the colors in the color bucket, and more awesome pro features!

[Learn more, Memberships starting at \\$2.50/m!](#)

**Follow me
on Twitter!**

@ConvertingColor