

# Converting Colors

YUV(137.6240, 4.1294, 75.7518)

Have a look what the booklet for  
YUV(137.6240, 4.1294, 75.7518)  
contains.

<b>YUV(137.6240, 4.1294, 75.7518)</b> .....	3
<b><i>Conversions</i></b> .....	4
<b><i>Details</i></b> .....	6
<b><i>Harmonies</i></b> .....	12
<b><i>Previews</i></b> .....	24
<b><i>Color Blindness Simulation</i></b> .....	28
<b><i>CSS Examples</i></b> .....	31

# Color

**YUV(137.6240, 4.1294,  
75.7518)**

# Conversions

## Conversions Part 1

<b>Format</b>	<b>Color</b>
Hex	E05C92
RGB	224, 92, 146
RGB Percent	88%, 36%, 57%
CMY	0.1216, 0.6392, 0.4275
CMYK	0.00, 0.59, 0.35, 0.12
HSL	335°, 68%, 62%
HSV	335°, 59%, 88%
XYZ	39.7559, 25.5769, 30.0356
YIQ	137.6240, 61.3380, 44.7780

# Conversions

## Conversions Part 2

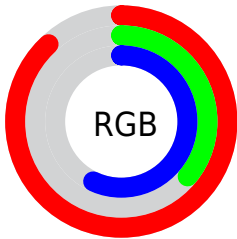
<b>Format</b>	<b>Color</b>
R <sub>Y</sub> B	224, 92, 146
Decimal	14703762
CIE Lab	57.63, 56.55, -3.24
CIE LCh	58, 56.639, 356.721
Yxy	25.5769, 0.4169, 0.2682
Android (android.graphics.Color)	4292893842 (0xFFE05C92)
YUV	137.6240, 4.1294, 75.7518
Hunter-Lab	50.5736, 51.8150, 0.1893

# Details

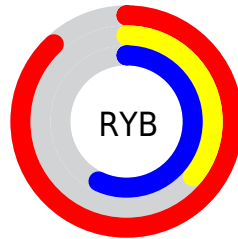
The YUV color **137.6240, 4.1294, 75.7518** is a light color, and the websafe version is hex **FF6699**. The color can be described as light muted rose. A complement of this color would be **178.3760, -4.1294, -75.7518**, and the grayscale version is **138.0000, 0.0000, 0.0000**.

A 20% lighter version of the original color is **185.9210, 6.9409, 60.5823**, and **79.6500, 8.0605, 74.8520** is the 20% darker color. If you saturate the color by 10%, you get **123.2280, 4.8176, 88.3770**, and if you desaturate by 10%, it is **152.0200, 3.4411, 63.1265**.

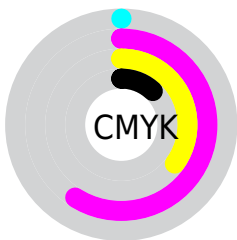
# Distribution



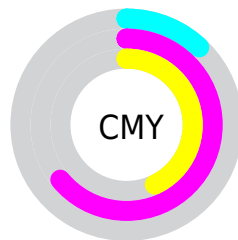
- Red (88%)
- Green (36%)
- Blue (57%)



- Red (88%)
- Yellow (36%)
- Blue (57%)



- Cyan (0%)
- Magenta (59%)
- Yellow (35%)
- Black (12%)



- Cyan (12%)
- Magenta (64%)
- Yellow (43%)

# Brightness & Saturation Gradients

These gradients show how the YUV color 137.6240, 4.1294, 75.7518 changes by changing the brightness by 10 percent. The first figure shows a shift by +10% for each color and the second figure -10%.

Similar to the brightness gradients but the following saturation gradients show a change of the YUV color 137.6240, 4.1294, 75.7518 by changing the saturation by 10% instead.



■ 137.6240, 4.1294,  
75.7518

■ 137.6240, 4.1294,  
75.7518

■ 255.0000, 0.0000,  
0.0000

■ 109.2540, 5.2978,  
74.3222

■ 185.9210, 6.9409,  
60.5823

■ 79.6500, 8.0605,  
74.8520

■ 205.5490, 11.0683,  
43.3685

■ 48.8720, 11.4021,  
76.4113

■ 225.0630, 14.7589,  
26.2547

■ 37.9920, 5.9199,  
61.3970

■ 242.6730, 6.0772,  
10.8108

■ 26.9270, 1.0220,  
45.6680

■ 16.6730, -7.2338,  
33.6128

■ 2.3920, -1.1793,

4.9182

■ 0.0000, 0.0000,  
0.0000

■ 137.6240, 4.1294,  
75.7518

■ 137.6240, 4.1294,  
75.7518

■ 123.2280, 4.8176,  
88.3770

■ 152.0200, 3.4411,  
63.1265

■ 108.2450, 5.7952,  
101.5171

■ 167.0030, 2.4635,  
49.9864

■ 93.7350, 6.0466,  
114.2424

■ 181.5130, 2.2121,  
37.2611

■ 78.7520, 7.0243,  
127.3825

■ 196.4960, 1.2345,  
24.1210

■ 77.4640, 7.1662,  
128.5121

■ 210.8920, 0.5462,  
11.4957

■ 225.2880, -0.1420,  
-1.1296

■ 240.3850, -0.6828,  
-14.3696

■ 245.3890, 3.2592,  
-18.7582

■ 245.7310, 4.5696,  
-19.0581

# Harmonies

## Analogous

The Analogous color harmony consists of three colors that are next to each other on the color wheel.



141.9310, 25.1770, 44.7875



137.6240, 4.1294, 75.7518



135.5710, -19.0155, 79.3062

# Triad

The Triadic color harmony groups three colors that are evenly spaced from another and form a triangle on the color wheel.



137.6240, 4.1294, 75.7518



128.3160, -43.0468, -6.4161



117.3530, 51.0980, -102.9186

# Complementary

The Complementary color scheme is a pair of colors which are on the opposite of each other on the color wheel.



137.6240, 4.1294, 75.7518



178.3760, -4.1294, -75.7518

# Split Complementary

Split-complementary colors differ from the complementary color scheme. The scheme consists of three colors, the original color and two neighbors of the complement color.



115.8420, 32.6159, -101.5934



137.6240, 4.1294, 75.7518



116.9300, -17.7135, -58.6976

# Square

The Square scheme is like the rectangle color scheme, but the four colors are evenly spaced on the color wheel.



137.6240, 4.1294, 75.7518



132.4950, -51.0230, 32.0149



110.0280, 10.3392, -96.4946



112.7200, 61.2700, -98.8554



# Rectangle

The Rectangle color scheme consists of four colors that form a rectangle on the color wheel.



137.6240, 4.1294, 75.7518



135.4330, -33.2445, 69.7803



110.0280, 10.3392, -96.4946



117.2730, 45.7144, -102.8484

# Sweetspot

The Sweet Spot groups the original color and five complimentary colors.



137.6240, 4.1294, 75.7518



224.9200, 1.5184, 26.3802



130.0710, 46.3070, 34.1407



109.0390, 0.9668, 16.6288



0.0000, 0.0000, 0.0000



128.0000, 0.0000, 0.0000



# Same Dimension

The Same Dimension uses a secret algorithm to generate beautiful new colors.



137.6240, 4.1294, 75.7518



136.5550, 5.6424, 103.8763



137.9250, -22.6410, 75.4878



104.8590, 0.5625, 6.2627



60.8320, 5.5058, 101.0023



16.6320, 1.6604, 27.5097



# Inverse Universe

The Inverse Universe completely reimagines the original color for something new.



137.6240, 4.1294, 75.7518



136.5550, 5.6424, 103.8763



178.0750, 22.6410, -75.4878



104.8590, 0.5625, 6.2627



60.8320, 5.5058, 101.0023



16.6320, 1.6604, 27.5097



# Previews

## White Background



This preview shows how the YUV color 137.6240, 4.1294, 75.7518 looks on a white background.

## Color Contrast Check

Large Text (above 18pt) WCAG AA ✓ Pass

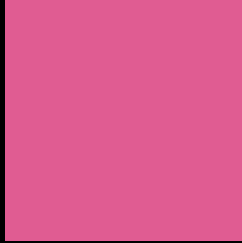
Any Text WCAG AA ✗ Fail

Large Text (above 18pt) WCAG AAA ✗ Fail

Any Text WCAG AAA ✗ Fail



# Black Background



This preview shows how the YUV color 137.6240, 4.1294, 75.7518 looks on a black background.

## Color Contrast Check

Large Text (above 18pt) WCAG AA ✓ Pass

Any Text WCAG AA ✓ Pass

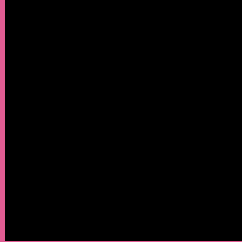
Large Text (above 18pt) WCAG AAA ✓ Pass

Any Text WCAG AAA × Fail

If you want to check with other color combinations, try the [Color Contrast Checker](#).

# YUV 137.6240, 4.1294, 75.7518

## Background



This preview shows how black text looks on a background with the YUV color 137.6240, 4.1294, 75.7518.



This preview shows how white text looks on a background with the YUV color 137.6240, 4.1294,



# Color Blindness Simulation

Color vision deficiency is a very complex topic, and I could not describe the different causes any better than Wikipedia does, so if you want to learn more, you should check out their [article about color blindness](#).

## Dichromacy



### Original Color

137.6240, 4.1294, 75.7518

### Protanopia

139.2390, 17.6302, -8.1026

### Deuteranopia

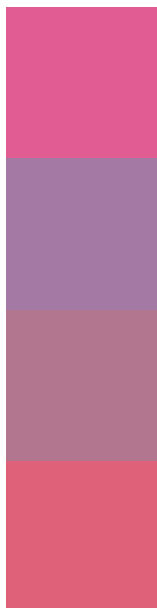
139.9520, -0.4693, 10.5661



## Tritanopia

136.9770, -14.7787, 73.6882

# Trichromacy



## Original Color

137.6240, 4.1294, 75.7518

## Protanomaly

138.7590, 12.4438, 22.1364

## Deuteranomaly

139.2630, 1.3493, 33.9723

## Tritanomaly

137.1110, -7.9427, 74.4477

# Monochromacy



## Original Color

137.6240, 4.1294, 75.7518

## Achromatopsia

138.0000, 0.0000, 0.0000

## Achromatomaly

137.6320, 1.6604, 27.5097

# CSS Examples

## Text

The CSS property to change the color of the text to YUV 137.6240, 4.1294, 75.7518 is called "color". The color property can be set on classes, ids or directly on the HTML element.

This example shows how text in the color `rgb(224, 92, 146)` looks like.

```
.text, #text, p{  
    color:rgb(224, 92, 146)  
}
```

If you want to add a text shadow in that color use the text-shadow property, you can generate a text shadow directly with our [CSS Text Shadow Generator](#).

Here you see how black text with a 4 pixel rgb(224, 92, 146) colored shadow looks like.

```
.shadow{ text-shadow: 4px 4px 2px rgb(224, 92, 146) }
```

## Border

The CSS property to change the border of an element to YUV 137.6240, 4.1294, 75.7518 is called "border". The border property can be set on classes, ids or directly on the HTML element.

This example shows the color as border, it can be applied via the CSS property "border" or "border-color".

```
.border, #border, table{ border:4px solid rgb(224, 92, 146) }
```



If only the border color should be changed use the property border-color.

```
.border{ border-color:rgb(224, 92, 146) }
```

If you want to add a box shadow in that color use:

Here you see how a box with a 4 pixel rgb(224, 92, 146) colored shadow looks like.

```
.boxshadow{ -moz-box-shadow:4px 4px 4px  
4px rgb(224, 92, 146); -webkit-box-  
shadow:4px 4px 4px 4px rgb(224, 92, 146);  
box-shadow:4px 4px 4px 4px rgb(224, 92,  
146) }
```

# Background

The CSS property to change the background color of an element to YUV 137.6240, 4.1294, 75.7518 is called "background". The background property can be set on classes, ids or directly on the HTML element.

```
.background, #background, body{  
background: rgb(224, 92, 146) }
```

If only the background color should be changed can be used:

```
.background{ background-color: rgb(224, 92,  
146) }
```

This example shows the color as background, it is applied via the CSS property "background".

To optimize and compress your CSS code, you can use our [online CSS compressor and optimizer](#) based on csstidy. If you want to create a linear or radial gradient as background or border, check our [CSS Gradient Generator](#).

Hey! You found this booklet interesting? Support Converting Colors with the new Membership Option!

The pro membership hides all ads, plus gives you double the colors in the color bucket, and more awesome pro features!

**[Learn more, Memberships starting at \\$2.50/m!](#)**

**Follow me  
on Twitter!**

@ConvertingColor