

Converting Colors

YUV(137.6400, -23.9795,
38.0267)

Have a look what the booklet for
YUV(137.6400, -23.9795, 38.0267)
contains.

YUV(137.6400, -23.9795, 38.0267)	3
<i>Conversions</i>	4
<i>Details</i>	6
<i>Harmonies</i>	12
<i>Previews</i>	24
<i>Color Blindness Simulation</i>	28
<i>CSS Examples</i>	31

Color

**YUV(137.6400, -23.9795,
38.0267)**

Conversions

Conversions Part 1

Format	Color
Hex	B57D59
RGB	181, 125, 89
RGB Percent	71%, 49%, 35%
CMY	0.2902, 0.5098, 0.6510
CMYK	0.00, 0.31, 0.51, 0.29
HSL	23°, 38%, 53%
HSV	23°, 51%, 71%
XYZ	28.1928, 25.2123, 12.8317
YIQ	137.6400, 44.9320, 0.6760

Conversions

Conversions Part 2

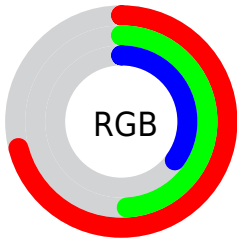
Format	Color
R_{YB}	181, 148, 89
Decimal	11894105
CIE _{Lab}	57.28, 17.59, 28.29
CIE _{LCh}	57, 33.312, 58.136
Yxy	25.2123, 0.4256, 0.3806
Android (android.graphics.Color)	4290084185 (0xFFB57D59)
YUV	137.6400, -23.9795, 38.0267
Hunter-Lab	50.2118, 12.3532, 19.9966

Details

The YUV color $137.6400, -23.9795, 38.0267$ is a dark color, and the websafe version is hex $CC9966$. A complement of this color would be $132.3600, 23.9795, -38.0267$, and the grayscale version is $138.0000, 0.0000, 0.0000$.

A 20% lighter version of the original color is $191.7930, -26.0269, 41.4005$, and $86.7750, -22.0741, 33.5233$ is the 20% darker color. If you saturate the color by 10%, you get $129.1310, -28.6586, 45.4891$, and if you desaturate by 10%, it is $146.1490, -19.3005, 30.5643$.

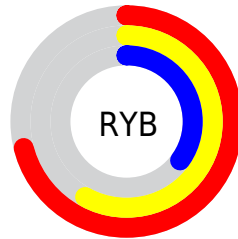
Distribution



Red (71%)

Green (49%)

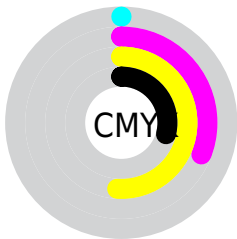
Blue (35%)



Red (71%)

Yellow (58%)

Blue (35%)

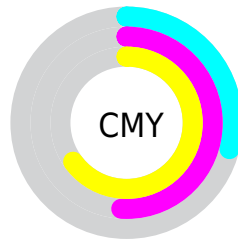


Cyan (0%)

Magenta (31%)

Yellow (51%)

Black (29%)



Cyan (29%)

Magenta (51%)

Yellow (65%)

Brightness & Saturation Gradients

These gradients show how the YUV color 137.6400, -23.9795, 38.0267 changes by changing the brightness by 10 percent. The first figure shows a shift by +10% for each color and the second figure -10%.

Similar to the brightness gradients but the following saturation gradients show a change of the YUV color 137.6400, -23.9795, 38.0267 by changing the saturation by 10% instead.

■ 137.6400,
-23.9795, 38.0267

■ 137.6400,
-23.9795, 38.0267

■ 255.0000, 0.0000,
0.0000

■ 111.8570,
-23.1005, 36.0824

■ 191.7930,
-26.0269, 41.4005

■ 86.7750, -22.0741,
33.5233

■ 215.5040,
-24.4055, 34.6380

■ 62.8070, -20.6109,
30.8643

■ 235.6050,
-21.0043, 17.0094

■ 40.0240, -19.7318,
28.9200

■ 251.1240,
-14.8511, 3.3993

■ 19.9230, -9.8220,
23.7465

■ 254.4300, -2.1840,
0.4999

■ 4.4850, -2.2111,
9.2217

■ 0.0000, 0.0000,

0.0000

■ 137.6400,
-23.9795, 38.0267

■ 137.6400,
-23.9795, 38.0267

■ 129.1310,
-28.6586, 45.4891

■ 146.1490,
-19.3005, 30.5643

■ 120.6220,
-33.3376, 52.9515

■ 154.6580,
-14.6214, 23.1019

■ 112.1130,
-38.0167, 60.4139

■ 163.1670, -9.9423,
15.6395

■ 103.6040,
-42.6958, 67.8763

■ 171.6760, -5.2633,
8.1771

■ 95.7960, -47.2274,
74.7239

■ 180.2990, -0.1474,
0.6148

■ 188.8080, 4.5317,
-6.8476

■ 197.3170, 9.2107,
-14.3100

■ 205.8260, 13.8898,
-21.7724

■ 214.3350, 18.5688,
-29.2348

Harmonies

Analogous

The Analogous color harmony consists of three colors that are next to each other on the color wheel.



139.1540, -13.3869, 47.2229



137.6400, -23.9795, 38.0267



135.4930, -27.8510, 19.7386

Triad

The Triadic color harmony groups three colors that are evenly spaced from another and form a triangle on the color wheel.



137.6400, -23.9795, 38.0267



121.0480, 6.8783, -59.6781



139.7050, 24.3024, -1.4953

Complementary

The Complementary color scheme is a pair of colors which are on the opposite of each other on the color wheel.



137.6400, -23.9795, 38.0267



132.3600, 23.9795, -38.0267

Split Complementary

Split-complementary colors differ from the complementary color scheme. The scheme consists of three colors, the original color and two neighbors of the complement color.



132.2060, 30.9574, -36.1377



137.6400, -23.9795, 38.0267



107.9200, 27.6474, -94.6458

Square

The Square scheme is like the rectangle color scheme, but the four colors are evenly spaced on the color wheel.



137.6400, -23.9795, 38.0267



128.2400, -10.9643, -30.0285



117.9470, 33.5501, -74.4985



141.1340, 13.7379, 27.0695

Rectangle

The Rectangle color scheme consists of four colors that form a rectangle on the color wheel.



137.6400, -23.9795, 38.0267



133.5620, -25.9131, 4.7691



117.9470, 33.5501, -74.4985



137.7360, 27.2452, -12.0465

Sweetspot

The Sweet Spot groups the original color and five complimentary colors.



137.6400, -23.9795, 38.0267



217.9820, -9.3581, 14.9248



123.0060, 11.3360, 50.8607



106.9750, -5.4107, 8.7919



245.0000, 0.0000, 0.0000



117.0000, 0.0000, 0.0000

Same Dimension

The Same Dimension uses a secret algorithm to generate beautiful new colors.



137.6400, -23.9795, 38.0267



166.9280, -37.4325, 59.6991



164.0550, -37.0021, 14.8608



85.0390, -2.4842, 3.4738



80.9670, -39.9167, 63.1729



13.6440, -6.7265, 10.8362

Inverse Universe

The Inverse Universe completely reimagines the original color for something new.



132.3600, 23.9795, -38.0267



159.0720, 37.4325, -59.6991



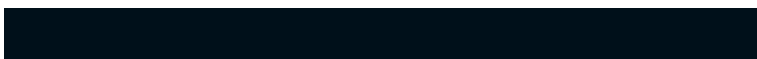
105.9450, 37.0021, -14.8608



84.5480, 2.1948, -3.9886



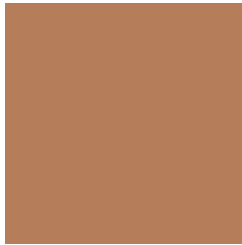
72.0330, 39.9167, -63.1729



12.3560, 6.7265, -10.8362

Previews

White Background



This preview shows how the YUV color 137.6400, -23.9795, 38.0267 looks on a white background.

Color Contrast Check

Large Text (above 18pt) WCAG AA ✓ Pass

Any Text WCAG AA × Fail

Large Text (above 18pt) WCAG AAA × Fail

Any Text WCAG AAA × Fail

Black Background



This preview shows how the YUV color 137.6400, -23.9795, 38.0267 looks on a black background.

Color Contrast Check

Large Text (above 18pt) WCAG AA ✓ Pass

Any Text WCAG AA ✓ Pass

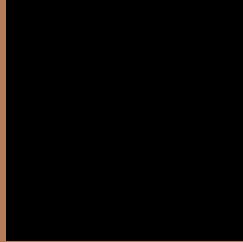
Large Text (above 18pt) WCAG AAA ✓ Pass

Any Text WCAG AAA × Fail

If you want to check with other color combinations, try the [Color Contrast Checker](#).

YUV 137.6400, -23.9795, 38.0267

Background



This preview shows how black text looks on a background with the YUV color 137.6400, -23.9795, 38.0267.



This preview shows how white text looks on a background with the YUV color 137.6400, -23.9795,

Color Blindness Simulation

Color vision deficiency is a very complex topic, and I could not describe the different causes any better than Wikipedia does, so if you want to learn more, you should check out their [article about color blindness](#).

Dichromacy



Original Color

137.6400, -23.9795, 38.0267

Protanopia

136.2730, -20.8406, 11.1616

Deuteranopia

137.1500, -24.2310, 25.3014



Tritanopia

140.1620, -5.5029, 38.4459

Trichromacy



Original Color

137.6400, -23.9795, 38.0267

Protanomaly

136.6980, -22.0361, 21.3129

Deuteranomaly

136.8840, -24.0998, 29.9197

Tritanomaly

139.3270, -12.4862, 38.3012

Monochromacy



Original Color

137.6400, -23.9795, 38.0267

Achromatopsia

138.0000, 0.0000, 0.0000

Achromatomaly

137.7970, -8.7739, 14.2100

CSS Examples

Text

The CSS property to change the color of the text to YUV 137.6400, -23.9795, 38.0267 is called "color". The color property can be set on classes, ids or directly on the HTML element.

This example shows how text in the color `rgb(181, 125, 89)` looks like.

```
.text, #text, p{  
    color:rgb(181, 125, 89)  
}
```

If you want to add a text shadow in that color use the text-shadow property, you can generate a text shadow directly with our [CSS Text Shadow Generator](#).

Here you see how black text with a 4 pixel rgb(181, 125, 89) colored shadow looks like.

```
.shadow{ text-shadow: 4px 4px 2px rgb(181, 125, 89) }
```

Border

The CSS property to change the border of an element to YUV 137.6400, -23.9795, 38.0267 is called "border".

The border property can be set on classes, ids or directly on the HTML element.

This example shows the color as border, it can be applied via the CSS property "border" or "border-color".

```
.border, #border, table{ border:4px solid rgb(181, 125, 89) }
```


If only the border color should be changed use the property `border-color`.

```
.border{ border-color:rgb(181, 125, 89) }
```

If you want to add a box shadow in that color use:

Here you see how a box with a 4 pixel `rgb(181, 125, 89)` colored shadow looks like.

```
.boxshadow{ -moz-box-shadow:4px 4px 4px  
4px rgb(181, 125, 89); -webkit-box-  
shadow:4px 4px 4px 4px rgb(181, 125, 89);  
box-shadow:4px 4px 4px 4px rgb(181, 125,  
89) }
```

Background

The CSS property to change the background color of an element to YUV 137.6400, -23.9795, 38.0267 is called "background". The background property can be set on classes, ids or directly on the HTML element.

```
.background, #background, body{  
background: rgb(181, 125, 89) }
```

If only the background color should be changed can be used:

```
.background{ background-color: rgb(181,  
125, 89) }
```

This example shows the color as background, it is applied via the CSS property "background".

To optimize and compress your CSS code, you can use our [online CSS compressor and optimizer](#) based on csstidy. If you want to create a linear or radial gradient as background or border, check our [CSS Gradient Generator](#).

Hey! You found this booklet interesting? Support Converting Colors with the new Membership Option!

The pro membership hides all ads, plus gives you double the colors in the color bucket, and more awesome pro features!

[Learn more, Memberships starting at \\$2.50/m!](#)

**Follow me
on Twitter!**

@ConvertingColor