

Converting Colors

YUV(137.6770, -20.0538,
38.8713)

Have a look what the booklet for
YUV(137.6770, -20.0538, 38.8713)
contains.

YUV(137.6770, -20.0538, 38.8713)	3
<i>Conversions</i>	4
<i>Details</i>	6
<i>Harmonies</i>	12
<i>Previews</i>	24
<i>Color Blindness Simulation</i>	28
<i>CSS Examples</i>	31

Color

**YUV(137.6770, -20.0538,
38.8713)**

Conversions

Conversions Part 1

Format	Color
Hex	B67B61
RGB	182, 123, 97
RGB Percent	71%, 48%, 38%
CMY	0.2863, 0.5176, 0.6196
CMYK	0.00, 0.32, 0.47, 0.29
HSL	18°, 37%, 55%
HSV	18°, 47%, 71%
XYZ	28.5320, 24.9741, 14.6259
YIQ	137.6770, 43.5100, 4.4220

Conversions

Conversions Part 2

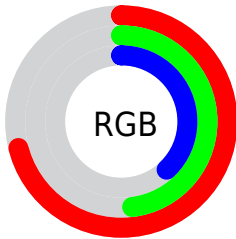
Format	Color
R_{YB}	182, 134, 97
Decimal	11959137
CIE Lab	57.05, 19.92, 23.52
CIE LCh	57, 30.820, 49.745
Yxy	24.9741, 0.4188, 0.3666
Android (android.graphics.Color)	4290149217 (0xFFB67B61)
YUV	137.6770, -20.0538, 38.8713
Hunter-Lab	49.9741, 14.4576, 17.6294

Details

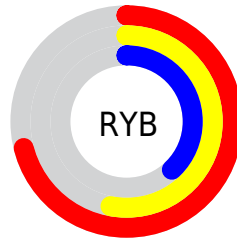
The YUV color **137.6770, -20.0538, 38.8713** is a dark color, and the websafe version is hex **CC9966**. A complement of this color would be **141.3230, 20.0538, -38.8713**, and the grayscale version is **138.0000, 0.0000, 0.0000**.

A 20% lighter version of the original color is **191.9440, -21.6644, 42.1451**, and **86.8120, -18.1483, 34.3679** is the 20% darker color. If you saturate the color by 10%, you get **127.9940, -24.1540, 47.3633**, and if you desaturate by 10%, it is **147.3600, -15.9535, 30.3793**.

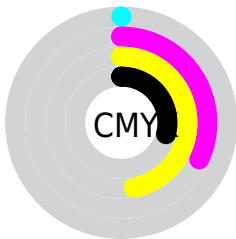
Distribution



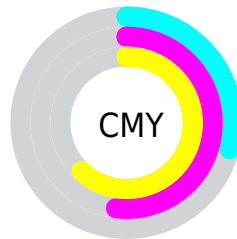
- Red (71%)
- Green (48%)
- Blue (38%)



- Red (71%)
- Yellow (53%)
- Blue (38%)



- Cyan (0%)
- Magenta (32%)
- Yellow (47%)
- Black (29%)



- Cyan (29%)
- Magenta (52%)
- Yellow (62%)

Brightness & Saturation Gradients

These gradients show how the YUV color 137.6770, -20.0538, 38.8713 changes by changing the brightness by 10 percent. The first figure shows a shift by +10% for each color and the second figure -10%.

Similar to the brightness gradients but the following saturation gradients show a change of the YUV color 137.6770, -20.0538, 38.8713 by changing the saturation by 10% instead.

■ 137.6770,
-20.0538, 38.8713

■ 137.6770,
-20.0538, 38.8713

■ 255.0000, 0.0000,
0.0000

■ 111.8940,
-19.1747, 36.9270

■ 191.9440,
-21.6644, 42.1451

■ 86.8120, -18.1483,
34.3679

■ 215.3560,
-19.8955, 34.7678

■ 63.1430, -16.8325,
32.3236

■ 235.4570,
-16.4943, 17.1392

■ 39.7190, -17.1165,
30.0644

■ 252.1500,
-10.9200, 2.4994

■ 18.4610, -9.1013,
25.9057

■ 5.0830, -2.5059,
10.4512

■ 0.0000, 0.0000,

0.0000

■ 137.6770,
-20.0538, 38.8713

■ 137.6770,
-20.0538, 38.8713

■ 127.9940,
-24.1540, 47.3633

■ 147.3600,
-15.9535, 30.3793

■ 118.8980,
-28.5437, 55.3405

■ 156.4560,
-11.5638, 22.4021

■ 109.1010,
-33.0808, 63.9324

■ 166.2530, -7.0267,
13.8101

■ 99.4180, -37.1811,
72.4244

■ 175.9360, -2.9264,
5.3181

■ 90.3220, -41.5707,
80.4016

■ 185.0320, 1.4632,
-2.6591

■ 87.2900, -43.0340,
83.0607

■ 194.7150, 5.5635,
-11.1511

■ 203.8110, 9.9532,
-19.1282

■ 213.6080, 14.4903,
-27.7202

■ 222.6070, 15.9697,
-35.6123

Harmonies

Analogous

The Analogous color harmony consists of three colors that are next to each other on the color wheel.



139.1690, -9.4503, 44.5788



137.6770, -20.0538, 38.8713



135.7970, -25.5359, 23.8570

Triad

The Triadic color harmony groups three colors that are evenly spaced from another and form a triangle on the color wheel.



137.6770, -20.0538, 38.8713



124.5290, 0.7252, -46.0679



137.3620, 24.4715, -9.0875

Complementary

The Complementary color scheme is a pair of colors which are on the opposite of each other on the color wheel.



137.6770, -20.0538, 38.8713



141.3230, 20.0538, -38.8713

Split Complementary

Split-complementary colors differ from the complementary color scheme. The scheme consists of three colors, the original color and two neighbors of the complement color.



129.7170, 29.2265, -40.9708



137.6770, -20.0538, 38.8713



117.5550, 17.9674, -69.7697

Square

The Square scheme is like the rectangle color scheme, but the four colors are evenly spaced on the color wheel.



137.6770, -20.0538, 38.8713



129.4970, -14.0490, -20.6069



119.3130, 28.4397, -68.6805



140.8340, 15.3648, 18.5626

Rectangle

The Rectangle color scheme consists of four colors that form a rectangle on the color wheel.



137.6770, -20.0538, 38.8713



134.1220, -25.2031, 10.4170



119.3130, 28.4397, -68.6805



135.8660, 26.6881, -20.0535

Sweetspot

The Sweet Spot groups the original color and five complimentary colors.



137.6770, -20.0538, 38.8713



219.7370, -7.7583, 15.1397



129.2550, 13.6783, 46.2574



109.3880, -5.1213, 9.3067



247.0000, 0.0000, 0.0000



120.0000, 0.0000, 0.0000

Same Dimension

The Same Dimension uses a secret algorithm to generate beautiful new colors.



137.6770, -20.0538, 38.8713



167.8340, -31.4702, 60.6586



162.3310, -32.2082, 17.2497



86.8650, -1.9054, 4.5034



74.8200, -36.8863, 71.1949



13.6550, -6.7319, 12.5806

Inverse Universe

The Inverse Universe completely reimagines the original color for something new.



141.3230, 20.0538, -38.8713



173.7530, 31.1808, -61.1734



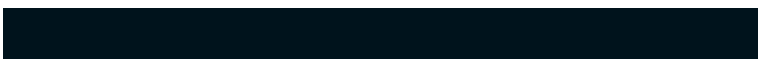
116.6690, 32.2082, -17.2497



87.5480, 2.1948, -3.9886



81.1800, 36.8863, -71.1949



14.3450, 6.7319, -12.5806

Previews

White Background



This preview shows how the YUV color 137.6770, -20.0538, 38.8713 looks on a white background.

Color Contrast Check

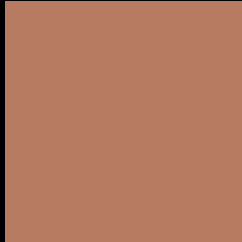
Large Text (above 18pt) WCAG AA ✓ Pass

Any Text WCAG AA × Fail

Large Text (above 18pt) WCAG AAA × Fail

Any Text WCAG AAA × Fail

Black Background



This preview shows how the YUV color 137.6770, -20.0538, 38.8713 looks on a black background.

Color Contrast Check

Large Text (above 18pt) WCAG AA ✓ Pass

Any Text WCAG AA ✓ Pass

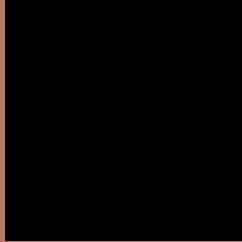
Large Text (above 18pt) WCAG AAA ✓ Pass

Any Text WCAG AAA × Fail

If you want to check with other color combinations, try the [Color Contrast Checker](#).

YUV 137.6770, -20.0538, 38.8713

Background



This preview shows how black text looks on a background with the YUV color 137.6770, -20.0538, 38.8713.



This preview shows how white text looks on a background with the YUV color 137.6770, -20.0538, 38.8713.

Color Blindness Simulation

Color vision deficiency is a very complex topic, and I could not describe the different causes any better than Wikipedia does, so if you want to learn more, you should check out their [article about color blindness](#).

Dichromacy



Original Color

137.6770, -20.0538, 38.8713

Protanopia

136.1140, -16.3252, 9.5470

Deuteranopia

136.7630, -20.5892, 23.8868



Tritanopia

139.7600, -5.7977, 39.6755

Trichromacy



Original Color

137.6770, -20.0538, 38.8713

Protanomaly

136.8380, -17.6681, 20.3131

Deuteranomaly

137.2090, -20.3160, 29.6347

Tritanomaly

138.7940, -10.7444, 39.6457

Monochromacy



Original Color

137.6770, -20.0538, 38.8713

Achromatopsia

138.0000, 0.0000, 0.0000

Achromatomaly

138.1390, -7.4635, 13.9101

CSS Examples

Text

The CSS property to change the color of the text to YUV 137.6770, -20.0538, 38.8713 is called "color". The color property can be set on classes, ids or directly on the HTML element.

This example shows how text in the color `rgb(182, 123, 97)` looks like.

```
.text, #text, p{  
    color:rgb(182, 123, 97)  
}
```

If you want to add a text shadow in that color use the text-shadow property, you can generate a text shadow directly with our [CSS Text Shadow Generator](#).

Here you see how black text with a 4 pixel rgb(182, 123, 97) colored shadow looks like.

```
.shadow{ text-shadow: 4px 4px 2px rgb(182, 123, 97) }
```

Border

The CSS property to change the border of an element to YUV 137.6770, -20.0538, 38.8713 is called "border".

The border property can be set on classes, ids or directly on the HTML element.

This example shows the color as border, it can be applied via the CSS property "border" or "border-color".

```
.border, #border, table{ border:4px solid rgb(182, 123, 97) }
```


If only the border color should be changed use the property `border-color`.

```
.border{ border-color:rgb(182, 123, 97) }
```

If you want to add a box shadow in that color use:

Here you see how a box with a 4 pixel `rgb(182, 123, 97)` colored shadow looks like.

```
.boxshadow{ -moz-box-shadow:4px 4px 4px  
4px rgb(182, 123, 97); -webkit-box-  
shadow:4px 4px 4px 4px rgb(182, 123, 97);  
box-shadow:4px 4px 4px 4px rgb(182, 123,  
97) }
```

Background

The CSS property to change the background color of an element to YUV 137.6770, -20.0538, 38.8713 is called "background". The background property can be set on classes, ids or directly on the HTML element.

```
.background, #background, body{  
background: rgb(182, 123, 97) }
```

If only the background color should be changed can be used:

```
.background{ background-color: rgb(182,  
123, 97) }
```

This example shows the color as background, it is applied via the CSS property "background".

To optimize and compress your CSS code, you can use our [online CSS compressor and optimizer](#) based on csstidy. If you want to create a linear or radial gradient as background or border, check our [CSS Gradient Generator](#).

Hey! You found this booklet interesting? Support Converting Colors with the new Membership Option!

The pro membership hides all ads, plus gives you double the colors in the color bucket, and more awesome pro features!

[Learn more, Memberships starting at \\$2.50/m!](#)

**Follow me
on Twitter!**

@ConvertingColor