

Converting Colors

YUV(137.7530, -18.6122,
43.1896)

Have a look what the booklet for
YUV(137.7530, -18.6122, 43.1896)
contains.

YUV(137.7530, -18.6122, 43.1896)	3
<i>Conversions</i>	4
<i>Details</i>	6
<i>Harmonies</i>	12
<i>Previews</i>	24
<i>Color Blindness Simulation</i>	28
<i>CSS Examples</i>	31

Color

**YUV(137.7530, -18.6122,
43.1896)**

Conversions

Conversions Part 1

Format	Color
Hex	BB7864
RGB	187, 120, 100
RGB Percent	73%, 47%, 39%
CMY	0.2667, 0.5294, 0.6078
CMYK	0.00, 0.36, 0.47, 0.27
HSL	14°, 39%, 56%
HSV	14°, 47%, 73%
XYZ	29.5102, 24.9178, 15.3109
YIQ	137.7530, 46.3520, 7.9840

Conversions

Conversions Part 2

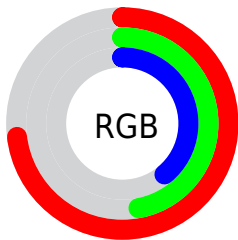
Format	Color
R_{YB}	187, 126, 100
Decimal	12286052
CIE _{Lab}	57.00, 23.93, 21.85
CIE _{LCh}	57, 32.409, 42.395
Yxy	24.9178, 0.4232, 0.3573
Android (android.graphics.Color)	4290476132 (0xFFBB7864)
YUV	137.7530, -18.6122, 43.1896
Hunter-Lab	49.9178, 18.1690, 16.7569

Details

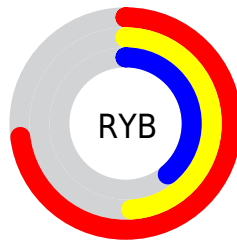
The YUV color **137.7530, -18.6122, 43.1896** is a dark color, and the websafe version is hex **996666**. A complement of this color would be **149.2470, 18.6122, -43.1896**, and the grayscale version is **138.0000, 0.0000, 0.0000**.

A 20% lighter version of the original color is **192.0200, -20.2229, 46.4635**, and **86.8880, -16.7068, 38.6862** is the 20% darker color. If you saturate the color by 10%, you get **127.3690, -22.8599, 52.2964**, and if you desaturate by 10%, it is **148.1370, -14.3645, 34.0829**.

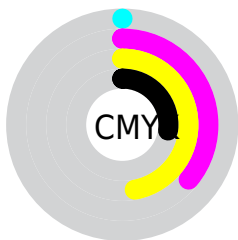
Distribution



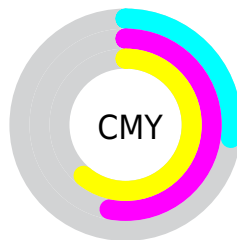
- Red (73%)
- Green (47%)
- Blue (39%)



- Red (73%)
- Yellow (49%)
- Blue (39%)



- Cyan (0%)
- Magenta (36%)
- Yellow (47%)
- Black (27%)



- Cyan (27%)
- Magenta (53%)
- Yellow (61%)

Brightness & Saturation Gradients

These gradients show how the YUV color 137.7530, -18.6122, 43.1896 changes by changing the brightness by 10 percent. The first figure shows a shift by +10% for each color and the second figure -10%.

Similar to the brightness gradients but the following saturation gradients show a change of the YUV color 137.7530, -18.6122, 43.1896 by changing the saturation by 10% instead.

■ 137.7530,
-18.6122, 43.1896

■ 137.7530,
-18.6122, 43.1896

■ 255.0000, 0.0000,
0.0000

■ 111.9700,
-17.7332, 41.2453

■ 192.0200,
-20.2229, 46.4635

■ 86.8880, -16.7068,
38.6862

■ 213.9370,
-17.7169, 36.0123

■ 62.2190, -15.3910,
36.6419

■ 234.0380,
-14.3157, 18.3837

■ 38.7240, -14.6539,
33.5681

■ 252.6060, -9.1728,
2.0995

■ 17.3090, -8.5333,
30.4240

■ 6.8770, -3.3904,
14.1399

■ 0.0000, 0.0000,

0.0000

■ 137.7530,
-18.6122, 43.1896

■ 137.7530,
-18.6122, 43.1896

■ 127.3690,
-22.8599, 52.2964

■ 148.1370,
-14.3645, 34.0829

■ 116.5120,
-26.3814, 61.8180

■ 158.9940,
-10.8430, 24.5613

■ 106.1280,
-30.6291, 70.9247

■ 169.3780, -6.5954,
15.4545

■ 95.1570, -34.5874,
80.5463

■ 180.3490, -2.6371,
5.8329

■ 84.7730, -38.8351,
89.6531

■ 190.6190, 1.1738,
-3.1739

■ 81.1540, -40.0089,
92.8269

■ 201.0030, 5.4215,
-12.2806

■ 211.9740, 9.3798,
-21.9022

■ 222.3580, 13.6275,
-31.0090

■ 231.7330, 11.4706,
-39.2308

Harmonies

Analogous

The Analogous color harmony consists of three colors that are next to each other on the color wheel.



139.2770, -6.5456, 46.2381



137.7530, -18.6122, 43.1896



136.0150, -26.1364, 29.8048

Triad

The Triadic color harmony groups three colors that are evenly spaced from another and form a triangle on the color wheel.



137.7530, -18.6122, 43.1896



125.2260, -3.0694, -42.2942



136.1050, 27.5562, -18.5091

Complementary

The Complementary color scheme is a pair of colors which are on the opposite of each other on the color wheel.



137.7530, -18.6122, 43.1896



149.2470, 18.6122, -43.1896

Split Complementary

Split-complementary colors differ from the complementary color scheme. The scheme consists of three colors, the original color and two neighbors of the complement color.



125.6230, 31.7379, -53.1664



137.7530, -18.6122, 43.1896



116.2620, 15.6468, -72.1438

Square

The Square scheme is like the rectangle color scheme, but the four colors are evenly spaced on the color wheel.



137.7530, -18.6122, 43.1896



129.9060, -17.7017, -15.7036



111.4740, 30.8253, -87.2387



140.1260, 19.1649, 13.0445

Rectangle

The Rectangle color scheme consists of four colors that form a rectangle on the color wheel.



137.7530, -18.6122, 43.1896



134.6990, -26.9666, 16.0500



111.4740, 30.8253, -87.2387



133.1960, 29.4834, -29.9899

Sweetspot

The Sweet Spot groups the original color and five complimentary colors.



137.7530, -18.6122, 43.1896



222.8620, -7.3270, 16.7840



133.7650, 16.8779, 46.6871



110.3280, -4.1057, 10.2363



250.0000, 0.0000, 0.0000



122.0000, 0.0000, 0.0000

Same Dimension

The Same Dimension uses a secret algorithm to generate beautiful new colors.



137.7530, -18.6122, 43.1896



165.5620, -28.8711, 67.0361



162.4070, -30.7667, 21.5681



88.8650, -1.9054, 4.5034



68.3740, -33.7084, 78.6020



13.3780, -6.5954, 15.4545

Inverse Universe

The Inverse Universe completely reimagines the original color for something new.



149.2470, 18.6122, -43.1896



183.4380, 28.8711, -67.0361



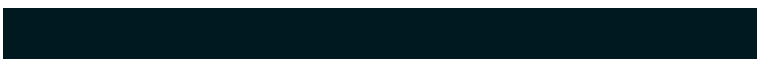
124.5930, 30.7667, -21.5681



90.1350, 1.9054, -4.5034



89.6260, 33.7084, -78.6020



17.6220, 6.5954, -15.4545

Previews

White Background



This preview shows how the YUV color 137.7530, -18.6122, 43.1896 looks on a white background.

Color Contrast Check

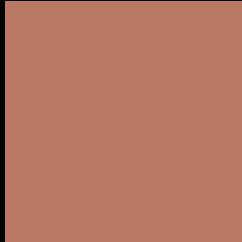
Large Text (above 18pt) WCAG AA ✓ Pass

Any Text WCAG AA × Fail

Large Text (above 18pt) WCAG AAA × Fail

Any Text WCAG AAA × Fail

Black Background



This preview shows how the YUV color 137.7530, -18.6122, 43.1896 looks on a black background.

Color Contrast Check

Large Text (above 18pt) WCAG AA ✓ Pass

Any Text WCAG AA ✓ Pass

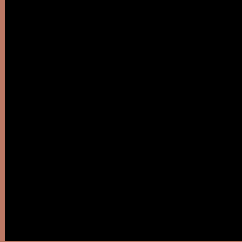
Large Text (above 18pt) WCAG AAA ✓ Pass

Any Text WCAG AAA × Fail

If you want to check with other color combinations, try the [Color Contrast Checker](#).

YUV 137.7530, -18.6122, 43.1896

Background



This preview shows how black text looks on a background with the YUV color 137.7530, -18.6122, 43.1896.



This preview shows how white text looks on a background with the YUV color 137.7530, -18.6122, 43.1896.

Color Blindness Simulation

Color vision deficiency is a very complex topic, and I could not describe the different causes any better than Wikipedia does, so if you want to learn more, you should check out their [article about color blindness](#).

Dichromacy



Original Color

137.7530, -18.6122, 43.1896

Protanopia

136.3850, -13.9938, 8.4324

Deuteranopia

136.8060, -19.1314, 22.9721



Tritanopia

138.8530, -6.8295, 43.9789

Trichromacy



Original Color

137.7530, -18.6122, 43.1896

Protanomaly

137.0060, -15.7790, 21.0427

Deuteranomaly

137.2630, -18.8637, 30.4643

Tritanomaly

138.1150, -10.9027, 43.7491

Monochromacy



Original Color

137.7530, -18.6122, 43.1896

Achromatopsia

138.0000, 0.0000, 0.0000

Achromatomaly

137.6770, -6.7428, 16.0693

CSS Examples

Text

The CSS property to change the color of the text to YUV 137.7530, -18.6122, 43.1896 is called "color". The color property can be set on classes, ids or directly on the HTML element.

This example shows how text in the color `rgb(187, 120, 100)` looks like.

```
.text, #text, p{  
    color:rgb(187, 120, 100)  
}
```

If you want to add a text shadow in that color use the text-shadow property, you can generate a text shadow directly with our [CSS Text Shadow Generator](#).

Here you see how black text with a 4 pixel rgb(187, 120, 100) colored shadow looks like.

```
.shadow{ text-shadow: 4px 4px 2px rgb(187, 120, 100) }
```

Border

The CSS property to change the border of an element to YUV 137.7530, -18.6122, 43.1896 is called "border".

The border property can be set on classes, ids or directly on the HTML element.

This example shows the color as border, it can be applied via the CSS property "border" or "border-color".

```
.border, #border, table{ border:4px solid rgb(187, 120, 100) }
```


If only the border color should be changed use the property `border-color`.

```
.border{ border-color:rgb(187, 120, 100) }
```

If you want to add a box shadow in that color use:

Here you see how a box with a 4 pixel `rgb(187, 120, 100)` colored shadow looks like.

```
.boxshadow{ -moz-box-shadow:4px 4px 4px  
4px rgb(187, 120, 100); -webkit-box-  
shadow:4px 4px 4px 4px rgb(187, 120, 100);  
box-shadow:4px 4px 4px 4px rgb(187, 120,  
100) }
```

Background

The CSS property to change the background color of an element to YUV 137.7530, -18.6122, 43.1896 is called "background". The background property can be set on classes, ids or directly on the HTML element.

```
.background, #background, body{  
background: rgb(187, 120, 100) }
```

If only the background color should be changed can be used:

```
.background{ background-color: rgb(187,  
120, 100) }
```

This example shows the color as background, it is applied via the CSS property "background".

To optimize and compress your CSS code, you can use our [online CSS compressor and optimizer](#) based on csstidy. If you want to create a linear or radial gradient as background or border, check our [CSS Gradient Generator](#).

Hey! You found this booklet interesting? Support Converting Colors with the new Membership Option!

The pro membership hides all ads, plus gives you double the colors in the color bucket, and more awesome pro features!

[Learn more, Memberships starting at \\$2.50/m!](#)

**Follow me
on Twitter!**

@ConvertingColor