

Converting Colors

YUV(137.8600, -14.2280,
36.9568)

Have a look what the booklet for
YUV(137.8600, -14.2280, 36.9568)
contains.

YUV(137.8600, -14.2280, 36.9568)	3
<i>Conversions</i>	4
<i>Details</i>	6
<i>Harmonies</i>	12
<i>Previews</i>	24
<i>Color Blindness Simulation</i>	28
<i>CSS Examples</i>	31

Color

**YUV(137.8600, -14.2280,
36.9568)**

Conversions

Conversions Part 1

Format	Color
Hex	B47A6D
RGB	180, 122, 109
RGB Percent	71%, 48%, 43%
CMY	0.2941, 0.5216, 0.5725
CMYK	0.00, 0.32, 0.39, 0.29
HSL	11°, 32%, 57%
HSV	11°, 39%, 71%
XYZ	28.5422, 24.7265, 17.7363
YIQ	137.8600, 38.7410, 8.2530

Conversions

Conversions Part 2

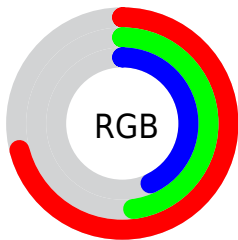
Format	Color
RYB	180, 125, 109
Decimal	11827821
CIELab	56.81, 21.00, 16.30
CIELCh	57, 26.585, 37.826
Yxy	24.7265, 0.4020, 0.3482
Android (android.graphics.Color)	4290017901 (0xFFB47A6D)
YUV	137.8600, -14.2280, 36.9568
Hunter-Lab	49.7257, 15.4378, 13.6603

Details

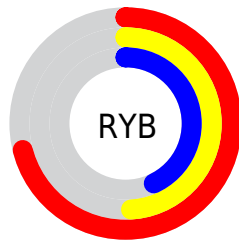
The YUV color **137.8600, -14.2280, 36.9568** is a dark color, and the websafe version is hex **996666**. A complement of this color would be **151.1400, 14.2280, -36.9568**, and the grayscale version is **138.0000, 0.0000, 0.0000**.

A 20% lighter version of the original color is **191.9420, -15.2544, 39.5159**, and **87.1800, -12.9067, 33.1681** is the 20% darker color. If you saturate the color by 10%, you get **127.0030, -17.7495, 46.4784**, and if you desaturate by 10%, it is **148.7170, -10.7065, 27.4352**.

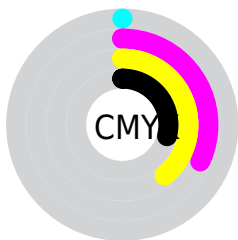
Distribution



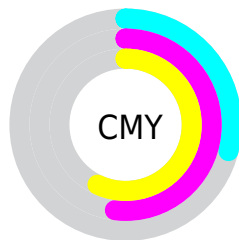
- Red (71%)
- Green (48%)
- Blue (43%)



- Red (71%)
- Yellow (49%)
- Blue (43%)



- Cyan (0%)
- Magenta (32%)
- Yellow (39%)
- Black (29%)



- Cyan (29%)
- Magenta (52%)
- Yellow (57%)

Brightness & Saturation Gradients

These gradients show how the YUV color 137.8600, -14.2280, 36.9568 changes by changing the brightness by 10 percent. The first figure shows a shift by +10% for each color and the second figure -10%.

Similar to the brightness gradients but the following saturation gradients show a change of the YUV color 137.8600, -14.2280, 36.9568 by changing the saturation by 10% instead.

■ 137.8600,
-14.2280, 36.9568

■ 137.8600,
-14.2280, 36.9568

■ 255.0000, 0.0000,
0.0000

■ 112.0770,
-13.3490, 35.0125

■ 191.9420,
-15.2544, 39.5159

■ 87.1800, -12.9067,
33.1681

■ 216.2510,
-13.9277, 33.9829

■ 63.5110, -11.5909,
31.1239

■ 236.3520,
-10.5265, 16.3543

■ 39.8420, -10.2751,
29.0796

■ 253.7460, -4.8048,
1.0998

■ 17.5860, -8.6699,
27.5501

■ 5.0830, -2.5059,
10.4512

■ 0.0000, 0.0000,

0.0000

■ 137.8600,
-14.2280, 36.9568

■ 137.8600,
-14.2280, 36.9568

■ 127.0030,
-17.7495, 46.4784

■ 148.7170,
-10.7065, 27.4352

■ 116.7330,
-21.5604, 55.4852

■ 158.9870, -6.8956,
18.4284

■ 105.8760,
-25.0819, 65.0067

■ 169.8440, -3.3741,
8.9068

■ 95.0190, -28.6034,
74.5283

■ 180.7010, 0.1474,
-0.6148

■ 84.1620, -32.1249,
84.0499

■ 191.5580, 3.6689,
-10.1364

■ 73.8920, -35.9358,
93.0567

■ 201.8280, 7.4798,
-19.1432

■ 73.1910, -36.0832,
93.6715

■ 212.6850, 11.0013,
-28.6647

■ 223.5420, 14.5228,
-38.1863

■ 231.9880, 11.3449,
-45.5935

Harmonies

Analogous

The Analogous color harmony consists of three colors that are next to each other on the color wheel.



139.2050, -4.0451, 37.5312



137.8600, -14.2280, 36.9568



136.3720, -20.8894, 26.8608

Triad

The Triadic color harmony groups three colors that are evenly spaced from another and form a triangle on the color wheel.



137.8600, -14.2280, 36.9568



128.4340, -5.1440, -30.1986



134.9650, 23.1883, -17.5093

Complementary

The Complementary color scheme is a pair of colors which are on the opposite of each other on the color wheel.



137.8600, -14.2280, 36.9568



151.1400, 14.2280, -36.9568

Split Complementary

Split-complementary colors differ from the complementary color scheme. The scheme consists of three colors, the original color and two neighbors of the complement color.



128.2670, 25.0114, -42.3302



137.8600, -14.2280, 36.9568



124.2820, 8.7350, -48.4823

Square

The Square scheme is like the rectangle color scheme, but the four colors are evenly spaced on the color wheel.



137.8600, -14.2280, 36.9568



131.4060, -15.9762, -9.1261



123.5120, 19.9606, -55.7000



138.8110, 16.8552, 7.1818

Rectangle

The Rectangle color scheme consists of four colors that form a rectangle on the color wheel.



137.8600, -14.2280, 36.9568



134.9640, -22.1673, 16.6946



123.5120, 19.9606, -55.7000



133.1380, 24.0890, -26.4310

Sweetspot

The Sweet Spot groups the original color and five complimentary colors.



137.8600, -14.2280, 36.9568



218.1930, -6.0111, 14.7397



136.9550, 15.3052, 37.7505



107.5450, -3.2267, 8.2920



245.0000, 0.0000, 0.0000



117.0000, 0.0000, 0.0000

Same Dimension

The Same Dimension uses a secret algorithm to generate beautiful new colors.



137.8600, -14.2280, 36.9568



169.5160, -22.4394, 57.4295



157.8180, -24.0673, 19.4536



83.8650, -1.9054, 4.5034



62.1830, -30.6562, 79.6465



10.7090, -5.2795, 13.4102

Inverse Universe

The Inverse Universe completely reimagines the original color for something new.



151.1400, 14.2280, -36.9568



189.4840, 22.4394, -57.4295



131.1820, 24.0673, -19.4536



85.7220, 1.6161, -5.0182



90.8170, 30.6562, -79.6465



15.2910, 5.2795, -13.4102

Previews

White Background



This preview shows how the YUV color 137.8600, -14.2280, 36.9568 looks on a white background.

Color Contrast Check

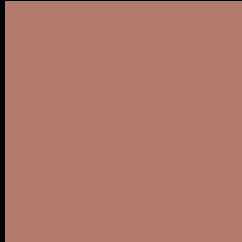
Large Text (above 18pt) WCAG AA ✓ Pass

Any Text WCAG AA × Fail

Large Text (above 18pt) WCAG AAA × Fail

Any Text WCAG AAA × Fail

Black Background



This preview shows how the YUV color 137.8600, -14.2280, 36.9568 looks on a black background.

Color Contrast Check

Large Text (above 18pt) WCAG AA ✓ Pass

Any Text WCAG AA ✓ Pass

Large Text (above 18pt) WCAG AAA ✓ Pass

Any Text WCAG AAA × Fail

If you want to check with other color combinations, try the [Color Contrast Checker](#).

YUV 137.8600, -14.2280, 36.9568

Background



This preview shows how black text looks on a background with the YUV color 137.8600, -14.2280, 36.9568.



This preview shows how white text looks on a background with the YUV color 137.8600, -14.2280, 36.9568.

36.9568.

Color Blindness Simulation

Color vision deficiency is a very complex topic, and I could not describe the different causes any better than Wikipedia does, so if you want to learn more, you should check out their [article about color blindness](#).

Dichromacy



Original Color

137.8600, -14.2280, 36.9568

Protanopia

136.1120, -9.9152, 6.9178

Deuteranopia

136.9350, -14.7580, 20.2280



Tritanopia

138.8630, -5.3555, 37.8311

Trichromacy



Original Color

137.8600, -14.2280, 36.9568

Protanomaly

136.7220, -11.6949, 17.7838

Deuteranomaly

137.3810, -14.4848, 25.9759

Tritanomaly

138.3530, -8.5550, 37.4014

Monochromacy



Original Color

137.8600, -14.2280, 36.9568

Achromatopsia

138.0000, 0.0000, 0.0000

Achromatomaly

137.7090, -5.2795, 13.4102

CSS Examples

Text

The CSS property to change the color of the text to YUV 137.8600, -14.2280, 36.9568 is called "color". The color property can be set on classes, ids or directly on the HTML element.

This example shows how text in the color `rgb(180, 122, 109)` looks like.

```
.text, #text, p{  
    color:rgb(180, 122, 109)  
}
```

If you want to add a text shadow in that color use the text-shadow property, you can generate a text shadow directly with our [CSS Text Shadow Generator](#).

Here you see how black text with a 4 pixel rgb(180, 122, 109) colored shadow looks like.

```
.shadow{ text-shadow: 4px 4px 2px rgb(180, 122, 109) }
```

Border

The CSS property to change the border of an element to YUV 137.8600, -14.2280, 36.9568 is called "border".

The border property can be set on classes, ids or directly on the HTML element.

This example shows the color as border, it can be applied via the CSS property "border" or "border-color".

```
.border, #border, table{ border:4px solid rgb(180, 122, 109) }
```


If only the border color should be changed use the property border-color.

```
.border{ border-color:rgb(180, 122, 109) }
```

If you want to add a box shadow in that color use:

Here you see how a box with a 4 pixel rgb(180, 122, 109) colored shadow looks like.

```
.boxshadow{ -moz-box-shadow:4px 4px 4px  
4px rgb(180, 122, 109); -webkit-box-  
shadow:4px 4px 4px 4px rgb(180, 122, 109);  
box-shadow:4px 4px 4px 4px rgb(180, 122,  
109) }
```

Background

The CSS property to change the background color of an element to YUV 137.8600, -14.2280, 36.9568 is called "background". The background property can be set on classes, ids or directly on the HTML element.

```
.background, #background, body{  
background: rgb(180, 122, 109) }
```

If only the background color should be changed can be used:

```
.background{ background-color: rgb(180,  
122, 109) }
```

This example shows the color as background, it is applied via the CSS property "background".

To optimize and compress your CSS code, you can use our [online CSS compressor and optimizer](#) based on csstidy. If you want to create a linear or radial gradient as background or border, check our [CSS Gradient Generator](#).

Hey! You found this booklet interesting? Support Converting Colors with the new Membership Option!

The pro membership hides all ads, plus gives you double the colors in the color bucket, and more awesome pro features!

[Learn more, Memberships starting at \\$2.50/m!](#)

**Follow me
on Twitter!**

@ConvertingColor