

Converting Colors

YUV(138.0350, -19.7373,
30.6643)

Have a look what the booklet for
YUV(138.0350, -19.7373, 30.6643)
contains.

YUV(138.0350, -19.7373, 30.6643)	3
<i>Conversions</i>	4
<i>Details</i>	6
<i>Harmonies</i>	12
<i>Previews</i>	24
<i>Color Blindness Simulation</i>	28
<i>CSS Examples</i>	31

Color

**YUV(138.0350, -19.7373,
30.6643)**

Conversions

Conversions Part 1

Format	Color
Hex	AD8062
RGB	173, 128, 98
RGB Percent	68%, 50%, 38%
CMY	0.3216, 0.4980, 0.6157
CMYK	0.00, 0.26, 0.43, 0.32
HSL	24°, 31%, 53%
HSV	24°, 43%, 68%
XYZ	27.1574, 25.2044, 14.9889
YIQ	138.0350, 36.4500, 0.2100

Conversions

Conversions Part 2

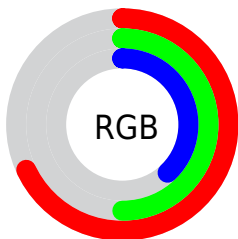
Format	Color
R_{YB}	173, 148, 98
Decimal	11370594
CIE _{Lab}	57.27, 13.48, 23.07
CIE _{LCh}	57, 26.719, 59.689
Yxy	25.2044, 0.4032, 0.3742
Android (android.graphics.Color)	4289560674 (0xFFAD8062)
YUV	138.0350, -19.7373, 30.6643
Hunter-Lab	50.2040, 8.7008, 17.4412

Details

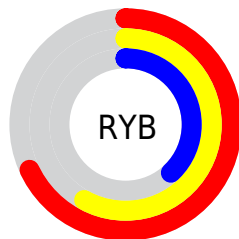
The YUV color **138.0350, -19.7373, 30.6643** is a dark color, and the websafe version is hex **CC9966**. A complement of this color would be **132.9650, 19.7373, -30.6643**, and the grayscale version is **138.0000, 0.0000, 0.0000**.

A 20% lighter version of the original color is **192.0030, -21.2005, 33.3234**, and **87.7680, -18.1266, 27.3905** is the 20% darker color. If you saturate the color by 10%, you get **130.2270, -24.2689, 37.5119**, and if you desaturate by 10%, it is **145.8430, -15.2056, 23.8167**.

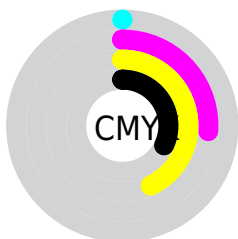
Distribution



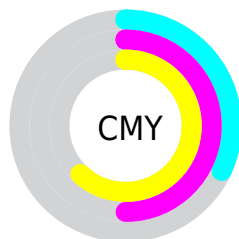
- Red (68%)
- Green (50%)
- Blue (38%)



- Red (68%)
- Yellow (58%)
- Blue (38%)



- Cyan (0%)
- Magenta (26%)
- Yellow (43%)
- Black (32%)



- Cyan (32%)
- Magenta (50%)
- Yellow (62%)

Brightness & Saturation Gradients

These gradients show how the YUV color 138.0350, -19.7373, 30.6643 changes by changing the brightness by 10 percent. The first figure shows a shift by +10% for each color and the second figure -10%.

Similar to the brightness gradients but the following saturation gradients show a change of the YUV color 138.0350, -19.7373, 30.6643 by changing the saturation by 10% instead.

■ 138.0350,
-19.7373, 30.6643

■ 138.0350,
-19.7373, 30.6643

■ 255.0000, 0.0000,
0.0000

■ 112.2520,
-18.8582, 28.7200

■ 192.0030,
-21.2005, 33.3234

■ 87.7680, -18.1266,
27.3905

■ 218.4050,
-20.9057, 32.0938

■ 63.6860, -17.1002,
24.8314

■ 238.5060,
-17.5045, 14.4652

■ 40.6750, -17.0948,
23.0870

■ 252.2640,
-10.4832, 2.3995

■ 21.0750, -10.3900,
19.2282

■ 1.4950, -0.7370,
3.0739

■ 0.0000, 0.0000,

0.0000

■ 138.0350,
-19.7373, 30.6643

■ 138.0350,
-19.7373, 30.6643

■ 130.2270,
-24.2689, 37.5119

■ 145.8430,
-15.2056, 23.8167

■ 121.7180,
-28.9480, 44.9743

■ 154.3520,
-10.5265, 16.3543

■ 113.9100,
-33.4796, 51.8219

■ 162.1600, -5.9949,
9.5067

■ 105.5150,
-37.7219, 59.1843

■ 170.5550, -1.7526,
2.1443

■ 97.5930, -42.6903,
66.1319

■ 178.4770, 3.2158,
-4.8033

■ 92.2300, -45.4694,
70.8353

■ 186.2850, 7.7475,
-11.6509

■ 194.6800, 11.9898,
-19.0134

■ 202.4880, 16.5214,
-25.8610

■ 210.4100, 21.4899,
-32.8086

Harmonies

Analogous

The Analogous color harmony consists of three colors that are next to each other on the color wheel.



139.5550, -11.6126, 38.1013



138.0350, -19.7373, 30.6643



136.2520, -22.3092, 15.5650

Triad

The Triadic color harmony groups three colors that are evenly spaced from another and form a triangle on the color wheel.



138.0350, -19.7373, 30.6643



126.2780, 4.7929, -44.0938



139.6360, 18.9135, 0.3192

Complementary

The Complementary color scheme is a pair of colors which are on the opposite of each other on the color wheel.



138.0350, -19.7373, 30.6643



132.9650, 19.7373, -30.6643

Split Complementary

Split-complementary colors differ from the complementary color scheme. The scheme consists of three colors, the original color and two neighbors of the complement color.



134.8500, 24.2310, -25.3014



138.0350, -19.7373, 30.6643



124.2300, 17.6346, -56.3297

Square

The Square scheme is like the rectangle color scheme, but the four colors are evenly spaced on the color wheel.



138.0350, -19.7373, 30.6643



130.2560, -8.5072, -24.7805



127.7070, 24.3014, -47.9780



141.0750, 9.8230, 22.7362

Rectangle

The Rectangle color scheme consists of four colors that form a rectangle on the color wheel.



138.0350, -19.7373, 30.6643



134.6310, -20.5241, 2.9546



127.7070, 24.3014, -47.9780



137.8630, 21.2665, -7.7729

Sweetspot

The Sweet Spot groups the original color and five complimentary colors.



138.0350, -19.7373, 30.6643



210.7150, -7.7475, 11.6509



125.5550, 8.6004, 41.6093



103.4910, -4.6791, 7.4624



240.0000, 0.0000, 0.0000



112.0000, 0.0000, 0.0000

Same Dimension

The Same Dimension uses a secret algorithm to generate beautiful new colors.



138.0350, -19.7373, 30.6643



169.6860, -30.4112, 47.6334



159.1670, -30.1553, 12.1315



82.4520, -2.1948, 3.9886



80.0700, -39.4745, 61.3286



12.1600, -5.9949, 9.5067

Inverse Universe

The Inverse Universe completely reimagines the original color for something new.



132.9650, 19.7373, -30.6643



162.3140, 30.4112, -47.6334



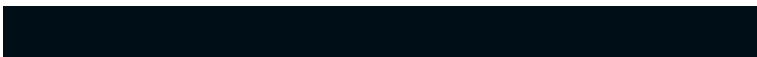
110.6590, 30.7341, -11.1019



81.9610, 2.4842, -3.4738



69.9300, 39.4745, -61.3286



10.8400, 5.9949, -9.5067

Previews

White Background



This preview shows how the YUV color 138.0350, -19.7373, 30.6643 looks on a white background.

Color Contrast Check

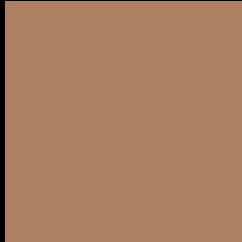
Large Text (above 18pt) WCAG AA ✓ Pass

Any Text WCAG AA × Fail

Large Text (above 18pt) WCAG AAA × Fail

Any Text WCAG AAA × Fail

Black Background



This preview shows how the YUV color 138.0350, -19.7373, 30.6643 looks on a black background.

Color Contrast Check

Large Text (above 18pt) WCAG AA ✓ Pass

Any Text WCAG AA ✓ Pass

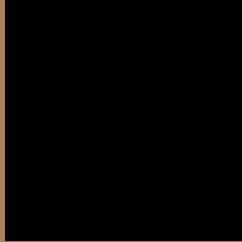
Large Text (above 18pt) WCAG AAA ✓ Pass

Any Text WCAG AAA × Fail

If you want to check with other color combinations, try the [Color Contrast Checker](#).

YUV 138.0350, -19.7373, 30.6643

Background



This preview shows how black text looks on a background with the YUV color 138.0350, -19.7373, 30.6643.



This preview shows how white text looks on a background with the YUV color 138.0350, -19.7373,

30.6643.

Color Blindness Simulation

Color vision deficiency is a very complex topic, and I could not describe the different causes any better than Wikipedia does, so if you want to learn more, you should check out their [article about color blindness](#).

Dichromacy



Original Color

138.0350, -19.7373, 30.6643

Protanopia

136.8860, -17.1988, 9.7470

Deuteranopia

137.5780, -20.0050, 23.1721



Tritanopia

139.9870, -3.4446, 31.5834

Trichromacy



Original Color

138.0350, -19.7373, 30.6643

Protanomaly

137.1150, -17.8047, 17.4391

Deuteranomaly

137.8880, -20.1578, 25.5312

Tritanomaly

139.3800, -9.5543, 31.2387

Monochromacy



Original Color

138.0350, -19.7373, 30.6643

Achromatopsia

138.0000, 0.0000, 0.0000

Achromatomaly

137.8290, -7.3107, 11.5510

CSS Examples

Text

The CSS property to change the color of the text to YUV 138.0350, -19.7373, 30.6643 is called "color". The color property can be set on classes, ids or directly on the HTML element.

This example shows how text in the color `rgb(173, 128, 98)` looks like.

```
.text, #text, p{  
    color:rgb(173, 128, 98)  
}
```

If you want to add a text shadow in that color use the text-shadow property, you can generate a text shadow directly with our [CSS Text Shadow Generator](#).

Here you see how black text with a 4 pixel rgb(173, 128, 98) colored shadow looks like.

```
.shadow{ text-shadow: 4px 4px 2px rgb(173, 128, 98) }
```

Border

The CSS property to change the border of an element to YUV 138.0350, -19.7373, 30.6643 is called "border".

The border property can be set on classes, ids or directly on the HTML element.

This example shows the color as border, it can be applied via the CSS property "border" or "border-color".

```
.border, #border, table{ border:4px solid rgb(173, 128, 98) }
```


If only the border color should be changed use the property `border-color`.

```
.border{ border-color:rgb(173, 128, 98) }
```

If you want to add a box shadow in that color use:

Here you see how a box with a 4 pixel `rgb(173, 128, 98)` colored shadow looks like.

```
.boxshadow{ -moz-box-shadow:4px 4px 4px  
4px rgb(173, 128, 98); -webkit-box-  
shadow:4px 4px 4px 4px rgb(173, 128, 98);  
box-shadow:4px 4px 4px 4px rgb(173, 128,  
98) }
```

Background

The CSS property to change the background color of an element to YUV 138.0350, -19.7373, 30.6643 is called "background". The background property can be set on classes, ids or directly on the HTML element.

```
.background, #background, body{  
background: rgb(173, 128, 98) }
```

If only the background color should be changed can be used:

```
.background{ background-color: rgb(173,  
128, 98) }
```

This example shows the color as background, it is applied via the CSS property "background".

To optimize and compress your CSS code, you can use our [online CSS compressor and optimizer](#) based on csstidy. If you want to create a linear or radial gradient as background or border, check our [CSS Gradient Generator](#).

Hey! You found this booklet interesting? Support Converting Colors with the new Membership Option!

The pro membership hides all ads, plus gives you double the colors in the color bucket, and more awesome pro features!

[Learn more, Memberships starting at \\$2.50/m!](#)

**Follow me
on Twitter!**

@ConvertingColor