

Converting Colors

YUV(138.2870, -8.0295,
102.3573)

Have a look what the booklet for
YUV(138.2870, -8.0295, 102.3573)
contains.

YUV(138.2870, -8.0295, 102.3573)	3
<i>Conversions</i>	4
<i>Details</i>	6
<i>Harmonies</i>	12
<i>Previews</i>	24
<i>Color Blindness Simulation</i>	28
<i>CSS Examples</i>	31

Color

**YUV(138.2870, -8.0295,
102.3573)**

Conversions

Conversions Part 1

Format	Color
Hex	FF527A
RGB	255, 82, 122
RGB Percent	100%, 32%, 48%
CMY	0.0000, 0.6784, 0.5216
CMYK	0.00, 0.68, 0.52, 0.00
HSL	346°, 100%, 66%
HSV	346°, 68%, 100%
XYZ	47.7701, 28.6997, 21.4342
YIQ	138.2870, 90.2680, 49.1160

Conversions

Conversions Part 2

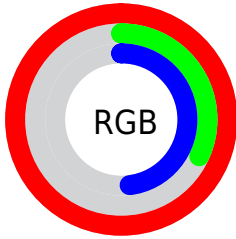
Format	Color
R_{YB}	255, 82, 122
Decimal	16732794
CIE _{Lab}	60.52, 67.73, 15.58
CIE _{LCh}	61, 69.495, 12.954
Yxy	28.6997, 0.4879, 0.2931
Android (android.graphics.Color)	4294922874 (0xFFFF527A)
YUV	138.2870, -8.0295, 102.3573
Hunter-Lab	53.5721, 65.4168, 13.7786

Details

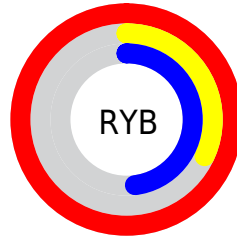
The YUV color **138.2870, -8.0295, 102.3573** is a light color, and the websafe version is hex **FF3366**. The color can be described as light muted rose. A complement of this color would be **198.7130, 8.0295, -102.3573**, and the grayscale version is **138.0000, 0.0000, 0.0000**.

A 20% lighter version of the original color is **178.8480, -2.3901, 66.7853**, and **65.8440, 4.0209, 110.6388** is the 20% darker color. If you saturate the color by 10%, you get **121.3320, -9.5307, 117.2268**, and if you desaturate by 10%, it is **155.2420, -6.5283, 87.4878**.

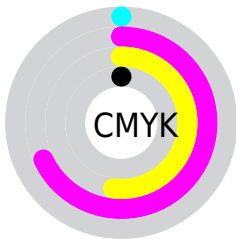
Distribution



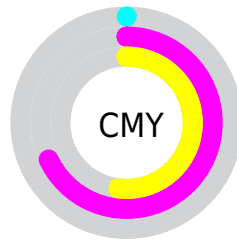
- Red (100%)
- Green (32%)
- Blue (48%)



- Red (100%)
- Yellow (32%)
- Blue (48%)



- Cyan (0%)
- Magenta (68%)
- Yellow (52%)
- Black (0%)



- Cyan (0%)
- Magenta (68%)
- Yellow (52%)

Brightness & Saturation Gradients

These gradients show how the YUV color 138.2870, -8.0295, 102.3573 changes by changing the brightness by 10 percent. The first figure shows a shift by +10% for each color and the second figure -10%.

Similar to the brightness gradients but the following saturation gradients show a change of the YUV color 138.2870, -8.0295, 102.3573 by changing the saturation by 10% instead.

138.2870, -8.0295,
102.3573

138.2870, -8.0295,
102.3573

255.0000, 0.0000,
0.0000

106.4980, -4.6825,
102.1723

178.8480, -2.3901,
66.7853

65.8440, 4.0209,
110.6388

198.9490, 1.0111,
49.1567

54.0670, -1.0190,
93.7802

219.1640, 4.8491,
31.4282

42.7030, -5.7696,
77.4365

239.7380, 7.5242,
13.3848

30.9970, -11.8305,
61.3926

21.8700, -9.3029,
43.9640

12.0740, -5.4595,

24.4911

■ 0.0000, 0.0000,
0.0000

■ 138.2870, -8.0295,
102.3573

■ 138.2870, -8.0295,
102.3573

■ 121.3320, -9.5307,
117.2268

■ 155.2420, -6.5283,
87.4878

■ 103.9040,
-10.3057, 132.5112

■ 172.6700, -5.7533,
72.2034

■ 86.9490, -11.8069,
147.3807

■ 190.2120, -4.5415,
56.8191

■ 82.9710, -11.8177,
150.8694

■ 207.0530, -3.4771,
42.0495

■ 224.5950, -2.2653,
26.6652

241.5500, -0.7642,
11.7956

255.0000, 0.0000,
0.0000

Harmonies

Analogous

The Analogous color harmony consists of three colors that are next to each other on the color wheel.



144.2670, 19.0954, 82.2038



138.2870, -8.0295, 102.3573



139.8160, -37.3773, 88.7384

Triad

The Triadic color harmony groups three colors that are evenly spaced from another and form a triangle on the color wheel.



138.2870, -8.0295, 102.3573



125.7200, -39.3020, -40.9734



124.7510, 64.2128, -109.4066

Complementary

The Complementary color scheme is a pair of colors which are on the opposite of each other on the color wheel.



138.2870, -8.0295, 102.3573



198.7130, 8.0295, -102.3573

Split Complementary

Split-complementary colors differ from the complementary color scheme. The scheme consists of three colors, the original color and two neighbors of the complement color.



126.9560, 49.8147, -111.3404



138.2870, -8.0295, 102.3573



113.2760, -2.6011, -99.3431

Square

The Square scheme is like the rectangle color scheme, but the four colors are evenly spaced on the color wheel.



138.2870, -8.0295, 102.3573



133.4870, -65.8091, 14.4819



121.7460, 24.7752, -106.7712



129.1460, 62.0460, -67.6570

Rectangle

The Rectangle color scheme consists of four colors that form a rectangle on the color wheel.



138.2870, -8.0295, 102.3573



139.2870, -55.3575, 69.0313



121.7460, 24.7752, -106.7712



127.0990, 63.0552, -111.4658

Sweetspot

The Sweet Spot groups the original color and five complimentary colors.



138.2870, -8.0295, 102.3573



220.6170, -2.2762, 30.1539



141.4890, 55.9609, 64.4691



107.0670, -1.5120, 18.3582



0.0000, 0.0000, 0.0000



128.0000, 0.0000, 0.0000

Same Dimension

The Same Dimension uses a secret algorithm to generate beautiful new colors.



138.2870, -8.0295, 102.3573



115.3650, -9.5469, 122.4599



160.7290, -38.8134, 82.6757



119.2290, -0.6059, 7.6922



62.1250, -8.9356, 113.0234



20.8460, -2.8821, 37.8461

Inverse Universe

The Inverse Universe completely reimagines the original color for something new.



138.2870, -8.0295, 102.3573



115.3650, -9.5469, 122.4599



176.2710, 38.8134, -82.6757



119.2290, -0.6059, 7.6922



62.1250, -8.9356, 113.0234



20.8460, -2.8821, 37.8461

Previews

White Background



This preview shows how the YUV color 138.2870, -8.0295, 102.3573 looks on a white background.

Color Contrast Check

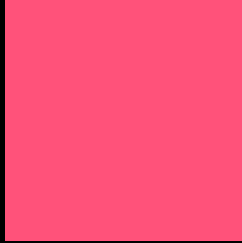
Large Text (above 18pt) WCAG AA ✓ Pass

Any Text WCAG AA × Fail

Large Text (above 18pt) WCAG AAA × Fail

Any Text WCAG AAA × Fail

Black Background



This preview shows how the YUV color 138.2870, -8.0295, 102.3573 looks on a black background.

Color Contrast Check

Large Text (above 18pt) WCAG AA ✓ Pass

Any Text WCAG AA ✓ Pass

Large Text (above 18pt) WCAG AAA ✓ Pass

Any Text WCAG AAA × Fail

If you want to check with other color combinations, try the [Color Contrast Checker](#).

YUV 138.2870, -8.0295, 102.3573

Background



This preview shows how black text looks on a background with the YUV color 138.2870, -8.0295, 102.3573.



This preview shows how white text looks on a background with the YUV color 138.2870, -8.0295,

Color Blindness Simulation

Color vision deficiency is a very complex topic, and I could not describe the different causes any better than Wikipedia does, so if you want to learn more, you should check out their [article about color blindness](#).

Dichromacy



Original Color

138.2870, -8.0295, 102.3573

Protanopia

146.4390, 4.2206, -0.3850

Deuteranopia

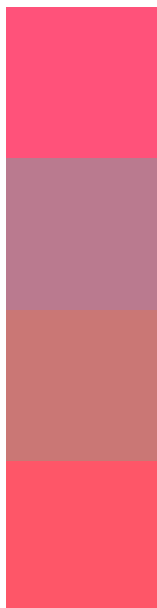
146.3050, -15.9264, 21.6575



Tritanopia

137.9050, -22.1382, 100.9383

Trichromacy



Original Color

138.2870, -8.0295, 102.3573

Protanomaly

143.5300, -0.2613, 37.2462

Deuteranomaly

143.5890, -13.1084, 51.2264

Tritanomaly

138.2840, -16.9020, 101.4829

Monochromacy



Original Color

138.2870, -8.0295, 102.3573

Achromatopsia

138.0000, 0.0000, 0.0000

Achromatomaly

138.4330, -3.1715, 37.3313

CSS Examples

Text

The CSS property to change the color of the text to YUV 138.2870, -8.0295, 102.3573 is called "color". The color property can be set on classes, ids or directly on the HTML element.

This example shows how text in the color `rgb(255, 82, 122)` looks like.

```
.text, #text, p{  
    color:rgb(255, 82, 122)  
}
```

If you want to add a text shadow in that color use the text-shadow property, you can generate a text shadow directly with our [CSS Text Shadow Generator](#).

Here you see how black text with a 4 pixel rgb(255, 82, 122) colored shadow looks like.

```
.shadow{ text-shadow: 4px 4px 2px rgb(255, 82, 122) }
```

Border

The CSS property to change the border of an element to YUV 138.2870, -8.0295, 102.3573 is called "border".

The border property can be set on classes, ids or directly on the HTML element.

This example shows the color as border, it can be applied via the CSS property "border" or "border-color".

```
.border, #border, table{ border:4px solid rgb(255, 82, 122) }
```


If only the border color should be changed use the property `border-color`.

```
.border{ border-color:rgb(255, 82, 122) }
```

If you want to add a box shadow in that color use:

Here you see how a box with a 4 pixel `rgb(255, 82, 122)` colored shadow looks like.

```
.boxshadow{ -moz-box-shadow:4px 4px 4px  
4px rgb(255, 82, 122); -webkit-box-  
shadow:4px 4px 4px 4px rgb(255, 82, 122);  
box-shadow:4px 4px 4px 4px rgb(255, 82,  
122) }
```

Background

The CSS property to change the background color of an element to YUV 138.2870, -8.0295, 102.3573 is called "background". The background property can be set on classes, ids or directly on the HTML element.

```
.background, #background, body{  
background: rgb(255, 82, 122) }
```

If only the background color should be changed can be used:

```
.background{ background-color: rgb(255, 82,  
122) }
```

This example shows the color as background, it is applied via the CSS property "background".

To optimize and compress your CSS code, you can use our [online CSS compressor and optimizer](#) based on csstidy. If you want to create a linear or radial gradient as background or border, check our [CSS Gradient Generator](#).

Hey! You found this booklet interesting? Support Converting Colors with the new Membership Option!

The pro membership hides all ads, plus gives you double the colors in the color bucket, and more awesome pro features!

[Learn more, Memberships starting at \\$2.50/m!](#)

**Follow me
on Twitter!**

@ConvertingColor