

Converting Colors

YUV(138.5080, -20.4634,
30.2495)

Have a look what the booklet for
YUV(138.5080, -20.4634, 30.2495)
contains.

YUV(138.5080, -20.4634, 30.2495)	3
<i>Conversions</i>	4
<i>Details</i>	6
<i>Harmonies</i>	12
<i>Previews</i>	24
<i>Color Blindness Simulation</i>	28
<i>CSS Examples</i>	31

Color

**YUV(138.5080, -20.4634,
30.2495)**

Conversions

Conversions Part 1

Format	Color
Hex	AD8161
RGB	173, 129, 97
RGB Percent	68%, 51%, 38%
CMY	0.3216, 0.4941, 0.6196
CMYK	0.00, 0.25, 0.44, 0.32
HSL	25°, 32%, 53%
HSV	25°, 44%, 68%
XYZ	27.2415, 25.4478, 14.7854
YIQ	138.5080, 36.4960, -0.6240

Conversions

Conversions Part 2

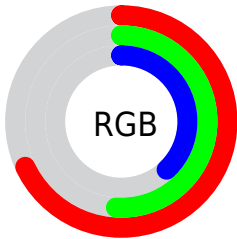
Format	Color
R_{YB}	173, 152, 97
Decimal	11370849
CIE _{Lab}	57.51, 12.81, 23.94
CIE _{LCh}	58, 27.153, 61.848
Yxy	25.4478, 0.4037, 0.3771
Android (android.graphics.Color)	4289560929 (0xFFAD8161)
YUV	138.5080, -20.4634, 30.2495
Hunter-Lab	50.4458, 8.1125, 17.9345

Details

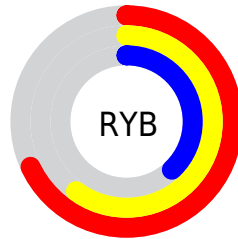
The YUV color $138.5080, -20.4634, 30.2495$ is a dark color, and the websafe version is hex $CC9966$. A complement of this color would be $131.4920, 20.4634, -30.2495$, and the grayscale version is $139.0000, 0.0000, 0.0000$.

A 20% lighter version of the original color is $192.4760, -21.9267, 32.9085$, and $88.2410, -18.8528, 26.9756$ is the 20% darker color. If you saturate the color by 10%, you get $130.7000, -24.9951, 37.0971$, and if you desaturate by 10%, it is $146.3160, -15.9318, 23.4019$.

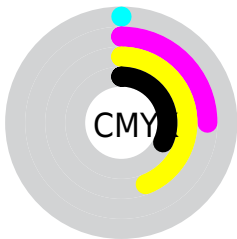
Distribution



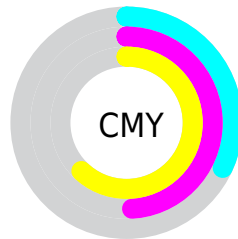
- Red (68%)
- Green (51%)
- Blue (38%)



- Red (68%)
- Yellow (60%)
- Blue (38%)



- Cyan (0%)
- Magenta (25%)
- Yellow (44%)
- Black (32%)



- Cyan (32%)
- Magenta (49%)
- Yellow (62%)

Brightness & Saturation Gradients

These gradients show how the YUV color 138.5080, -20.4634, 30.2495 changes by changing the brightness by 10 percent. The first figure shows a shift by +10% for each color and the second figure -10%.

Similar to the brightness gradients but the following saturation gradients show a change of the YUV color 138.5080, -20.4634, 30.2495 by changing the saturation by 10% instead.

■ 138.5080,
-20.4634, 30.2495

■ 138.5080,
-20.4634, 30.2495

■ 255.0000, 0.0000,
0.0000

■ 112.7250,
-19.5844, 28.3052

■ 192.4760,
-21.9267, 32.9085

■ 88.2410, -18.8528,
26.9756

■ 219.4650,
-21.9212, 31.1642

■ 64.1590, -17.8264,
24.4166

■ 238.9790,
-18.2306, 14.0504

■ 41.0340, -18.2578,
22.7722

■ 252.1500,
-10.9200, 2.4994

■ 21.6620, -10.6794,
18.7134

■ 1.4950, -0.7370,
3.0739

■ 0.0000, 0.0000,

0.0000

■ 138.5080,
-20.4634, 30.2495

■ 138.5080,
-20.4634, 30.2495

■ 130.7000,
-24.9951, 37.0971

■ 146.3160,
-15.9318, 23.4019

■ 122.7780,
-29.9636, 44.0447

■ 154.2380,
-10.9633, 16.4543

■ 114.9700,
-34.4952, 50.8923

■ 162.0460, -6.4317,
9.6067

■ 107.1620,
-39.0269, 57.7399

■ 169.8540, -1.9000,
2.7590

■ 99.3540, -43.5585,
64.5875

■ 177.7760, 3.0684,
-4.1886

■ 94.5780, -46.6270,
68.7761

■ 185.5840, 7.6001,
-11.0362

■ 193.3920, 12.1317,
-17.8838

■ 201.2000, 16.6634,
-24.7314

■ 209.1220, 21.6319,
-31.6790

Harmonies

Analogous

The Analogous color harmony consists of three colors that are next to each other on the color wheel.



139.6260, -12.6336, 38.9160



138.5080, -20.4634, 30.2495



136.5400, -22.4512, 14.4354

Triad

The Triadic color harmony groups three colors that are evenly spaced from another and form a triangle on the color wheel.



138.5080, -20.4634, 30.2495



126.3100, 6.2562, -46.7529



139.9460, 18.7606, 2.6784

Complementary

The Complementary color scheme is a pair of colors which are on the opposite of each other on the color wheel.



138.5080, -20.4634, 30.2495



131.4920, 20.4634, -30.2495

Split Complementary

Split-complementary colors differ from the complementary color scheme. The scheme consists of three colors, the original color and two neighbors of the complement color.



135.8610, 24.2255, -23.5571



138.5080, -20.4634, 30.2495



124.1590, 18.6556, -57.1444

Square

The Square scheme is like the rectangle color scheme, but the four colors are evenly spaced on the color wheel.



138.5080, -20.4634, 30.2495



130.4730, -7.6282, -26.7248



128.8210, 24.7382, -48.0780



141.9720, 9.3808, 24.5806

Rectangle

The Rectangle color scheme consists of four colors that form a rectangle on the color wheel.



138.5080, -20.4634, 30.2495



135.0330, -20.2293, 1.7251



128.8210, 24.7382, -48.0780



138.8740, 21.2611, -6.0285

Sweetspot

The Sweet Spot groups the original color and five complimentary colors.



138.5080, -20.4634, 30.2495



211.3020, -8.0369, 11.1361



124.7400, 8.0162, 42.3240



104.0780, -4.9685, 6.9476



240.0000, 0.0000, 0.0000



112.0000, 0.0000, 0.0000

Same Dimension

The Same Dimension uses a secret algorithm to generate beautiful new colors.



138.5080, -20.4634, 30.2495



170.5180, -32.3004, 46.9037



160.8140, -31.4603, 10.6871



83.0390, -2.4842, 3.4738



81.8310, -40.3427, 59.7842



12.7470, -6.2843, 8.9919

Inverse Universe

The Inverse Universe completely reimagines the original color for something new.



131.4920, 20.4634, -30.2495



159.0690, 32.0110, -47.4185



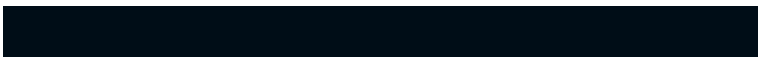
109.1860, 31.4603, -10.6871



81.9610, 2.4842, -3.4738



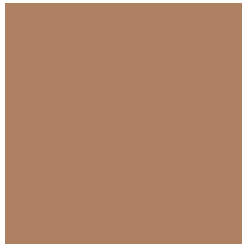
68.1690, 40.3427, -59.7842



10.2530, 6.2843, -8.9919

Previews

White Background



This preview shows how the YUV color 138.5080, -20.4634, 30.2495 looks on a white background.

Color Contrast Check

Large Text (above 18pt) WCAG AA ✓ Pass

Any Text WCAG AA × Fail

Large Text (above 18pt) WCAG AAA × Fail

Any Text WCAG AAA × Fail

Black Background



This preview shows how the YUV color 138.5080, -20.4634, 30.2495 looks on a black background.

Color Contrast Check

Large Text (above 18pt) WCAG AA ✓ Pass

Any Text WCAG AA ✓ Pass

Large Text (above 18pt) WCAG AAA ✓ Pass

Any Text WCAG AAA × Fail

If you want to check with other color combinations, try the [Color Contrast Checker](#).

YUV 138.5080, -20.4634, 30.2495

Background



This preview shows how black text looks on a background with the YUV color 138.5080, -20.4634, 30.2495.



This preview shows how white text looks on a background with the YUV color 138.5080, -20.4634,

30.2495.

Color Blindness Simulation

Color vision deficiency is a very complex topic, and I could not describe the different causes any better than Wikipedia does, so if you want to learn more, you should check out their [article about color blindness](#).

Dichromacy



Original Color

138.5080, -20.4634, 30.2495

Protanopia

137.0710, -17.7830, 10.4617

Deuteranopia

137.7630, -20.5892, 23.8868



Tritanopia

140.6880, -3.2972, 30.9686

Trichromacy



Original Color

138.5080, -20.4634, 30.2495

Protanomaly

137.8870, -18.6783, 17.6391

Deuteranomaly

138.0730, -20.7420, 26.2460

Tritanomaly

140.0810, -9.4069, 30.6240

Monochromacy



Original Color

138.5080, -20.4634, 30.2495

Achromatopsia

139.0000, 0.0000, 0.0000

Achromatomaly

138.5300, -7.1633, 10.9362

CSS Examples

Text

The CSS property to change the color of the text to YUV 138.5080, -20.4634, 30.2495 is called "color". The color property can be set on classes, ids or directly on the HTML element.

This example shows how text in the color `rgb(173, 129, 97)` looks like.

```
.text, #text, p{  
    color:rgb(173, 129, 97)  
}
```

If you want to add a text shadow in that color use the text-shadow property, you can generate a text shadow directly with our [CSS Text Shadow Generator](#).

Here you see how black text with a 4 pixel rgb(173, 129, 97) colored shadow looks like.

```
.shadow{ text-shadow: 4px 4px 2px rgb(173, 129, 97) }
```

Border

The CSS property to change the border of an element to YUV 138.5080, -20.4634, 30.2495 is called "border".

The border property can be set on classes, ids or directly on the HTML element.

This example shows the color as border, it can be applied via the CSS property "border" or "border-color".

```
.border, #border, table{ border:4px solid rgb(173, 129, 97) }
```


If only the border color should be changed use the property `border-color`.

```
.border{ border-color:rgb(173, 129, 97) }
```

If you want to add a box shadow in that color use:

Here you see how a box with a 4 pixel `rgb(173, 129, 97)` colored shadow looks like.

```
.boxshadow{ -moz-box-shadow:4px 4px 4px  
4px rgb(173, 129, 97); -webkit-box-  
shadow:4px 4px 4px 4px rgb(173, 129, 97);  
box-shadow:4px 4px 4px 4px rgb(173, 129,  
97) }
```

Background

The CSS property to change the background color of an element to YUV 138.5080, -20.4634, 30.2495 is called "background". The background property can be set on classes, ids or directly on the HTML element.

```
.background, #background, body{  
background: rgb(173, 129, 97) }
```

If only the background color should be changed can be used:

```
.background{ background-color: rgb(173,  
129, 97) }
```

This example shows the color as background, it is applied via the CSS property "background".

To optimize and compress your CSS code, you can use our [online CSS compressor and optimizer](#) based on csstidy. If you want to create a linear or radial gradient as background or border, check our [CSS Gradient Generator](#).

Hey! You found this booklet interesting? Support Converting Colors with the new Membership Option!

The pro membership hides all ads, plus gives you double the colors in the color bucket, and more awesome pro features!

[Learn more, Memberships starting at \\$2.50/m!](#)

**Follow me
on Twitter!**

@ConvertingColor