

Converting Colors

YUV(139.1850, 3.3598, 89.2918)

Have a look what the booklet for
YUV(139.1850, 3.3598, 89.2918)
contains.

YUV(139.1850, 3.3598, 89.2918)	3
<i>Conversions</i>	4
<i>Details</i>	6
<i>Harmonies</i>	12
<i>Previews</i>	24
<i>Color Blindness Simulation</i>	28
<i>CSS Examples</i>	31

Color

**YUV(139.1850, 3.3598,
89.2918)**

Conversions

Conversions Part 1

Format	Color
Hex	F15692
RGB	241, 86, 146
RGB Percent	95%, 34%, 57%
CMY	0.0549, 0.6627, 0.4275
CMYK	0.00, 0.64, 0.39, 0.05
HSL	337°, 85%, 64%
HSV	337°, 64%, 95%
XYZ	44.7917, 27.4317, 30.1282
YIQ	139.1850, 73.1200, 51.5200

Conversions

Conversions Part 2

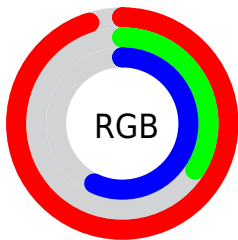
Format	Color
R _Y B	241, 86, 146
Decimal	15816338
CIE Lab	59.37, 64.22, -0.38
CIE LCh	59, 64.218, 359.665
Yxy	27.4317, 0.4376, 0.2680
Android (android.graphics.Color)	4294006418 (0xFFFF15692)
YUV	139.1850, 3.3598, 89.2918
Hunter-Lab	52.3753, 60.9979, 2.5569

Details

The YUV color **139.1850, 3.3598, 89.2918** is a light color, and the websafe version is hex **FF6699**. The color can be described as light muted rose. A complement of this color would be **187.8150, -3.3598, -89.2918**, and the grayscale version is **139.0000, 0.0000, 0.0000**.

A 20% lighter version of the original color is **182.9860, 8.3879, 63.1563**, and **72.9820, 11.3479, 93.8548** is the 20% darker color. If you saturate the color by 10%, you get **123.3870, 3.7532, 103.1466**, and if you desaturate by 10%, it is **154.9830, 2.9664, 75.4369**.

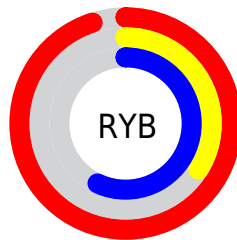
Distribution



Red (95%)

Green (34%)

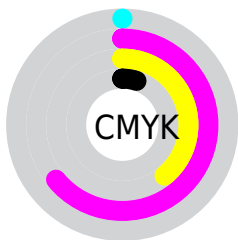
Blue (57%)



Red (95%)

Yellow (34%)

Blue (57%)

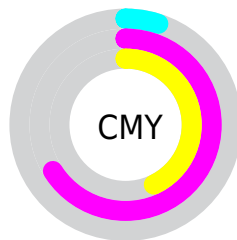


Cyan (0%)

Magenta (64%)

Yellow (39%)

Black (5%)



Cyan (5%)

Magenta (66%)

Yellow (43%)

Brightness & Saturation Gradients

These gradients show how the YUV color 139.1850, 3.3598, 89.2918 changes by changing the brightness by 10 percent. The first figure shows a shift by +10% for each color and the second figure -10%.

Similar to the brightness gradients but the following saturation gradients show a change of the YUV color 139.1850, 3.3598, 89.2918 by changing the saturation by 10% instead.

139.1850, 3.3598,
89.2918

139.1850, 3.3598,
89.2918

255.0000, 0.0000,
0.0000

108.7550, 5.5438,
88.7919

182.9860, 8.3879,
63.1563

72.9820, 11.3479,
93.8548

203.2010, 12.2259,
45.4277

53.0580, 9.3384,
85.0181

223.3020, 15.6271,
27.7991

41.8790, 4.0037,
69.3891

240.9120, 6.9454,
12.3552

30.8140, -0.8943,
53.6601

20.0760, -8.4185,
40.2753

9.6820, -4.2802,

19.5729

■ 0.0000, 0.0000,
0.0000

■ 139.1850, 3.3598,
89.2918

■ 139.1850, 3.3598,
89.2918

■ 123.3870, 3.7532,
103.1466

■ 154.9830, 2.9664,
75.4369

■ 107.5890, 4.1466,
117.0014

■ 170.7810, 2.5730,
61.5821

■ 91.9050, 4.9768,
130.7563

■ 186.4650, 1.7428,
47.8272

■ 82.6610, 5.0971,
138.8633

■ 202.2630, 1.3493,
33.9723

■ 218.0610, 0.9559,
20.1175

234.4460, 0.2731,
5.7479

250.1300, -0.5571,
-8.0070

250.8140, 2.0637,
-8.6069

Harmonies

Analogous

The Analogous color harmony consists of three colors that are next to each other on the color wheel.



145.5780, 27.3230, 56.4981



139.1850, 3.3598, 89.2918



137.8990, -23.1212, 89.5426

Triad

The Triadic color harmony groups three colors that are evenly spaced from another and form a triangle on the color wheel.



139.1850, 3.3598, 89.2918



129.4910, -48.5561, -12.7086



123.0410, 57.6608, -107.9070

Complementary

The Complementary color scheme is a pair of colors which are on the opposite of each other on the color wheel.



139.1850, 3.3598, 89.2918



187.8150, -3.3598, -89.2918

Split Complementary

Split-complementary colors differ from the complementary color scheme. The scheme consists of three colors, the original color and two neighbors of the complement color.



121.6610, 37.1421, -106.6967



139.1850, 3.3598, 89.2918



106.3170, -11.4953, -93.2400

Square

The Square scheme is like the rectangle color scheme, but the four colors are evenly spaced on the color wheel.



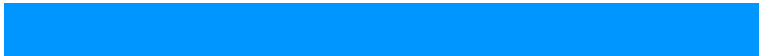
139.1850, 3.3598, 89.2918



133.3090, -65.7213, 33.0550



115.2770, 12.6814, -101.0979



117.1200, 67.9748, -102.7142

Rectangle

The Rectangle color scheme consists of four colors that form a rectangle on the color wheel.



139.1850, 3.3598, 89.2918



138.3430, -40.1021, 75.9982



115.2770, 12.6814, -101.0979



123.4340, 51.5510, -108.2516

Sweetspot

The Sweet Spot groups the original color and five complimentary colors.



139.1850, 3.3598, 89.2918



223.4040, 0.7868, 27.7097



131.4770, 53.9948, 41.6777



108.3380, 0.8194, 17.2436



0.0000, 0.0000, 0.0000



128.0000, 0.0000, 0.0000

Same Dimension

The Same Dimension uses a secret algorithm to generate beautiful new colors.



139.1850, 3.3598, 89.2918



126.2680, 4.3049, 112.8980



141.7370, -27.4783, 87.0537



112.1580, 0.4151, 6.8774



63.1100, 3.8898, 106.0205



19.2520, 1.3548, 32.2280

Inverse Universe

The Inverse Universe completely reimagines the original color for something new.



139.1850, 3.3598, 89.2918



126.2680, 4.3049, 112.8980



185.2630, 27.4783, -87.0537



112.1580, 0.4151, 6.8774



63.1100, 3.8898, 106.0205



19.2520, 1.3548, 32.2280

Previews

White Background



This preview shows how the YUV color 139.1850, 3.3598, 89.2918 looks on a white background.

Color Contrast Check

Large Text (above 18pt) WCAG AA ✓ Pass

Any Text WCAG AA ✗ Fail

Large Text (above 18pt) WCAG AAA ✗ Fail

Any Text WCAG AAA ✗ Fail

Black Background



This preview shows how the YUV color 139.1850, 3.3598, 89.2918 looks on a black background.

Color Contrast Check

Large Text (above 18pt) WCAG AA ✓ Pass

Any Text WCAG AA ✓ Pass

Large Text (above 18pt) WCAG AAA ✓ Pass

Any Text WCAG AAA × Fail

If you want to check with other color combinations, try the [Color Contrast Checker](#).

YUV 139.1850, 3.3598, 89.2918

Background



This preview shows how black text looks on a background with the YUV color 139.1850, 3.3598, 89.2918.



This preview shows how white text looks on a background with the YUV color 139.1850, 3.3598,

Color Blindness Simulation

Color vision deficiency is a very complex topic, and I could not describe the different causes any better than Wikipedia does, so if you want to learn more, you should check out their [article about color blindness](#).

Dichromacy



Original Color

139.1850, 3.3598, 89.2918

Protanopia

144.0540, 18.2144, -8.8174

Deuteranopia

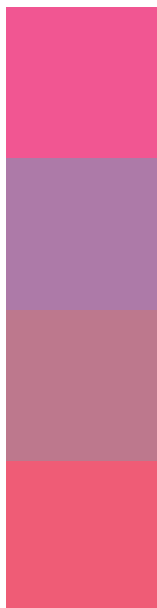
144.8660, -3.3849, 12.3955



Tritanopia

139.1420, -18.3110, 86.6985

Trichromacy



Original Color

139.1850, 3.3598, 89.2918

Protanomaly

142.4930, 12.5750, 26.7546

Deuteranomaly

143.0250, -0.9983, 40.3201

Tritanomaly

138.9170, -10.3121, 87.7728

Monochromacy



Original Color

139.1850, 3.3598, 89.2918

Achromatopsia

139.0000, 0.0000, 0.0000

Achromatomaly

139.2520, 1.3548, 32.2280

CSS Examples

Text

The CSS property to change the color of the text to YUV 139.1850, 3.3598, 89.2918 is called "color". The color property can be set on classes, ids or directly on the HTML element.

This example shows how text in the color `rgb(241, 86, 146)` looks like.

```
.text, #text, p{  
    color:rgb(241, 86, 146)  
}
```

If you want to add a text shadow in that color use the text-shadow property, you can generate a text shadow directly with our [CSS Text Shadow Generator](#).

Here you see how black text with a 4 pixel rgb(241, 86, 146) colored shadow looks like.

```
.shadow{ text-shadow: 4px 4px 2px rgb(241, 86, 146) }
```

Border

The CSS property to change the border of an element to YUV 139.1850, 3.3598, 89.2918 is called "border". The border property can be set on classes, ids or directly on the HTML element.

This example shows the color as border, it can be applied via the CSS property "border" or "border-color".

```
.border, #border, table{ border:4px solid rgb(241, 86, 146) }
```


If only the border color should be changed use the property border-color.

```
.border{ border-color:rgb(241, 86, 146) }
```

If you want to add a box shadow in that color use:

Here you see how a box with a 4 pixel rgb(241, 86, 146) colored shadow looks like.

```
.boxshadow{ -moz-box-shadow:4px 4px 4px  
4px rgb(241, 86, 146); -webkit-box-  
shadow:4px 4px 4px 4px rgb(241, 86, 146);  
box-shadow:4px 4px 4px 4px rgb(241, 86,  
146) }
```

Background

The CSS property to change the background color of an element to YUV 139.1850, 3.3598, 89.2918 is called "background". The background property can be set on classes, ids or directly on the HTML element.

```
.background, #background, body{  
background: rgb(241, 86, 146) }
```

If only the background color should be changed can be used:

```
.background{ background-color: rgb(241, 86,  
146) }
```

This example shows the color as background, it is applied via the CSS property "background".

To optimize and compress your CSS code, you can use our [online CSS compressor and optimizer](#) based on csstidy. If you want to create a linear or radial gradient as background or border, check our [CSS Gradient Generator](#).

Hey! You found this booklet interesting? Support Converting Colors with the new Membership Option!

The pro membership hides all ads, plus gives you double the colors in the color bucket, and more awesome pro features!

[Learn more, Memberships starting at \\$2.50/m!](#)

**Follow me
on Twitter!**

@ConvertingColor