

# Converting Colors

YUV(139.4950, 33.2800,  
59.2019)

Have a look what the booklet for  
YUV(139.4950, 33.2800, 59.2019)  
contains.

<b>YUV(139.4950, 33.2800, 59.2019)</b> .....	3
<b><i>Conversions</i></b> .....	4
<b><i>Details</i></b> .....	6
<b><i>Harmonies</i></b> .....	12
<b><i>Previews</i></b> .....	24
<b><i>Color Blindness Simulation</i></b> .....	28
<b><i>CSS Examples</i></b> .....	31

# Color

**YUV(139.4950, 33.2800,  
59.2019)**

# Conversions

## Conversions Part 1

<b>Format</b>	<b>Color</b>
Hex	CF5CCF
RGB	207, 92, 207
RGB Percent	81%, 36%, 81%
CMY	0.1882, 0.6392, 0.1882
CMYK	0.00, 0.56, 0.00, 0.19
HSL	300°, 55%, 59%
HSV	300°, 56%, 81%
XYZ	40.8218, 25.4247, 61.7874
YIQ	139.4950, 31.6250, 60.1450

# Conversions

## Conversions Part 2

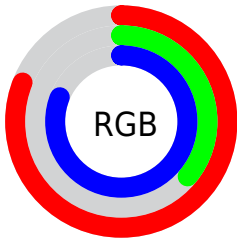
<b>Format</b>	<b>Color</b>
<b>R<sub>YB</sub></b>	207, 92, 207
Decimal	13589711
CIE <sub>Lab</sub>	57.49, 60.49, -38.88
CIE <sub>LCh</sub>	57, 71.906, 327.269
Yxy	25.4247, 0.3188, 0.1986
Android (android.graphics.Color)	4291779791 (0xFFCF5CCF)
YUV	139.4950, 33.2800, 59.2019
Hunter-Lab	50.4229, 56.2713, -37.3570

# Details

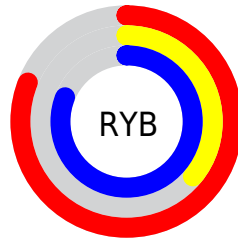
The YUV color **139.4950, 33.2800, 59.2019** is a light color, and the websafe version is hex **CC66CC**. The color can be described as light muted magenta. A complement of this color would be **159.5050, -33.2800, -59.2019**, and the grayscale version is **139.0000, 0.0000, 0.0000**.

A 20% lighter version of the original color is **191.6040, 31.2542, 55.5983**, and **81.5490, 34.7323, 60.0315** is the 20% darker color. If you saturate the color by 10%, you get **127.1680, 39.3572, 70.0127**, and if you desaturate by 10%, it is **151.8220, 27.2028, 48.3911**.

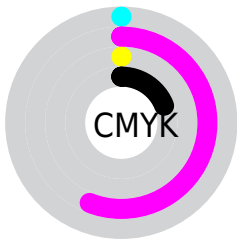
# Distribution



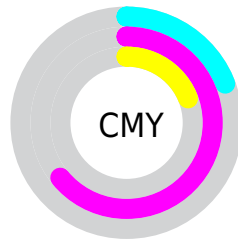
- Red (81%)
- Green (36%)
- Blue (81%)



- Red (81%)
- Yellow (36%)
- Blue (81%)



- Cyan (0%)
- Magenta (56%)
- Yellow (0%)
- Black (19%)



- Cyan (19%)
- Magenta (64%)
- Yellow (19%)

# Brightness & Saturation Gradients

These gradients show how the YUV color 139.4950, 33.2800, 59.2019 changes by changing the brightness by 10 percent. The first figure shows a shift by +10% for each color and the second figure -10%.

Similar to the brightness gradients but the following saturation gradients show a change of the YUV color 139.4950, 33.2800, 59.2019 by changing the saturation by 10% instead.



139.4950, 33.2800,  
59.2019

139.4950, 33.2800,  
59.2019

255.0000, 0.0000,  
0.0000

111.1960, 33.4274,  
58.5871

191.6040, 31.2542,  
55.5983

81.5490, 34.7323,  
60.0315

208.6270, 22.8619,  
40.6691

50.8420, 37.0529,  
62.4056

225.0630, 14.7589,  
26.2547

39.8050, 29.6761,  
48.4060

242.0860, 6.3666,  
11.3256

28.9960, 23.1730,  
34.2065

19.1980, 16.6644,  
21.7514

3.4200, 13.1039,

-2.9993

■ 0.0000, 0.0000,  
0.0000

■ 139.4950, 33.2800,  
59.2019

■ 139.4950, 33.2800,  
59.2019

■ 127.1680, 39.3572,  
70.0127

■ 151.8220, 27.2028,  
48.3911

■ 115.4280, 45.1450,  
80.3086

■ 163.5620, 21.4149,  
38.0951

■ 103.1010, 51.2222,  
91.1194

■ 175.8890, 15.3377,  
27.2843

■ 90.7740, 57.2994,  
101.9302

■ 188.2160, 9.2605,  
16.4736

■ 85.4910, 59.9039,  
106.5634

■ 199.9560, 3.4727,  
6.1776

■ 212.2830, -2.6045,  
-4.6332

■ 224.6100, -8.6817,  
-15.4440

■ 235.1760,  
-13.8908, -24.7104

# Harmonies

## Analogous

The Analogous color harmony consists of three colors that are next to each other on the color wheel.



137.8800, 55.7682, -13.9268



139.4950, 33.2800, 59.2019



129.6300, 8.5634, 100.3025

# Triad

The Triadic color harmony groups three colors that are evenly spaced from another and form a triangle on the color wheel.



139.4950, 33.2800, 59.2019



129.2000, -63.6956, 36.6586



119.5580, 36.6999, -104.8524

# Complementary

The Complementary color scheme is a pair of colors which are on the opposite of each other on the color wheel.



139.4950, 33.2800, 59.2019



159.5050, -33.2800, -59.2019

# Split Complementary

Split-complementary colors differ from the complementary color scheme. The scheme consists of three colors, the original color and two neighbors of the complement color.



112.2620, 8.7448, -98.4538



139.4950, 33.2800, 59.2019



121.5270, -59.9128, -10.1092

# Square

The Square scheme is like the rectangle color scheme, but the four colors are evenly spaced on the color wheel.



139.4950, 33.2800, 59.2019



130.7270, -52.6164, 76.5384



101.9170, -18.2001, -89.3812



122.3230, 59.9868, -107.2773



# Rectangle

The Rectangle color scheme consists of four colors that form a rectangle on the color wheel.



139.4950, 33.2800, 59.2019



127.2120, -10.9505, 105.9311



101.9170, -18.2001, -89.3812



117.2780, 27.9639, -102.8528

# Sweetspot

The Sweet Spot groups the original color and five complimentary colors.



139.4950, 33.2800, 59.2019



229.7590, 12.4438, 22.1364



105.1100, 50.2318, -11.4975



112.7380, 7.5242, 13.3848



0.0000, 0.0000, 0.0000



128.0000, 0.0000, 0.0000



# Same Dimension

The Same Dimension uses a secret algorithm to generate beautiful new colors.



139.4950, 33.2800, 59.2019



154.6230, 49.4859, 88.0306



132.9970, 8.3825, 64.9006



98.5430, 3.1833, 5.6628



69.3840, 48.6177, 86.4862



16.9330, 11.8650, 21.1068



# Inverse Universe

The Inverse Universe completely reimagines the original color for something new.



139.4950, 33.2800, 59.2019



154.6230, 49.4859, 88.0306



166.1170, -7.9457, -65.0006



98.5430, 3.1833, 5.6628



69.3840, 48.6177, 86.4862



16.9330, 11.8650, 21.1068



# Previews

## White Background



This preview shows how the YUV color 139.4950, 33.2800, 59.2019 looks on a white background.

## Color Contrast Check

Large Text (above 18pt) WCAG AA ✓ Pass

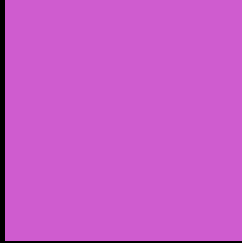
Any Text WCAG AA ✗ Fail

Large Text (above 18pt) WCAG AAA ✗ Fail

Any Text WCAG AAA ✗ Fail



# Black Background



This preview shows how the YUV color 139.4950, 33.2800, 59.2019 looks on a black background.

## Color Contrast Check

Large Text (above 18pt) WCAG AA ✓ Pass

Any Text WCAG AA ✓ Pass

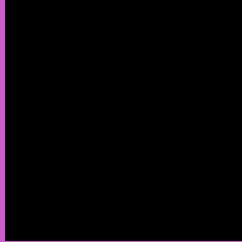
Large Text (above 18pt) WCAG AAA ✓ Pass

Any Text WCAG AAA × Fail

If you want to check with other color combinations, try the [Color Contrast Checker](#).

# YUV 139.4950, 33.2800, 59.2019

## Background



This preview shows how black text looks on a background with the YUV color 139.4950, 33.2800, 59.2019.



This preview shows how white text looks on a background with the YUV color 139.4950, 33.2800,



# Color Blindness Simulation

Color vision deficiency is a very complex topic, and I could not describe the different causes any better than Wikipedia does, so if you want to learn more, you should check out their [article about color blindness](#).

## Dichromacy



### Original Color

139.4950, 33.2800, 59.2019

### Protanopia

133.1880, 55.1233, -40.5069

### Deuteranopia

137.4900, 30.3244, -19.7237



## Tritanopia

139.8430, -8.3036, 50.1267

# Trichromacy



## Original Color

139.4950, 33.2800, 59.2019



## Protanomaly

135.3560, 47.1525, -3.8202



## Deuteranomaly

138.3070, 31.4006, 8.5008



## Tritanomaly

139.8770, 6.9626, 53.6049

# Monochromacy



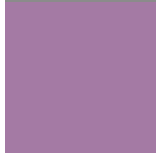
## Original Color

139.4950, 33.2800, 59.2019



## Achromatopsia

139.0000, 0.0000, 0.0000



## Achromatomaly

139.3460, 12.1544, 21.6216

# CSS Examples

## Text

The CSS property to change the color of the text to YUV 139.4950, 33.2800, 59.2019 is called "color". The color property can be set on classes, ids or directly on the HTML element.

This example shows how text in the color `rgb(207, 92, 207)` looks like.

```
.text, #text, p{  
    color:rgb(207, 92, 207)  
}
```

If you want to add a text shadow in that color use the text-shadow property, you can generate a text shadow directly with our [CSS Text Shadow Generator](#).

Here you see how black text with a 4 pixel rgb(207, 92, 207) colored shadow looks like.

```
.shadow{ text-shadow: 4px 4px 2px rgb(207, 92, 207) }
```

## Border

The CSS property to change the border of an element to YUV 139.4950, 33.2800, 59.2019 is called "border". The border property can be set on classes, ids or directly on the HTML element.

This example shows the color as border, it can be applied via the CSS property "border" or "border-color".

```
.border, #border, table{ border:4px solid rgb(207, 92, 207) }
```



If only the border color should be changed use the property `border-color`.

```
.border{ border-color:rgb(207, 92, 207) }
```

If you want to add a box shadow in that color use:

Here you see how a box with a 4 pixel `rgb(207, 92, 207)` colored shadow looks like.

```
.boxshadow{ -moz-box-shadow:4px 4px 4px  
4px rgb(207, 92, 207); -webkit-box-  
shadow:4px 4px 4px 4px rgb(207, 92, 207);  
box-shadow:4px 4px 4px 4px rgb(207, 92,  
207) }
```

# Background

The CSS property to change the background color of an element to YUV 139.4950, 33.2800, 59.2019 is called "background". The background property can be set on classes, ids or directly on the HTML element.

```
.background, #background, body{  
background: rgb(207, 92, 207) }
```

If only the background color should be changed can be used:

```
.background{ background-color: rgb(207, 92,  
207) }
```

This example shows the color as background, it is applied via the CSS property "background".

To optimize and compress your CSS code, you can use our [online CSS compressor and optimizer](#) based on csstidy. If you want to create a linear or radial gradient as background or border, check our [CSS Gradient Generator](#).

Hey! You found this booklet interesting? Support Converting Colors with the new Membership Option!

The pro membership hides all ads, plus gives you double the colors in the color bucket, and more awesome pro features!

**[Learn more, Memberships starting at \\$2.50/m!](#)**

**Follow me  
on Twitter!**

@ConvertingColor