

Converting Colors

YUV(139.5520, -10.1321,
76.6919)

Have a look what the booklet for
YUV(139.5520, -10.1321, 76.6919)
contains.

YUV(139.5520, -10.1321, 76.6919)	3
<i>Conversions</i>	4
<i>Details</i>	6
<i>Harmonies</i>	12
<i>Previews</i>	24
<i>Color Blindness Simulation</i>	28
<i>CSS Examples</i>	31

Color

**YUV(139.5520, -10.1321,
76.6919)**

Conversions

Conversions Part 1

Format	Color
Hex	E36377
RGB	227, 99, 119
RGB Percent	89%, 39%, 47%
CMY	0.1098, 0.6118, 0.5333
CMYK	0.00, 0.56, 0.48, 0.11
HSL	351°, 70%, 64%
HSV	351°, 56%, 89%
XYZ	39.4702, 26.5865, 20.5042
YIQ	139.5520, 69.8680, 33.3560

Conversions

Conversions Part 2

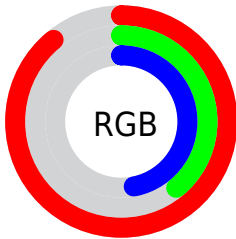
Format	Color
R _Y B	227, 99, 119
Decimal	14902135
CIE Lab	58.59, 51.53, 13.97
CIE LCh	59, 53.385, 15.166
Yxy	26.5865, 0.4560, 0.3071
Android (android.graphics.Color)	4293092215 (0xFFE36377)
YUV	139.5520, -10.1321, 76.6919
Hunter-Lab	51.5621, 46.4060, 12.5162

Details

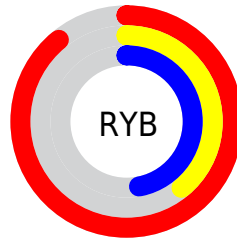
The YUV color **139.5520, -10.1321, 76.6919** is a light color, and the websafe version is hex **CC6666**. A complement of this color would be **186.4480, 10.1321, -76.6919**, and the grayscale version is **140.0000, 0.0000, 0.0000**.

A 20% lighter version of the original color is **186.1370, -7.4625, 60.3929**, and **83.2680, -6.0481, 73.4330** is the 20% darker color. If you saturate the color by 10%, you get **123.8850, -11.7753, 90.4319**, and if you desaturate by 10%, it is **155.2190, -8.4890, 62.9519**.

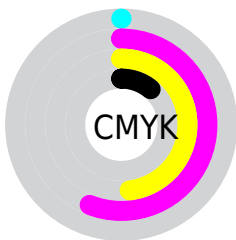
Distribution



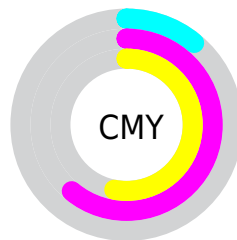
- Red (89%)
- Green (39%)
- Blue (47%)



- Red (89%)
- Yellow (39%)
- Blue (47%)



- Cyan (0%)
- Magenta (56%)
- Yellow (48%)
- Black (11%)



- Cyan (11%)
- Magenta (61%)
- Yellow (53%)

Brightness & Saturation Gradients

These gradients show how the YUV color 139.5520, -10.1321, 76.6919 changes by changing the brightness by 10 percent. The first figure shows a shift by +10% for each color and the second figure -10%.

Similar to the brightness gradients but the following saturation gradients show a change of the YUV color 139.5520, -10.1321, 76.6919 by changing the saturation by 10% instead.

■ 139.5520,
-10.1321, 76.6919

■ 139.5520,
-10.1321, 76.6919

■ 255.0000, 0.0000,
0.0000

■ 111.8830, -8.8163,
74.6476

■ 186.1370, -7.4625,
60.3929

■ 83.2680, -6.0481,
73.4330

■ 205.6510, -3.7719,
43.2791

■ 49.1960, -0.0966,
77.8811

■ 225.2790, 0.3555,
26.0653

■ 35.7830, -3.8370,
64.2113

■ 246.1950, 4.3409,
7.7220

■ 24.3330, -11.5032,
49.6970

■ 16.3740, -7.0864,
32.9980

■ 1.7940, -0.8844,

3.6887

■ 0.0000, 0.0000,
0.0000

■ 139.5520,
-10.1321, 76.6919

■ 139.5520,
-10.1321, 76.6919

■ 123.8850,
-11.7753, 90.4319

■ 155.2190, -8.4890,
62.9519

■ 108.8050,
-13.7079, 103.6570

■ 170.2990, -6.5564,
49.7268

■ 93.1380, -15.3510,
117.3970

■ 185.9660, -4.9132,
35.9868

■ 77.3570, -17.4310,
131.2369

■ 201.7470, -2.8333,
22.1469

■ 71.8630, -18.1735,
136.0551

■ 216.8270, -0.9007,
8.9217

■ 232.4940, 0.7425,
-4.8182

■ 246.4000, 3.2538,
-17.0138

■ 246.6280, 4.1274,
-17.2138

Harmonies

Analogous

The Analogous color harmony consists of three colors that are next to each other on the color wheel.



142.7840, 11.4455, 62.4564



139.5520, -10.1321, 76.6919



138.6930, -30.9076, 66.9212

Triad

The Triadic color harmony groups three colors that are evenly spaced from another and form a triangle on the color wheel.



139.5520, -10.1321, 76.6919



127.1630, -27.6884, -32.5920



116.1450, 56.6235, -101.8592

Complementary

The Complementary color scheme is a pair of colors which are on the opposite of each other on the color wheel.



139.5520, -10.1321, 76.6919



186.4480, 10.1321, -76.6919

Split Complementary

Split-complementary colors differ from the complementary color scheme. The scheme consists of three colors, the original color and two neighbors of the complement color.



117.9910, 43.3884, -103.4781



139.5520, -10.1321, 76.6919



108.2040, 3.3504, -94.8949

Square

The Square scheme is like the rectangle color scheme, but the four colors are evenly spaced on the color wheel.



139.5520, -10.1321, 76.6919



133.6600, -44.6954, 9.0682



114.9640, 24.1747, -100.8234



136.9410, 46.3711, -33.2743

Rectangle

The Rectangle color scheme consists of four colors that form a rectangle on the color wheel.



139.5520, -10.1321, 76.6919



137.8470, -41.3366, 51.8772



114.9640, 24.1747, -100.8234



117.2220, 53.1346, -102.8037

Sweetspot

The Sweet Spot groups the original color and five complimentary colors.



139.5520, -10.1321, 76.6919



225.5410, -3.7177, 25.8355



145.5850, 40.1376, 52.9840



110.2300, -2.0854, 15.5843



0.0000, 0.0000, 0.0000



128.0000, 0.0000, 0.0000

Same Dimension

The Same Dimension uses a secret algorithm to generate beautiful new colors.



139.5520, -10.1321, 76.6919



136.8050, -13.7079, 103.6570



162.5130, -31.3119, 56.5551



106.8160, -0.8953, 7.1774



56.7130, -14.1555, 107.2457



16.1610, -4.0234, 30.5538

Inverse Universe

The Inverse Universe completely reimagines the original color for something new.



139.5520, -10.1321, 76.6919



136.8050, -13.7079, 103.6570



163.4870, 31.3119, -56.5551



106.8160, -0.8953, 7.1774



56.7130, -14.1555, 107.2457



16.1610, -4.0234, 30.5538

Previews

White Background



This preview shows how the YUV color 139.5520, -10.1321, 76.6919 looks on a white background.

Color Contrast Check

Large Text (above 18pt) WCAG AA ✓ Pass

Any Text WCAG AA × Fail

Large Text (above 18pt) WCAG AAA × Fail

Any Text WCAG AAA × Fail

Black Background



This preview shows how the YUV color 139.5520, -10.1321, 76.6919 looks on a black background.

Color Contrast Check

Large Text (above 18pt) WCAG AA ✓ Pass

Any Text WCAG AA ✓ Pass

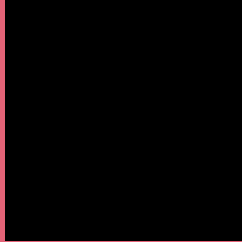
Large Text (above 18pt) WCAG AAA ✓ Pass

Any Text WCAG AAA × Fail

If you want to check with other color combinations, try the [Color Contrast Checker](#).

YUV 139.5520, -10.1321, 76.6919

Background



This preview shows how black text looks on a background with the YUV color 139.5520, -10.1321, 76.6919.



This preview shows how white text looks on a background with the YUV color 139.5520, -10.1321,

Color Blindness Simulation

Color vision deficiency is a very complex topic, and I could not describe the different causes any better than Wikipedia does, so if you want to learn more, you should check out their [article about color blindness](#).

Dichromacy



Original Color

139.5520, -10.1321, 76.6919

Protanopia

141.8970, -0.4422, 1.8443

Deuteranopia

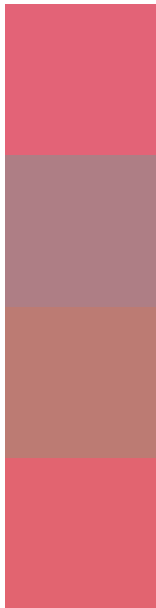
142.0490, -14.3212, 20.1280



Tritanopia

139.1730, -15.3683, 76.1473

Trichromacy



Original Color

139.5520, -10.1321, 76.6919

Protanomaly

141.1500, -4.0179, 28.8095

Deuteranomaly

141.5230, -13.0758, 40.7603

Tritanomaly

139.0420, -13.3317, 76.2622

Monochromacy



Original Color

139.5520, -10.1321, 76.6919

Achromatopsia

140.0000, 0.0000, 0.0000

Achromatomaly

139.8510, -3.8705, 28.1947

CSS Examples

Text

The CSS property to change the color of the text to YUV 139.5520, -10.1321, 76.6919 is called "color". The color property can be set on classes, ids or directly on the HTML element.

This example shows how text in the color `rgb(227, 99, 119)` looks like.

```
.text, #text, p{  
    color:rgb(227, 99, 119)  
}
```

If you want to add a text shadow in that color use the text-shadow property, you can generate a text shadow directly with our [CSS Text Shadow Generator](#).

Here you see how black text with a 4 pixel rgb(227, 99, 119) colored shadow looks like.

```
.shadow{ text-shadow: 4px 4px 2px rgb(227, 99, 119) }
```

Border

The CSS property to change the border of an element to YUV 139.5520, -10.1321, 76.6919 is called "border".

The border property can be set on classes, ids or directly on the HTML element.

This example shows the color as border, it can be applied via the CSS property "border" or "border-color".

```
.border, #border, table{ border:4px solid rgb(227, 99, 119) }
```


If only the border color should be changed use the property `border-color`.

```
.border{ border-color:rgb(227, 99, 119) }
```

If you want to add a box shadow in that color use:

Here you see how a box with a 4 pixel `rgb(227, 99, 119)` colored shadow looks like.

```
.boxshadow{ -moz-box-shadow:4px 4px 4px 4px rgb(227, 99, 119); -webkit-box-shadow:4px 4px 4px 4px rgb(227, 99, 119); box-shadow:4px 4px 4px 4px rgb(227, 99, 119) }
```

Background

The CSS property to change the background color of an element to YUV 139.5520, -10.1321, 76.6919 is called "background". The background property can be set on classes, ids or directly on the HTML element.

```
.background, #background, body{  
background: rgb(227, 99, 119) }
```

If only the background color should be changed can be used:

```
.background{ background-color: rgb(227, 99,  
119) }
```

This example shows the color as background, it is applied via the CSS property "background".

To optimize and compress your CSS code, you can use our [online CSS compressor and optimizer](#) based on csstidy. If you want to create a linear or radial gradient as background or border, check our [CSS Gradient Generator](#).

Hey! You found this booklet interesting? Support Converting Colors with the new Membership Option!

The pro membership hides all ads, plus gives you double the colors in the color bucket, and more awesome pro features!

[Learn more, Memberships starting at \\$2.50/m!](#)

**Follow me
on Twitter!**

@ConvertingColor