

Converting Colors

YUV(139.7000, -11.1911,
89.7171)

Have a look what the booklet for
YUV(139.7000, -11.1911, 89.7171)
contains.

YUV(139.7000, -11.1911, 89.7171)	3
<i>Conversions</i>	4
<i>Details</i>	6
<i>Harmonies</i>	12
<i>Previews</i>	24
<i>Color Blindness Simulation</i>	28
<i>CSS Examples</i>	31

Color

**YUV(139.7000, -11.1911,
89.7171)**

Conversions

Conversions Part 1

Format	Color
Hex	F25C75
RGB	242, 92, 117
RGB Percent	95%, 36%, 46%
CMY	0.0510, 0.6392, 0.5412
CMYK	0.00, 0.62, 0.52, 0.05
HSL	350°, 85%, 65%
HSV	350°, 62%, 95%
XYZ	43.6560, 27.8159, 19.8977
YIQ	139.7000, 81.3750, 39.5750

Conversions

Conversions Part 2

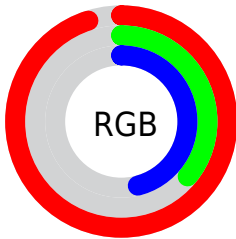
Format	Color
R _Y B	242, 92, 117
Decimal	15883381
CIE Lab	59.72, 59.39, 17.06
CIE LCh	60, 61.792, 16.027
Yxy	27.8159, 0.4778, 0.3044
Android (android.graphics.Color)	4294073461 (0xFFFF25C75)
YUV	139.7000, -11.1911, 89.7171
Hunter-Lab	52.7408, 55.4564, 14.5500

Details

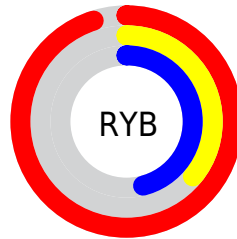
The YUV color **139.7000, -11.1911, 89.7171** is a light color, and the websafe version is hex **FF6666**. The color can be described as light muted rose. A complement of this color would be **194.3000, 11.1911, -89.7171**, and the grayscale version is **140.0000, 0.0000, 0.0000**.

A 20% lighter version of the original color is **182.3870, -6.5998, 63.6816**, and **79.2960, -5.0759, 88.3174** is the 20% darker color. If you saturate the color by 10%, you get **123.3320, -12.9817, 104.0718**, and if you desaturate by 10%, it is **156.0680, -9.4005, 75.3624**.

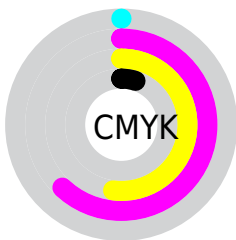
Distribution



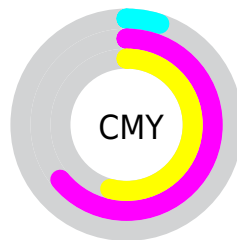
- Red (95%)
- Green (36%)
- Blue (46%)



- Red (95%)
- Yellow (36%)
- Blue (46%)



- Cyan (0%)
- Magenta (62%)
- Yellow (52%)
- Black (5%)



- Cyan (5%)
- Magenta (64%)
- Yellow (54%)

Brightness & Saturation Gradients

These gradients show how the YUV color 139.7000, -11.1911, 89.7171 changes by changing the brightness by 10 percent. The first figure shows a shift by +10% for each color and the second figure -10%.

Similar to the brightness gradients but the following saturation gradients show a change of the YUV color 139.7000, -11.1911, 89.7171 by changing the saturation by 10% instead.

■ 139.7000,
-11.1911, 89.7171

■ 139.7000,
-11.1911, 89.7171

■ 255.0000, 0.0000,
0.0000

■ 110.5580, -9.1491,
88.0876

■ 182.3870, -6.5998,
63.6816

■ 79.2960, -5.0759,
88.3174

■ 202.4880, -3.1986,
46.0530

■ 50.2080, -1.5815,
87.5176

■ 222.7030, 0.6394,
28.3245

■ 38.9580, -5.8953,
71.0738

■ 243.0320, 4.9142,
10.4959

■ 27.2090, -13.4140,
55.9447

■ 19.4780, -8.1237,
39.0458

■ 8.4860, -3.6906,

17.1138

■ 0.0000, 0.0000,
0.0000

■ 139.7000,
-11.1911, 89.7171

■ 139.7000,
-11.1911, 89.7171

■ 123.3320,
-12.9817, 104.0718

■ 156.0680, -9.4005,
75.3624

■ 106.9640,
-14.7723, 118.4266

■ 172.4360, -7.6099,
61.0076

■ 90.0090, -16.2734,
133.2961

■ 189.5050, -5.6720,
46.0381

■ 76.9180, -18.2006,
144.7769

■ 205.8730, -3.8814,
31.6834

■ 222.2410, -2.0908,
17.3286

■ 238.6090, -0.3002,
2.9739

■ 251.1130, 1.9163,
-7.9921

Harmonies

Analogous

The Analogous color harmony consists of three colors that are next to each other on the color wheel.



143.8440, 13.8809, 74.6818



139.7000, -11.1911, 89.7171



139.4940, -35.7395, 76.7428

Triad

The Triadic color harmony groups three colors that are evenly spaced from another and form a triangle on the color wheel.



139.7000, -11.1911, 89.7171



125.8970, -31.0082, -41.1287



120.5450, 63.3283, -105.7180

Complementary

The Complementary color scheme is a pair of colors which are on the opposite of each other on the color wheel.



139.7000, -11.1911, 89.7171



194.3000, 11.1911, -89.7171

Split Complementary

Split-complementary colors differ from the complementary color scheme. The scheme consists of three colors, the original color and two neighbors of the complement color.



123.2230, 48.2041, -108.0666



139.7000, -11.1911, 89.7171



111.8400, 2.0509, -98.0837

Square

The Square scheme is like the rectangle color scheme, but the four colors are evenly spaced on the color wheel.



139.7000, -11.1911, 89.7171



133.5000, -55.4625, 9.2085



119.3980, 25.9328, -104.7120



137.7750, 54.8339, -41.0217

Rectangle

The Rectangle color scheme consists of four colors that form a rectangle on the color wheel.



139.7000, -11.1911, 89.7171



139.4150, -49.5046, 58.3950



119.3980, 25.9328, -104.7120



122.2090, 59.5500, -107.1773

Sweetspot

The Sweet Spot groups the original color and five complimentary colors.



139.7000, -11.1911, 89.7171



222.2640, -3.5812, 28.7095



146.4750, 47.0938, 61.8504



107.5400, -2.2382, 17.9434



0.0000, 0.0000, 0.0000



128.0000, 0.0000, 0.0000

Same Dimension

The Same Dimension uses a secret algorithm to generate beautiful new colors.



139.7000, -11.1911, 89.7171



126.1590, -13.8824, 112.9936



166.2000, -36.5806, 66.4766



111.8160, -0.8953, 7.1774



58.5500, -13.5821, 110.0196



17.7700, -4.3236, 33.5277

Inverse Universe

The Inverse Universe completely reimagines the original color for something new.



139.7000, -11.1911, 89.7171



126.1590, -13.8824, 112.9936



167.8000, 36.5806, -66.4766



111.8160, -0.8953, 7.1774



58.5500, -13.5821, 110.0196



17.7700, -4.3236, 33.5277

Previews

White Background



This preview shows how the YUV color 139.7000, -11.1911, 89.7171 looks on a white background.

Color Contrast Check

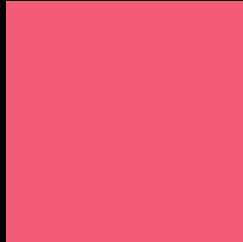
Large Text (above 18pt) WCAG AA ✓ Pass

Any Text WCAG AA × Fail

Large Text (above 18pt) WCAG AAA × Fail

Any Text WCAG AAA × Fail

Black Background



This preview shows how the YUV color 139.7000, -11.1911, 89.7171 looks on a black background.

Color Contrast Check

Large Text (above 18pt) WCAG AA ✓ Pass

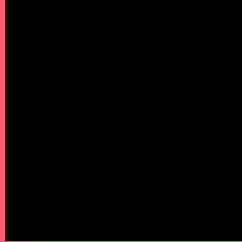
Any Text WCAG AA ✓ Pass

Large Text (above 18pt) WCAG AAA ✓ Pass

Any Text WCAG AAA × Fail

If you want to check with other color combinations, try the [Color Contrast Checker](#).

YUV 139.7000, -11.1911, 89.7171 Background



This preview shows how black text looks on a background with the YUV color 139.7000, -11.1911, 89.7171.



This preview shows how white text looks on a background with the YUV color 139.7000, -11.1911, 89.7171.

Color Blindness Simulation

Color vision deficiency is a very complex topic, and I could not describe the different causes any better than Wikipedia does, so if you want to learn more, you should check out their [article about color blindness](#).

Dichromacy



Original Color

139.7000, -11.1911, 89.7171

Protanopia

144.7830, -0.8790, 1.9443

Deuteranopia

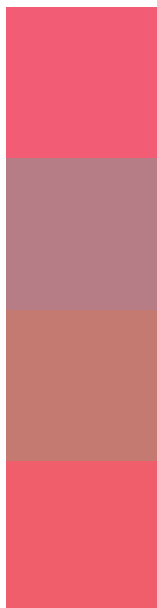
144.3760, -16.9474, 22.4722



Tritanopia

139.3380, -18.9006, 89.1576

Trichromacy



Original Color

139.7000, -11.1911, 89.7171

Protanomaly

143.0690, -4.4710, 34.1425

Deuteranomaly

142.5130, -14.5499, 46.9081

Tritanomaly

139.4350, -15.9905, 89.0725

Monochromacy



Original Color

139.7000, -11.1911, 89.7171

Achromatopsia

140.0000, 0.0000, 0.0000

Achromatomaly

140.1720, -4.0288, 32.2982

CSS Examples

Text

The CSS property to change the color of the text to YUV 139.7000, -11.1911, 89.7171 is called "color". The color property can be set on classes, ids or directly on the HTML element.

This example shows how text in the color `rgb(242, 92, 117)` looks like.

```
.text, #text, p{  
    color:rgb(242, 92, 117)  
}
```

If you want to add a text shadow in that color use the text-shadow property, you can generate a text shadow directly with our [CSS Text Shadow Generator](#).

Here you see how black text with a 4 pixel rgb(242, 92, 117) colored shadow looks like.

```
.shadow{ text-shadow: 4px 4px 2px rgb(242, 92, 117) }
```

Border

The CSS property to change the border of an element to YUV 139.7000, -11.1911, 89.7171 is called "border".

The border property can be set on classes, ids or directly on the HTML element.

This example shows the color as border, it can be applied via the CSS property "border" or "border-color".

```
.border, #border, table{ border:4px solid rgb(242, 92, 117) }
```


If only the border color should be changed use the property border-color.

```
.border{ border-color:rgb(242, 92, 117) }
```

If you want to add a box shadow in that color use:

Here you see how a box with a 4 pixel rgb(242, 92, 117) colored shadow looks like.

```
.boxshadow{ -moz-box-shadow:4px 4px 4px  
4px rgb(242, 92, 117); -webkit-box-  
shadow:4px 4px 4px 4px rgb(242, 92, 117);  
box-shadow:4px 4px 4px 4px rgb(242, 92,  
117) }
```

Background

The CSS property to change the background color of an element to YUV 139.7000, -11.1911, 89.7171 is called "background". The background property can be set on classes, ids or directly on the HTML element.

```
.background, #background, body{  
background: rgb(242, 92, 117) }
```

If only the background color should be changed can be used:

```
.background{ background-color: rgb(242, 92,  
117) }
```

This example shows the color as background, it is applied via the CSS property "background".

To optimize and compress your CSS code, you can use our [online CSS compressor and optimizer](#) based on csstidy. If you want to create a linear or radial gradient as background or border, check our [CSS Gradient Generator](#).

Hey! You found this booklet interesting? Support Converting Colors with the new Membership Option!

The pro membership hides all ads, plus gives you double the colors in the color bucket, and more awesome pro features!

[Learn more, Memberships starting at \\$2.50/m!](#)

**Follow me
on Twitter!**

@ConvertingColor