

Converting Colors

YUV(139.7500, -13.6807,
94.9352)

Have a look what the booklet for
YUV(139.7500, -13.6807, 94.9352)
contains.

YUV(139.7500, -13.6807, 94.9352)	3
<i>Conversions</i>	4
<i>Details</i>	6
<i>Harmonies</i>	12
<i>Previews</i>	24
<i>Color Blindness Simulation</i>	28
<i>CSS Examples</i>	31

Color

**YUV(139.7500, -13.6807,
94.9352)**

Conversions

Conversions Part 1

Format	Color
Hex	F85A70
RGB	248, 90, 112
RGB Percent	97%, 35%, 44%
CMY	0.0275, 0.6471, 0.5608
CMYK	0.00, 0.64, 0.55, 0.03
HSL	352°, 92%, 66%
HSV	352°, 64%, 97%
XYZ	45.2922, 28.4386, 18.4313
YIQ	139.7500, 87.1060, 40.3380

Conversions

Conversions Part 2

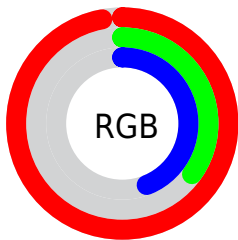
Format	Color
R _Y B	248, 90, 112
Decimal	16276080
CIE Lab	60.28, 61.73, 20.89
CIE LCh	60, 65.171, 18.693
Yxy	28.4386, 0.4914, 0.3086
Android (android.graphics.Color)	4294466160 (0xFFFF85A70)
YUV	139.7500, -13.6807, 94.9352
Hunter-Lab	53.3279, 58.2790, 16.8376

Details

The YUV color **139.7500, -13.6807, 94.9352** is a light color, and the websafe version is hex **FF6666**. The color can be described as light muted rose. A complement of this color would be **198.2500, 13.6807, -94.9352**, and the grayscale version is **140.0000, 0.0000, 0.0000**.

A 20% lighter version of the original color is **181.2300, -8.4944, 64.6963**, and **77.1120, -5.9712, 95.4948** is the 20% darker color. If you saturate the color by 10%, you get **122.6810, -15.6187, 109.9048**, and if you desaturate by 10%, it is **156.8190, -11.7428, 79.9657**.

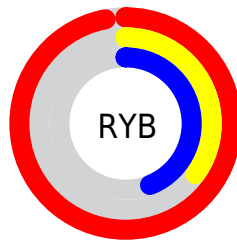
Distribution



Red (97%)

Green (35%)

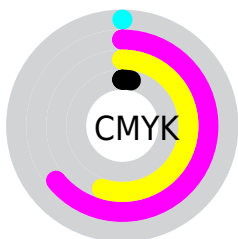
Blue (44%)



Red (97%)

Yellow (35%)

Blue (44%)

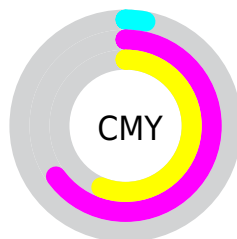


Cyan (0%)

Magenta (64%)

Yellow (55%)

Black (3%)



Cyan (3%)

Magenta (65%)

Yellow (56%)

Brightness & Saturation Gradients

These gradients show how the YUV color 139.7500, -13.6807, 94.9352 changes by changing the brightness by 10 percent. The first figure shows a shift by +10% for each color and the second figure -10%.

Similar to the brightness gradients but the following saturation gradients show a change of the YUV color 139.7500, -13.6807, 94.9352 by changing the saturation by 10% instead.

■ 139.7500,
-13.6807, 94.9352

■ 139.7500,
-13.6807, 94.9352

■ 255.0000, 0.0000,
0.0000

■ 110.1350,
-10.9126, 93.7206

■ 181.2300, -8.4944,
64.6963

■ 77.1120, -5.9712,
95.4948

■ 201.3310, -5.0932,
47.0677

■ 51.2470, -4.0658,
90.9914

■ 221.4320, -1.6920,
29.4391

■ 39.9970, -8.3795,
74.5476

■ 241.7610, 2.5828,
11.6106

■ 28.4050, -14.0037,
58.4038

■ 20.3750, -8.5659,
40.8901

■ 10.2800, -4.5750,

20.8024

■ 0.0000, 0.0000,
0.0000

■ 139.7500,
-13.6807, 94.9352

■ 139.7500,
-13.6807, 94.9352

■ 122.6810,
-15.6187, 109.9048

■ 156.8190,
-11.7428, 79.9657

■ 105.4980,
-17.9935, 124.9743

■ 174.0020, -9.3680,
64.8962

■ 89.0160, -20.2209,
139.4290

■ 190.4840, -7.1406,
50.4415

■ 78.1420, -21.2690,
148.9655

■ 207.5530, -5.2026,
35.4720

■ 224.7360, -2.8278,
20.4025

241.8050, -0.8899,
5.4330

252.9070, 1.0318,
-4.3034

Harmonies

Analogous

The Analogous color harmony consists of three colors that are next to each other on the color wheel.



143.9590, 12.8382, 82.4740



139.7500, -13.6807, 94.9352



140.7670, -39.8181, 78.2573

Triad

The Triadic color harmony groups three colors that are evenly spaced from another and form a triangle on the color wheel.



139.7500, -13.6807, 94.9352



124.1840, -29.6707, -50.1504



121.8160, 65.6597, -106.8326

Complementary

The Complementary color scheme is a pair of colors which are on the opposite of each other on the color wheel.



139.7500, -13.6807, 94.9352



198.2500, 13.6807, -94.9352

Split Complementary

Split-complementary colors differ from the complementary color scheme. The scheme consists of three colors, the original color and two neighbors of the complement color.



125.5370, 51.9933, -110.0959



139.7500, -13.6807, 94.9352



114.1710, 3.3667, -100.1280

Square

The Square scheme is like the rectangle color scheme, but the four colors are evenly spaced on the color wheel.



139.7500, -13.6807, 94.9352



132.6260, -59.9616, 5.5900



121.5980, 29.2852, -106.6414



140.5630, 56.4174, -35.5738

Rectangle

The Rectangle color scheme consists of four colors that form a rectangle on the color wheel.



139.7500, -13.6807, 94.9352



139.3350, -54.8882, 58.4652



121.5980, 29.2852, -106.6414



124.4090, 62.9024, -109.1067

Sweetspot

The Sweet Spot groups the original color and five complimentary colors.



139.7500, -13.6807, 94.9352



222.0360, -4.4547, 28.9094



148.0780, 49.2615, 66.5836



107.4260, -2.6750, 18.0434



0.0000, 0.0000, 0.0000



128.0000, 0.0000, 0.0000

Same Dimension

The Same Dimension uses a secret algorithm to generate beautiful new colors.



139.7500, -13.6807, 94.9352



122.0840, -16.8034, 116.5673



169.5270, -39.2068, 68.8208



116.1150, -1.0427, 7.7921



59.4750, -16.5032, 113.5934



19.2650, -5.0606, 36.6016

Inverse Universe

The Inverse Universe completely reimagines the original color for something new.



139.7500, -13.6807, 94.9352



122.0840, -16.8034, 116.5673



168.4730, 39.2068, -68.8208



116.1150, -1.0427, 7.7921



59.4750, -16.5032, 113.5934



19.2650, -5.0606, 36.6016

Previews

White Background



This preview shows how the YUV color 139.7500, -13.6807, 94.9352 looks on a white background.

Color Contrast Check

Large Text (above 18pt) WCAG AA ✓ Pass

Any Text WCAG AA × Fail

Large Text (above 18pt) WCAG AAA × Fail

Any Text WCAG AAA × Fail

Black Background



This preview shows how the YUV color 139.7500, -13.6807, 94.9352 looks on a black background.

Color Contrast Check

Large Text (above 18pt) WCAG AA ✓ Pass

Any Text WCAG AA ✓ Pass

Large Text (above 18pt) WCAG AAA ✓ Pass

Any Text WCAG AAA × Fail

If you want to check with other color combinations, try the [Color Contrast Checker](#).

YUV 139.7500, -13.6807, 94.9352 Background



This preview shows how black text looks on a background with the YUV color 139.7500, -13.6807, 94.9352.



This preview shows how white text looks on a background with the YUV color 139.7500, -13.6807,

Color Blindness Simulation

Color vision deficiency is a very complex topic, and I could not describe the different causes any better than Wikipedia does, so if you want to learn more, you should check out their [article about color blindness](#).

Dichromacy



Original Color

139.7500, -13.6807, 94.9352

Protanopia

145.8110, -3.3578, 3.6738

Deuteranopia

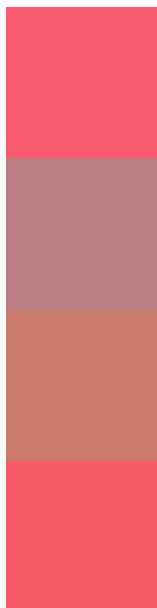
145.7630, -20.5892, 23.8868



Tritanopia

139.0290, -20.2273, 94.6906

Trichromacy



Original Color

139.7500, -13.6807, 94.9352

Protanomaly

143.6950, -7.2446, 37.1015

Deuteranomaly

143.6120, -18.0497, 49.4523

Tritanomaly

139.0120, -17.7539, 94.7055

Monochromacy



Original Color

139.7500, -13.6807, 94.9352

Achromatopsia

140.0000, 0.0000, 0.0000

Achromatomaly

139.9550, -4.9078, 34.2425

CSS Examples

Text

The CSS property to change the color of the text to YUV 139.7500, -13.6807, 94.9352 is called "color". The color property can be set on classes, ids or directly on the HTML element.

This example shows how text in the color `rgb(248, 90, 112)` looks like.

```
.text, #text, p{  
    color:rgb(248, 90, 112)  
}
```

If you want to add a text shadow in that color use the text-shadow property, you can generate a text shadow directly with our [CSS Text Shadow Generator](#).

Here you see how black text with a 4 pixel rgb(248, 90, 112) colored shadow looks like.

```
.shadow{ text-shadow: 4px 4px 2px rgb(248, 90, 112) }
```

Border

The CSS property to change the border of an element to YUV 139.7500, -13.6807, 94.9352 is called "border".

The border property can be set on classes, ids or directly on the HTML element.

This example shows the color as border, it can be applied via the CSS property "border" or "border-color".

```
.border, #border, table{ border:4px solid rgb(248, 90, 112) }
```


If only the border color should be changed use the property border-color.

```
.border{ border-color:rgb(248, 90, 112) }
```

If you want to add a box shadow in that color use:

Here you see how a box with a 4 pixel rgb(248, 90, 112) colored shadow looks like.

```
.boxshadow{ -moz-box-shadow:4px 4px 4px  
4px rgb(248, 90, 112); -webkit-box-  
shadow:4px 4px 4px 4px rgb(248, 90, 112);  
box-shadow:4px 4px 4px 4px rgb(248, 90,  
112) }
```

Background

The CSS property to change the background color of an element to YUV 139.7500, -13.6807, 94.9352 is called "background". The background property can be set on classes, ids or directly on the HTML element.

```
.background, #background, body{  
background: rgb(248, 90, 112) }
```

If only the background color should be changed can be used:

```
.background{ background-color: rgb(248, 90,  
112) }
```

This example shows the color as background, it is applied via the CSS property "background".

To optimize and compress your CSS code, you can use our [online CSS compressor and optimizer](#) based on csstidy. If you want to create a linear or radial gradient as background or border, check our [CSS Gradient Generator](#).

Hey! You found this booklet interesting? Support Converting Colors with the new Membership Option!

The pro membership hides all ads, plus gives you double the colors in the color bucket, and more awesome pro features!

[Learn more, Memberships starting at \\$2.50/m!](#)

**Follow me
on Twitter!**

@ConvertingColor