

# Converting Colors

YUV(139.9170, -24.1161,  
35.1528)

Have a look what the booklet for  
YUV(139.9170, -24.1161, 35.1528)  
contains.

<b>YUV(139.9170, -24.1161, 35.1528)</b> .....	3
<b><i>Conversions</i></b> .....	4
<b><i>Details</i></b> .....	6
<b><i>Harmonies</i></b> .....	12
<b><i>Previews</i></b> .....	24
<b><i>Color Blindness Simulation</i></b> .....	28
<b><i>CSS Examples</i></b> .....	31

# Color

**YUV(139.9170, -24.1161,  
35.1528)**

# Conversions

## Conversions Part 1

<b>Format</b>	<b>Color</b>
Hex	B4815B
RGB	180, 129, 91
RGB Percent	71%, 51%, 36%
CMY	0.2941, 0.4941, 0.6431
CMYK	0.00, 0.28, 0.49, 0.29
HSL	26°, 37%, 53%
HSV	26°, 49%, 71%
XYZ	28.5610, 26.1591, 13.4414
YIQ	139.9170, 42.5940, -1.0060

# Conversions

## Conversions Part 2

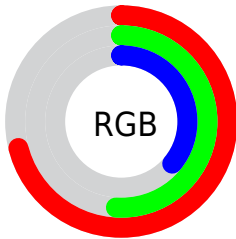
<b>Format</b>	<b>Color</b>
<b>R<sub>YB</sub></b>	180, 157, 91
Decimal	11829595
CIE Lab	58.19, 15.12, 28.33
CIE LCh	58, 32.111, 61.899
Yxy	26.1591, 0.4190, 0.3838
Android (android.graphics.Color)	4290019675 (0xFFB4815B)
YUV	139.9170, -24.1161, 35.1528
Hunter-Lab	51.1460, 10.1725, 20.2205

# Details

The YUV color **139.9170, -24.1161, 35.1528** is a dark color, and the websafe version is hex **CC9966**. A complement of this color would be **131.0830, 24.1161, -35.1528**, and the grayscale version is **140.0000, 0.0000, 0.0000**.

A 20% lighter version of the original color is **194.1840, -25.7267, 38.4266**, and **89.3510, -22.3580, 31.2642** is the 20% darker color. If you saturate the color by 10%, you get **131.9950, -29.0845, 42.1004**, and if you desaturate by 10%, it is **147.8390, -19.1476, 28.2052**.

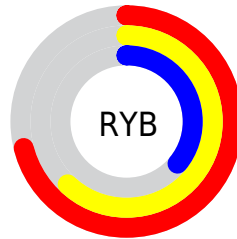
# Distribution



Red (71%)

Green (51%)

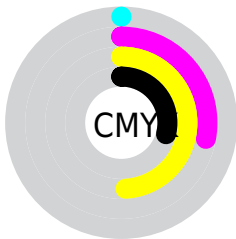
Blue (36%)



Red (71%)

Yellow (62%)

Blue (36%)

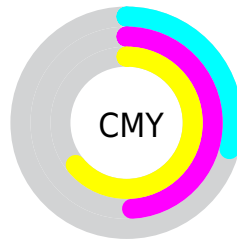


Cyan (0%)

Magenta (28%)

Yellow (49%)

Black (29%)



Cyan (29%)

Magenta (49%)

Yellow (64%)

# Brightness & Saturation Gradients

These gradients show how the YUV color 139.9170, -24.1161, 35.1528 changes by changing the brightness by 10 percent. The first figure shows a shift by +10% for each color and the second figure -10%.

Similar to the brightness gradients but the following saturation gradients show a change of the YUV color 139.9170, -24.1161, 35.1528 by changing the saturation by 10% instead.



■ 139.9170,  
-24.1161, 35.1528

■ 139.9170,  
-24.1161, 35.1528

■ 255.0000, 0.0000,  
0.0000

■ 114.1340,  
-23.2371, 33.2085

■ 194.1840,  
-25.7267, 38.4266

■ 89.3510, -22.3580,  
31.2642

■ 218.6670,  
-24.9788, 31.8640

■ 65.2690, -21.3316,  
28.7051

■ 238.2950,  
-20.8514, 14.6503

■ 42.0730, -20.7420,  
26.2460

■ 251.4660,  
-13.5407, 3.0993

■ 22.2710, -10.9796,  
21.6873

■ 254.6580, -1.3104,  
0.2999

■ 5.0830, -2.5059,  
10.4512

■ 0.0000, 0.0000,

0.0000

■ 139.9170,  
-24.1161, 35.1528

■ 139.9170,  
-24.1161, 35.1528

■ 131.9950,  
-29.0845, 42.1004

■ 147.8390,  
-19.1476, 28.2052

■ 123.4860,  
-33.7636, 49.5628

■ 156.3480,  
-14.4686, 20.7428

■ 115.5640,  
-38.7321, 56.5104

■ 164.2700, -9.5001,  
13.7952

■ 107.6420,  
-43.7005, 63.4580

■ 172.1920, -4.5317,  
6.8476

■ 99.1330, -48.3796,  
70.9204

■ 180.7010, 0.1474,  
-0.6148

■ 99.0190, -48.8164,  
71.0203

■ 188.6230, 5.1159,  
-7.5624

■ 196.5450, 10.0843,  
-14.5100

■ 205.0540, 14.7634,  
-21.9724

■ 212.9760, 19.7318,  
-28.9200

# Harmonies

## Analogous

The Analogous color harmony consists of three colors that are next to each other on the color wheel.



141.5020, -14.5445, 45.1637



139.9170, -24.1161, 35.1528



137.9980, -27.1140, 16.6648

# Triad

The Triadic color harmony groups three colors that are evenly spaced from another and form a triangle on the color wheel.



139.9170, -24.1161, 35.1528



123.8030, 8.4781, -59.4632



142.2710, 22.5444, 2.3933

# Complementary

The Complementary color scheme is a pair of colors which are on the opposite of each other on the color wheel.



139.9170, -24.1161, 35.1528



131.0830, 24.1161, -35.1528

# Split Complementary

Split-complementary colors differ from the complementary color scheme. The scheme consists of three colors, the original color and two neighbors of the complement color.



136.1960, 29.4834, -29.9899



139.9170, -24.1161, 35.1528



116.2420, 26.0097, -82.6502

# Square

The Square scheme is like the rectangle color scheme, but the four colors are evenly spaced on the color wheel.



139.9170, -24.1161, 35.1528



130.3860, -9.0643, -32.7875



125.4430, 31.3336, -63.5325



144.1620, 11.2591, 28.7989



# Rectangle

The Rectangle color scheme consists of four colors that form a rectangle on the color wheel.



139.9170, -24.1161, 35.1528



136.2950, -24.3024, 1.4953



125.4430, 31.3336, -63.5325



140.6010, 25.3397, -7.5431

# Sweetspot

The Sweet Spot groups the original color and five complimentary colors.



139.9170, -24.1161, 35.1528



218.5690, -9.6475, 14.4100



123.5390, 9.5943, 49.5163



107.5620, -5.7001, 8.2771



245.0000, 0.0000, 0.0000



117.0000, 0.0000, 0.0000



# Same Dimension

The Same Dimension uses a secret algorithm to generate beautiful new colors.



139.9170, -24.1161, 35.1528



172.1940, -37.5636, 55.0809



165.7450, -36.8493, 12.5016



85.0390, -2.4842, 3.4738



83.9020, -41.3637, 60.5989



14.2310, -7.0159, 10.3214



# Inverse Universe

The Inverse Universe completely reimagines the original color for something new.



131.0830, 24.1161, -35.1528



158.8060, 37.5636, -55.0809



105.2550, 36.8493, -12.5016



83.9610, 2.4842, -3.4738



69.0980, 41.3637, -60.5989

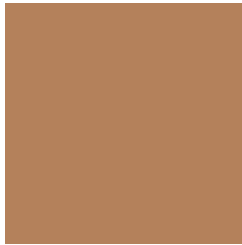


11.7690, 7.0159, -10.3214



# Previews

## White Background



This preview shows how the YUV color 139.9170, -24.1161, 35.1528 looks on a white background.

## Color Contrast Check

Large Text (above 18pt) WCAG AA ✓ Pass

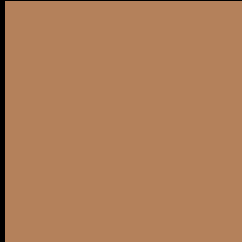
Any Text WCAG AA × Fail

Large Text (above 18pt) WCAG AAA × Fail

Any Text WCAG AAA × Fail



# Black Background



This preview shows how the YUV color 139.9170, -24.1161, 35.1528 looks on a black background.

## Color Contrast Check

Large Text (above 18pt) WCAG AA ✓ Pass

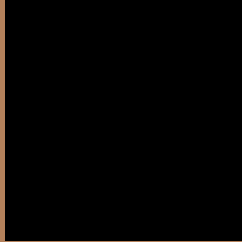
Any Text WCAG AA ✓ Pass

Large Text (above 18pt) WCAG AAA ✓ Pass

Any Text WCAG AAA × Fail

If you want to check with other color combinations, try the [Color Contrast Checker](#).

# YUV 139.9170, -24.1161, 35.1528 Background



This preview shows how black text looks on a background with the YUV color 139.9170, -24.1161, 35.1528.



This preview shows how white text looks on a background with the YUV color 139.9170, -24.1161,



# Color Blindness Simulation

Color vision deficiency is a very complex topic, and I could not describe the different causes any better than Wikipedia does, so if you want to learn more, you should check out their [article about color blindness](#).

## Dichromacy



### Original Color

139.9170, -24.1161, 35.1528

### Protanopia

138.4580, -21.4248, 11.8763

### Deuteranopia

139.4490, -24.3784, 25.9162



## Tritanopia

142.9660, -4.9132, 35.9868

# Trichromacy



## Original Color

139.9170, -24.1161, 35.1528

## Protanomaly

138.9860, -22.1781, 20.1833

## Deuteranomaly

139.4710, -24.3892, 29.4049

## Tritanomaly

142.1310, -11.8966, 35.8421

# Monochromacy



## Original Color

139.9170, -24.1161, 35.1528

## Achromatopsia

140.0000, 0.0000, 0.0000

## Achromatomaly

140.0850, -8.9159, 13.0805

# CSS Examples

## Text

The CSS property to change the color of the text to YUV 139.9170, -24.1161, 35.1528 is called "color". The color property can be set on classes, ids or directly on the HTML element.

This example shows how text in the color `rgb(180, 129, 91)` looks like.

```
.text, #text, p{  
    color:rgb(180, 129, 91)  
}
```

If you want to add a text shadow in that color use the text-shadow property, you can generate a text shadow directly with our [CSS Text Shadow Generator](#).

Here you see how black text with a 4 pixel rgb(180, 129, 91) colored shadow looks like.

```
.shadow{ text-shadow: 4px 4px 2px rgb(180, 129, 91) }
```

## Border

The CSS property to change the border of an element to YUV 139.9170, -24.1161, 35.1528 is called "border".

The border property can be set on classes, ids or directly on the HTML element.

This example shows the color as border, it can be applied via the CSS property "border" or "border-color".

```
.border, #border, table{ border:4px solid rgb(180, 129, 91) }
```



If only the border color should be changed use the property `border-color`.

```
.border{ border-color:rgb(180, 129, 91) }
```

If you want to add a box shadow in that color use:

Here you see how a box with a 4 pixel `rgb(180, 129, 91)` colored shadow looks like.

```
.boxshadow{ -moz-box-shadow:4px 4px 4px  
4px rgb(180, 129, 91); -webkit-box-  
shadow:4px 4px 4px 4px rgb(180, 129, 91);  
box-shadow:4px 4px 4px 4px rgb(180, 129,  
91) }
```

# Background

The CSS property to change the background color of an element to YUV 139.9170, -24.1161, 35.1528 is called "background". The background property can be set on classes, ids or directly on the HTML element.

```
.background, #background, body{  
background: rgb(180, 129, 91) }
```

If only the background color should be changed can be used:

```
.background{ background-color: rgb(180,  
129, 91) }
```

This example shows the color as background, it is applied via the CSS property "background".

To optimize and compress your CSS code, you can use our [online CSS compressor and optimizer](#) based on csstidy. If you want to create a linear or radial gradient as background or border, check our [CSS Gradient Generator](#).

Hey! You found this booklet interesting? Support Converting Colors with the new Membership Option!

The pro membership hides all ads, plus gives you double the colors in the color bucket, and more awesome pro features!

**[Learn more, Memberships starting at \\$2.50/m!](#)**

**Follow me  
on Twitter!**

@ConvertingColor