

# Converting Colors

YUV(140.1010, -23.2208,  
27.9754)

Have a look what the booklet for  
YUV(140.1010, -23.2208, 27.9754)  
contains.

<b>YUV(140.1010, -23.2208, 27.9754)</b> .....	3
<b><i>Conversions</i></b> .....	4
<b><i>Details</i></b> .....	6
<b><i>Harmonies</i></b> .....	12
<b><i>Previews</i></b> .....	24
<b><i>Color Blindness Simulation</i></b> .....	28
<b><i>CSS Examples</i></b> .....	31

# Color

**YUV(140.1010, -23.2208,  
27.9754)**

# Conversions

## Conversions Part 1

<b>Format</b>	<b>Color</b>
Hex	AC855D
RGB	172, 133, 93
RGB Percent	67%, 52%, 36%
CMY	0.3255, 0.4784, 0.6353
CMYK	0.00, 0.23, 0.46, 0.33
HSL	30°, 32%, 52%
HSV	30°, 46%, 67%
XYZ	27.3766, 26.3360, 13.9964
YIQ	140.1010, 36.0840, -4.1720

# Conversions

## Conversions Part 2

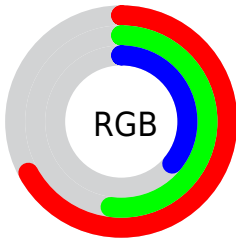
<b>Format</b>	<b>Color</b>
<b>R<sub>YB</sub></b>	170, 172, 93
Decimal	11306333
CIE <sub>Lab</sub>	58.35, 9.71, 27.26
CIE <sub>LCh</sub>	58, 28.939, 70.393
Yxy	26.3360, 0.4043, 0.3890
Android (android.graphics.Color)	4289496413 (0xFFAC855D)
YUV	140.1010, -23.2208, 27.9754
Hunter-Lab	51.3186, 5.4154, 19.7526

# Details

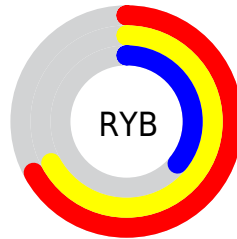
The YUV color  $140.1010, -23.2208, 27.9754$  is a dark color, and the websafe version is hex  $CC9966$ . A complement of this color would be  $124.8990, 23.2208, -27.9754$ , and the grayscale version is  $140.0000, 0.0000, 0.0000$ .

A 20% lighter version of the original color is  $194.0690, -24.6840, 30.6345$ , and  $89.8340, -21.6102, 24.7016$  is the 20% darker color. If you saturate the color by 10%, you get  $133.4670, -28.3312, 33.7934$ , and if you desaturate by 10%, it is  $146.7350, -18.1104, 22.1574$ .

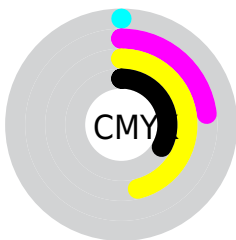
# Distribution



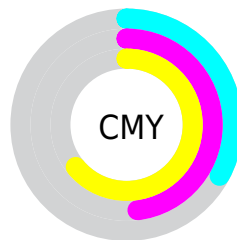
- Red (67%)
- Green (52%)
- Blue (36%)



- Red (67%)
- Yellow (67%)
- Blue (36%)



- Cyan (0%)
- Magenta (23%)
- Yellow (46%)
- Black (33%)



- Cyan (33%)
- Magenta (48%)
- Yellow (64%)

# Brightness & Saturation Gradients

These gradients show how the YUV color 140.1010, -23.2208, 27.9754 changes by changing the brightness by 10 percent. The first figure shows a shift by +10% for each color and the second figure -10%.

Similar to the brightness gradients but the following saturation gradients show a change of the YUV color 140.1010, -23.2208, 27.9754 by changing the saturation by 10% instead.



■ 140.1010,  
-23.2208, 27.9754

■ 140.1010,  
-23.2208, 27.9754

255.0000, 0.0000,  
0.0000

■ 114.3180,  
-22.3418, 26.0311

■ 194.0690,  
-24.6840, 30.6345

■ 89.8340, -21.6102,  
24.7016

■ 221.2430,  
-25.2628, 29.6049

■ 65.1650, -20.2943,  
22.6573

■ 240.8710,  
-21.1354, 12.3911

■ 42.9260, -21.1625,  
21.1129

■ 251.6940,  
-12.6671, 2.8994

■ 23.1240, -11.4001,  
16.5543

■ 2.0930, -1.0318,  
4.3034

■ 0.0000, 0.0000,

0.0000

■ 140.1010,  
-23.2208, 27.9754

■ 140.1010,  
-23.2208, 27.9754

■ 133.4670,  
-28.3312, 33.7934

■ 146.7350,  
-18.1104, 22.1574

■ 126.2460,  
-33.1523, 40.1263

■ 153.9560,  
-13.2893, 15.8246

■ 119.4980,  
-38.6995, 46.0443

■ 160.7040, -7.7421,  
9.9066

■ 112.2770,  
-43.5206, 52.3771

■ 167.9250, -2.9210,  
3.5738

■ 105.6430,  
-48.6310, 58.1951

■ 174.5590, 2.1894,  
-2.2442

■ 102.4970,  
-50.5310, 60.9541

■ 181.7800, 7.0105,  
-8.5771

■ 188.4140, 12.1209,  
-14.3951

■ 195.7490, 17.3787,  
-20.8279

■ 202.3830, 22.4892,  
-26.6459

# Harmonies

## Analogous

The Analogous color harmony consists of three colors that are next to each other on the color wheel.



141.7140, -16.1280, 39.7158



140.1010, -23.2208, 27.9754



138.1650, -23.7453, 9.5023

# Triad

The Triadic color harmony groups three colors that are evenly spaced from another and form a triangle on the color wheel.



140.1010, -23.2208, 27.9754



125.9220, 11.3775, -56.0596



143.6480, 17.4285, 9.9557

# Complementary

The Complementary color scheme is a pair of colors which are on the opposite of each other on the color wheel.



140.1010, -23.2208, 27.9754



124.8990, 23.2208, -27.9754

# Split Complementary

Split-complementary colors differ from the complementary color scheme. The scheme consists of three colors, the original color and two neighbors of the complement color.



139.4210, 24.9354, -17.9092



140.1010, -23.2208, 27.9754



124.3800, 23.4767, -63.4773

# Square

The Square scheme is like the rectangle color scheme, but the four colors are evenly spaced on the color wheel.



140.1010, -23.2208, 27.9754



130.9280, -4.4015, -35.0169



132.1140, 27.0588, -45.7040



143.7340, 7.0331, 30.9283



# Rectangle

The Rectangle color scheme consists of four colors that form a rectangle on the color wheel.



140.1010, -23.2208, 27.9754



135.8150, -19.6288, -4.2228



132.1140, 27.0588, -45.7040



142.6900, 20.3658, 1.1489

# Sweetspot

The Sweet Spot groups the original color and five complimentary colors.



140.1010, -23.2208, 27.9754



211.6610, -9.1999, 10.8213



121.1810, 5.8268, 44.5683



104.5510, -5.6946, 6.5328



240.0000, 0.0000, 0.0000



112.0000, 0.0000, 0.0000



# Same Dimension

The Same Dimension uses a secret algorithm to generate beautiful new colors.



140.1010, -23.2208, 27.9754



174.1710, -36.0733, 43.7000



162.9940, -34.5070, 7.8983



83.0390, -2.4842, 3.4738



89.4620, -44.1048, 53.0918



13.9210, -6.8631, 7.9623



# Inverse Universe

The Inverse Universe completely reimagines the original color for something new.



124.8990, 23.2208, -27.9754



150.8290, 36.0733, -43.7000



102.0060, 34.5070, -7.8983



81.3740, 2.7736, -2.9590



60.5380, 44.1048, -53.0918

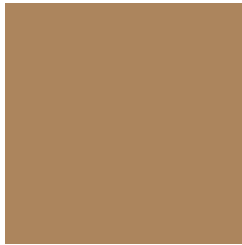


9.0790, 6.8631, -7.9623



# Previews

## White Background



This preview shows how the YUV color 140.1010, -23.2208, 27.9754 looks on a white background.

## Color Contrast Check

Large Text (above 18pt) WCAG AA ✓ Pass

Any Text WCAG AA × Fail

Large Text (above 18pt) WCAG AAA × Fail

Any Text WCAG AAA × Fail



# Black Background



This preview shows how the YUV color 140.1010, -23.2208, 27.9754 looks on a black background.

## Color Contrast Check

Large Text (above 18pt) WCAG AA ✓ Pass

Any Text WCAG AA ✓ Pass

Large Text (above 18pt) WCAG AAA ✓ Pass

Any Text WCAG AAA × Fail

If you want to check with other color combinations, try the [Color Contrast Checker](#).

# YUV 140.1010, -23.2208, 27.9754 Background



This preview shows how black text looks on a background with the YUV color 140.1010, -23.2208, 27.9754.



This preview shows how white text looks on a background with the YUV color 140.1010, -23.2208,

27.9754.

# Color Blindness Simulation

Color vision deficiency is a very complex topic, and I could not describe the different causes any better than Wikipedia does, so if you want to learn more, you should check out their [article about color blindness](#).

## Dichromacy



### Original Color

140.1010, -23.2208, 27.9754

### Protanopia

138.5720, -20.9880, 11.7764

### Deuteranopia

139.7910, -23.0680, 25.6163



## Tritanopia

142.7910, -2.8550, 29.1243

# Trichromacy



## Original Color

140.1010, -23.2208, 27.9754

## Protanomaly

138.7900, -21.5885, 17.7242

## Deuteranomaly

140.0900, -23.2154, 26.2311

## Tritanomaly

141.8420, -10.2751, 29.0796

# Monochromacy



## Original Color

140.1010, -23.2208, 27.9754

## Achromatopsia

140.0000, 0.0000, 0.0000

## Achromatomaly

139.8890, -8.3263, 10.6213

# CSS Examples

## Text

The CSS property to change the color of the text to YUV 140.1010, -23.2208, 27.9754 is called "color". The color property can be set on classes, ids or directly on the HTML element.

This example shows how text in the color `rgb(172, 133, 93)` looks like.

```
.text, #text, p{  
    color:rgb(172, 133, 93)  
}
```

If you want to add a text shadow in that color use the text-shadow property, you can generate a text shadow directly with our [CSS Text Shadow Generator](#).

Here you see how black text with a 4 pixel rgb(172, 133, 93) colored shadow looks like.

```
.shadow{ text-shadow: 4px 4px 2px rgb(172, 133, 93) }
```

## Border

The CSS property to change the border of an element to YUV 140.1010, -23.2208, 27.9754 is called "border".

The border property can be set on classes, ids or directly on the HTML element.

This example shows the color as border, it can be applied via the CSS property "border" or "border-color".

```
.border, #border, table{ border:4px solid rgb(172, 133, 93) }
```



If only the border color should be changed use the property `border-color`.

```
.border{ border-color:rgb(172, 133, 93) }
```

If you want to add a box shadow in that color use:

Here you see how a box with a 4 pixel `rgb(172, 133, 93)` colored shadow looks like.

```
.boxshadow{ -moz-box-shadow:4px 4px 4px  
4px rgb(172, 133, 93); -webkit-box-  
shadow:4px 4px 4px 4px rgb(172, 133, 93);  
box-shadow:4px 4px 4px 4px rgb(172, 133,  
93) }
```

# Background

The CSS property to change the background color of an element to YUV 140.1010, -23.2208, 27.9754 is called "background". The background property can be set on classes, ids or directly on the HTML element.

```
.background, #background, body{  
background: rgb(172, 133, 93) }
```

If only the background color should be changed can be used:

```
.background{ background-color: rgb(172,  
133, 93) }
```

This example shows the color as background, it is applied via the CSS property "background".

To optimize and compress your CSS code, you can use our [online CSS compressor and optimizer](#) based on csstidy. If you want to create a linear or radial gradient as background or border, check our [CSS Gradient Generator](#).

Hey! You found this booklet interesting? Support Converting Colors with the new Membership Option!

The pro membership hides all ads, plus gives you double the colors in the color bucket, and more awesome pro features!

**[Learn more, Memberships starting at \\$2.50/m!](#)**

**Follow me  
on Twitter!**

@ConvertingColor