

Converting Colors

YUV(140.1240, -24.7111,
39.3563)

Have a look what the booklet for
YUV(140.1240, -24.7111, 39.3563)
contains.

YUV(140.1240, -24.7111, 39.3563)	3
<i>Conversions</i>	4
<i>Details</i>	6
<i>Harmonies</i>	12
<i>Previews</i>	24
<i>Color Blindness Simulation</i>	28
<i>CSS Examples</i>	31

Color

**YUV(140.1240, -24.7111,
39.3563)**

Conversions

Conversions Part 1

Format	Color
Hex	B97F5A
RGB	185, 127, 90
RGB Percent	73%, 50%, 35%
CMY	0.2745, 0.5020, 0.6471
CMYK	0.00, 0.31, 0.51, 0.27
HSL	23°, 40%, 54%
HSV	23°, 51%, 73%
XYZ	29.4424, 26.2312, 13.1842
YIQ	140.1240, 46.4450, 0.7890

Conversions

Conversions Part 2

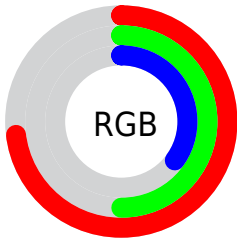
Format	Color
R_{YB}	185, 151, 90
Decimal	12156762
CIE Lab	58.26, 18.24, 29.08
CIE LCh	58, 34.330, 57.902
Yxy	26.2312, 0.4276, 0.3809
Android (android.graphics.Color)	4290346842 (0xFFB97F5A)
YUV	140.1240, -24.7111, 39.3563
Hunter-Lab	51.2164, 12.9843, 20.5890

Details

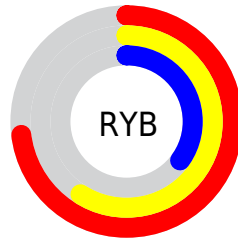
The YUV color **140.1240, -24.7111, 39.3563** is a dark color, and the websafe version is hex **CC9966**. A complement of this color would be **134.8760, 24.7111, -39.3563**, and the grayscale version is **140.0000, 0.0000, 0.0000**.

A 20% lighter version of the original color is **194.3910, -26.3218, 42.6301**, and **89.2590, -22.8057, 34.8529** is the 20% darker color. If you saturate the color by 10%, you get **131.6150, -29.3902, 46.8186**, and if you desaturate by 10%, it is **148.7470, -19.5953, 31.7939**.

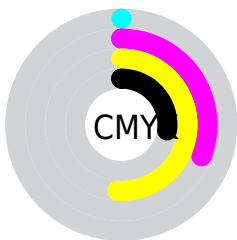
Distribution



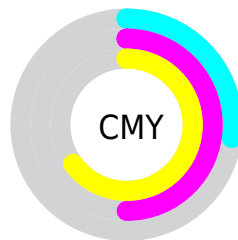
- Red (73%)
- Green (50%)
- Blue (35%)



- Red (73%)
- Yellow (59%)
- Blue (35%)



- Cyan (0%)
- Magenta (31%)
- Yellow (51%)
- Black (27%)



- Cyan (27%)
- Magenta (50%)
- Yellow (65%)

Brightness & Saturation Gradients

These gradients show how the YUV color 140.1240, -24.7111, 39.3563 changes by changing the brightness by 10 percent. The first figure shows a shift by +10% for each color and the second figure -10%.

Similar to the brightness gradients but the following saturation gradients show a change of the YUV color 140.1240, -24.7111, 39.3563 by changing the saturation by 10% instead.

■ 140.1240,
-24.7111, 39.3563

■ 140.1240,
-24.7111, 39.3563

■ 255.0000, 0.0000,
0.0000

■ 114.3410,
-23.8321, 37.4119

■ 194.3910,
-26.3218, 42.6301

■ 89.2590, -22.8057,
34.8529

■ 217.3790,
-24.8368, 32.9936

■ 64.5900, -21.4899,
32.8086

■ 236.8930,
-21.1462, 15.8798

■ 41.5080, -20.4634,
30.2495

■ 251.3520,
-13.9775, 3.1993

■ 21.9940, -10.8430,
24.5613

■ 254.5440, -1.7472,
0.3999

■ 6.8770, -3.3904,
14.1399

■ 0.0000, 0.0000,

0.0000

■ 140.1240,
-24.7111, 39.3563

■ 140.1240,
-24.7111, 39.3563

■ 131.6150,
-29.3902, 46.8186

■ 148.7470,
-19.5953, 31.7939

■ 122.4050,
-34.2167, 54.8958

■ 157.8430,
-15.2056, 23.8167

■ 113.8960,
-38.8957, 62.3582

■ 166.4660,
-10.0897, 16.2543

■ 105.2730,
-44.0116, 69.9206

■ 174.9750, -5.4107,
8.7919

■ 97.5790, -48.1064,
76.6682

■ 183.5980, -0.2948,
1.2296

■ 192.6940, 4.0949,
-6.7476

■ 201.3170, 9.2107,
-14.3100

■ 209.8260, 13.8898,
-21.7724

■ 218.8080, 17.8427,
-29.6496

Harmonies

Analogous

The Analogous color harmony consists of three colors that are next to each other on the color wheel.



141.9370, -14.2659, 49.1673



140.1240, -24.7111, 39.3563



138.1510, -29.1614, 20.0386

Triad

The Triadic color harmony groups three colors that are evenly spaced from another and form a triangle on the color wheel.



140.1240, -24.7111, 39.3563



122.4390, 7.1786, -62.6520



141.9330, 25.1760, -1.6952

Complementary

The Complementary color scheme is a pair of colors which are on the opposite of each other on the color wheel.



140.1240, -24.7111, 39.3563



134.8760, 24.7111, -39.3563

Split Complementary

Split-complementary colors differ from the complementary color scheme. The scheme consists of three colors, the original color and two neighbors of the complement color.



134.5370, 32.2733, -38.1819



140.1240, -24.7111, 39.3563



110.0230, 28.0897, -96.4902

Square

The Square scheme is like the rectangle color scheme, but the four colors are evenly spaced on the color wheel.



140.1240, -24.7111, 39.3563



130.4140, -11.5431, -31.0581



118.3700, 35.3136, -80.1315



143.8460, 13.8799, 28.1991

Rectangle

The Rectangle color scheme consists of four colors that form a rectangle on the color wheel.



140.1240, -24.7111, 39.3563



136.3340, -26.7867, 4.9691



118.3700, 35.3136, -80.1315



140.2520, 27.9768, -13.3760

Sweetspot

The Sweet Spot groups the original color and five complimentary colors.



140.1240, -24.7111, 39.3563



222.9820, -9.3581, 14.9248



125.1310, 11.7674, 52.5051



109.8610, -5.8475, 8.8919



247.0000, 0.0000, 0.0000



120.0000, 0.0000, 0.0000

Same Dimension

The Same Dimension uses a secret algorithm to generate beautiful new colors.



140.1240, -24.7111, 39.3563



169.5970, -38.7483, 61.7434



167.7130, -38.3125, 15.1607



87.4520, -2.1948, 3.9886



82.4510, -40.6483, 64.5025



14.8290, -7.3107, 11.5510

Inverse Universe

The Inverse Universe completely reimagines the original color for something new.



134.8760, 24.7111, -39.3563



161.4030, 38.7483, -61.7434



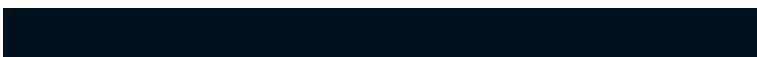
107.2870, 38.3125, -15.1607



86.9610, 2.4842, -3.4738



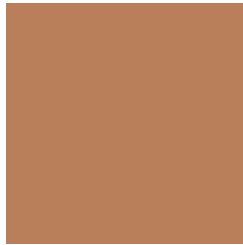
73.5490, 40.6483, -64.5025



13.1710, 7.3107, -11.5510

Previews

White Background



This preview shows how the YUV color 140.1240, -24.7111, 39.3563 looks on a white background.

Color Contrast Check

Large Text (above 18pt) WCAG AA ✓ Pass

Any Text WCAG AA × Fail

Large Text (above 18pt) WCAG AAA × Fail

Any Text WCAG AAA × Fail

Black Background



This preview shows how the YUV color 140.1240, -24.7111, 39.3563 looks on a black background.

Color Contrast Check

Large Text (above 18pt) WCAG AA ✓ Pass

Any Text WCAG AA ✓ Pass

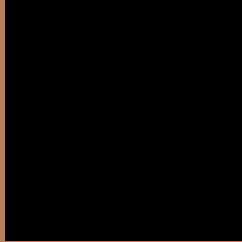
Large Text (above 18pt) WCAG AAA ✓ Pass

Any Text WCAG AAA × Fail

If you want to check with other color combinations, try the [Color Contrast Checker](#).

YUV 140.1240, -24.7111, 39.3563

Background



This preview shows how black text looks on a background with the YUV color 140.1240, -24.7111, 39.3563.



This preview shows how white text looks on a background with the YUV color 140.1240, -24.7111,

39.3563.

Color Blindness Simulation

Color vision deficiency is a very complex topic, and I could not describe the different causes any better than Wikipedia does, so if you want to learn more, you should check out their [article about color blindness](#).

Dichromacy



Original Color

140.1240, -24.7111, 39.3563

Protanopia

138.4580, -21.4248, 11.8763

Deuteranopia

139.3350, -24.8152, 26.0162



Tritanopia

142.7600, -5.7977, 39.6755

Trichromacy



Original Color

140.1240, -24.7111, 39.3563

Protanomaly

138.8830, -22.6203, 22.0276

Deuteranomaly

139.3680, -24.8314, 31.2493

Tritanomaly

141.9250, -12.7810, 39.5308

Monochromacy



Original Color

140.1240, -24.7111, 39.3563

Achromatopsia

140.0000, 0.0000, 0.0000

Achromatomaly

139.7970, -8.7739, 14.2100

CSS Examples

Text

The CSS property to change the color of the text to YUV 140.1240, -24.7111, 39.3563 is called "color". The color property can be set on classes, ids or directly on the HTML element.

This example shows how text in the color `rgb(185, 127, 90)` looks like.

```
.text, #text, p{  
    color:rgb(185, 127, 90)  
}
```

If you want to add a text shadow in that color use the text-shadow property, you can generate a text shadow directly with our [CSS Text Shadow Generator](#).

Here you see how black text with a 4 pixel rgb(185, 127, 90) colored shadow looks like.

```
.shadow{ text-shadow: 4px 4px 2px rgb(185, 127, 90) }
```

Border

The CSS property to change the border of an element to YUV 140.1240, -24.7111, 39.3563 is called "border".

The border property can be set on classes, ids or directly on the HTML element.

This example shows the color as border, it can be applied via the CSS property "border" or "border-color".

```
.border, #border, table{ border:4px solid rgb(185, 127, 90) }
```


If only the border color should be changed use the property border-color.

```
.border{ border-color:rgb(185, 127, 90) }
```

If you want to add a box shadow in that color use:

Here you see how a box with a 4 pixel rgb(185, 127, 90) colored shadow looks like.

```
.boxshadow{ -moz-box-shadow:4px 4px 4px  
4px rgb(185, 127, 90); -webkit-box-  
shadow:4px 4px 4px 4px rgb(185, 127, 90);  
box-shadow:4px 4px 4px 4px rgb(185, 127,  
90) }
```

Background

The CSS property to change the background color of an element to YUV 140.1240, -24.7111, 39.3563 is called "background". The background property can be set on classes, ids or directly on the HTML element.

```
.background, #background, body{  
background: rgb(185, 127, 90) }
```

If only the background color should be changed can be used:

```
.background{ background-color: rgb(185,  
127, 90) }
```

This example shows the color as background, it is applied via the CSS property "background".

To optimize and compress your CSS code, you can use our [online CSS compressor and optimizer](#) based on csstidy. If you want to create a linear or radial gradient as background or border, check our [CSS Gradient Generator](#).

Hey! You found this booklet interesting? Support Converting Colors with the new Membership Option!

The pro membership hides all ads, plus gives you double the colors in the color bucket, and more awesome pro features!

[Learn more, Memberships starting at \\$2.50/m!](#)

**Follow me
on Twitter!**

@ConvertingColor