

Converting Colors

YUV(140.2460, -12.9393,
43.6343)

Have a look what the booklet for
YUV(140.2460, -12.9393, 43.6343)
contains.

YUV(140.2460, -12.9393, 43.6343)	3
<i>Conversions</i>	4
<i>Details</i>	6
<i>Harmonies</i>	12
<i>Previews</i>	24
<i>Color Blindness Simulation</i>	28
<i>CSS Examples</i>	31

Color

**YUV(140.2460, -12.9393,
43.6343)**

Conversions

Conversions Part 1

Format	Color
Hex	BE7872
RGB	190, 120, 114
RGB Percent	75%, 47%, 45%
CMY	0.2549, 0.5294, 0.5529
CMYK	0.00, 0.37, 0.40, 0.25
HSL	5°, 37%, 60%
HSV	5°, 40%, 75%
XYZ	30.9889, 25.5950, 19.2266
YIQ	140.2460, 43.6460, 12.9740

Conversions

Conversions Part 2

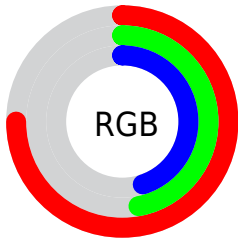
Format	Color
R _Y B	190, 121, 114
Decimal	12482674
CIE Lab	57.65, 26.67, 14.78
CIE LCh	58, 30.494, 28.990
Yxy	25.5950, 0.4088, 0.3376
Android (android.graphics.Color)	4290672754 (0xFFBE7872)
YUV	140.2460, -12.9393, 43.6343
Hunter-Lab	50.5915, 20.8019, 12.8817

Details

The YUV color $140.2460, -12.9393, 43.6343$ is a dark color, and the websafe version is hex 996666 . A complement of this color would be $163.7540, 12.9393, -43.6343$, and the grayscale version is $140.0000, 0.0000, 0.0000$.

A 20% lighter version of the original color is $194.6270, -14.1131, 46.8081$, and $88.6800, -11.1812, 39.7456$ is the 20% darker color. If you saturate the color by 10%, you get $128.1010, -16.3188, 54.2854$, and if you desaturate by 10%, it is $152.9780, -9.8492, 32.4683$.

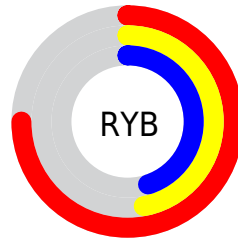
Distribution



Red (75%)

Green (47%)

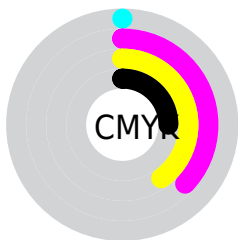
Blue (45%)



Red (75%)

Yellow (47%)

Blue (45%)

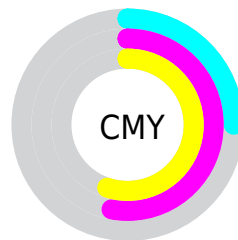


Cyan (0%)

Magenta (37%)

Yellow (40%)

Black (25%)



Cyan (25%)

Magenta (53%)

Yellow (55%)

Brightness & Saturation Gradients

These gradients show how the YUV color 140.2460, -12.9393, 43.6343 changes by changing the brightness by 10 percent. The first figure shows a shift by +10% for each color and the second figure -10%.

Similar to the brightness gradients but the following saturation gradients show a change of the YUV color 140.2460, -12.9393, 43.6343 by changing the saturation by 10% instead.

■ 140.2460,
-12.9393, 43.6343

■ 140.2460,
-12.9393, 43.6343

■ 255.0000, 0.0000,
0.0000

■ 114.3490,
-12.4971, 41.7899

■ 194.6270,
-14.1131, 46.8081

■ 88.6800, -11.1812,
39.7456

■ 216.2340,
-11.4544, 33.9978

■ 64.5980, -10.1548,
37.1866

■ 235.8620, -7.3270,
16.7840

■ 40.9290, -8.8390,
35.1423

■ 254.3160, -2.6208,
0.5999

■ 17.3310, -8.5442,
33.9127

■ 9.0840, -3.9854,
18.3433

■ 0.0000, 0.0000,

0.0000

■ 140.2460,
-12.9393, 43.6343

■ 140.2460,
-12.9393, 43.6343

■ 128.1010,
-16.3188, 54.2854

■ 152.9780, -9.8492,
32.4683

■ 115.3690,
-19.4089, 65.4514

■ 165.1230, -6.4696,
21.8171

■ 103.2240,
-22.7884, 76.1026

■ 177.8550, -3.3795,
10.6512

■ 90.4920, -25.8786,
87.2685

■ 190.0000, 0.0000,
0.0000

■ 77.7600, -28.9687,
98.4345

■ 202.7320, 3.0901,
-11.1660

■ 65.6150, -32.3482,
109.0856

■ 214.8770, 6.4696,
-21.8171

■ 227.6090, 9.5598,
-32.9831

■ 235.5650, 9.5815,
-39.9605

Harmonies

Analogous

The Analogous color harmony consists of three colors that are next to each other on the color wheel.



141.4380, -0.7089, 40.8349



140.2460, -12.9393, 43.6343



138.7860, -22.0795, 35.2677

Triad

The Triadic color harmony groups three colors that are evenly spaced from another and form a triangle on the color wheel.



140.2460, -12.9393, 43.6343



129.8920, -9.8068, -27.9693



134.1420, 28.0310, -30.8195

Complementary

The Complementary color scheme is a pair of colors which are on the opposite of each other on the color wheel.



140.2460, -12.9393, 43.6343



163.7540, 12.9393, -43.6343

Split Complementary

Split-complementary colors differ from the complementary color scheme. The scheme consists of three colors, the original color and two neighbors of the complement color.



124.4820, 28.8494, -60.0587



140.2460, -12.9393, 43.6343



124.5650, 6.1305, -53.1155

Square

The Square scheme is like the rectangle color scheme, but the four colors are evenly spaced on the color wheel.



140.2460, -12.9393, 43.6343



134.0600, -21.2286, -4.4376



119.1680, 21.6092, -71.1843



140.4340, 21.9710, -0.3806

Rectangle

The Rectangle color scheme consists of four colors that form a rectangle on the color wheel.



140.2460, -12.9393, 43.6343



137.2100, -25.2465, 24.3718



119.1680, 21.6092, -71.1843



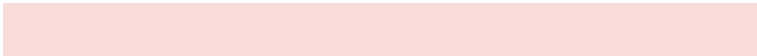
131.6030, 28.7897, -40.8708

Sweetspot

The Sweet Spot groups the original color and five complimentary colors.



140.2460, -12.9393, 43.6343



227.8450, -4.8536, 16.7989



144.8180, 19.8097, 39.6246



113.5560, -3.2321, 10.0364



252.0000, 0.0000, 0.0000



125.0000, 0.0000, 0.0000

Same Dimension

The Same Dimension uses a secret algorithm to generate beautiful new colors.



140.2460, -12.9393, 43.6343



169.5650, -19.9985, 67.9105



161.9650, -23.6467, 24.5867



88.2780, -1.6161, 5.0182



54.2860, -26.7630, 90.9572



10.4430, -5.1484, 18.0285

Inverse Universe

The Inverse Universe completely reimagines the original color for something new.



163.7540, 12.9393, -43.6343



206.4350, 19.9985, -67.9105



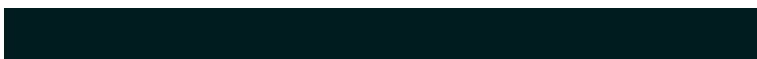
142.0350, 23.6467, -24.5867



91.3090, 1.3267, -5.5330



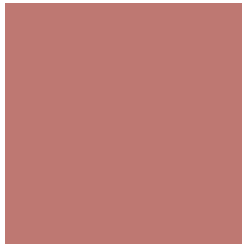
103.7140, 26.7630, -90.9572



19.9700, 5.4378, -17.5137

Previews

White Background



This preview shows how the YUV color 140.2460, -12.9393, 43.6343 looks on a white background.

Color Contrast Check

Large Text (above 18pt) WCAG AA ✓ Pass

Any Text WCAG AA × Fail

Large Text (above 18pt) WCAG AAA × Fail

Any Text WCAG AAA × Fail

Black Background



This preview shows how the YUV color 140.2460, -12.9393, 43.6343 looks on a black background.

Color Contrast Check

Large Text (above 18pt) WCAG AA ✓ Pass

Any Text WCAG AA ✓ Pass

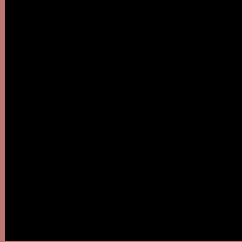
Large Text (above 18pt) WCAG AAA ✓ Pass

Any Text WCAG AAA × Fail

If you want to check with other color combinations, try the [Color Contrast Checker](#).

YUV 140.2460, -12.9393, 43.6343

Background



This preview shows how black text looks on a background with the YUV color 140.2460, -12.9393, 43.6343.



This preview shows how white text looks on a background with the YUV color 140.2460, -12.9393, 43.6343.

Color Blindness Simulation

Color vision deficiency is a very complex topic, and I could not describe the different causes any better than Wikipedia does, so if you want to learn more, you should check out their [article about color blindness](#).

Dichromacy



Original Color

140.2460, -12.9393, 43.6343

Protanopia

138.3830, -7.5838, 5.8031

Deuteranopia

139.2770, -13.4476, 19.9281



Tritanopia

140.8530, -6.8295, 43.9789

Trichromacy



Original Color

140.2460, -12.9393, 43.6343

Protanomaly

138.7160, -9.2270, 19.5431

Deuteranomaly

139.4460, -13.0379, 28.5499

Tritanomaly

140.8700, -9.3029, 43.9640

Monochromacy



Original Color

140.2460, -12.9393, 43.6343

Achromatopsia

140.0000, 0.0000, 0.0000

Achromatomaly

140.2470, -4.5588, 15.5694

CSS Examples

Text

The CSS property to change the color of the text to YUV 140.2460, -12.9393, 43.6343 is called "color". The color property can be set on classes, ids or directly on the HTML element.

This example shows how text in the color `rgb(190, 120, 114)` looks like.

```
.text, #text, p{  
    color:rgb(190, 120, 114)  
}
```

If you want to add a text shadow in that color use the text-shadow property, you can generate a text shadow directly with our [CSS Text Shadow Generator](#).

Here you see how black text with a 4 pixel rgb(190, 120, 114) colored shadow looks like.

```
.shadow{ text-shadow: 4px 4px 2px rgb(190, 120, 114) }
```

Border

The CSS property to change the border of an element to YUV 140.2460, -12.9393, 43.6343 is called "border".

The border property can be set on classes, ids or directly on the HTML element.

This example shows the color as border, it can be applied via the CSS property "border" or "border-color".

```
.border, #border, table{ border:4px solid rgb(190, 120, 114) }
```


If only the border color should be changed use the property `border-color`.

```
.border{ border-color:rgb(190, 120, 114) }
```

If you want to add a box shadow in that color use:

Here you see how a box with a 4 pixel `rgb(190, 120, 114)` colored shadow looks like.

```
.boxshadow{ -moz-box-shadow:4px 4px 4px  
4px rgb(190, 120, 114); -webkit-box-  
shadow:4px 4px 4px 4px rgb(190, 120, 114);  
box-shadow:4px 4px 4px 4px rgb(190, 120,  
114) }
```

Background

The CSS property to change the background color of an element to YUV 140.2460, -12.9393, 43.6343 is called "background". The background property can be set on classes, ids or directly on the HTML element.

```
.background, #background, body{  
background: rgb(190, 120, 114) }
```

If only the background color should be changed can be used:

```
.background{ background-color: rgb(190,  
120, 114) }
```

This example shows the color as background, it is applied via the CSS property "background".

To optimize and compress your CSS code, you can use our [online CSS compressor and optimizer](#) based on csstidy. If you want to create a linear or radial gradient as background or border, check our [CSS Gradient Generator](#).

Hey! You found this booklet interesting? Support Converting Colors with the new Membership Option!

The pro membership hides all ads, plus gives you double the colors in the color bucket, and more awesome pro features!

[Learn more, Memberships starting at \\$2.50/m!](#)

**Follow me
on Twitter!**

@ConvertingColor