

Converting Colors

YUV(140.8150, -9.2758,
35.2422)

Have a look what the booklet for
YUV(140.8150, -9.2758, 35.2422)
contains.

| | |
|--|----|
| YUV(140.8150, -9.2758, 35.2422) | 3 |
| <i>Conversions</i> | 4 |
| <i>Details</i> | 6 |
| <i>Harmonies</i> | 12 |
| <i>Previews</i> | 24 |
| <i>Color Blindness Simulation</i> | 28 |
| <i>CSS Examples</i> | 31 |

Color

**YUV(140.8150, -9.2758,
35.2422)**

Conversions

Conversions Part 1

| Format | Color |
|---------------|--|
| Hex | B57C7A |
| RGB | 181, 124, 122 |
| RGB Percent | 71%, 49%, 48% |
| CMY | 0.2902, 0.5137, 0.5216 |
| CMYK | 0.00, 0.31, 0.33, 0.29 |
| HSL | 2°, 29%, 59% |
| HSV | 2°, 33%, 71% |
| XYZ | 29.7766, 25.6442, 21.7928 |
| YIQ | 140.8150, 34.6140, 11.4620 |

Conversions

Conversions Part 2

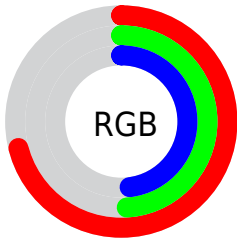
| Format | Color |
|-------------------------------------|-------------------------------|
| R_{YB} | 181, 124, 122 |
| Decimal | 11893882 |
| CIE _{Lab} | 57.70, 21.92, 10.08 |
| CIE _{LCh} | 58, 24.127, 24.683 |
| Yxy | 25.6442, 0.3856, 0.3321 |
| Android (android.graphics.Color) | 4290083962 (0xFFB57C7A) |
| YUV | 140.8150, -9.2758, 35.2422 |
| Hunter-Lab | 50.6401, 16.3384, 9.9328 |

Details

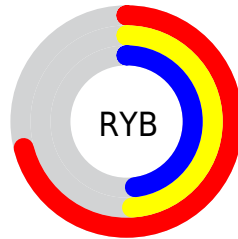
The YUV color $[140.8150, -9.2758, 35.2422]$ is a dark color, and the websafe version is hex 996666 . A complement of this color would be $[162.1850, 9.2758, -35.2422]$, and the grayscale version is $[141.0000, 0.0000, 0.0000]$.

A 20% lighter version of the original color is $[194.8970, -10.3022, 37.8013]$, and $[89.4340, -8.1020, 32.0684]$ is the 20% darker color. If you saturate the color by 10%, you get $[128.7840, -12.2185, 45.7934]$, and if you desaturate by 10%, it is $[152.8460, -6.3331, 24.6911]$.

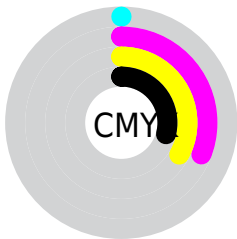
Distribution



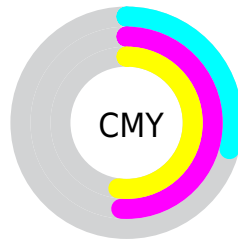
- Red (71%)
- Green (49%)
- Blue (48%)



- Red (71%)
- Yellow (49%)
- Blue (48%)



- Cyan (0%)
- Magenta (31%)
- Yellow (33%)
- Black (29%)




- Cyan (29%)
- Magenta (51%)
- Yellow (52%)

Brightness & Saturation Gradients


These gradients show how the YUV color 140.8150, -9.2758, 35.2422 changes by changing the brightness by 10 percent. The first figure shows a shift by +10% for each color and the second figure -10%.

Similar to the brightness gradients but the following saturation gradients show a change of the YUV color 140.8150, -9.2758, 35.2422 by changing the saturation by 10% instead.


 140.8150, -9.2758,
35.2422


 140.8150, -9.2758,
35.2422


255.0000, 0.0000,
0.0000

 114.9180, -8.8336,
33.3979


 194.8970,
-10.3022, 37.8013


 89.4340, -8.1020,
32.0684


 219.6080, -8.6807,
31.0388

 65.6510, -7.2229,
30.1241

 239.2360, -4.5533,
13.8250

 42.8680, -6.3439,
28.1798

 19.9280, -7.3595,
27.2501

 7.5890, -3.2484,
15.2694

 0.0000, 0.0000,

0.0000

■ 140.8150, -9.2758,
35.2422

■ 140.8150, -9.2758,
35.2422

■ 128.7840,
-12.2185, 45.7934

■ 152.8460, -6.3331,
24.6911

■ 116.1660,
-14.8718, 56.8594

■ 165.4640, -3.6798,
13.6251

■ 104.1350,
-17.8146, 67.4106

■ 177.4950, -0.7370,
3.0739

■ 91.5170, -20.4679,
78.4766

■ 190.1130, 1.9163,
-7.9921

■ 79.3720, -23.8474,
89.1278

■ 202.2580, 5.2958,
-18.6433

■ 66.7540, -26.5007,
100.1937

■ 214.8760, 7.9491,
-29.7093

■ 57.6410, -28.4170,
108.1858

■ 226.9070, 10.8918,
-40.2604

■ 232.8740, 10.9081,
-45.4935

Harmonies

Analogous

The Analogous color harmony consists of three colors that are next to each other on the color wheel.



141.4260, 0.7760, 31.1984



140.8150, -9.2758, 35.2422



139.4200, -16.9691, 29.4497

Triad

The Triadic color harmony groups three colors that are evenly spaced from another and form a triangle on the color wheel.



140.8150, -9.2758, 35.2422



133.0610, -9.3971, -19.3475



135.5680, 21.9050, -25.9311

Complementary

The Complementary color scheme is a pair of colors which are on the opposite of each other on the color wheel.



140.8150, -9.2758, 35.2422



162.1850, 9.2758, -35.2422

Split Complementary

Split-complementary colors differ from the complementary color scheme. The scheme consists of three colors, the original color and two neighbors of the complement color.



130.1160, 20.6488, -43.0747



140.8150, -9.2758, 35.2422



129.6380, 2.1505, -36.5165

Square

The Square scheme is like the rectangle color scheme, but the four colors are evenly spaced on the color wheel.



140.8150, -9.2758, 35.2422



135.7060, -17.6031, -0.6192



127.8460, 13.3869, -47.2229



140.3860, 18.0507, -2.9695

Rectangle

The Rectangle color scheme consists of four colors that form a rectangle on the color wheel.



140.8150, -9.2758, 35.2422



138.5670, -19.9995, 21.4277



127.8460, 13.3869, -47.2229



133.9370, 22.2161, -32.3937

Sweetspot

The Sweet Spot groups the original color and five complimentary colors.



140.8150, -9.2758, 35.2422



218.7630, -3.8272, 14.2398



146.1390, 16.2005, 30.5731



107.7730, -2.3531, 8.0921



245.0000, 0.0000, 0.0000



117.0000, 0.0000, 0.0000

Same Dimension

The Same Dimension uses a secret algorithm to generate beautiful new colors.



140.8150, -9.2758, 35.2422



172.2690, -14.4296, 55.0151



157.8380, -17.6681, 20.3131



83.2780, -1.6161, 5.0182



48.6820, -24.0002, 91.4869



8.3610, -4.1220, 15.4694

Inverse Universe

The Inverse Universe completely reimagines the original color for something new.



162.1850, 9.2758, -35.2422



205.1440, 14.7190, -54.5003



145.1620, 17.6681, -20.3131



86.3090, 1.3267, -5.5330



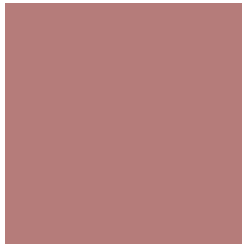
104.3180, 24.0002, -91.4869



17.6390, 4.1220, -15.4694

Previews

White Background



This preview shows how the YUV color 140.8150, -9.2758, 35.2422 looks on a white background.

Color Contrast Check

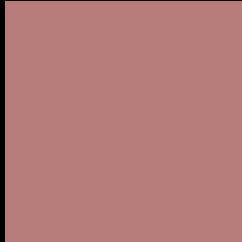
Large Text (above 18pt) WCAG AA ✓ Pass

Any Text WCAG AA ✗ Fail

Large Text (above 18pt) WCAG AAA ✗ Fail

Any Text WCAG AAA ✗ Fail

Black Background



This preview shows how the YUV color 140.8150, -9.2758, 35.2422 looks on a black background.

Color Contrast Check

Large Text (above 18pt) WCAG AA ✓ Pass

Any Text WCAG AA ✓ Pass

Large Text (above 18pt) WCAG AAA ✓ Pass

Any Text WCAG AAA × Fail

If you want to check with other color combinations, try the [Color Contrast Checker](#).

YUV 140.8150, -9.2758, 35.2422

Background



This preview shows how black text looks on a background with the YUV color 140.8150, -9.2758, 35.2422.



This preview shows how white text looks on a background with the YUV color 140.8150, -9.2758,

Color Blindness Simulation

Color vision deficiency is a very complex topic, and I could not describe the different causes any better than Wikipedia does, so if you want to learn more, you should check out their [article about color blindness](#).

Dichromacy



Original Color

140.8150, -9.2758, 35.2422

Protanopia

138.8820, -4.3788, 4.4885

Deuteranopia

139.8790, -9.8003, 16.7691



Tritanopia

141.0800, -4.4764, 35.8868

Trichromacy



Original Color

140.8150, -9.2758, 35.2422

Protanomaly

139.4920, -6.1586, 15.3545

Deuteranomaly

140.0370, -9.3852, 23.6466

Tritanomaly

141.2110, -6.5130, 35.7720

Monochromacy



Original Color

140.8150, -9.2758, 35.2422

Achromatopsia

141.0000, 0.0000, 0.0000

Achromatomaly

141.1650, -3.5323, 13.0103

CSS Examples

Text

The CSS property to change the color of the text to YUV 140.8150, -9.2758, 35.2422 is called "color". The color property can be set on classes, ids or directly on the HTML element.

This example shows how text in the color `rgb(181, 124, 122)` looks like.

```
.text, #text, p{  
    color:rgb(181, 124, 122)  
}
```

If you want to add a text shadow in that color use the text-shadow property, you can generate a text shadow directly with our [CSS Text Shadow Generator](#).

Here you see how black text with a 4 pixel rgb(181, 124, 122) colored shadow looks like.

```
.shadow{ text-shadow: 4px 4px 2px rgb(181, 124, 122) }
```

Border

The CSS property to change the border of an element to YUV 140.8150, -9.2758, 35.2422 is called "border". The border property can be set on classes, ids or directly on the HTML element.

This example shows the color as border, it can be applied via the CSS property "border" or "border-color".

```
.border, #border, table{ border:4px solid rgb(181, 124, 122) }
```


If only the border color should be changed use the property `border-color`.

```
.border{ border-color:rgb(181, 124, 122) }
```

If you want to add a box shadow in that color use:

Here you see how a box with a 4 pixel `rgb(181, 124, 122)` colored shadow looks like.

```
.boxshadow{ -moz-box-shadow:4px 4px 4px  
4px rgb(181, 124, 122); -webkit-box-  
shadow:4px 4px 4px 4px rgb(181, 124, 122);  
box-shadow:4px 4px 4px 4px rgb(181, 124,  
122) }
```

Background

The CSS property to change the background color of an element to YUV 140.8150, -9.2758, 35.2422 is called "background". The background property can be set on classes, ids or directly on the HTML element.

```
.background, #background, body{  
background: rgb(181, 124, 122) }
```

If only the background color should be changed can be used:

```
.background{ background-color: rgb(181,  
124, 122) }
```

This example shows the color as background, it is applied via the CSS property "background".

To optimize and compress your CSS code, you can use our [online CSS compressor and optimizer](#) based on csstidy. If you want to create a linear or radial gradient as background or border, check our [CSS Gradient Generator](#).

Hey! You found this booklet interesting? Support Converting Colors with the new Membership Option!

The pro membership hides all ads, plus gives you double the colors in the color bucket, and more awesome pro features!

[Learn more, Memberships starting at \\$2.50/m!](#)

**Follow me
on Twitter!**

@ConvertingColor