

Converting Colors

YUV(140.8710, -17.6844,
25.5461)

Have a look what the booklet for
YUV(140.8710, -17.6844, 25.5461)
contains.

YUV(140.8710, -17.6844, 25.5461)	3
<i>Conversions</i>	4
<i>Details</i>	6
<i>Harmonies</i>	12
<i>Previews</i>	24
<i>Color Blindness Simulation</i>	28
<i>CSS Examples</i>	31

Color

**YUV(140.8710, -17.6844,
25.5461)**

Conversions

Conversions Part 1

Format	Color
Hex	AA8569
RGB	170, 133, 105
RGB Percent	67%, 52%, 41%
CMY	0.3333, 0.4784, 0.5882
CMYK	0.00, 0.22, 0.38, 0.33
HSL	26°, 28%, 54%
HSV	26°, 38%, 67%
XYZ	27.5149, 26.3410, 16.9987
YIQ	140.8710, 31.0400, -0.8640

Conversions

Conversions Part 2

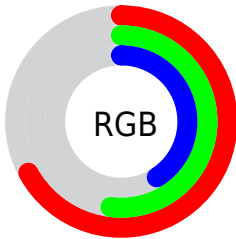
Format	Color
R_{YB}	170, 154, 105
Decimal	11175273
CIE _{Lab}	58.36, 10.25, 20.51
CIE _{LCh}	58, 22.930, 63.460
Yxy	26.3410, 0.3883, 0.3718
Android (android.graphics.Color)	4289365353 (0xFFAA8569)
YUV	140.8710, -17.6844, 25.5461
Hunter-Lab	51.3235, 5.8790, 16.2892

Details

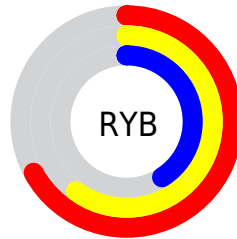
The YUV color $140.8710, -17.6844, 25.5461$ is a dark color, and the websafe version is hex $CC9966$. A complement of this color would be $134.1290, 17.6844, -25.5461$, and the grayscale version is $141.0000, 0.0000, 0.0000$.

A 20% lighter version of the original color is $194.5400, -19.0002, 27.5904$, and $90.0170, -15.7844, 22.7871$ is the 20% darker color. If you saturate the color by 10%, you get $133.0630, -22.2161, 32.3937$, and if you desaturate by 10%, it is $148.6790, -13.1527, 18.6985$.

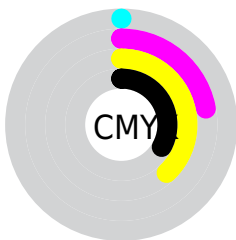
Distribution



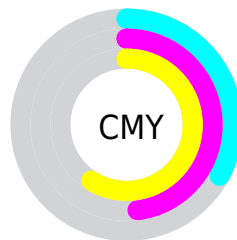
- Red (67%)
- Green (52%)
- Blue (41%)



- Red (67%)
- Yellow (60%)
- Blue (41%)



- Cyan (0%)
- Magenta (22%)
- Yellow (38%)
- Black (33%)



- Cyan (33%)
- Magenta (48%)
- Yellow (59%)

Brightness & Saturation Gradients

These gradients show how the YUV color 140.8710, -17.6844, 25.5461 changes by changing the brightness by 10 percent. The first figure shows a shift by +10% for each color and the second figure -10%.

Similar to the brightness gradients but the following saturation gradients show a change of the YUV color 140.8710, -17.6844, 25.5461 by changing the saturation by 10% instead.

■ 140.8710,
-17.6844, 25.5461

■ 140.8710,
-17.6844, 25.5461

255.0000, 0.0000,
0.0000

■ 115.3870,
-16.9528, 24.2166

■ 194.5400,
-19.0002, 27.5904

■ 90.0170, -15.7844,
22.7871

■ 222.7250,
-19.5844, 28.3052

■ 66.5330, -15.0528,
21.4576

■ 242.3530,
-15.4570, 11.0914

■ 43.7500, -14.1737,
19.5133

■ 253.1760, -6.9888,
1.5996

■ 23.1240, -11.4001,
16.5543

■ 2.3920, -1.1793,
4.9182

■ 0.0000, 0.0000,

0.0000

■ 140.8710,
-17.6844, 25.5461

■ 140.8710,
-17.6844, 25.5461

■ 133.0630,
-22.2161, 32.3937

■ 148.6790,
-13.1527, 18.6985

■ 125.8420,
-27.0371, 38.7266

■ 155.9000, -8.3317,
12.3657

■ 118.0340,
-31.5688, 45.5742

■ 163.7080, -3.8000,
5.5181

■ 110.2260,
-36.1004, 52.4218

■ 171.5160, 0.7316,
-1.3295

■ 103.0050,
-40.9215, 58.7546

■ 178.7370, 5.5527,
-7.6623

■ 95.1970, -45.4531,
65.6022

■ 186.5450, 10.0843,
-14.5100

■ 93.6810, -46.1847,
66.9318

■ 194.3530, 14.6160,
-21.3576

■ 201.5740, 19.4370,
-27.6904

■ 209.0400, 22.6583,
-34.2381

Harmonies

Analogous

The Analogous color harmony consists of three colors that are next to each other on the color wheel.



142.5220, -11.5963, 32.8682



140.8710, -17.6844, 25.5461



139.3270, -19.3882, 11.9912

Triad

The Triadic color harmony groups three colors that are evenly spaced from another and form a triangle on the color wheel.



140.8710, -17.6844, 25.5461



131.7240, 5.0661, -38.3459



142.1480, 15.7030, 3.3782

Complementary

The Complementary color scheme is a pair of colors which are on the opposite of each other on the color wheel.



140.8710, -17.6844, 25.5461



134.1290, 17.6844, -25.5461

Split Complementary

Split-complementary colors differ from the complementary color scheme. The scheme consists of three colors, the original color and two neighbors of the complement color.



138.8680, 20.2781, -17.4242



140.8710, -17.6844, 25.5461



131.0250, 15.2707, -44.7489

Square

The Square scheme is like the rectangle color scheme, but the four colors are evenly spaced on the color wheel.



140.8710, -17.6844, 25.5461



134.2500, -6.0393, -23.0212



133.8610, 20.7745, -36.7121



143.4940, 7.6445, 21.4918

Rectangle

The Rectangle color scheme consists of four colors that form a rectangle on the color wheel.



140.8710, -17.6844, 25.5461



137.5320, -17.0243, 0.4104



133.8610, 20.7745, -36.7121



141.8590, 17.3245, -3.3843

Sweetspot

The Sweet Spot groups the original color and five complimentary colors.



140.8710, -17.6844, 25.5461



210.9320, -6.8685, 9.7066



128.7670, 7.0169, 36.1613



105.7080, -3.8000, 5.5181



240.0000, 0.0000, 0.0000



112.0000, 0.0000, 0.0000

Same Dimension

The Same Dimension uses a secret algorithm to generate beautiful new colors.



140.8710, -17.6844, 25.5461



176.3260, -27.7687, 40.0561



159.6550, -26.9449, 9.0726



80.1530, -2.0474, 3.3738



81.8200, -40.3373, 58.0399



11.2630, -5.5527, 7.6623

Inverse Universe

The Inverse Universe completely reimagines the original color for something new.



134.1290, 17.6844, -25.5461



165.6740, 27.7687, -40.0561



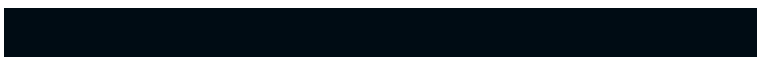
115.3450, 26.9449, -9.0726



79.8470, 2.0474, -3.3738



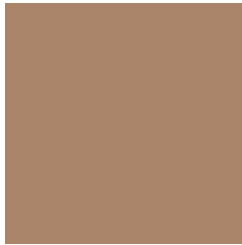
66.1800, 40.3373, -58.0399



9.3240, 5.2633, -8.1771

Previews

White Background



This preview shows how the YUV color 140.8710, -17.6844, 25.5461 looks on a white background.

Color Contrast Check

Large Text (above 18pt) WCAG AA ✓ Pass

Any Text WCAG AA × Fail

Large Text (above 18pt) WCAG AAA × Fail

Any Text WCAG AAA × Fail

Black Background



This preview shows how the YUV color 140.8710, -17.6844, 25.5461 looks on a black background.

Color Contrast Check

Large Text (above 18pt) WCAG AA ✓ Pass

Any Text WCAG AA ✓ Pass

Large Text (above 18pt) WCAG AAA ✓ Pass

Any Text WCAG AAA × Fail

If you want to check with other color combinations, try the [Color Contrast Checker](#).

YUV 140.8710, -17.6844, 25.5461

Background



This preview shows how black text looks on a background with the YUV color 140.8710, -17.6844, 25.5461.



This preview shows how white text looks on a background with the YUV color 140.8710, -17.6844,

Color Blindness Simulation

Color vision deficiency is a very complex topic, and I could not describe the different causes any better than Wikipedia does, so if you want to learn more, you should check out their [article about color blindness](#).

Dichromacy



Original Color

140.8710, -17.6844, 25.5461

Protanopia

139.3420, -15.4516, 9.3471

Deuteranopia

140.8490, -17.6736, 22.0574



Tritanopia

142.5950, -2.2653, 26.6652

Trichromacy



Original Color

140.8710, -17.6844, 25.5461

Protanomaly

139.5600, -16.0521, 15.2949

Deuteranomaly

140.5610, -17.5316, 23.1870

Tritanomaly

142.1020, -7.9383, 26.2205

Monochromacy



Original Color

140.8710, -17.6844, 25.5461

Achromatopsia

141.0000, 0.0000, 0.0000

Achromatomaly

141.0460, -6.4317, 9.6067

CSS Examples

Text

The CSS property to change the color of the text to YUV 140.8710, -17.6844, 25.5461 is called "color". The color property can be set on classes, ids or directly on the HTML element.

This example shows how text in the color `rgb(170, 133, 105)` looks like.

```
.text, #text, p{  
    color:rgb(170, 133, 105)  
}
```

If you want to add a text shadow in that color use the text-shadow property, you can generate a text shadow directly with our [CSS Text Shadow Generator](#).

Here you see how black text with a 4 pixel rgb(170, 133, 105) colored shadow looks like.

```
.shadow{ text-shadow: 4px 4px 2px rgb(170, 133, 105) }
```

Border

The CSS property to change the border of an element to YUV 140.8710, -17.6844, 25.5461 is called "border".

The border property can be set on classes, ids or directly on the HTML element.

This example shows the color as border, it can be applied via the CSS property "border" or "border-color".

```
.border, #border, table{ border:4px solid rgb(170, 133, 105) }
```


If only the border color should be changed use the property border-color.

```
.border{ border-color:rgb(170, 133, 105) }
```

If you want to add a box shadow in that color use:

Here you see how a box with a 4 pixel rgb(170, 133, 105) colored shadow looks like.

```
.boxshadow{ -moz-box-shadow:4px 4px 4px  
4px rgb(170, 133, 105); -webkit-box-  
shadow:4px 4px 4px 4px rgb(170, 133, 105);  
box-shadow:4px 4px 4px 4px rgb(170, 133,  
105) }
```

Background

The CSS property to change the background color of an element to YUV 140.8710, -17.6844, 25.5461 is called "background". The background property can be set on classes, ids or directly on the HTML element.

```
.background, #background, body{  
background: rgb(170, 133, 105) }
```

If only the background color should be changed can be used:

```
.background{ background-color: rgb(170,  
133, 105) }
```

This example shows the color as background, it is applied via the CSS property "background".

To optimize and compress your CSS code, you can use our [online CSS compressor and optimizer](#) based on csstidy. If you want to create a linear or radial gradient as background or border, check our [CSS Gradient Generator](#).

Hey! You found this booklet interesting? Support Converting Colors with the new Membership Option!

The pro membership hides all ads, plus gives you double the colors in the color bucket, and more awesome pro features!

[Learn more, Memberships starting at \\$2.50/m!](#)

**Follow me
on Twitter!**

@ConvertingColor