

Converting Colors

YUV(140.9080, -13.7586,
26.3907)

Have a look what the booklet for
YUV(140.9080, -13.7586, 26.3907)
contains.

YUV(140.9080, -13.7586, 26.3907)	3
<i>Conversions</i>	4
<i>Details</i>	6
<i>Harmonies</i>	12
<i>Previews</i>	24
<i>Color Blindness Simulation</i>	28
<i>CSS Examples</i>	31

Color

**YUV(140.9080, -13.7586,
26.3907)**

Conversions

Conversions Part 1

Format	Color
Hex	AB8371
RGB	171, 131, 113
RGB Percent	67%, 51%, 44%
CMY	0.3294, 0.4863, 0.5569
CMYK	0.00, 0.23, 0.34, 0.33
HSL	19°, 26%, 56%
HSV	19°, 34%, 67%
XYZ	27.8915, 26.0828, 19.1872
YIQ	140.9080, 29.6180, 2.8820

Conversions

Conversions Part 2

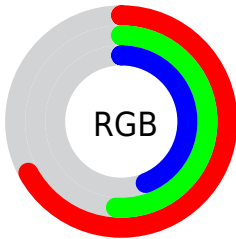
Format	Color
R_{YB}	171, 139, 113
Decimal	11240305
CIE _{Lab}	58.12, 12.80, 15.66
CIE _{LCh}	58, 20.223, 50.736
Yxy	26.0828, 0.3812, 0.3565
Android (android.graphics.Color)	4289430385 (0xFFAB8371)
YUV	140.9080, -13.7586, 26.3907
Hunter-Lab	51.0713, 8.1093, 13.4750

Details

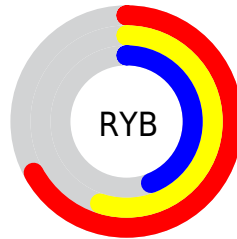
The YUV color $140.9080, -13.7586, 26.3907$ is a dark color, and the websafe version is hex $CC9999$. A complement of this color would be $143.0920, 13.7586, -26.3907$, and the grayscale version is $141.0000, 0.0000, 0.0000$.

A 20% lighter version of the original color is $194.6910, -14.6377, 28.3350$, and $90.5270, -12.5848, 23.2168$ is the 20% darker color. If you saturate the color by 10%, you get $131.9260, -17.7115, 34.2679$, and if you desaturate by 10%, it is $149.8900, -9.8058, 18.5135$.

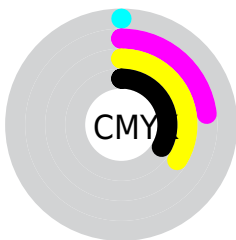
Distribution



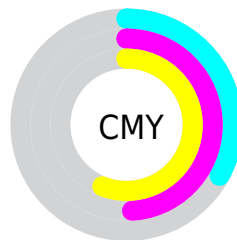
- Red (67%)
- Green (51%)
- Blue (44%)



- Red (67%)
- Yellow (55%)
- Blue (44%)



- Cyan (0%)
- Magenta (23%)
- Yellow (34%)
- Black (33%)



- Cyan (33%)
- Magenta (49%)
- Yellow (56%)

Brightness & Saturation Gradients

These gradients show how the YUV color 140.9080, -13.7586, 26.3907 changes by changing the brightness by 10 percent. The first figure shows a shift by +10% for each color and the second figure -10%.

Similar to the brightness gradients but the following saturation gradients show a change of the YUV color 140.9080, -13.7586, 26.3907 by changing the saturation by 10% instead.

■ 140.9080,
-13.7586, 26.3907

■ 140.9080,
-13.7586, 26.3907

■ 255.0000, 0.0000,
0.0000

■ 115.3100,
-13.4638, 25.1611

■ 194.6910,
-14.6377, 28.3350

■ 90.5270, -12.5848,
23.2168

■ 222.5770,
-15.0745, 28.4350

■ 66.4560, -11.5638,
22.4021

■ 242.2050,
-10.9471, 11.2212

■ 44.2600, -10.9742,
19.9430

■ 254.2020, -3.0576,
0.6998

■ 22.5480, -11.1162,
18.8134

■ 3.5880, -1.7689,
7.3773

■ 0.0000, 0.0000,

0.0000

■ 140.9080,
-13.7586, 26.3907

■ 140.9080,
-13.7586, 26.3907

■ 131.9260,
-17.7115, 34.2679

■ 149.8900, -9.8058,
18.5135

■ 122.9440,
-21.6644, 42.1451

■ 158.8720, -5.8529,
10.6363

■ 114.5490,
-25.9067, 49.5075

■ 167.2670, -1.6106,
3.2738

■ 105.5670,
-29.8595, 57.3847

■ 176.2490, 2.3422,
-4.6034

■ 96.4710, -34.2492,
65.3619

■ 185.2310, 6.2951,
-12.4806

■ 87.4890, -38.2021,
73.2391

■ 194.3270, 10.6848,
-20.4578

■ 82.2400, -40.5443,
77.8425

■ 203.3090, 14.6377,
-28.3350

■ 211.7040, 18.8799,
-35.6974

■ 219.3180, 17.5912,
-42.3749

Harmonies

Analogous

The Analogous color harmony consists of three colors that are next to each other on the color wheel.



141.7650, -6.7861, 30.0241



140.9080, -13.7586, 26.3907



139.6310, -17.0731, 16.1096

Triad

The Triadic color harmony groups three colors that are evenly spaced from another and form a triangle on the color wheel.



140.9080, -13.7586, 26.3907



132.8240, 0.0868, -27.9096



140.5060, 16.0195, -4.8288

Complementary

The Complementary color scheme is a pair of colors which are on the opposite of each other on the color wheel.



140.9080, -13.7586, 26.3907



143.0920, 13.7586, -26.3907

Split Complementary

Split-complementary colors differ from the complementary color scheme. The scheme consists of three colors, the original color and two neighbors of the complement color.



136.9660, 18.2578, -22.7722



140.9080, -13.7586, 26.3907



132.2880, 9.7180, -37.0866

Square

The Square scheme is like the rectangle color scheme, but the four colors are evenly spaced on the color wheel.



140.9080, -13.7586, 26.3907



135.5070, -9.1240, -13.5996



133.0200, 16.2591, -35.0975



142.3080, 9.7082, 12.8849

Rectangle

The Rectangle color scheme consists of four colors that form a rectangle on the color wheel.



140.9080, -13.7586, 26.3907



138.3910, -16.4618, 6.6731



133.0200, 16.2591, -35.0975



139.4020, 17.0568, -10.8766

Sweetspot

The Sweet Spot groups the original color and five complimentary colors.



140.9080, -13.7586, 26.3907



210.6870, -5.2687, 9.9215



135.0160, 9.3591, 31.5580



105.2350, -3.0739, 5.9329



240.0000, 0.0000, 0.0000



112.0000, 0.0000, 0.0000

Same Dimension

The Same Dimension uses a secret algorithm to generate beautiful new colors.



140.9080, -13.7586, 26.3907



174.6450, -21.5170, 41.5303



157.3440, -21.8616, 11.9763



82.4520, -2.1948, 3.9886



72.4390, -35.7124, 68.0210



10.9860, -5.4161, 10.5363

Inverse Universe

The Inverse Universe completely reimagines the original color for something new.



143.0920, 13.7586, -26.3907



178.3550, 21.5170, -41.5303



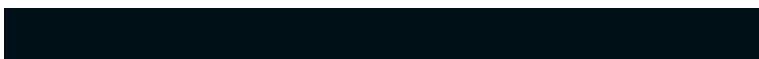
126.6560, 21.8616, -11.9763



82.5480, 2.1948, -3.9886



78.1480, 35.4230, -68.5358



12.0140, 5.4161, -10.5363

Previews

White Background



This preview shows how the YUV color 140.9080, -13.7586, 26.3907 looks on a white background.

Color Contrast Check

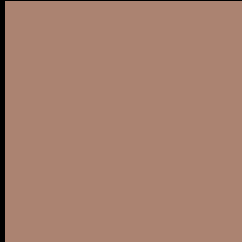
Large Text (above 18pt) WCAG AA ✓ Pass

Any Text WCAG AA × Fail

Large Text (above 18pt) WCAG AAA × Fail

Any Text WCAG AAA × Fail

Black Background



This preview shows how the YUV color 140.9080, -13.7586, 26.3907 looks on a black background.

Color Contrast Check

Large Text (above 18pt) WCAG AA ✓ Pass

Any Text WCAG AA ✓ Pass

Large Text (above 18pt) WCAG AAA ✓ Pass

Any Text WCAG AAA × Fail

If you want to check with other color combinations, try the [Color Contrast Checker](#).

YUV 140.9080, -13.7586, 26.3907

Background



This preview shows how black text looks on a background with the YUV color 140.9080, -13.7586, 26.3907.



This preview shows how white text looks on a background with the YUV color 140.9080, -13.7586, 26.3907.

Color Blindness Simulation

Color vision deficiency is a very complex topic, and I could not describe the different causes any better than Wikipedia does, so if you want to learn more, you should check out their [article about color blindness](#).

Dichromacy



Original Color

140.9080, -13.7586, 26.3907

Protanopia

139.7700, -11.2256, 7.2177

Deuteranopia

140.1630, -13.8844, 20.0280



Tritanopia

142.7800, -2.8495, 27.3799

Trichromacy



Original Color

140.9080, -13.7586, 26.3907

Protanomaly

140.2870, -11.9735, 13.7803

Deuteranomaly

140.4730, -14.0372, 22.3872

Tritanomaly

142.0420, -6.9227, 27.1502

Monochromacy



Original Color

140.9080, -13.7586, 26.3907

Achromatopsia

141.0000, 0.0000, 0.0000

Achromatomaly

140.8010, -4.8319, 9.8215

CSS Examples

Text

The CSS property to change the color of the text to YUV 140.9080, -13.7586, 26.3907 is called "color". The color property can be set on classes, ids or directly on the HTML element.

This example shows how text in the color `rgb(171, 131, 113)` looks like.

```
.text, #text, p{  
    color:rgb(171, 131, 113)  
}
```

If you want to add a text shadow in that color use the text-shadow property, you can generate a text shadow directly with our [CSS Text Shadow Generator](#).

Here you see how black text with a 4 pixel rgb(171, 131, 113) colored shadow looks like.

```
.shadow{ text-shadow: 4px 4px 2px rgb(171, 131, 113) }
```

Border

The CSS property to change the border of an element to YUV 140.9080, -13.7586, 26.3907 is called "border".

The border property can be set on classes, ids or directly on the HTML element.

This example shows the color as border, it can be applied via the CSS property "border" or "border-color".

```
.border, #border, table{ border:4px solid rgb(171, 131, 113) }
```


If only the border color should be changed use the property `border-color`.

```
.border{ border-color:rgb(171, 131, 113) }
```

If you want to add a box shadow in that color use:

Here you see how a box with a 4 pixel `rgb(171, 131, 113)` colored shadow looks like.

```
.boxshadow{ -moz-box-shadow:4px 4px 4px 4px rgb(171, 131, 113); -webkit-box-shadow:4px 4px 4px 4px rgb(171, 131, 113); box-shadow:4px 4px 4px 4px rgb(171, 131, 113) }
```

Background

The CSS property to change the background color of an element to YUV 140.9080, -13.7586, 26.3907 is called "background". The background property can be set on classes, ids or directly on the HTML element.

```
.background, #background, body{  
background: rgb(171, 131, 113) }
```

If only the background color should be changed can be used:

```
.background{ background-color: rgb(171,  
131, 113) }
```

This example shows the color as background, it is applied via the CSS property "background".

To optimize and compress your CSS code, you can use our [online CSS compressor and optimizer](#) based on csstidy. If you want to create a linear or radial gradient as background or border, check our [CSS Gradient Generator](#).

Hey! You found this booklet interesting? Support Converting Colors with the new Membership Option!

The pro membership hides all ads, plus gives you double the colors in the color bucket, and more awesome pro features!

[Learn more, Memberships starting at \\$2.50/m!](#)

**Follow me
on Twitter!**

@ConvertingColor