

Converting Colors

YUV(141.0830, -12.3659,
46.4082)

Have a look what the booklet for
YUV(141.0830, -12.3659, 46.4082)
contains.

YUV(141.0830, -12.3659, 46.4082)	3
<i>Conversions</i>	4
<i>Details</i>	6
<i>Harmonies</i>	12
<i>Previews</i>	24
<i>Color Blindness Simulation</i>	28
<i>CSS Examples</i>	31

Color

**YUV(141.0830, -12.3659,
46.4082)**

Conversions

Conversions Part 1

Format	Color
Hex	C27774
RGB	194, 119, 116
RGB Percent	76%, 47%, 45%
CMY	0.2392, 0.5333, 0.5451
CMYK	0.00, 0.39, 0.40, 0.24
HSL	2°, 39%, 61%
HSV	2°, 40%, 76%
XYZ	31.9973, 25.9239, 19.8404
YIQ	141.0830, 45.6630, 14.9670

Conversions

Conversions Part 2

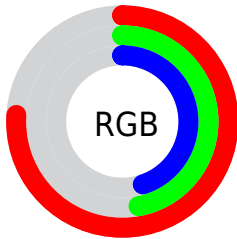
Format	Color
RYB	194, 119, 116
Decimal	12744564
CIELab	57.96, 29.01, 14.14
CIELCh	58, 32.274, 25.983
Yxy	25.9239, 0.4115, 0.3334
Android (android.graphics.Color)	4290934644 (0xFFC27774)
YUV	141.0830, -12.3659, 46.4082
Hunter-Lab	50.9156, 23.0742, 12.5372

Details

The YUV color $[141.0830, -12.3659, 46.4082]$ is a dark color, and the websafe version is hex $CC6666$. A complement of this color would be $[168.9170, 12.3659, -46.4082]$, and the grayscale version is $[141.0000, 0.0000, 0.0000]$.

A 20% lighter version of the original color is $[195.7630, -13.6872, 50.1968]$, and $[89.5170, -10.6079, 42.5196]$ is the 20% darker color. If you saturate the color by 10%, you get $[127.7640, -15.1667, 58.0890]$, and if you desaturate by 10%, it is $[154.4020, -9.5652, 34.7274]$.

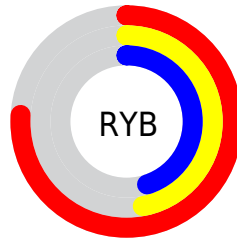
Distribution



Red (76%)

Green (47%)

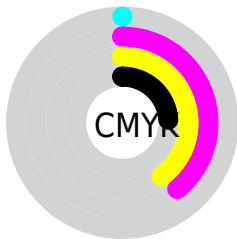
Blue (45%)



Red (76%)

Yellow (47%)

Blue (45%)

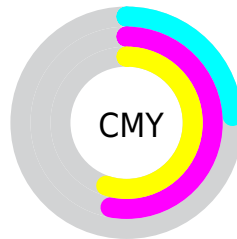


Cyan (0%)

Magenta (39%)

Yellow (40%)

Black (24%)



Cyan (24%)

Magenta (53%)

Yellow (55%)

Brightness & Saturation Gradients

These gradients show how the YUV color 141.0830, -12.3659, 46.4082 changes by changing the brightness by 10 percent. The first figure shows a shift by +10% for each color and the second figure -10%.

Similar to the brightness gradients but the following saturation gradients show a change of the YUV color 141.0830, -12.3659, 46.4082 by changing the saturation by 10% instead.

■ 141.0830,
-12.3659, 46.4082

■ 141.0830,
-12.3659, 46.4082

■ 255.0000, 0.0000,
0.0000

■ 115.1860,
-11.9237, 44.5639

■ 195.7630,
-13.6872, 50.1968

■ 89.5170, -10.6079,
42.5196

■ 215.8750,
-10.2914, 34.3126

■ 64.8480, -9.2921,
40.4753

■ 235.5030, -6.1640,
17.0989

■ 40.8800, -7.8288,
37.8162

■ 254.6580, -1.3104,
0.2999

■ 17.6410, -8.6970,
36.2718

■ 10.2800, -4.5750,
20.8024

■ 0.0000, 0.0000,

0.0000

■ 141.0830,
-12.3659, 46.4082

■ 141.0830,
-12.3659, 46.4082

■ 127.7640,
-15.1667, 58.0890

■ 154.4020, -9.5652,
34.7274

■ 114.9180,
-18.6936, 69.3549

■ 167.2480, -6.0383,
23.4615

■ 101.5990,
-21.4943, 81.0357

■ 180.5670, -3.2375,
11.7807

■ 88.1660, -24.7318,
92.8164

■ 194.0000, 0.0000,
0.0000

■ 75.4340, -27.8220,
103.9824

■ 206.7320, 3.0901,
-11.1660

■ 62.1150, -30.6227,
115.6631

■ 220.0510, 5.8909,
-22.8467

■ 233.4840, 9.1284,
-34.6275

■ 236.7610, 8.9918,
-37.5014

Harmonies

Analogous

The Analogous color harmony consists of three colors that are next to each other on the color wheel.



142.7910, 0.5960, 42.2793



141.0830, -12.3659, 46.4082



139.2810, -22.8165, 38.3416

Triad

The Triadic color harmony groups three colors that are evenly spaced from another and form a triangle on the color wheel.



141.0830, -12.3659, 46.4082



130.7350, -11.7014, -26.9546



133.6790, 30.2313, -36.5525

Complementary

The Complementary color scheme is a pair of colors which are on the opposite of each other on the color wheel.



141.0830, -12.3659, 46.4082



168.9170, 12.3659, -46.4082

Split Complementary

Split-complementary colors differ from the complementary color scheme. The scheme consists of three colors, the original color and two neighbors of the complement color.



121.6980, 31.2079, -69.8951



141.0830, -12.3659, 46.4082



124.2120, 4.8255, -54.5599

Square

The Square scheme is like the rectangle color scheme, but the four colors are evenly spaced on the color wheel.



141.0830, -12.3659, 46.4082



134.9140, -23.1286, -1.6786



115.8570, 23.2415, -81.4356



140.6940, 24.3079, -3.2396

Rectangle

The Rectangle color scheme consists of four colors that form a rectangle on the color wheel.



141.0830, -12.3659, 46.4082



138.5910, -26.4204, 27.5457



115.8570, 23.2415, -81.4356



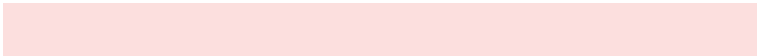
130.2430, 31.4322, -48.4481

Sweetspot

The Sweet Spot groups the original color and five complimentary colors.



141.0830, -12.3659, 46.4082



231.5570, -4.7116, 17.9285



147.8720, 21.2621, 40.4543



115.3820, -2.6533, 11.0660



0.0000, 0.0000, 0.0000



128.0000, 0.0000, 0.0000

Same Dimension

The Same Dimension uses a secret algorithm to generate beautiful new colors.



141.0830, -12.3659, 46.4082



170.1140, -19.2832, 71.8140



163.9760, -23.6522, 26.3310



90.5770, -1.7635, 5.6330



51.6610, -25.4689, 95.8903



10.4540, -5.1538, 19.7728

Inverse Universe

The Inverse Universe completely reimagines the original color for something new.



168.9170, 12.3659, -46.4082



213.4730, 18.9938, -72.3288



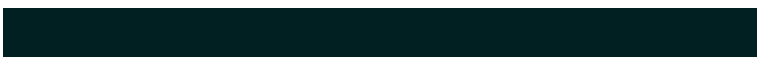
146.0240, 23.6522, -26.3310



94.0100, 1.4741, -6.1478



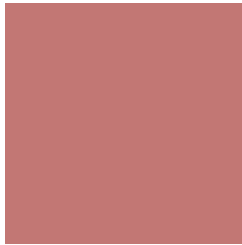
108.7520, 25.7583, -95.3755



22.5460, 5.1538, -19.7728

Previews

White Background



This preview shows how the YUV color 141.0830, -12.3659, 46.4082 looks on a white background.

Color Contrast Check

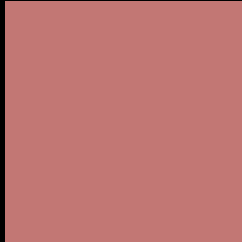
Large Text (above 18pt) WCAG AA ✓ Pass

Any Text WCAG AA × Fail

Large Text (above 18pt) WCAG AAA × Fail

Any Text WCAG AAA × Fail

Black Background



This preview shows how the YUV color 141.0830, -12.3659, 46.4082 looks on a black background.

Color Contrast Check

Large Text (above 18pt) WCAG AA ✓ Pass

Any Text WCAG AA ✓ Pass

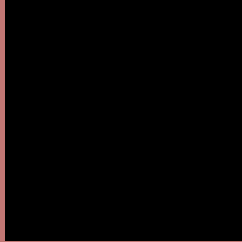
Large Text (above 18pt) WCAG AAA ✓ Pass

Any Text WCAG AAA × Fail

If you want to check with other color combinations, try the [Color Contrast Checker](#).

YUV 141.0830, -12.3659, 46.4082

Background



This preview shows how black text looks on a background with the YUV color 141.0830, -12.3659, 46.4082.



This preview shows how white text looks on a background with the YUV color 141.0830, -12.3659,

Color Blindness Simulation

Color vision deficiency is a very complex topic, and I could not describe the different causes any better than Wikipedia does, so if you want to learn more, you should check out their [article about color blindness](#).

Dichromacy



Original Color

141.0830, -12.3659, 46.4082

Protanopia

139.3120, -6.5628, 4.9884

Deuteranopia

139.9780, -13.3002, 19.3133



Tritanopia

141.3480, -7.5666, 47.0528

Trichromacy



Original Color

141.0830, -12.3659, 46.4082

Protanomaly

140.1290, -8.9376, 20.0579

Deuteranomaly

140.7450, -13.1853, 29.1646

Tritanomaly

141.4790, -9.6031, 46.9379

Monochromacy



Original Color

141.0830, -12.3659, 46.4082

Achromatopsia

141.0000, 0.0000, 0.0000

Achromatomaly

140.9590, -4.4168, 16.6990

CSS Examples

Text

The CSS property to change the color of the text to YUV 141.0830, -12.3659, 46.4082 is called "color". The color property can be set on classes, ids or directly on the HTML element.

This example shows how text in the color `rgb(194, 119, 116)` looks like.

```
.text, #text, p{  
    color:rgb(194, 119, 116)  
}
```

If you want to add a text shadow in that color use the text-shadow property, you can generate a text shadow directly with our [CSS Text Shadow Generator](#).

Here you see how black text with a 4 pixel rgb(194, 119, 116) colored shadow looks like.

```
.shadow{ text-shadow: 4px 4px 2px rgb(194, 119, 116) }
```

Border

The CSS property to change the border of an element to YUV 141.0830, -12.3659, 46.4082 is called "border".

The border property can be set on classes, ids or directly on the HTML element.

This example shows the color as border, it can be applied via the CSS property "border" or "border-color".

```
.border, #border, table{ border:4px solid rgb(194, 119, 116) }
```


If only the border color should be changed use the property `border-color`.

```
.border{ border-color:rgb(194, 119, 116) }
```

If you want to add a box shadow in that color use:

Here you see how a box with a 4 pixel `rgb(194, 119, 116)` colored shadow looks like.

```
.boxshadow{ -moz-box-shadow:4px 4px 4px 4px rgb(194, 119, 116); -webkit-box-shadow:4px 4px 4px 4px rgb(194, 119, 116); box-shadow:4px 4px 4px 4px rgb(194, 119, 116) }
```

Background

The CSS property to change the background color of an element to YUV 141.0830, -12.3659, 46.4082 is called "background". The background property can be set on classes, ids or directly on the HTML element.

```
.background, #background, body{  
background: rgb(194, 119, 116) }
```

If only the background color should be changed can be used:

```
.background{ background-color: rgb(194,  
119, 116) }
```

This example shows the color as background, it is applied via the CSS property "background".

To optimize and compress your CSS code, you can use our [online CSS compressor and optimizer](#) based on csstidy. If you want to create a linear or radial gradient as background or border, check our [CSS Gradient Generator](#).

Hey! You found this booklet interesting? Support Converting Colors with the new Membership Option!

The pro membership hides all ads, plus gives you double the colors in the color bucket, and more awesome pro features!

[Learn more, Memberships starting at \\$2.50/m!](#)

**Follow me
on Twitter!**

@ConvertingColor