

Converting Colors

YUV(141.2050, -24.2581,
34.0232)

Have a look what the booklet for
YUV(141.2050, -24.2581, 34.0232)
contains.

YUV(141.2050, -24.2581, 34.0232)	3
<i>Conversions</i>	4
<i>Details</i>	6
<i>Harmonies</i>	12
<i>Previews</i>	24
<i>Color Blindness Simulation</i>	28
<i>CSS Examples</i>	31

Color

**YUV(141.2050, -24.2581,
34.0232)**

Conversions

Conversions Part 1

Format	Color
Hex	B4835C
RGB	180, 131, 92
RGB Percent	71%, 51%, 36%
CMY	0.2941, 0.4863, 0.6392
CMYK	0.00, 0.27, 0.49, 0.29
HSL	27°, 37%, 53%
HSV	27°, 49%, 71%
XYZ	28.8705, 26.7086, 13.7589
YIQ	141.2050, 41.7230, -1.7410

Conversions

Conversions Part 2

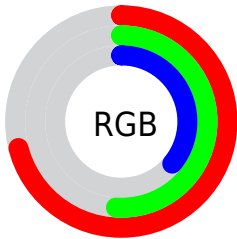
Format	Color
R_{YB}	180, 162, 92
Decimal	11830108
CIE _{Lab}	58.70, 14.11, 28.44
CIE _{LCh}	59, 31.744, 63.616
Yxy	26.7086, 0.4164, 0.3852
Android (android.graphics.Color)	4290020188 (0xFFB4835C)
YUV	141.2050, -24.2581, 34.0232
Hunter-Lab	51.6804, 9.2757, 20.3915

Details

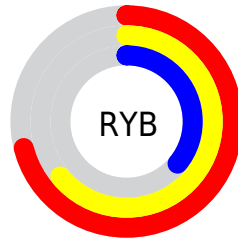
The YUV color $141.2050, -24.2581, 34.0232$ is a dark color, and the websafe version is hex $CC9966$. A complement of this color would be $130.7950, 24.2581, -34.0232$, and the grayscale version is $141.0000, 0.0000, 0.0000$.

A 20% lighter version of the original color is $195.4720, -25.8687, 37.2971$, and $90.6390, -22.5000, 30.1346$ is the 20% darker color. If you saturate the color by 10%, you get $133.2830, -29.2265, 40.9708$, and if you desaturate by 10%, it is $149.1270, -19.2896, 27.0756$.

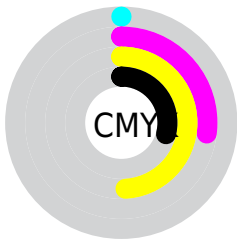
Distribution



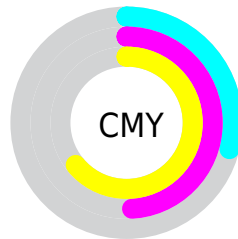
- Red (71%)
- Green (51%)
- Blue (36%)



- Red (71%)
- Yellow (64%)
- Blue (36%)



- Cyan (0%)
- Magenta (27%)
- Yellow (49%)
- Black (29%)



- Cyan (29%)
- Magenta (49%)
- Yellow (64%)

Brightness & Saturation Gradients

These gradients show how the YUV color 141.2050, -24.2581, 34.0232 changes by changing the brightness by 10 percent. The first figure shows a shift by +10% for each color and the second figure -10%.

Similar to the brightness gradients but the following saturation gradients show a change of the YUV color 141.2050, -24.2581, 34.0232 by changing the saturation by 10% instead.

■ 141.2050,
-24.2581, 34.0232

■ 141.2050,
-24.2581, 34.0232

■ 255.0000, 0.0000,
0.0000

■ 115.4220,
-23.3790, 32.0789

■ 195.4720,
-25.8687, 37.2971

■ 90.6390, -22.5000,
30.1346

■ 219.9550,
-25.1208, 30.7345

■ 65.9700, -21.1842,
28.0903

■ 239.5830,
-20.9934, 13.5207

■ 42.6600, -21.0314,
25.7312

■ 251.5800,
-13.1039, 2.9993

■ 23.4450, -11.5584,
20.6577

■ 254.8860, -0.4368,
0.1000

■ 5.6810, -2.8007,
11.6808

■ 0.0000, 0.0000,

0.0000

■ 141.2050,
-24.2581, 34.0232

■ 141.2050,
-24.2581, 34.0232

■ 133.2830,
-29.2265, 40.9708

■ 149.1270,
-19.2896, 27.0756

■ 125.3610,
-34.1950, 47.9184

■ 157.0490,
-14.3212, 20.1280

■ 117.4390,
-39.1634, 54.8660

■ 164.9710, -9.3527,
13.1804

■ 109.5170,
-44.1319, 61.8136

■ 172.8930, -4.3842,
6.2328

■ 101.5950,
-49.1003, 68.7612

■ 180.8150, 0.5842,
-0.7148

■ 100.7800,
-49.6845, 69.4759

■ 188.7370, 5.5527,
-7.6623

■ 196.6590, 10.5211,
-14.6099

■ 204.5810, 15.4896,
-21.5575

■ 212.5030, 20.4580,
-28.5051

Harmonies

Analogous

The Analogous color harmony consists of three colors that are next to each other on the color wheel.



142.9750, -15.2707, 44.7489



141.2050, -24.2581, 34.0232



139.1010, -26.6718, 14.8204

Triad

The Triadic color harmony groups three colors that are evenly spaced from another and form a triangle on the color wheel.



141.2050, -24.2581, 34.0232



125.0310, 9.3517, -59.6632



144.0540, 21.6654, 4.3376

Complementary

The Complementary color scheme is a pair of colors which are on the opposite of each other on the color wheel.



141.2050, -24.2581, 34.0232



130.7950, 24.2581, -34.0232

Split Complementary

Split-complementary colors differ from the complementary color scheme. The scheme consists of three colors, the original color and two neighbors of the complement color.



138.2780, 28.4569, -27.4308



141.2050, -24.2581, 34.0232



119.4490, 25.4146, -78.4468

Square

The Square scheme is like the rectangle color scheme, but the four colors are evenly spaced on the color wheel.



141.2050, -24.2581, 34.0232



131.4290, -7.6065, -33.7022



128.2370, 30.4492, -59.8438



145.2330, 10.2381, 29.6137

Rectangle

The Rectangle color scheme consists of four colors that form a rectangle on the color wheel.



141.2050, -24.2581, 34.0232



136.8110, -23.5708, 0.1658



128.2370, 30.4492, -59.8438



142.3840, 24.4607, -5.5988

Sweetspot

The Sweet Spot groups the original color and five complimentary colors.



141.2050, -24.2581, 34.0232



219.1560, -9.9369, 13.8952



124.0120, 8.8681, 49.1015



108.1490, -5.9895, 7.7623



245.0000, 0.0000, 0.0000



117.0000, 0.0000, 0.0000

Same Dimension

The Same Dimension uses a secret algorithm to generate beautiful new colors.



141.2050, -24.2581, 34.0232



173.9550, -38.4318, 53.5365



166.4460, -36.7019, 11.8869



85.0390, -2.4842, 3.4738



85.6630, -42.2319, 59.0545



14.2310, -7.0159, 10.3214

Inverse Universe

The Inverse Universe completely reimagines the original color for something new.



130.7950, 24.2581, -34.0232



157.0450, 38.4318, -53.5365



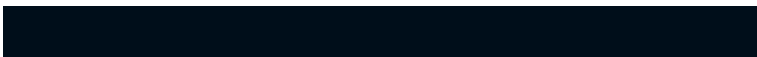
105.5540, 36.7019, -11.8869



83.9610, 2.4842, -3.4738



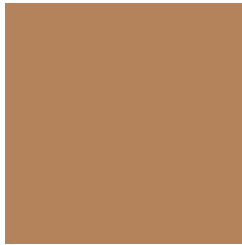
67.3370, 42.2319, -59.0545



11.1820, 7.3053, -9.8066

Previews

White Background



This preview shows how the YUV color 141.2050, -24.2581, 34.0232 looks on a white background.

Color Contrast Check

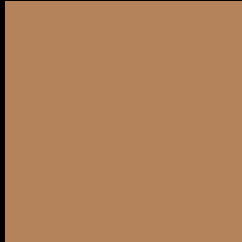
Large Text (above 18pt) WCAG AA ✓ Pass

Any Text WCAG AA × Fail

Large Text (above 18pt) WCAG AAA × Fail

Any Text WCAG AAA × Fail

Black Background



This preview shows how the YUV color 141.2050, -24.2581, 34.0232 looks on a black background.

Color Contrast Check

Large Text (above 18pt) WCAG AA ✓ Pass

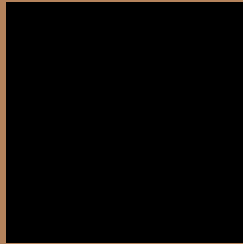
Any Text WCAG AA ✓ Pass

Large Text (above 18pt) WCAG AAA ✓ Pass

Any Text WCAG AAA × Fail

If you want to check with other color combinations, try the [Color Contrast Checker](#).

YUV 141.2050, -24.2581, 34.0232 Background



This preview shows how black text looks on a background with the YUV color 141.2050, -24.2581, 34.0232.



This preview shows how white text looks on a background with the YUV color 141.2050, -24.2581,

Color Blindness Simulation

Color vision deficiency is a very complex topic, and I could not describe the different causes any better than Wikipedia does, so if you want to learn more, you should check out their [article about color blindness](#).

Dichromacy



Original Color

141.2050, -24.2581, 34.0232

Protanopia

139.4580, -21.4248, 11.8763

Deuteranopia

140.4490, -24.3784, 25.9162



Tritanopia

143.7810, -4.3290, 35.2721

Trichromacy



Original Color

141.2050, -24.2581, 34.0232

Protanomaly

139.9860, -22.1781, 20.1833

Deuteranomaly

141.0580, -24.6786, 28.8901

Tritanomaly

142.8320, -11.7492, 35.2273

Monochromacy



Original Color

141.2050, -24.2581, 34.0232

Achromatopsia

141.0000, 0.0000, 0.0000

Achromatomaly

140.7860, -8.7685, 12.4657

CSS Examples

Text

The CSS property to change the color of the text to YUV 141.2050, -24.2581, 34.0232 is called "color". The color property can be set on classes, ids or directly on the HTML element.

This example shows how text in the color `rgb(180, 131, 92)` looks like.

```
.text, #text, p{  
    color:rgb(180, 131, 92)  
}
```

If you want to add a text shadow in that color use the text-shadow property, you can generate a text shadow directly with our [CSS Text Shadow Generator](#).

Here you see how black text with a 4 pixel rgb(180, 131, 92) colored shadow looks like.

```
.shadow{ text-shadow: 4px 4px 2px rgb(180, 131, 92) }
```

Border

The CSS property to change the border of an element to YUV 141.2050, -24.2581, 34.0232 is called "border".

The border property can be set on classes, ids or directly on the HTML element.

This example shows the color as border, it can be applied via the CSS property "border" or "border-color".

```
.border, #border, table{ border:4px solid rgb(180, 131, 92) }
```


If only the border color should be changed use the property border-color.

```
.border{ border-color:rgb(180, 131, 92) }
```

If you want to add a box shadow in that color use:

Here you see how a box with a 4 pixel rgb(180, 131, 92) colored shadow looks like.

```
.boxshadow{ -moz-box-shadow:4px 4px 4px  
4px rgb(180, 131, 92); -webkit-box-  
shadow:4px 4px 4px 4px rgb(180, 131, 92);  
box-shadow:4px 4px 4px 4px rgb(180, 131,  
92) }
```

Background

The CSS property to change the background color of an element to YUV 141.2050, -24.2581, 34.0232 is called "background". The background property can be set on classes, ids or directly on the HTML element.

```
.background, #background, body{  
background: rgb(180, 131, 92) }
```

If only the background color should be changed can be used:

```
.background{ background-color: rgb(180,  
131, 92) }
```

This example shows the color as background, it is applied via the CSS property "background".

To optimize and compress your CSS code, you can use our [online CSS compressor and optimizer](#) based on csstidy. If you want to create a linear or radial gradient as background or border, check our [CSS Gradient Generator](#).

Hey! You found this booklet interesting? Support Converting Colors with the new Membership Option!

The pro membership hides all ads, plus gives you double the colors in the color bucket, and more awesome pro features!

[Learn more, Memberships starting at \\$2.50/m!](#)

**Follow me
on Twitter!**

@ConvertingColor