

Converting Colors

YUV(141.3560, -16.4445,
47.9228)

Have a look what the booklet for
YUV(141.3560, -16.4445, 47.9228)
contains.

YUV(141.3560, -16.4445, 47.9228)	3
<i>Conversions</i>	4
<i>Details</i>	6
<i>Harmonies</i>	12
<i>Previews</i>	24
<i>Color Blindness Simulation</i>	28
<i>CSS Examples</i>	31

Color

**YUV(141.3560, -16.4445,
47.9228)**

Conversions

Conversions Part 1

Format	Color
Hex	C4786C
RGB	196, 120, 108
RGB Percent	77%, 47%, 42%
CMY	0.2314, 0.5294, 0.5765
CMYK	0.00, 0.39, 0.45, 0.23
HSL	8°, 43%, 60%
HSV	8°, 45%, 77%
XYZ	32.1882, 26.2514, 17.5579
YIQ	141.3560, 49.1480, 12.3800

Conversions

Conversions Part 2

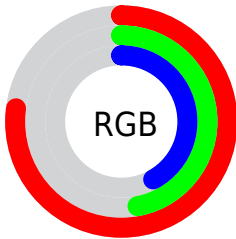
Format	Color
R _Y B	196, 122, 108
Decimal	12875884
CIE Lab	58.27, 28.37, 19.20
CIE LCh	58, 34.253, 34.094
Yxy	26.2514, 0.4235, 0.3454
Android (android.graphics.Color)	4291065964 (0xFFC4786C)
YUV	141.3560, -16.4445, 47.9228
Hunter-Lab	51.2361, 22.4762, 15.5475

Details

The YUV color **141.3560, -16.4445, 47.9228** is a dark color, and the websafe version is hex **CC6666**. A complement of this color would be **162.6440, 16.4445, -47.9228**, and the grayscale version is **141.0000, 0.0000, 0.0000**.

A 20% lighter version of the original color is **195.9220, -18.2025, 51.8114**, and **89.6050, -14.1023, 43.3194** is the 20% darker color. If you saturate the color by 10%, you get **129.0970, -20.2608, 58.6739**, and if you desaturate by 10%, it is **153.6150, -12.6282, 37.1716**.

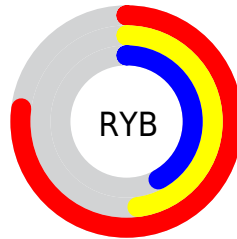
Distribution



Red (77%)

Green (47%)

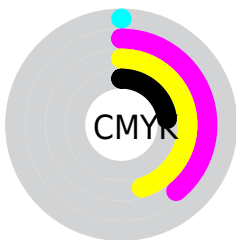
Blue (42%)



Red (77%)

Yellow (48%)

Blue (42%)

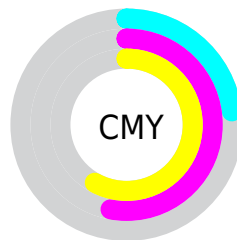


Cyan (0%)

Magenta (39%)

Yellow (45%)

Black (23%)



Cyan (23%)

Magenta (53%)

Yellow (58%)

Brightness & Saturation Gradients

These gradients show how the YUV color 141.3560, -16.4445, 47.9228 changes by changing the brightness by 10 percent. The first figure shows a shift by +10% for each color and the second figure -10%.

Similar to the brightness gradients but the following saturation gradients show a change of the YUV color 141.3560, -16.4445, 47.9228 by changing the saturation by 10% instead.

■ 141.3560,
-16.4445, 47.9228

■ 141.3560,
-16.4445, 47.9228

■ 255.0000, 0.0000,
0.0000

■ 115.2740,
-15.4181, 45.3637

■ 195.9220,
-18.2025, 51.8114

■ 89.6050, -14.1023,
43.3194

■ 215.4360,
-14.5119, 34.6976

■ 64.9360, -12.7864,
41.2751

■ 235.0640,
-10.3846, 17.4839

■ 40.9680, -11.3232,
38.6161

■ 253.6320, -5.2416,
1.1997

■ 17.6410, -8.6970,
36.2718

■ 10.5790, -4.7224,
21.4172

■ 0.0000, 0.0000,

0.0000

■ 141.3560,
-16.4445, 47.9228

■ 141.3560,
-16.4445, 47.9228

■ 129.0970,
-20.2608, 58.6739

■ 153.6150,
-12.6282, 37.1716

■ 116.9520,
-23.6403, 69.3251

■ 165.7600, -9.2487,
26.5205

■ 104.6930,
-27.4566, 80.0762

■ 178.0190, -5.4324,
15.7693

■ 92.5480, -30.8362,
90.7274

■ 190.1640, -2.0529,
5.1182

■ 80.2890, -34.6525,
101.4785

■ 202.4230, 1.7635,
-5.6330

■ 74.4530, -36.7053,
106.5967

■ 214.6820, 5.5798,
-16.3841

■ 226.2400, 9.2487,
-26.5205

■ 237.3590, 8.6970,
-36.2718

Harmonies

Analogous

The Analogous color harmony consists of three colors that are next to each other on the color wheel.



142.6130, -2.7672, 47.6974



141.3560, -16.4445, 47.9228



139.7600, -26.0107, 36.1675

Triad

The Triadic color harmony groups three colors that are evenly spaced from another and form a triangle on the color wheel.



141.3560, -16.4445, 47.9228



129.2930, -8.0324, -37.0910



136.6520, 31.2306, -30.3898

Complementary

The Complementary color scheme is a pair of colors which are on the opposite of each other on the color wheel.



141.3560, -16.4445, 47.9228



162.6440, 16.4445, -47.9228

Split Complementary

Split-complementary colors differ from the complementary color scheme. The scheme consists of three colors, the original color and two neighbors of the complement color.



123.2080, 34.4075, -69.4654



141.3560, -16.4445, 47.9228



120.1330, 11.2734, -69.3996

Square

The Square scheme is like the rectangle color scheme, but the four colors are evenly spaced on the color wheel.



141.3560, -16.4445, 47.9228



134.0980, -22.2333, -8.8559



110.7070, 30.7104, -97.0900



143.1080, 23.1178, 5.1673

Rectangle

The Rectangle color scheme consists of four colors that form a rectangle on the color wheel.



141.3560, -16.4445, 47.9228



138.2870, -28.7355, 23.4273



110.7070, 30.7104, -97.0900



132.9170, 32.5789, -42.9002

Sweetspot

The Sweet Spot groups the original color and five complimentary colors.



141.3560, -16.4445, 47.9228



234.2150, -6.0220, 18.2284



142.9760, 20.2248, 46.5020



115.0400, -3.9637, 11.3659



0.0000, 0.0000, 0.0000



128.0000, 0.0000, 0.0000

Same Dimension

The Same Dimension uses a secret algorithm to generate beautiful new colors.



141.3560, -16.4445, 47.9228



169.4150, -25.8406, 75.0580



167.1840, -29.1777, 25.2716



91.1640, -2.0529, 5.1182



61.0530, -30.0991, 87.6535



12.8020, -6.3114, 17.7136

Inverse Universe

The Inverse Universe completely reimagines the original color for something new.



162.6440, 16.4445, -47.9228



202.5850, 25.8406, -75.0580



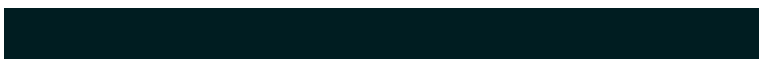
136.8160, 29.1777, -25.2716



93.4230, 1.7635, -5.6330



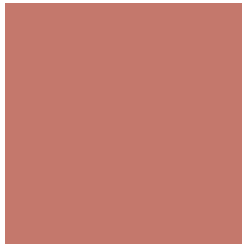
99.9470, 30.0991, -87.6535



20.7850, 6.0220, -18.2284

Previews

White Background



This preview shows how the YUV color 141.3560, -16.4445, 47.9228 looks on a white background.

Color Contrast Check

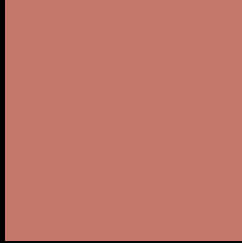
Large Text (above 18pt) WCAG AA ✓ Pass

Any Text WCAG AA × Fail

Large Text (above 18pt) WCAG AAA × Fail

Any Text WCAG AAA × Fail

Black Background



This preview shows how the YUV color 141.3560, -16.4445, 47.9228 looks on a black background.

Color Contrast Check

Large Text (above 18pt) WCAG AA ✓ Pass

Any Text WCAG AA ✓ Pass

Large Text (above 18pt) WCAG AAA ✓ Pass

Any Text WCAG AAA × Fail

If you want to check with other color combinations, try the [Color Contrast Checker](#).

YUV 141.3560, -16.4445, 47.9228

Background



This preview shows how black text looks on a background with the YUV color 141.3560, -16.4445, 47.9228.



This preview shows how white text looks on a background with the YUV color 141.3560, -16.4445,

47.9228.

Color Blindness Simulation

Color vision deficiency is a very complex topic, and I could not describe the different causes any better than Wikipedia does, so if you want to learn more, you should check out their [article about color blindness](#).

Dichromacy



Original Color

141.3560, -16.4445, 47.9228

Protanopia

139.7700, -11.2256, 7.2177

Deuteranopia

140.8490, -17.6736, 22.0574



Tritanopia

141.9460, -7.8614, 48.2824

Trichromacy



Original Color

141.3560, -16.4445, 47.9228

Protanomaly

140.4020, -13.0162, 21.5724

Deuteranomaly

141.3170, -17.4113, 31.2940

Tritanomaly

141.7350, -11.2084, 48.4674

Monochromacy



Original Color

141.3560, -16.4445, 47.9228

Achromatopsia

141.0000, 0.0000, 0.0000

Achromatomaly

140.9160, -5.8746, 17.6137

CSS Examples

Text

The CSS property to change the color of the text to YUV 141.3560, -16.4445, 47.9228 is called "color". The color property can be set on classes, ids or directly on the HTML element.

This example shows how text in the color `rgb(196, 120, 108)` looks like.

```
.text, #text, p{  
    color:rgb(196, 120, 108)  
}
```

If you want to add a text shadow in that color use the text-shadow property, you can generate a text shadow directly with our [CSS Text Shadow Generator](#).

Here you see how black text with a 4 pixel rgb(196, 120, 108) colored shadow looks like.

```
.shadow{ text-shadow: 4px 4px 2px rgb(196, 120, 108) }
```

Border

The CSS property to change the border of an element to YUV 141.3560, -16.4445, 47.9228 is called "border".

The border property can be set on classes, ids or directly on the HTML element.

This example shows the color as border, it can be applied via the CSS property "border" or "border-color".

```
.border, #border, table{ border:4px solid rgb(196, 120, 108) }
```


If only the border color should be changed use the property `border-color`.

```
.border{ border-color:rgb(196, 120, 108) }
```

If you want to add a box shadow in that color use:

Here you see how a box with a 4 pixel `rgb(196, 120, 108)` colored shadow looks like.

```
.boxshadow{ -moz-box-shadow:4px 4px 4px  
4px rgb(196, 120, 108); -webkit-box-  
shadow:4px 4px 4px 4px rgb(196, 120, 108);  
box-shadow:4px 4px 4px 4px rgb(196, 120,  
108) }
```

Background

The CSS property to change the background color of an element to YUV 141.3560, -16.4445, 47.9228 is called "background". The background property can be set on classes, ids or directly on the HTML element.

```
.background, #background, body{  
background: rgb(196, 120, 108) }
```

If only the background color should be changed can be used:

```
.background{ background-color: rgb(196,  
120, 108) }
```

This example shows the color as background, it is applied via the CSS property "background".

To optimize and compress your CSS code, you can use our [online CSS compressor and optimizer](#) based on csstidy. If you want to create a linear or radial gradient as background or border, check our [CSS Gradient Generator](#).

Hey! You found this booklet interesting? Support Converting Colors with the new Membership Option!

The pro membership hides all ads, plus gives you double the colors in the color bucket, and more awesome pro features!

[Learn more, Memberships starting at \\$2.50/m!](#)

**Follow me
on Twitter!**

@ConvertingColor