

Converting Colors

YUV(141.4530, -16.9853,
34.6827)

Have a look what the booklet for
YUV(141.4530, -16.9853, 34.6827)
contains.

YUV(141.4530, -16.9853, 34.6827)	3
<i>Conversions</i>	4
<i>Details</i>	6
<i>Harmonies</i>	12
<i>Previews</i>	24
<i>Color Blindness Simulation</i>	28
<i>CSS Examples</i>	31

Color

**YUV(141.4530, -16.9853,
34.6827)**

Conversions

Conversions Part 1

Format	Color
Hex	B5806B
RGB	181, 128, 107
RGB Percent	71%, 50%, 42%
CMY	0.2902, 0.4980, 0.5804
CMYK	0.00, 0.29, 0.41, 0.29
HSL	17°, 33%, 56%
HSV	17°, 41%, 71%
XYZ	29.4291, 26.3236, 17.4398
YIQ	141.4530, 38.3290, 4.7050

Conversions

Conversions Part 2

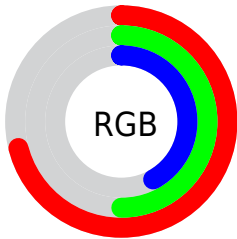
Format	Color
R_{YB}	181, 136, 107
Decimal	11894891
CIE Lab	58.34, 17.82, 19.56
CIE LCh	58, 26.459, 47.676
Yxy	26.3236, 0.4021, 0.3596
Android (android.graphics.Color)	4290084971 (0xFFB5806B)
YUV	141.4530, -16.9853, 34.6827
Hunter-Lab	51.3066, 12.5998, 15.7611

Details

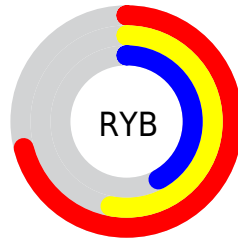
The YUV color **141.4530, -16.9853, 34.6827** is a dark color, and the websafe version is hex **996666**. A complement of this color would be **146.5470, 16.9853, -34.6827**, and the grayscale version is **142.0000, 0.0000, 0.0000**.

A 20% lighter version of the original color is **195.4210, -18.4486, 37.3418**, and **90.7730, -15.6641, 30.8941** is the 20% darker color. If you saturate the color by 10%, you get **131.7700, -21.0856, 43.1747**, and if you desaturate by 10%, it is **151.1360, -12.8850, 26.1907**.

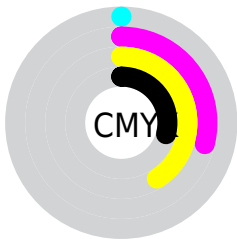
Distribution



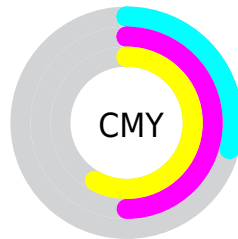
- Red (71%)
- Green (50%)
- Blue (42%)



- Red (71%)
- Yellow (53%)
- Blue (42%)



- Cyan (0%)
- Magenta (29%)
- Yellow (41%)
- Black (29%)



- Cyan (29%)
- Magenta (50%)
- Yellow (58%)

Brightness & Saturation Gradients

These gradients show how the YUV color 141.4530, -16.9853, 34.6827 changes by changing the brightness by 10 percent. The first figure shows a shift by +10% for each color and the second figure -10%.

Similar to the brightness gradients but the following saturation gradients show a change of the YUV color 141.4530, -16.9853, 34.6827 by changing the saturation by 10% instead.

■ 141.4530,
-16.9853, 34.6827

■ 141.4530,
-16.9853, 34.6827

■ 255.0000, 0.0000,
0.0000

■ 115.6700,
-16.1063, 32.7384

■ 195.4210,
-18.4486, 37.3418

■ 90.7730, -15.6641,
30.8941

■ 220.0180,
-17.2639, 30.6792

■ 66.5170, -14.0589,
29.3646

■ 239.6460,
-13.1365, 13.4655

■ 43.4350, -13.0325,
26.8055

■ 253.5180, -5.6784,
1.2997

■ 21.9940, -10.8430,
24.5613

■ 6.8770, -3.3904,
14.1399

■ 0.0000, 0.0000,

0.0000

■ 141.4530,
-16.9853, 34.6827

■ 141.4530,
-16.9853, 34.6827

■ 131.7700,
-21.0856, 43.1747

■ 151.1360,
-12.8850, 26.1907

■ 122.0870,
-25.1859, 51.6667

■ 160.8190, -8.7848,
17.6987

■ 112.4040,
-29.2862, 60.1587

■ 170.5020, -4.6845,
9.2067

■ 102.7210,
-33.3865, 68.6507

■ 180.1850, -0.5842,
0.7148

■ 93.0380, -37.4867,
77.1427

■ 189.9820, 3.9529,
-7.8772

■ 84.0560, -41.4396,
85.0199

■ 199.6650, 8.0532,
-16.3692

■ 209.3480, 12.1534,
-24.8612

■ 219.0310, 16.2537,
-33.3532

■ 227.0040, 13.8020,
-40.3455

Harmonies

Analogous

The Analogous color harmony consists of three colors that are next to each other on the color wheel.



142.5920, -7.6869, 38.9458



141.4530, -16.9853, 34.6827



139.9970, -22.1835, 21.9276

Triad

The Triadic color harmony groups three colors that are evenly spaced from another and form a triangle on the color wheel.



141.4530, -16.9853, 34.6827



130.6550, -0.3229, -36.5314



140.8520, 21.2720, -9.5172

Complementary

The Complementary color scheme is a pair of colors which are on the opposite of each other on the color wheel.



141.4530, -16.9853, 34.6827



146.5470, 16.9853, -34.6827

Split Complementary

Split-complementary colors differ from the complementary color scheme. The scheme consists of three colors, the original color and two neighbors of the complement color.



134.9090, 24.6949, -34.1232



141.4530, -16.9853, 34.6827



127.5850, 12.5296, -52.2560

Square

The Square scheme is like the rectangle color scheme, but the four colors are evenly spaced on the color wheel.



141.4530, -16.9853, 34.6827



134.4590, -13.0443, -16.1885



129.1040, 22.1337, -52.7112



143.7580, 13.9233, 14.2442

Rectangle

The Rectangle color scheme consists of four colors that form a rectangle on the color wheel.



141.4530, -16.9853, 34.6827



138.6320, -22.0036, 10.8467



129.1040, 22.1337, -52.7112



138.9650, 23.1883, -17.5093

Sweetspot

The Sweet Spot groups the original color and five complimentary colors.



141.4530, -16.9853, 34.6827



219.3670, -6.5899, 13.7101



135.1680, 12.2422, 40.1947



108.7190, -3.8055, 7.2624



245.0000, 0.0000, 0.0000



117.0000, 0.0000, 0.0000

Same Dimension

The Same Dimension uses a secret algorithm to generate beautiful new colors.



141.4530, -16.9853, 34.6827



173.1690, -26.2123, 54.2258



163.1720, -27.6928, 15.6352



84.4520, -2.1948, 3.9886



70.9880, -34.9971, 71.9245



11.8830, -5.8583, 12.3806

Inverse Universe

The Inverse Universe completely reimagines the original color for something new.



146.5470, 16.9853, -34.6827



181.2440, 26.5017, -53.7110



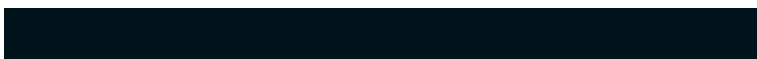
124.8280, 27.6928, -15.6352



85.1350, 1.9054, -4.5034



82.0120, 34.9971, -71.9245



13.5300, 6.1477, -11.8658

Previews

White Background



This preview shows how the YUV color 141.4530, -16.9853, 34.6827 looks on a white background.

Color Contrast Check

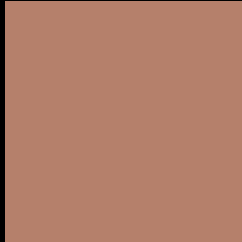
Large Text (above 18pt) WCAG AA ✓ Pass

Any Text WCAG AA × Fail

Large Text (above 18pt) WCAG AAA × Fail

Any Text WCAG AAA × Fail

Black Background



This preview shows how the YUV color 141.4530, -16.9853, 34.6827 looks on a black background.

Color Contrast Check

Large Text (above 18pt) WCAG AA ✓ Pass

Any Text WCAG AA ✓ Pass

Large Text (above 18pt) WCAG AAA ✓ Pass

Any Text WCAG AAA × Fail

If you want to check with other color combinations, try the [Color Contrast Checker](#).

YUV 141.4530, -16.9853, 34.6827

Background



This preview shows how black text looks on a background with the YUV color 141.4530, -16.9853, 34.6827.



This preview shows how white text looks on a background with the YUV color 141.4530, -16.9853, 34.6827.

34.6827.

Color Blindness Simulation

Color vision deficiency is a very complex topic, and I could not describe the different causes any better than Wikipedia does, so if you want to learn more, you should check out their [article about color blindness](#).

Dichromacy



Original Color

141.4530, -16.9853, 34.6827

Protanopia

139.6130, -13.1202, 8.2324

Deuteranopia

140.9630, -17.2368, 21.9574



Tritanopia

142.7810, -4.3290, 35.2721

Trichromacy



Original Color

141.4530, -16.9853, 34.6827

Protanomaly

140.6250, -14.6051, 17.8689

Deuteranomaly

140.6970, -17.1056, 26.5757

Tritanomaly

141.9290, -8.8390, 35.1423

Monochromacy



Original Color

141.4530, -16.9853, 34.6827

Achromatopsia

141.0000, 0.0000, 0.0000

Achromatomaly

141.1820, -6.0057, 12.9954

CSS Examples

Text

The CSS property to change the color of the text to YUV 141.4530, -16.9853, 34.6827 is called "color". The color property can be set on classes, ids or directly on the HTML element.

This example shows how text in the color `rgb(181, 128, 107)` looks like.

```
.text, #text, p{  
    color:rgb(181, 128, 107)  
}
```

If you want to add a text shadow in that color use the text-shadow property, you can generate a text shadow directly with our [CSS Text Shadow Generator](#).

Here you see how black text with a 4 pixel rgb(181, 128, 107) colored shadow looks like.

```
.shadow{ text-shadow: 4px 4px 2px rgb(181, 128, 107) }
```

Border

The CSS property to change the border of an element to YUV 141.4530, -16.9853, 34.6827 is called "border".

The border property can be set on classes, ids or directly on the HTML element.

This example shows the color as border, it can be applied via the CSS property "border" or "border-color".

```
.border, #border, table{ border:4px solid rgb(181, 128, 107) }
```


If only the border color should be changed use the property `border-color`.

```
.border{ border-color:rgb(181, 128, 107) }
```

If you want to add a box shadow in that color use:

Here you see how a box with a 4 pixel `rgb(181, 128, 107)` colored shadow looks like.

```
.boxshadow{ -moz-box-shadow:4px 4px 4px  
4px rgb(181, 128, 107); -webkit-box-  
shadow:4px 4px 4px 4px rgb(181, 128, 107);  
box-shadow:4px 4px 4px 4px rgb(181, 128,  
107) }
```

Background

The CSS property to change the background color of an element to YUV 141.4530, -16.9853, 34.6827 is called "background". The background property can be set on classes, ids or directly on the HTML element.

```
.background, #background, body{  
background: rgb(181, 128, 107) }
```

If only the background color should be changed can be used:

```
.background{ background-color: rgb(181,  
128, 107) }
```

This example shows the color as background, it is applied via the CSS property "background".

To optimize and compress your CSS code, you can use our [online CSS compressor and optimizer](#) based on csstidy. If you want to create a linear or radial gradient as background or border, check our [CSS Gradient Generator](#).

Hey! You found this booklet interesting? Support Converting Colors with the new Membership Option!

The pro membership hides all ads, plus gives you double the colors in the color bucket, and more awesome pro features!

[Learn more, Memberships starting at \\$2.50/m!](#)

**Follow me
on Twitter!**

@ConvertingColor