

# Converting Colors

YUV(141.5210, -26.8789,  
34.6231)

Have a look what the booklet for  
YUV(141.5210, -26.8789, 34.6231)  
contains.

<b>YUV(141.5210, -26.8789, 34.6231)</b> .....	3
<b><i>Conversions</i></b> .....	4
<b><i>Details</i></b> .....	6
<b><i>Harmonies</i></b> .....	12
<b><i>Previews</i></b> .....	24
<b><i>Color Blindness Simulation</i></b> .....	28
<b><i>CSS Examples</i></b> .....	31

# Color

**YUV(141.5210, -26.8789,  
34.6231)**

# Conversions

## Conversions Part 1

<b>Format</b>	<b>Color</b>
Hex	B58457
RGB	181, 132, 87
RGB Percent	71%, 52%, 34%
CMY	0.2902, 0.4824, 0.6588
CMYK	0.00, 0.27, 0.52, 0.29
HSL	29°, 39%, 53%
HSV	29°, 52%, 71%
XYZ	29.0276, 27.0144, 12.7012
YIQ	141.5210, 43.6490, -3.6070

# Conversions

## Conversions Part 2

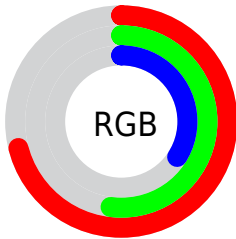
<b>Format</b>	<b>Color</b>
<b>R<sub>YB</sub></b>	181, 173, 87
Decimal	11895895
CIE <sub>Lab</sub>	58.99, 13.49, 31.57
CIE <sub>LCh</sub>	59, 34.329, 66.859
Yxy	27.0144, 0.4223, 0.3930
Android (android.graphics.Color)	4290085975 (0xFFB58457)
YUV	141.5210, -26.8789, 34.6231
Hunter-Lab	51.9754, 8.7332, 21.8941

# Details

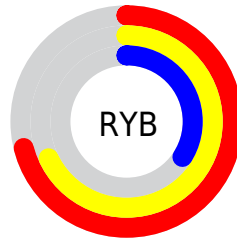
The YUV color  $141.5210, -26.8789, 34.6231$  is a dark color, and the websafe version is hex  $CC9966$ . A complement of this color would be  $126.4790, 26.8789, -34.6231$ , and the grayscale version is  $142.0000, 0.0000, 0.0000$ .

A 20% lighter version of the original color is  $195.7880, -28.4895, 37.8969$ , and  $90.0690, -24.6840, 30.6345$  is the 20% darker color. If you saturate the color by 10%, you get  $134.1860, -32.1367, 41.0559$ , and if you desaturate by 10%, it is  $148.8560, -21.6210, 28.1903$ .

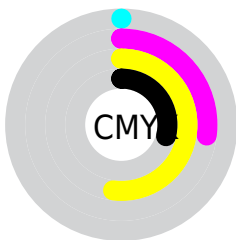
# Distribution



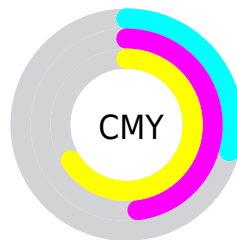
- Red (71%)
- Green (52%)
- Blue (34%)



- Red (71%)
- Yellow (68%)
- Blue (34%)



- Cyan (0%)
- Magenta (27%)
- Yellow (52%)
- Black (29%)



- Cyan (29%)
- Magenta (48%)
- Yellow (66%)

# Brightness & Saturation Gradients

These gradients show how the YUV color 141.5210, -26.8789, 34.6231 changes by changing the brightness by 10 percent. The first figure shows a shift by +10% for each color and the second figure -10%.

Similar to the brightness gradients but the following saturation gradients show a change of the YUV color 141.5210, -26.8789, 34.6231 by changing the saturation by 10% instead.



■ 141.5210,  
-26.8789, 34.6231

■ 141.5210,  
-26.8789, 34.6231

■ 255.0000, 0.0000,  
0.0000

■ 115.7380,  
-25.9998, 32.6788

■ 195.7880,  
-28.4895, 37.8969

■ 90.0690, -24.6840,  
30.6345

■ 219.9720,  
-27.5942, 30.7196

■ 66.2860, -23.8050,  
28.6902

■ 239.4860,  
-23.9036, 13.6058

■ 43.5460, -21.4682,  
25.8312

■ 250.8960,  
-15.7247, 3.5992

■ 24.0320, -11.8478,  
20.1429

■ 254.2020, -3.0576,  
0.6998

■ 5.9800, -2.9481,  
12.2955

■ 0.0000, 0.0000,

0.0000

■ 141.5210,  
-26.8789, 34.6231

■ 141.5210,  
-26.8789, 34.6231

■ 134.1860,  
-32.1367, 41.0559

■ 148.8560,  
-21.6210, 28.1903

■ 126.2640,  
-37.1052, 48.0035

■ 156.7780,  
-16.6526, 21.2427

■ 118.9290,  
-42.3630, 54.4363

■ 164.1130,  
-11.3947, 14.8099

■ 111.0070,  
-47.3315, 61.3839

■ 172.0350, -6.4263,  
7.8623

■ 105.1880,  
-51.8577, 66.4871

■ 179.4840, -0.7316,  
1.3295

■ 187.4060, 4.2368,  
-5.6181

■ 194.7410, 9.4947,  
-12.0509

■ 202.0760, 14.7525,  
-18.4837

■ 209.9980, 19.7210,  
-25.4312

# Harmonies

## Analogous

The Analogous color harmony consists of three colors that are next to each other on the color wheel.



142.7150, -17.6075, 47.6079



141.5210, -26.8789, 34.6231



138.9330, -28.5610, 14.0908

# Triad

The Triadic color harmony groups three colors that are evenly spaced from another and form a triangle on the color wheel.



141.5210, -26.8789, 34.6231



120.9800, 13.3209, -72.7735



145.1900, 22.0913, 7.7264

# Complementary

The Complementary color scheme is a pair of colors which are on the opposite of each other on the color wheel.



141.5210, -26.8789, 34.6231



126.4790, 26.8789, -34.6231

# Split Complementary

Split-complementary colors differ from the complementary color scheme. The scheme consists of three colors, the original color and two neighbors of the complement color.



139.4460, 30.3461, -26.7011



141.5210, -26.8789, 34.6231



112.3370, 31.8789, -98.5195

# Square

The Square scheme is like the rectangle color scheme, but the four colors are evenly spaced on the color wheel.



141.5210, -26.8789, 34.6231



130.3250, -6.5692, -39.7500



126.6430, 34.6860, -65.4619



145.8530, 9.9325, 34.3319



# Rectangle

The Rectangle color scheme consists of four colors that form a rectangle on the color wheel.



141.5210, -26.8789, 34.6231



136.8600, -24.5810, -2.5082



126.6430, 34.6860, -65.4619



143.7480, 25.7602, -2.4100

# Sweetspot

The Sweet Spot groups the original color and five complimentary colors.



141.5210, -26.8789, 34.6231



218.9280, -10.8105, 14.0951



120.8060, 7.9836, 52.7901



108.0350, -6.4263, 7.8623



245.0000, 0.0000, 0.0000



117.0000, 0.0000, 0.0000



# Same Dimension

The Same Dimension uses a secret algorithm to generate beautiful new colors.



141.5210, -26.8789, 34.6231



173.7440, -41.7788, 53.7215



168.5230, -40.1908, 10.9423



85.6260, -2.7736, 2.9590



88.5980, -43.6788, 56.4806



14.8180, -7.3053, 9.8066



# Inverse Universe

The Inverse Universe completely reimagines the original color for something new.



126.4790, 26.8789, -34.6231



150.2560, 41.7788, -53.7215



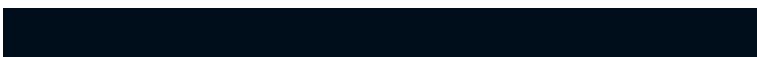
99.4770, 40.1908, -10.9423



83.9610, 2.4842, -3.4738



64.4020, 43.6788, -56.4806

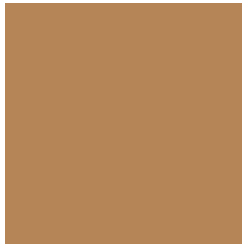


10.5950, 7.5947, -9.2918



# Previews

## White Background



This preview shows how the YUV color 141.5210, -26.8789, 34.6231 looks on a white background.

## Color Contrast Check

Large Text (above 18pt) WCAG AA ✓ Pass

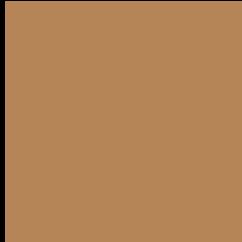
Any Text WCAG AA × Fail

Large Text (above 18pt) WCAG AAA × Fail

Any Text WCAG AAA × Fail



# Black Background



This preview shows how the YUV color 141.5210, -26.8789, 34.6231 looks on a black background.

## Color Contrast Check

Large Text (above 18pt) WCAG AA ✓ Pass

Any Text WCAG AA ✓ Pass

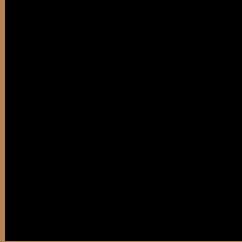
Large Text (above 18pt) WCAG AAA ✓ Pass

Any Text WCAG AAA × Fail

If you want to check with other color combinations, try the [Color Contrast Checker](#).

# YUV 141.5210, -26.8789, 34.6231

## Background



This preview shows how black text looks on a background with the YUV color 141.5210, -26.8789, 34.6231.



This preview shows how white text looks on a background with the YUV color 141.5210, -26.8789, 34.6231.



# Color Blindness Simulation

Color vision deficiency is a very complex topic, and I could not describe the different causes any better than Wikipedia does, so if you want to learn more, you should check out their [article about color blindness](#).

## Dichromacy



### Original Color

141.5210, -26.8789, 34.6231

### Protanopia

140.0730, -24.1930, 13.0910

### Deuteranopia

141.0640, -27.1466, 27.1309



## Tritanopia

144.7810, -4.3290, 35.2721

# Trichromacy



## Original Color

141.5210, -26.8789, 34.6231

## Protanomaly

140.3020, -24.7989, 20.7831

## Deuteranomaly

141.3740, -27.2994, 29.4900

## Tritanomaly

143.6040, -12.6228, 35.4273

# Monochromacy



## Original Color

141.5210, -26.8789, 34.6231

## Achromatopsia

142.0000, 0.0000, 0.0000

## Achromatomaly

141.5580, -9.6421, 12.6656

# CSS Examples

## Text

The CSS property to change the color of the text to YUV 141.5210, -26.8789, 34.6231 is called "color". The color property can be set on classes, ids or directly on the HTML element.

This example shows how text in the color `rgb(181, 132, 87)` looks like.

```
.text, #text, p{  
    color:rgb(181, 132, 87)  
}
```

If you want to add a text shadow in that color use the text-shadow property, you can generate a text shadow directly with our [CSS Text Shadow Generator](#).

Here you see how black text with a 4 pixel rgb(181, 132, 87) colored shadow looks like.

```
.shadow{ text-shadow: 4px 4px 2px rgb(181, 132, 87) }
```

## Border

The CSS property to change the border of an element to YUV 141.5210, -26.8789, 34.6231 is called "border".

The border property can be set on classes, ids or directly on the HTML element.

This example shows the color as border, it can be applied via the CSS property "border" or "border-color".

```
.border, #border, table{ border:4px solid rgb(181, 132, 87) }
```



If only the border color should be changed use the property `border-color`.

```
.border{ border-color:rgb(181, 132, 87) }
```

If you want to add a box shadow in that color use:

Here you see how a box with a 4 pixel `rgb(181, 132, 87)` colored shadow looks like.

```
.boxshadow{ -moz-box-shadow:4px 4px 4px  
4px rgb(181, 132, 87); -webkit-box-  
shadow:4px 4px 4px 4px rgb(181, 132, 87);  
box-shadow:4px 4px 4px 4px rgb(181, 132,  
87) }
```

# Background

The CSS property to change the background color of an element to YUV 141.5210, -26.8789, 34.6231 is called "background". The background property can be set on classes, ids or directly on the HTML element.

```
.background, #background, body{  
background: rgb(181, 132, 87) }
```

If only the background color should be changed can be used:

```
.background{ background-color: rgb(181,  
132, 87) }
```

This example shows the color as background, it is applied via the CSS property "background".

To optimize and compress your CSS code, you can use our [online CSS compressor and optimizer](#) based on csstidy. If you want to create a linear or radial gradient as background or border, check our [CSS Gradient Generator](#).

Hey! You found this booklet interesting? Support Converting Colors with the new Membership Option!

The pro membership hides all ads, plus gives you double the colors in the color bucket, and more awesome pro features!

**[Learn more, Memberships starting at \\$2.50/m!](#)**

**Follow me  
on Twitter!**

@ConvertingColor