

Converting Colors

YUV(141.5910, -22.9694,
40.7007)

Have a look what the booklet for
YUV(141.5910, -22.9694, 40.7007)
contains.

YUV(141.5910, -22.9694, 40.7007)	3
<i>Conversions</i>	4
<i>Details</i>	6
<i>Harmonies</i>	12
<i>Previews</i>	24
<i>Color Blindness Simulation</i>	28
<i>CSS Examples</i>	31

Color

**YUV(141.5910, -22.9694,
40.7007)**

Conversions

Conversions Part 1

Format	Color
Hex	BC7F5F
RGB	188, 127, 95
RGB Percent	74%, 50%, 37%
CMY	0.2627, 0.5020, 0.6275
CMYK	0.00, 0.32, 0.49, 0.26
HSL	21°, 41%, 55%
HSV	21°, 49%, 74%
XYZ	30.3940, 26.6963, 14.3774
YIQ	141.5910, 46.6280, 2.9800

Conversions

Conversions Part 2

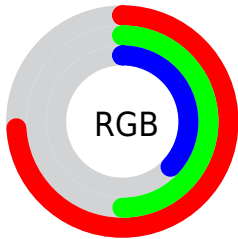
Format	Color
R _Y B	188, 144, 95
Decimal	12353375
CIE Lab	58.69, 19.97, 26.94
CIE LCh	59, 33.529, 53.450
Yxy	26.6963, 0.4253, 0.3735
Android (android.graphics.Color)	4290543455 (0xFFBC7F5F)
YUV	141.5910, -22.9694, 40.7007
Hunter-Lab	51.6685, 14.5827, 19.6697

Details

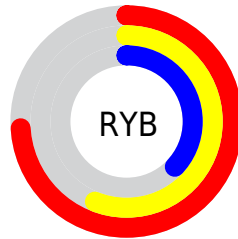
The YUV color **141.5910, -22.9694, 40.7007** is a dark color, and the websafe version is hex **CC9966**. A complement of this color would be **141.4090, 22.9694, -40.7007**, and the grayscale version is **142.0000, 0.0000, 0.0000**.

A 20% lighter version of the original color is **195.8580, -24.5800, 43.9745**, and **90.1390, -20.7745, 36.7121** is the 20% darker color. If you saturate the color by 10%, you get **132.3810, -27.7958, 48.7779**, and if you desaturate by 10%, it is **150.8010, -18.1429, 32.6235**.

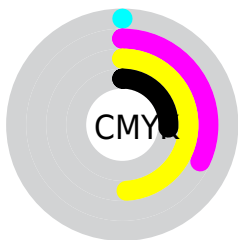
Distribution



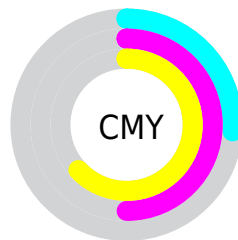
- Red (74%)
- Green (50%)
- Blue (37%)



- Red (74%)
- Yellow (56%)
- Blue (37%)



- Cyan (0%)
- Magenta (32%)
- Yellow (49%)
- Black (26%)



- Cyan (26%)
- Magenta (50%)
- Yellow (63%)

Brightness & Saturation Gradients

These gradients show how the YUV color 141.5910, -22.9694, 40.7007 changes by changing the brightness by 10 percent. The first figure shows a shift by +10% for each color and the second figure -10%.

Similar to the brightness gradients but the following saturation gradients show a change of the YUV color 141.5910, -22.9694, 40.7007 by changing the saturation by 10% instead.

■ 141.5910,
-22.9694, 40.7007

■ 141.5910,
-22.9694, 40.7007

■ 255.0000, 0.0000,
0.0000

■ 115.8080,
-22.0903, 38.7564

■ 195.8580,
-24.5800, 43.9745

■ 90.1390, -20.7745,
36.7121

■ 218.0630,
-22.2161, 32.3937

■ 66.0570, -19.7481,
34.1530

■ 237.5770,
-18.5255, 15.2800

■ 42.3340, -19.8847,
31.2791

■ 251.9220,
-11.7935, 2.6994

■ 22.0050, -10.8485,
26.3056

■ 8.4860, -3.6906,
17.1138

■ 0.0000, 0.0000,

0.0000

■ 141.5910,
-22.9694, 40.7007

■ 141.5910,
-22.9694, 40.7007

■ 132.3810,
-27.7958, 48.7779

■ 150.8010,
-18.1429, 32.6235

■ 122.5840,
-32.3329, 57.3698

■ 160.5980,
-13.6058, 24.0316

■ 113.4880,
-36.7226, 65.3470

■ 169.6940, -9.2161,
16.0544

■ 104.2780,
-41.5491, 73.4242

■ 178.9040, -4.3897,
7.9772

■ 94.4810, -46.0861,
82.0162

■ 188.7010, 0.1474,
-0.6148

■ 94.3670, -46.5229,
82.1161

■ 197.9110, 4.9739,
-8.6919

■ 207.1210, 9.8003,
-16.7691

■ 216.8040, 13.9006,
-25.2611

■ 224.9880, 14.7959,
-32.4385

Harmonies

Analogous

The Analogous color harmony consists of three colors that are next to each other on the color wheel.



143.2080, -11.9345, 48.0526



141.5910, -22.9694, 40.7007



139.4010, -28.2987, 23.3273

Triad

The Triadic color harmony groups three colors that are evenly spaced from another and form a triangle on the color wheel.



141.5910, -22.9694, 40.7007



125.5710, 3.6625, -54.8748



142.4270, 25.9185, -6.5135

Complementary

The Complementary color scheme is a pair of colors which are on the opposite of each other on the color wheel.



141.5910, -22.9694, 40.7007



141.4090, 22.9694, -40.7007

Split Complementary

Split-complementary colors differ from the complementary color scheme. The scheme consists of three colors, the original color and two neighbors of the complement color.



134.1020, 31.9947, -42.1855



141.5910, -22.9694, 40.7007



114.1440, 24.5790, -90.4573

Square

The Square scheme is like the rectangle color scheme, but the four colors are evenly spaced on the color wheel.



141.5910, -22.9694, 40.7007



132.5780, -13.5960, -25.9399



119.9140, 33.5664, -79.7316



144.9810, 15.7854, 23.6957

Rectangle

The Rectangle color scheme consists of four colors that form a rectangle on the color wheel.



141.5910, -22.9694, 40.7007



137.9430, -27.0869, 7.9430



119.9140, 33.5664, -79.7316



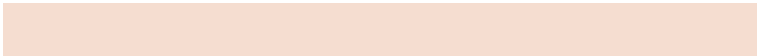
140.6320, 28.2824, -18.0943

Sweetspot

The Sweet Spot groups the original color and five complimentary colors.



141.5910, -22.9694, 40.7007



226.6940, -9.2161, 16.0544



129.8750, 13.3726, 50.9756



111.2740, -5.5581, 9.4067



250.0000, 0.0000, 0.0000



122.0000, 0.0000, 0.0000

Same Dimension

The Same Dimension uses a secret algorithm to generate beautiful new colors.



141.5910, -22.9694, 40.7007



172.7050, -35.8436, 63.4027



168.5930, -36.2813, 17.0199



89.4520, -2.1948, 3.9886



78.9400, -38.9174, 69.3356



15.7260, -7.7529, 13.3953

Inverse Universe

The Inverse Universe completely reimagines the original color for something new.



141.4090, 22.9694, -40.7007



172.2950, 35.8436, -63.4027



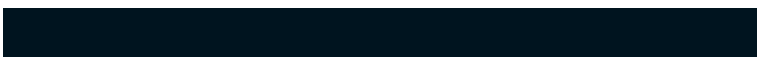
114.9940, 35.9920, -17.5347



89.5480, 2.1948, -3.9886



79.0600, 38.9174, -69.3356



15.2740, 7.7529, -13.3953

Previews

White Background



This preview shows how the YUV color 141.5910, -22.9694, 40.7007 looks on a white background.

Color Contrast Check

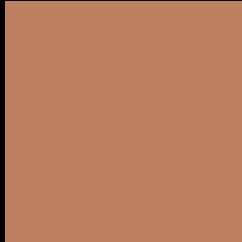
Large Text (above 18pt) WCAG AA ✓ Pass

Any Text WCAG AA × Fail

Large Text (above 18pt) WCAG AAA × Fail

Any Text WCAG AAA × Fail

Black Background



This preview shows how the YUV color 141.5910, -22.9694, 40.7007 looks on a black background.

Color Contrast Check

Large Text (above 18pt) WCAG AA ✓ Pass

Any Text WCAG AA ✓ Pass

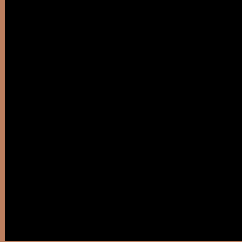
Large Text (above 18pt) WCAG AAA ✓ Pass

Any Text WCAG AAA × Fail

If you want to check with other color combinations, try the [Color Contrast Checker](#).

YUV 141.5910, -22.9694, 40.7007

Background



This preview shows how black text looks on a background with the YUV color 141.5910, -22.9694, 40.7007.



This preview shows how white text looks on a background with the YUV color 141.5910, -22.9694,

Color Blindness Simulation

Color vision deficiency is a very complex topic, and I could not describe the different causes any better than Wikipedia does, so if you want to learn more, you should check out their [article about color blindness](#).

Dichromacy



Original Color

141.5910, -22.9694, 40.7007

Protanopia

139.7290, -19.0934, 10.7617

Deuteranopia

140.6770, -23.5048, 25.7163



Tritanopia

143.6570, -6.2399, 41.5198

Trichromacy



Original Color

141.5910, -22.9694, 40.7007

Protanomaly

140.4530, -20.4363, 21.5277

Deuteranomaly

141.1230, -23.2316, 31.4641

Tritanomaly

143.0500, -12.3496, 41.1752

Monochromacy



Original Color

141.5910, -22.9694, 40.7007

Achromatopsia

142.0000, 0.0000, 0.0000

Achromatomaly

142.2100, -8.4845, 14.7248

CSS Examples

Text

The CSS property to change the color of the text to YUV 141.5910, -22.9694, 40.7007 is called "color". The color property can be set on classes, ids or directly on the HTML element.

This example shows how text in the color `rgb(188, 127, 95)` looks like.

```
.text, #text, p{  
    color:rgb(188, 127, 95)  
}
```

If you want to add a text shadow in that color use the text-shadow property, you can generate a text shadow directly with our [CSS Text Shadow Generator](#).

Here you see how black text with a 4 pixel rgb(188, 127, 95) colored shadow looks like.

```
.shadow{ text-shadow: 4px 4px 2px rgb(188, 127, 95) }
```

Border

The CSS property to change the border of an element to YUV 141.5910, -22.9694, 40.7007 is called "border".

The border property can be set on classes, ids or directly on the HTML element.

This example shows the color as border, it can be applied via the CSS property "border" or "border-color".

```
.border, #border, table{ border:4px solid rgb(188, 127, 95) }
```


If only the border color should be changed use the property `border-color`.

```
.border{ border-color:rgb(188, 127, 95) }
```

If you want to add a box shadow in that color use:

Here you see how a box with a 4 pixel `rgb(188, 127, 95)` colored shadow looks like.

```
.boxshadow{ -moz-box-shadow:4px 4px 4px  
4px rgb(188, 127, 95); -webkit-box-  
shadow:4px 4px 4px 4px rgb(188, 127, 95);  
box-shadow:4px 4px 4px 4px rgb(188, 127,  
95) }
```

Background

The CSS property to change the background color of an element to YUV 141.5910, -22.9694, 40.7007 is called "background". The background property can be set on classes, ids or directly on the HTML element.

```
.background, #background, body{  
background: rgb(188, 127, 95) }
```

If only the background color should be changed can be used:

```
.background{ background-color: rgb(188,  
127, 95) }
```

This example shows the color as background, it is applied via the CSS property "background".

To optimize and compress your CSS code, you can use our [online CSS compressor and optimizer](#) based on csstidy. If you want to create a linear or radial gradient as background or border, check our [CSS Gradient Generator](#).

Hey! You found this booklet interesting? Support Converting Colors with the new Membership Option!

The pro membership hides all ads, plus gives you double the colors in the color bucket, and more awesome pro features!

[Learn more, Memberships starting at \\$2.50/m!](#)

**Follow me
on Twitter!**

@ConvertingColor