

Converting Colors

YUV(141.7330, -8.2494,
32.6832)

Have a look what the booklet for
YUV(141.7330, -8.2494, 32.6832)
contains.

YUV(141.7330, -8.2494, 32.6832)	3
<i>Conversions</i>	4
<i>Details</i>	6
<i>Harmonies</i>	12
<i>Previews</i>	24
<i>Color Blindness Simulation</i>	28
<i>CSS Examples</i>	31

Color

**YUV(141.7330, -8.2494,
32.6832)**

Conversions

Conversions Part 1

Format	Color
Hex	B37E7D
RGB	179, 126, 125
RGB Percent	70%, 49%, 49%
CMY	0.2980, 0.5059, 0.5098
CMYK	0.00, 0.30, 0.30, 0.30
HSL	1°, 26%, 60%
HSV	1°, 30%, 70%
XYZ	29.7529, 25.9861, 22.8497
YIQ	141.7330, 31.9090, 10.9250

Conversions

Conversions Part 2

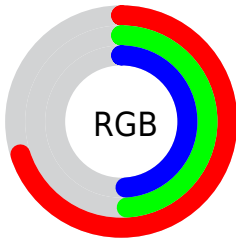
Format	Color
R _{YB}	179, 126, 125
Decimal	11763325
CIE _{Lab}	58.02, 20.43, 8.78
CIE _{LCh}	58, 22.233, 23.250
Yxy	25.9861, 0.3786, 0.3307
Android (android.graphics.Color)	4289953405 (0xFFB37E7D)
YUV	141.7330, -8.2494, 32.6832
Hunter-Lab	50.9765, 14.9742, 9.1075

Details

The YUV color **141.7330, -8.2494, 32.6832** is a dark color, and the websafe version is hex **996666**. A complement of this color would be **162.2670, 8.2494, -32.6832**, and the grayscale version is **142.0000, 0.0000, 0.0000**.

A 20% lighter version of the original color is **195.9290, -8.8390, 35.1423**, and **90.6510, -7.2229, 30.1241** is the 20% darker color. If you saturate the color by 10%, you get **129.1150, -10.9027, 43.7491**, and if you desaturate by 10%, it is **154.3510, -5.5960, 21.6172**.

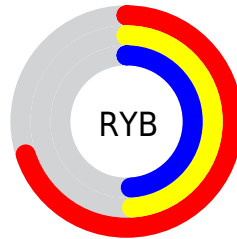
Distribution



Red (70%)

Green (49%)

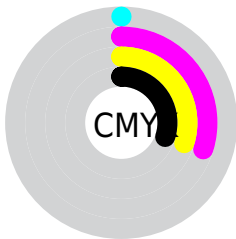
Blue (49%)



Red (70%)

Yellow (49%)

Blue (49%)

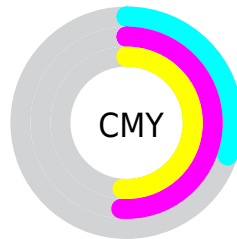


Cyan (0%)

Magenta (30%)

Yellow (30%)

Black (30%)



Cyan (30%)


Magenta (51%)


Yellow (51%)

Brightness & Saturation Gradients


These gradients show how the YUV color 141.7330, -8.2494, 32.6832 changes by changing the brightness by 10 percent. The first figure shows a shift by +10% for each color and the second figure -10%.


Similar to the brightness gradients but the following saturation gradients show a change of the YUV color 141.7330, -8.2494, 32.6832 by changing the saturation by 10% instead.


 141.7330, -8.2494,
32.6832


 141.7330, -8.2494,
32.6832


255.0000, 0.0000,
0.0000

 116.1350, -7.9546,
31.4536


 195.9290, -8.8390,
35.1423


 90.6510, -7.2229,
30.1241


 221.1240, -7.9491,
29.7093

 66.8680, -6.3439,
28.1798

 240.7520, -3.8217,
12.4955

 43.9710, -5.9017,
26.3354

 21.2590, -6.0437,
25.2059

 7.2900, -3.1010,
14.6547

 0.0000, 0.0000,

0.0000

■ 141.7330, -8.2494,
32.6832

■ 141.7330, -8.2494,
32.6832

■ 129.1150,
-10.9027, 43.7491

■ 154.3510, -5.5960,
21.6172

■ 117.0840,
-13.8454, 54.3003

■ 166.3820, -2.6533,
11.0660

■ 104.4660,
-16.4987, 65.3663

■ 179.0000, 0.0000,
0.0000

■ 92.4350, -19.4415,
75.9175

■ 191.0310, 2.9427,
-10.5512

■ 79.8170, -22.0948,
86.9835

■ 203.5350, 5.1592,
-21.5172

■ 67.9000, -24.6007,
97.4347

■ 215.5660, 8.1020,
-32.0684

■ 55.2820, -27.2540,
108.5007

■ 228.1840, 10.7553,
-43.1344

■ 232.2760, 11.2029,
-46.7231

Harmonies

Analogous

The Analogous color harmony consists of three colors that are next to each other on the color wheel.



142.8170, 1.0762, 28.2245



141.7330, -8.2494, 32.6832



140.4630, -15.5113, 28.5349

Triad

The Triadic color harmony groups three colors that are evenly spaced from another and form a triangle on the color wheel.



141.7330, -8.2494, 32.6832



134.4850, -9.1131, -17.0883



136.8240, 20.2998, -24.4016

Complementary

The Complementary color scheme is a pair of colors which are on the opposite of each other on the color wheel.



141.7330, -8.2494, 32.6832



162.2670, 8.2494, -32.6832

Split Complementary

Split-complementary colors differ from the complementary color scheme. The scheme consists of three colors, the original color and two neighbors of the complement color.



132.2690, 18.6014, -39.7009



141.7330, -8.2494, 32.6832



131.7310, 1.1186, -32.2131

Square

The Square scheme is like the rectangle color scheme, but the four colors are evenly spaced on the color wheel.



141.7330, -8.2494, 32.6832



136.9450, -16.7349, 0.9252



130.1240, 11.7709, -42.2047



140.7450, 16.8877, -3.2844

Rectangle

The Rectangle color scheme consists of four colors that form a rectangle on the color wheel.



141.7330, -8.2494, 32.6832



139.1370, -17.8155, 20.9279



130.1240, 11.7709, -42.2047



134.7910, 20.3160, -29.6347

Sweetspot

The Sweet Spot groups the original color and five complimentary colors.



141.7330, -8.2494, 32.6832



217.8660, -3.3849, 12.3955



147.1880, 15.1903, 27.8991



108.4740, -2.2057, 7.4773



245.0000, 0.0000, 0.0000



117.0000, 0.0000, 0.0000

Same Dimension

The Same Dimension uses a secret algorithm to generate beautiful new colors.



141.7330, -8.2494, 32.6832



174.4040, -12.5242, 50.5117



157.5820, -16.0629, 18.7836



82.6910, -1.3267, 5.5330



47.5080, -23.4214, 92.5165



7.7740, -3.8326, 15.9842

Inverse Universe

The Inverse Universe completely reimagines the original color for something new.



162.2670, 8.2494, -32.6832



206.5960, 12.5242, -50.5117



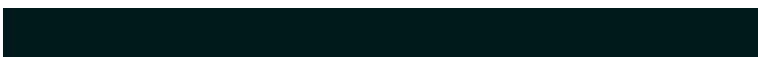
146.4180, 16.0629, -18.7836



86.3090, 1.3267, -5.5330



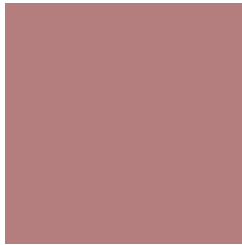
105.4920, 23.4214, -92.5165



17.6390, 4.1220, -15.4694

Previews

White Background



This preview shows how the YUV color 141.7330, -8.2494, 32.6832 looks on a white background.

Color Contrast Check

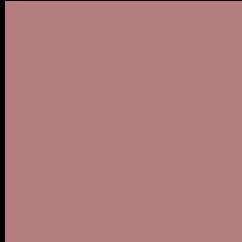
Large Text (above 18pt) WCAG AA ✓ Pass

Any Text WCAG AA × Fail

Large Text (above 18pt) WCAG AAA × Fail

Any Text WCAG AAA × Fail

Black Background



This preview shows how the YUV color 141.7330, -8.2494, 32.6832 looks on a black background.

Color Contrast Check

Large Text (above 18pt) WCAG AA ✓ Pass

Any Text WCAG AA ✓ Pass

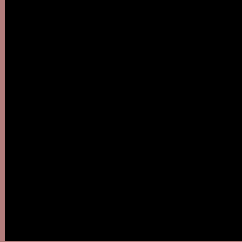
Large Text (above 18pt) WCAG AAA ✓ Pass

Any Text WCAG AAA × Fail

If you want to check with other color combinations, try the [Color Contrast Checker](#).

YUV 141.7330, -8.2494, 32.6832

Background



This preview shows how black text looks on a background with the YUV color 141.7330, -8.2494, 32.6832.



This preview shows how white text looks on a background with the YUV color 141.7330, -8.2494,

Color Blindness Simulation

Color vision deficiency is a very complex topic, and I could not describe the different causes any better than Wikipedia does, so if you want to learn more, you should check out their [article about color blindness](#).

Dichromacy



Original Color

141.7330, -8.2494, 32.6832

Protanopia

139.6970, -3.7946, 3.7737

Deuteranopia

140.8080, -8.7793, 15.9544



Tritanopia

142.4710, -4.1762, 32.9129

Trichromacy



Original Color

141.7330, -8.2494, 32.6832

Protanomaly

140.3070, -5.5744, 14.6398

Deuteranomaly

141.2540, -8.5062, 21.7022

Tritanomaly

142.1290, -5.4866, 33.2129

Monochromacy



Original Color

141.7330, -8.2494, 32.6832

Achromatopsia

142.0000, 0.0000, 0.0000

Achromatomaly

141.6810, -2.8007, 11.6808

CSS Examples

Text

The CSS property to change the color of the text to YUV 141.7330, -8.2494, 32.6832 is called "color". The color property can be set on classes, ids or directly on the HTML element.

This example shows how text in the color `rgb(179, 126, 125)` looks like.

```
.text, #text, p{  
    color:rgb(179, 126, 125)  
}
```

If you want to add a text shadow in that color use the text-shadow property, you can generate a text shadow directly with our [CSS Text Shadow Generator](#).

Here you see how black text with a 4 pixel rgb(179, 126, 125) colored shadow looks like.

```
.shadow{ text-shadow: 4px 4px 2px rgb(179, 126, 125) }
```

Border

The CSS property to change the border of an element to YUV 141.7330, -8.2494, 32.6832 is called "border". The border property can be set on classes, ids or directly on the HTML element.

This example shows the color as border, it can be applied via the CSS property "border" or "border-color".

```
.border, #border, table{ border:4px solid rgb(179, 126, 125) }
```


If only the border color should be changed use the property `border-color`.

```
.border{ border-color:rgb(179, 126, 125) }
```

If you want to add a box shadow in that color use:

Here you see how a box with a 4 pixel `rgb(179, 126, 125)` colored shadow looks like.

```
.boxshadow{ -moz-box-shadow:4px 4px 4px  
4px rgb(179, 126, 125); -webkit-box-  
shadow:4px 4px 4px 4px rgb(179, 126, 125);  
box-shadow:4px 4px 4px 4px rgb(179, 126,  
125) }
```

Background

The CSS property to change the background color of an element to YUV 141.7330, -8.2494, 32.6832 is called "background". The background property can be set on classes, ids or directly on the HTML element.

```
.background, #background, body{  
background: rgb(179, 126, 125) }
```

If only the background color should be changed can be used:

```
.background{ background-color: rgb(179,  
126, 125) }
```

This example shows the color as background, it is applied via the CSS property "background".

To optimize and compress your CSS code, you can use our [online CSS compressor and optimizer](#) based on csstidy. If you want to create a linear or radial gradient as background or border, check our [CSS Gradient Generator](#).

Hey! You found this booklet interesting? Support Converting Colors with the new Membership Option!

The pro membership hides all ads, plus gives you double the colors in the color bucket, and more awesome pro features!

[Learn more, Memberships starting at \\$2.50/m!](#)

**Follow me
on Twitter!**

@ConvertingColor