

Converting Colors

YUV(141.7520, -3.3287,
87.9175)

Have a look what the booklet for
YUV(141.7520, -3.3287, 87.9175)
contains.

YUV(141.7520, -3.3287, 87.9175)	3
<i>Conversions</i>	4
<i>Details</i>	6
<i>Harmonies</i>	12
<i>Previews</i>	24
<i>Color Blindness Simulation</i>	28
<i>CSS Examples</i>	31

Color

**YUV(141.7520, -3.3287,
87.9175)**

Conversions

Conversions Part 1

Format	Color
Hex	F25C87
RGB	242, 92, 135
RGB Percent	95%, 36%, 53%
CMY	0.0510, 0.6392, 0.4706
CMYK	0.00, 0.62, 0.44, 0.05
HSL	343°, 85%, 65%
HSV	343°, 62%, 95%
XYZ	44.8183, 28.2808, 26.0182
YIQ	141.7520, 75.5970, 45.1730

Conversions

Conversions Part 2

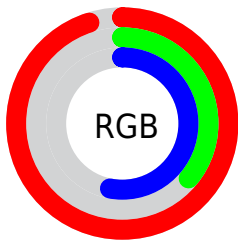
Format	Color
R_{YB}	242, 92, 135
Decimal	15883399
CIE _{Lab}	60.14, 60.98, 7.17
CIE _{LCh}	60, 61.396, 6.706
Yxy	28.2808, 0.4522, 0.2853
Android (android.graphics.Color)	4294073479 (0xFFFF25C87)
YUV	141.7520, -3.3287, 87.9175
Hunter-Lab	53.1797, 57.3700, 8.2181

Details

The YUV color **141.7520, -3.3287, 87.9175** is a light color, and the websafe version is hex **FF6699**. The color can be described as light muted rose. A complement of this color would be **192.2480, 3.3287, -87.9175**, and the grayscale version is **142.0000, 0.0000, 0.0000**.

A 20% lighter version of the original color is **185.1400, 1.4100, 61.2672**, and **80.3590, 2.7810, 88.2622** is the 20% darker color. If you saturate the color by 10%, you get **125.7260, -3.8089, 101.9723**, and if you desaturate by 10%, it is **157.7780, -2.8486, 73.8627**.

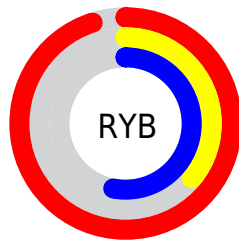
Distribution



Red (95%)

Green (36%)

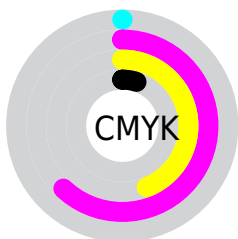
Blue (53%)



Red (95%)

Yellow (36%)

Blue (53%)

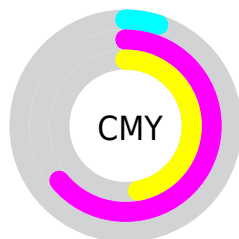


Cyan (0%)

Magenta (62%)

Yellow (44%)

Black (5%)



Cyan (5%)

Magenta (64%)

Yellow (47%)

Brightness & Saturation Gradients

These gradients show how the YUV color 141.7520, -3.3287, 87.9175 changes by changing the brightness by 10 percent. The first figure shows a shift by +10% for each color and the second figure -10%.

Similar to the brightness gradients but the following saturation gradients show a change of the YUV color 141.7520, -3.3287, 87.9175 by changing the saturation by 10% instead.

141.7520, -3.3287,
87.9175

141.7520, -3.3287,
87.9175

255.0000, 0.0000,
0.0000

112.6100, -1.2867,
86.2880

185.1400, 1.4100,
61.2672

80.3590, 2.7810,
88.2622

204.7680, 5.5374,
44.0535

52.3310, 5.2598,
86.5327

224.9830, 9.3754,
26.3249

41.1520, -0.0749,
70.9037

243.8470, 5.4984,
9.7812

29.9020, -4.3887,
54.4599

20.0760, -8.4185,
40.2753

9.6820, -4.2802,

19.5729

■ 0.0000, 0.0000,
0.0000

■ 141.7520, -3.3287,
87.9175

■ 141.7520, -3.3287,
87.9175

■ 125.7260, -3.8089,
101.9723

■ 157.7780, -2.8486,
73.8627

■ 109.5860, -4.7259,
116.1271

■ 173.9180, -1.9316,
59.7079

■ 92.9730, -4.9167,
130.6967

■ 190.5310, -1.7408,
45.1383

■ 80.2240, -5.5334,
141.8776

■ 206.5570, -1.2606,
31.0835

■ 222.5830, -0.7804,
17.0287

■ 238.7230, 0.1366,
2.8739

■ 251.1130, 1.9163,
-7.9921

Harmonies

Analogous

The Analogous color harmony consists of three colors that are next to each other on the color wheel.



146.9010, 20.7548, 63.2308



141.7520, -3.3287, 87.9175



140.7750, -28.4831, 82.6353

Triad

The Triadic color harmony groups three colors that are evenly spaced from another and form a triangle on the color wheel.



141.7520, -3.3287, 87.9175



130.7160, -39.7930, -23.4299



122.9100, 59.6974, -107.7921

Complementary

The Complementary color scheme is a pair of colors which are on the opposite of each other on the color wheel.



141.7520, -3.3287, 87.9175



192.2480, 3.3287, -87.9175

Split Complementary

Split-complementary colors differ from the complementary color scheme. The scheme consists of three colors, the original color and two neighbors of the complement color.



122.9150, 41.9469, -107.7965



141.7520, -3.3287, 87.9175



110.0160, -4.9379, -96.4840

Square

The Square scheme is like the rectangle color scheme, but the four colors are evenly spaced on the color wheel.



141.7520, -3.3287, 87.9175



136.0070, -57.6845, 21.9189



118.1610, 18.6546, -103.6272



123.8020, 63.6946, -83.1414

Rectangle

The Rectangle color scheme consists of four colors that form a rectangle on the color wheel.



141.7520, -3.3287, 87.9175



141.0770, -43.4220, 67.4615



118.1610, 18.6546, -103.6272



123.6450, 54.8980, -108.4367

Sweetspot

The Sweet Spot groups the original color and five complimentary colors.



141.7520, -3.3287, 87.9175



222.8340, -1.3972, 28.2096



140.4950, 50.0420, 49.5549



107.9960, -0.4910, 17.5435



0.0000, 0.0000, 0.0000



128.0000, 0.0000, 0.0000

Same Dimension

The Same Dimension uses a secret algorithm to generate beautiful new colors.



141.7520, -3.3287, 87.9175



128.6670, -4.2728, 110.7940



154.4600, -30.7928, 76.7726



111.9300, -0.4585, 7.0774



61.0580, -3.9726, 107.8201



18.5680, -1.2660, 32.8279

Inverse Universe

The Inverse Universe completely reimagines the original color for something new.



141.7520, -3.3287, 87.9175



128.6670, -4.2728, 110.7940



179.5400, 30.7928, -76.7726



111.9300, -0.4585, 7.0774



61.0580, -3.9726, 107.8201



18.5680, -1.2660, 32.8279

Previews

White Background



This preview shows how the YUV color 141.7520, -3.3287, 87.9175 looks on a white background.

Color Contrast Check

Large Text (above 18pt) WCAG AA ✓ Pass

Any Text WCAG AA × Fail

Large Text (above 18pt) WCAG AAA × Fail

Any Text WCAG AAA × Fail

Black Background



This preview shows how the YUV color 141.7520, -3.3287, 87.9175 looks on a black background.

Color Contrast Check

Large Text (above 18pt) WCAG AA ✓ Pass

Any Text WCAG AA ✓ Pass

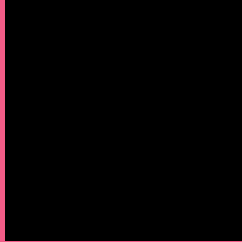
Large Text (above 18pt) WCAG AAA ✓ Pass

Any Text WCAG AAA × Fail

If you want to check with other color combinations, try the [Color Contrast Checker](#).

YUV 141.7520, -3.3287, 87.9175

Background



This preview shows how black text looks on a background with the YUV color 141.7520, -3.3287, 87.9175.



This preview shows how white text looks on a background with the YUV color 141.7520, -3.3287,

87.9175.

Color Blindness Simulation

Color vision deficiency is a very complex topic, and I could not describe the different causes any better than Wikipedia does, so if you want to learn more, you should check out their [article about color blindness](#).

Dichromacy



Original Color

141.7520, -3.3287, 87.9175

Protanopia

145.7960, 9.4676, -3.3291

Deuteranopia

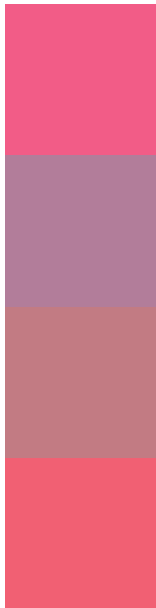
146.4060, -9.0742, 17.1839



Tritanopia

141.1420, -18.3110, 86.6985

Trichromacy



Original Color

141.7520, -3.3287, 87.9175

Protanomaly

144.1530, 4.8546, 29.6838

Deuteranomaly

145.1410, -6.9715, 42.8493

Tritanomaly

141.5210, -13.0749, 87.2431

Monochromacy



Original Color

141.7520, -3.3287, 87.9175

Achromatopsia

142.0000, 0.0000, 0.0000

Achromatomaly

141.8560, -1.4080, 31.6983

CSS Examples

Text

The CSS property to change the color of the text to YUV 141.7520, -3.3287, 87.9175 is called "color". The color property can be set on classes, ids or directly on the HTML element.

This example shows how text in the color `rgb(242, 92, 135)` looks like.

```
.text, #text, p{  
    color:rgb(242, 92, 135)  
}
```

If you want to add a text shadow in that color use the text-shadow property, you can generate a text shadow directly with our [CSS Text Shadow Generator](#).

Here you see how black text with a 4 pixel rgb(242, 92, 135) colored shadow looks like.

```
.shadow{ text-shadow: 4px 4px 2px rgb(242, 92, 135) }
```

Border

The CSS property to change the border of an element to YUV 141.7520, -3.3287, 87.9175 is called "border". The border property can be set on classes, ids or directly on the HTML element.

This example shows the color as border, it can be applied via the CSS property "border" or "border-color".

```
.border, #border, table{ border:4px solid rgb(242, 92, 135) }
```


If only the border color should be changed use the property border-color.

```
.border{ border-color:rgb(242, 92, 135) }
```

If you want to add a box shadow in that color use:

Here you see how a box with a 4 pixel rgb(242, 92, 135) colored shadow looks like.

```
.boxshadow{ -moz-box-shadow:4px 4px 4px  
4px rgb(242, 92, 135); -webkit-box-  
shadow:4px 4px 4px 4px rgb(242, 92, 135);  
box-shadow:4px 4px 4px 4px rgb(242, 92,  
135) }
```

Background

The CSS property to change the background color of an element to YUV 141.7520, -3.3287, 87.9175 is called "background". The background property can be set on classes, ids or directly on the HTML element.

```
.background, #background, body{  
background: rgb(242, 92, 135) }
```

If only the background color should be changed can be used:

```
.background{ background-color: rgb(242, 92,  
135) }
```

This example shows the color as background, it is applied via the CSS property "background".

To optimize and compress your CSS code, you can use our [online CSS compressor and optimizer](#) based on csstidy. If you want to create a linear or radial gradient as background or border, check our [CSS Gradient Generator](#).

Hey! You found this booklet interesting? Support Converting Colors with the new Membership Option!

The pro membership hides all ads, plus gives you double the colors in the color bucket, and more awesome pro features!

[Learn more, Memberships starting at \\$2.50/m!](#)

**Follow me
on Twitter!**

@ConvertingColor