

Converting Colors

YUV(141.7670, -16.6471,
19.4983)

Have a look what the booklet for
YUV(141.7670, -16.6471, 19.4983)
contains.

| | |
|--|----|
| YUV(141.7670, -16.6471, 19.4983) | 3 |
| <i>Conversions</i> | 4 |
| <i>Details</i> | 6 |
| <i>Harmonies</i> | 12 |
| <i>Previews</i> | 24 |
| <i>Color Blindness Simulation</i> | 28 |
| <i>CSS Examples</i> | 31 |

Color

**YUV(141.7670, -16.6471,
19.4983)**

Conversions

Conversions Part 1

| Format | Color |
|---------------|----------------------------|
| Hex | A4896C |
| RGB | 164, 137, 108 |
| RGB Percent | 64%, 54%, 42% |
| CMY | 0.3569, 0.4627, 0.5765 |
| CMYK | 0.00, 0.16, 0.34, 0.36 |
| HSL | 31°, 24%, 53% |
| HSV | 31°, 34%, 64% |
| XYZ | 26.9623, 26.8665, 17.9521 |
| YIQ | 141.7670, 25.4010, -3.2950 |

Conversions

Conversions Part 2

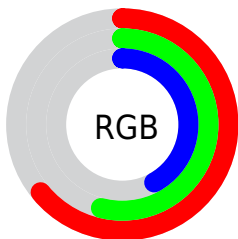
| Format | Color |
|-------------------------------------|--------------------------------|
| R_{YB} | 160, 164, 108 |
| Decimal | 10783084 |
| CIE _{Lab} | 58.85, 5.90, 19.38 |
| CIE _{LCh} | 59, 20.262, 73.074 |
| Yxy | 26.8665, 0.3756, 0.3743 |
| Android (android.graphics.Color) | 4288973164 (0xFFA4896C) |
| YUV | 141.7670, -16.6471, 19.4983 |
| Hunter-Lab | 51.8329, 2.1438, 15.7483 |

Details

The YUV color $141.7670, -16.6471, 19.4983$ is a dark color, and the websafe version is hex 999966 . A complement of this color would be $130.2330, 16.6471, -19.4983$, and the grayscale version is $142.0000, 0.0000, 0.0000$.

A 20% lighter version of the original color is $195.5500, -17.5262, 21.4426$, and $91.0980, -15.3313, 17.4541$ is the 20% darker color. If you saturate the color by 10%, you get $135.2470, -21.3208, 25.2164$, and if you desaturate by 10%, it is $148.2870, -11.9735, 13.7803$.

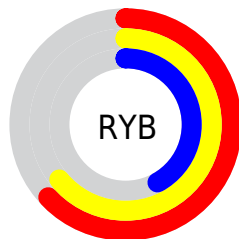
Distribution



Red (64%)

Green (54%)

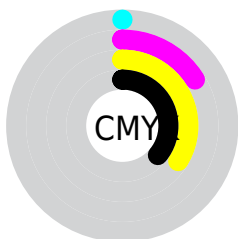
Blue (42%)



Red (63%)

Yellow (64%)

Blue (42%)

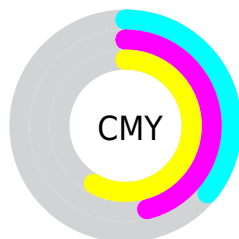


Cyan (0%)

Magenta (16%)

Yellow (34%)

Black (36%)



Cyan (36%)

Magenta (46%)

Yellow (58%)

Brightness & Saturation Gradients

These gradients show how the YUV color 141.7670, -16.6471, 19.4983 changes by changing the brightness by 10 percent. The first figure shows a shift by +10% for each color and the second figure -10%.

Similar to the brightness gradients but the following saturation gradients show a change of the YUV color 141.7670, -16.6471, 19.4983 by changing the saturation by 10% instead.

■ 141.7670,
-16.6471, 19.4983

■ 141.7670,
-16.6471, 19.4983

255.0000, 0.0000,
0.0000

■ 116.2830,
-15.9155, 18.1688

■ 195.5500,
-17.5262, 21.4426

■ 91.0980, -15.3313,
17.4541

■ 223.7350,
-18.1104, 22.1574

■ 67.6140, -14.5997,
16.1245

■ 245.6300,
-15.5936, 8.2175

■ 45.1300, -13.8681,
14.7950

■ 253.6320, -5.2416,
1.1997

■ 24.5750, -12.1155,
12.6507

■ 0.5980, -0.2948,
1.2296

■ 0.0000, 0.0000,

0.0000

■ 141.7670,
-16.6471, 19.4983

■ 141.7670,
-16.6471, 19.4983

■ 135.2470,
-21.3208, 25.2164

■ 148.2870,
-11.9735, 13.7803

■ 128.6130,
-26.4312, 31.0344

■ 154.9210, -6.8631,
7.9623

■ 122.0930,
-31.1048, 36.7524

■ 161.4410, -2.1894,
2.2442

■ 115.4590,
-36.2153, 42.5705

■ 168.0750, 2.9210,
-3.5738

■ 108.9390,
-40.8889, 48.2885

■ 174.5950, 7.5947,
-9.2918

■ 103.0060,
-45.8520, 53.4917

■ 180.5280, 12.5577,
-14.4951

■ 98.9310, -48.7730,
57.0655

■ 187.1620, 17.6681,
-20.3131

■ 193.6820, 22.3418,
-26.0311

■ 200.2020, 27.0154,
-31.7492

Harmonies

Analogous

The Analogous color harmony consists of three colors that are next to each other on the color wheel.



143.2610, -12.4537, 27.8351



141.7670, -16.6471, 19.4983



140.0920, -16.3144, 6.0583

Triad

The Triadic color harmony groups three colors that are evenly spaced from another and form a triangle on the color wheel.



141.7670, -16.6471, 19.4983



134.0170, 7.3866, -35.9719



143.8560, 11.9030, 8.8963

Complementary

The Complementary color scheme is a pair of colors which are on the opposite of each other on the color wheel.



141.7670, -16.6471, 19.4983



130.2330, 16.6471, -19.4983

Split Complementary

Split-complementary colors differ from the complementary color scheme. The scheme consists of three colors, the original color and two neighbors of the complement color.



142.0000, 16.7620, -9.6470



141.7670, -16.6471, 19.4983



134.3680, 15.1016, -37.1567

Square

The Square scheme is like the rectangle color scheme, but the four colors are evenly spaced on the color wheel.



141.7670, -16.6471, 19.4983



135.5640, -2.2501, -25.0506



137.6450, 18.4160, -26.8757



144.7670, 3.5659, 23.0063

Rectangle

The Rectangle color scheme consists of four colors that form a rectangle on the color wheel.



141.7670, -16.6471, 19.4983



138.5360, -13.0822, -3.9781



137.6450, 18.4160, -26.8757



143.2790, 13.6665, 3.2633

Sweetspot

The Sweet Spot groups the original color and five complimentary colors.



141.7670, -16.6471, 19.4983



205.7360, -6.2788, 7.2475



127.8220, 3.5388, 31.7281



101.9960, -3.9420, 4.3885



235.0000, 0.0000, 0.0000



107.0000, 0.0000, 0.0000

Same Dimension

The Same Dimension uses a secret algorithm to generate beautiful new colors.



141.7670, -16.6471, 19.4983



179.3140, -26.2838, 30.4196



157.3170, -24.3133, 4.9840



78.6260, -2.7736, 2.9590



87.3800, -43.0783, 50.5327



10.6650, -5.2578, 6.4328

Inverse Universe

The Inverse Universe completely reimagines the original color for something new.



130.2330, 16.6471, -19.4983



161.2730, 25.9944, -30.9344



114.6830, 24.3133, -4.9840



76.3740, 2.7736, -2.9590



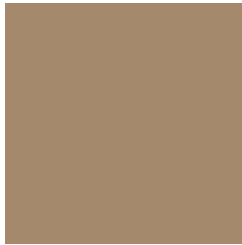
57.6200, 43.0783, -50.5327



7.3350, 5.2578, -6.4328

Previews

White Background



This preview shows how the YUV color 141.7670, -16.6471, 19.4983 looks on a white background.

Color Contrast Check

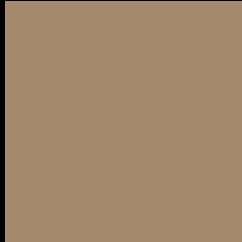
Large Text (above 18pt) WCAG AA ✓ Pass

Any Text WCAG AA × Fail

Large Text (above 18pt) WCAG AAA × Fail

Any Text WCAG AAA × Fail

Black Background



This preview shows how the YUV color 141.7670, -16.6471, 19.4983 looks on a black background.

Color Contrast Check

Large Text (above 18pt) WCAG AA ✓ Pass

Any Text WCAG AA ✓ Pass

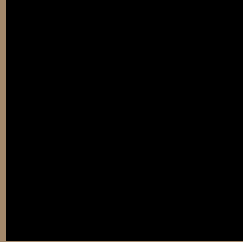
Large Text (above 18pt) WCAG AAA ✓ Pass

Any Text WCAG AAA × Fail

If you want to check with other color combinations, try the [Color Contrast Checker](#).

YUV 141.7670, -16.6471, 19.4983

Background



This preview shows how black text looks on a background with the YUV color 141.7670, -16.6471, 19.4983.



This preview shows how white text looks on a background with the YUV color 141.7670, -16.6471, 19.4983.

Color Blindness Simulation

Color vision deficiency is a very complex topic, and I could not describe the different causes any better than Wikipedia does, so if you want to learn more, you should check out their [article about color blindness](#).

Dichromacy



Original Color

141.7670, -16.6471, 19.4983

Protanopia

141.0430, -15.3042, 8.7323

Deuteranopia

142.0770, -16.8000, 21.8575



Tritanopia

144.0180, -0.5019, 21.0322

Trichromacy



Original Color

141.7670, -16.6471, 19.4983

Protanomaly

141.2500, -15.8992, 12.9358

Deuteranomaly

141.7780, -16.6526, 21.2427

Tritanomaly

143.4110, -6.6116, 20.6876

Monochromacy



Original Color

141.7670, -16.6471, 19.4983

Achromatopsia

142.0000, 0.0000, 0.0000

Achromatomaly

141.8500, -5.8420, 7.1476

CSS Examples

Text

The CSS property to change the color of the text to YUV 141.7670, -16.6471, 19.4983 is called "color". The color property can be set on classes, ids or directly on the HTML element.

This example shows how text in the color `rgb(164, 137, 108)` looks like.

```
.text, #text, p{  
    color:rgb(164, 137, 108)  
}
```

If you want to add a text shadow in that color use the text-shadow property, you can generate a text shadow directly with our [CSS Text Shadow Generator](#).

Here you see how black text with a 4 pixel rgb(164, 137, 108) colored shadow looks like.

```
.shadow{ text-shadow: 4px 4px 2px rgb(164, 137, 108) }
```

Border

The CSS property to change the border of an element to YUV 141.7670, -16.6471, 19.4983 is called "border".

The border property can be set on classes, ids or directly on the HTML element.

This example shows the color as border, it can be applied via the CSS property "border" or "border-color".

```
.border, #border, table{ border:4px solid rgb(164, 137, 108) }
```


If only the border color should be changed use the property `border-color`.

```
.border{ border-color:rgb(164, 137, 108) }
```

If you want to add a box shadow in that color use:

Here you see how a box with a 4 pixel `rgb(164, 137, 108)` colored shadow looks like.

```
.boxshadow{ -moz-box-shadow:4px 4px 4px  
4px rgb(164, 137, 108); -webkit-box-  
shadow:4px 4px 4px 4px rgb(164, 137, 108);  
box-shadow:4px 4px 4px 4px rgb(164, 137,  
108) }
```

Background

The CSS property to change the background color of an element to YUV 141.7670, -16.6471, 19.4983 is called "background". The background property can be set on classes, ids or directly on the HTML element.

```
.background, #background, body{  
background: rgb(164, 137, 108) }
```

If only the background color should be changed can be used:

```
.background{ background-color: rgb(164,  
137, 108) }
```

This example shows the color as background, it is applied via the CSS property "background".

To optimize and compress your CSS code, you can use our [online CSS compressor and optimizer](#) based on csstidy. If you want to create a linear or radial gradient as background or border, check our [CSS Gradient Generator](#).

Hey! You found this booklet interesting? Support Converting Colors with the new Membership Option!

The pro membership hides all ads, plus gives you double the colors in the color bucket, and more awesome pro features!

[Learn more, Memberships starting at \\$2.50/m!](#)

**Follow me
on Twitter!**

@ConvertingColor